

For Lease

Colony Park Offices on South Main St Downtown Alpharetta

284 South Main Street, Suite 400
Alpharetta, GA 30009

284 South Main St | Alpharetta



Property Highlights:

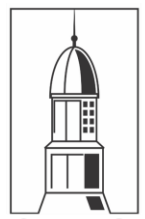
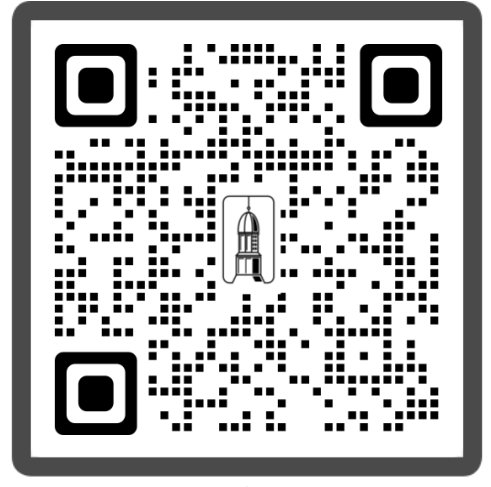
- Fully Renovated – First Generation Office Space
- Alpharetta Walking District – Start of the Alpha Loop
- Part of a 9 Acre 100+ Condominium Office Park
- Professional On-Site Property Management and Leasing
- 500+ On-Site Parking Spaces
- Less than 1 Mile from Avalon Development & GA 400

Take the Virtual Tours:

- [1,106 SF Suite](#)
- [1,600 SF Suite](#)
- [2,600 SF Suite](#)
- [3,200 SF Suite](#)

Colony Park Photo Gallery

- [Interior Photos](#)
- [Exterior Photos](#)



COLONY PARK
OFFICE CONDOMINIUMS

284 South Main St, Suite 400 • Alpharetta, GA 30009

For Lease



284 South Main St | Alpharetta



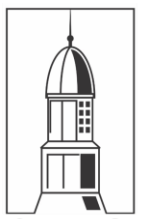
COLONY PARK
OFFICE CONDOMINIUMS

284 South Main St, Suite 400 • Alpharetta, GA 30009

For Lease



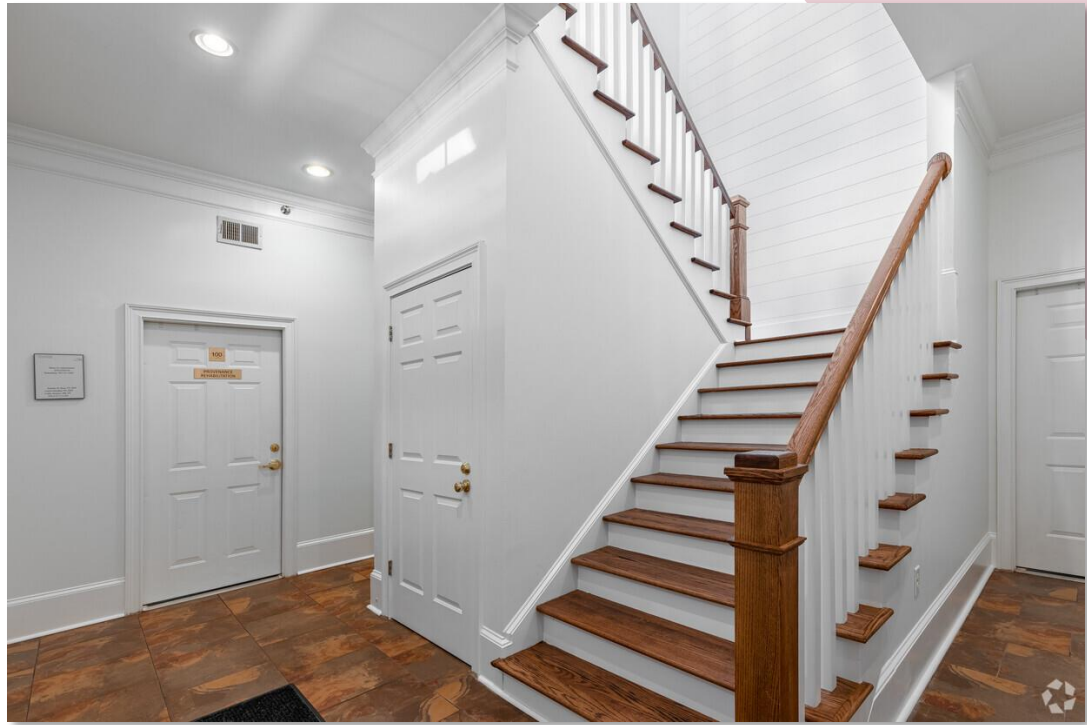
284 South Main St | Alpharetta



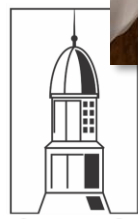
COLONY PARK
OFFICE CONDOMINIUMS

284 South Main St, Suite 400 • Alpharetta, GA 30009

For Lease



284 South Main St | Alpharetta



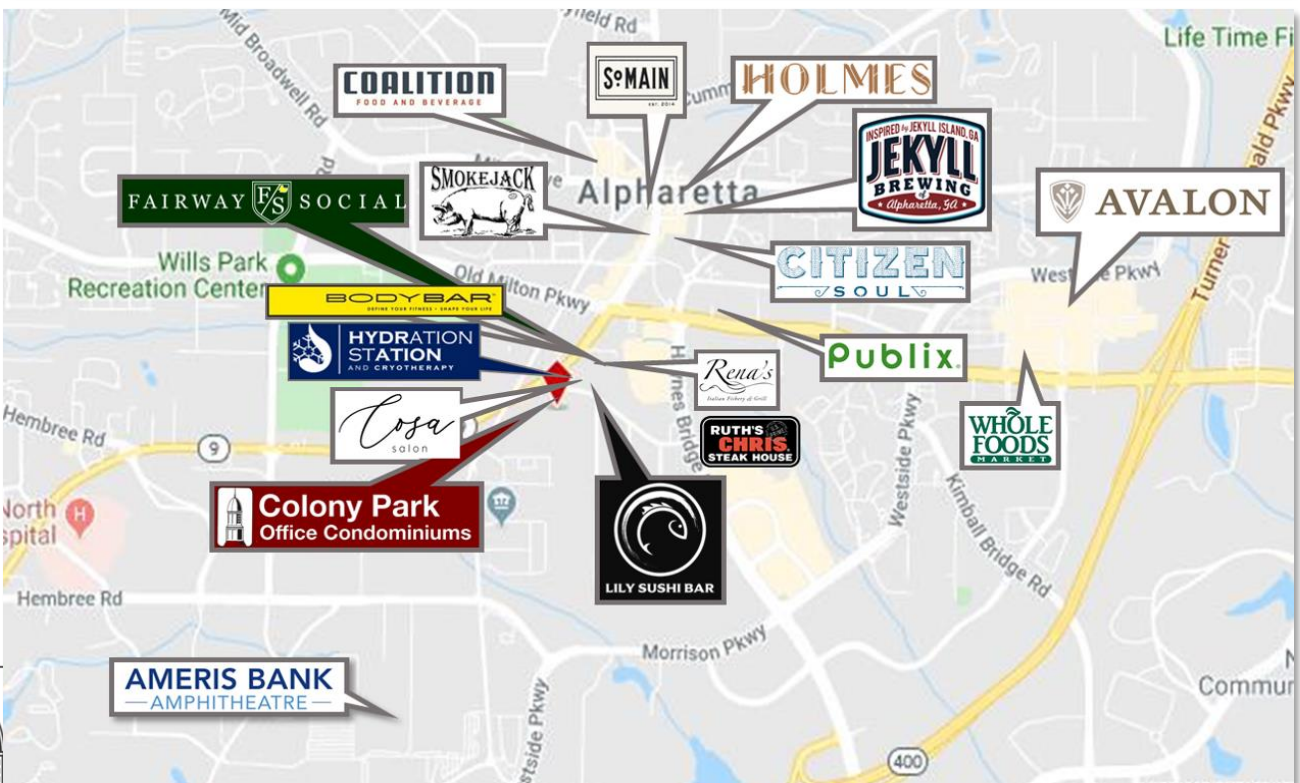
COLONY PARK
OFFICE CONDOMINIUMS

284 South Main St, Suite 400 • Alpharetta, GA 30009

For Lease



284 South Main St | Alpharetta



COLONY PARK
OFFICE CONDOMINIUMS

284 South Main St, Suite 400 • Alpharetta, GA 30009