

8 King Street East

PREMIER BOUTIQUE BUILDING
IN THE FINANCIAL CORE

INTRODUCING
**THE NEW WAVE
OF RSG SUITES**

**\$4.00 / SF / YEAR
BROKER FEE**

First 5 years only

(\$2.00/PSF/Annum for years 6-10)

Deals must be minimum 5 years.

Deals must be firm and binding in 2026.

New tenants only.





Availabilities

Suite 100	2,363 SF	LEASED
Suite 208	2,622 SF	
Suite 500	2,443 SF	
Suite 705	603 SF	
Suite 810	1,761 SF	LEASED
Suite 1100	4,931 SF	
Suite 1110	811 SF	
Suite 1305	2,596 SF	
Suite 1400	7,648 SF	
Suite 1500	2,205 SF	LEASED
Suite 1507	1,611 SF	LEASED
Suite 1600	7,667 SF	
Suite 1802	3,302 SF	



KIRK BAYLIS*
Senior Sales Associate
647 923 9243
kirk.baylis@cbre.com

ELAINE JENKINS*
Vice President
647 550 2375
elaine.jenkins@cbre.com

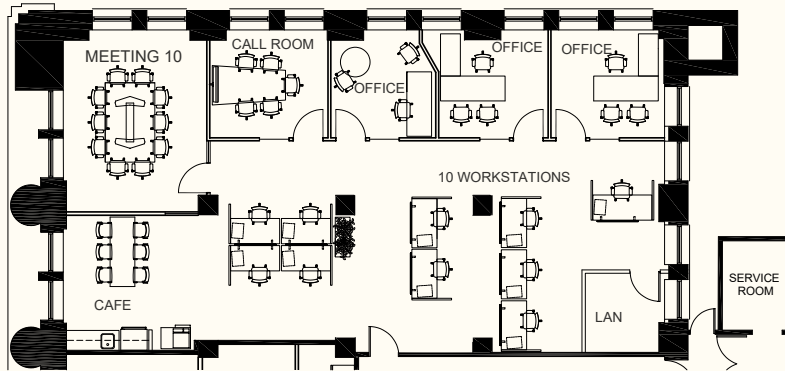
JEFF FRIEDMAN*
Vice Chairman
416 815 2363
jeff.friedman@cbre.com
*Sales Representative

CBRE LIMITED, REAL ESTATE BROKERAGE

145 King Street West, Suite 1100, Toronto, Ontario Canada, M5H 1J8, +1 416 362 2244, www.cbre.ca

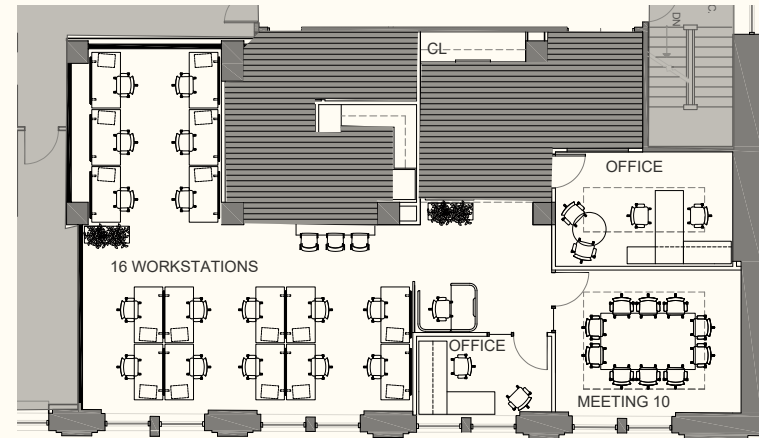
Suite 208

2,622 SF | NOW **READY SET GO**



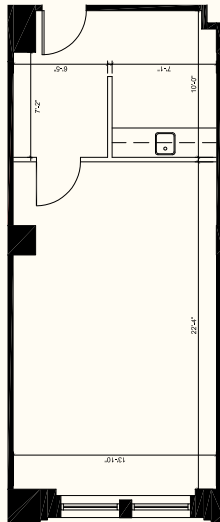
Suite 500

2,443 SF | NOW **READY SET GO**



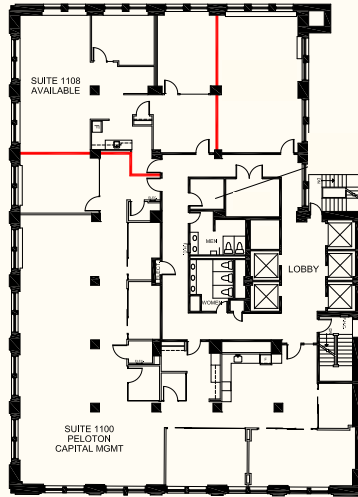
Suite 705

603 SF | NOW **READY SET GO**



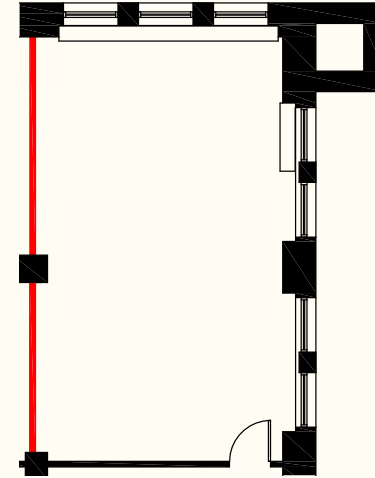
Suite 1100

4,931 SF | Q4 2026  **READY SET GO**



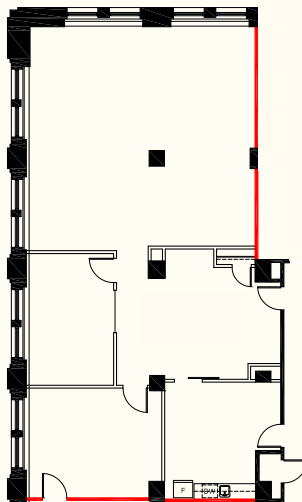
Suite 1110

811 SF | Q4 2026  **READY SET GO**



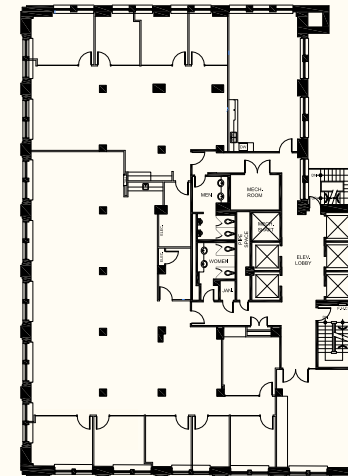
Suite 1305

2,596 SF | NOW  **READY SET GO**



Suite 1400

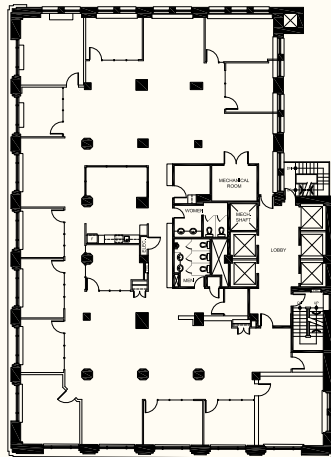
7,648 SF | NOW
Future RSG Suite



Suite 1600

7,667 SF | NOW **READY SET GO**

Conceptual Layout | Future RSG Suite



Suite 1802

3,302 SF | JULY 1, 2026 **READY SET GO**

