



### DEMOGRAPHIC HIGHLIGHTS

	1 Mile	3 Mile	5 Mile
Population	12,077	105,121	307,011
Number of Households	4,365	38,479	108,814
Average Income	\$150,531	\$123,243	\$115,888

### PROPERTY SIZE

117,305 SQF

### LAT/LONG

30.01292 | -95.53705

### TRAFFIC COUNTS

Louetta: 37,000 | Champion Forest Dr: 15,000

### Bryson King

Leasing Agent  
(832) 677-6847  
bking@gfinvestments.com

### Audrey Curran

Property Manager  
(281) 840-5363  
acurran@gfinvestments.com

### MAJOR TENANTS



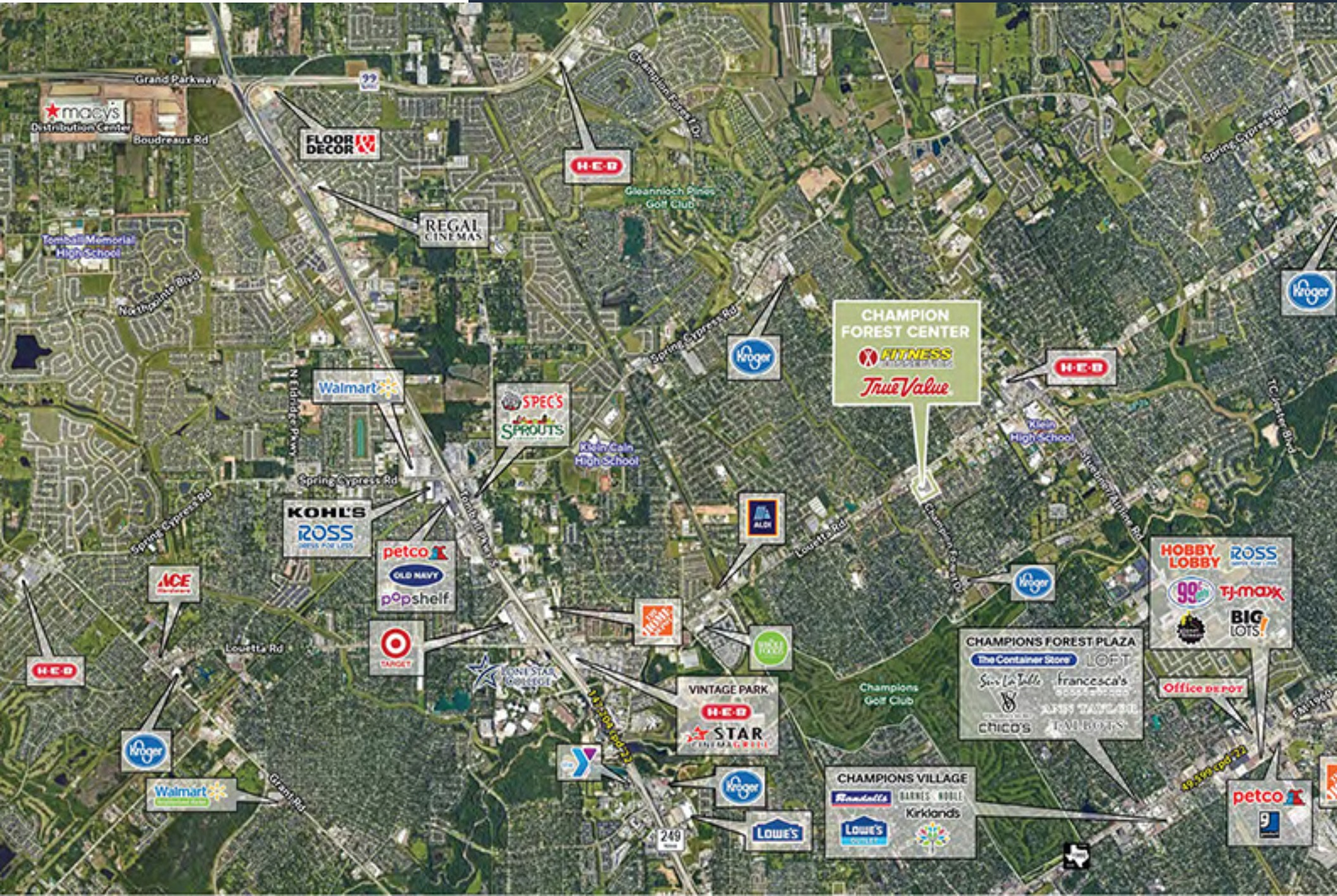


Unit	Tenant	SQF	Unit	Tenant	SQF
16616	Fitness Connection	54.350	16740	Painting with a Twist	2.575
16640	Vacant	2.107	16741	Anel Eyelash	1.077
16634	Astros Liqur	2.107	16744	Marcos Pizza	1.700
16638	Vacant	1.875			
16630	Vacant	1.680			
16642	Vacant	3.750			
16646	Farm. The	1.625			
16650	Zaney Cuban Dance Stud	2.655			
16668	From The Ashes Theatre C	4.380			
16674	Champions Cafe	800			
16676	Global Storage	1.000			
16678	State Farm Insurance	1.620			
16680	Champions Hair Salon	1.200			
16682	Vacant	900			
16686	Laurel School of Massae	2.700			
16694	Vacant	3.094			
16712	King Cloud	976			
16714	Vacant	2.000			
16716	Vacant	1.947			
16718	Sport Clips	1.440			
16720	Champion True Value Hom	10.355			
16730	Liv MedSpa	3.580			
16734	Oriental Garden	3.540			
16736	Dr. Nguyen Family Practice	2.272			



Scan with your smart phone to go to our homepage

This site plan is presented solely for the purpose of identifying the approximate location and size of the building, and intended for use as a reference only.



**CONTACT**

**Bryson King**

Leasing Agent

(832) 677-6847

[bking@gfinvestments.com](mailto:bking@gfinvestments.com)

**Audrey Curran**

Property Manager

(281) 840-5363

[acurran@gfinvestments.com](mailto:acurran@gfinvestments.com)



Scan with your smart phone  
to go to our homepage