



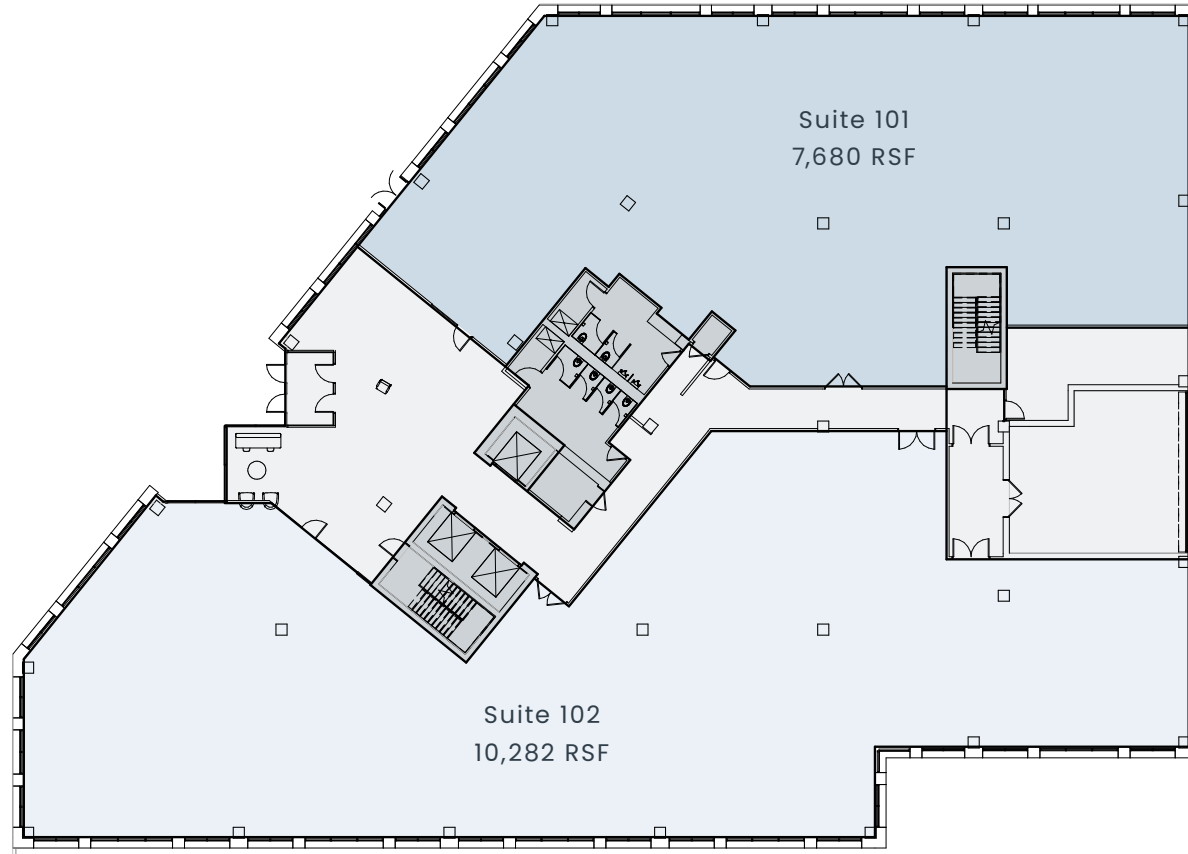
UNISON

ELLIOTT BAY

Building 351 • Floor 1 • 17,962 RSF

Demising Plan

351 • 401 • 501 ELLIOTT AVENUE WEST | SEATTLE, WASHINGTON



Note: Drawing not to scale



Joe Gowan

+1 206 607 1738 | joe.gowan@jll.com

Tim Jones

+1 206 971 7011 | tim.jones@jll.com

© 2023 Jones Lang LaSalle IP, Inc. All rights reserved. All information contained herein is from sources deemed reliable; however, no representation or warranty is made to the accuracy thereof. Jones Lang LaSalle Brokerage, Inc.

UnisonElliottBay.com

