

Timberline Knolls

40 Timberline Dr. Lemont | IL 60439

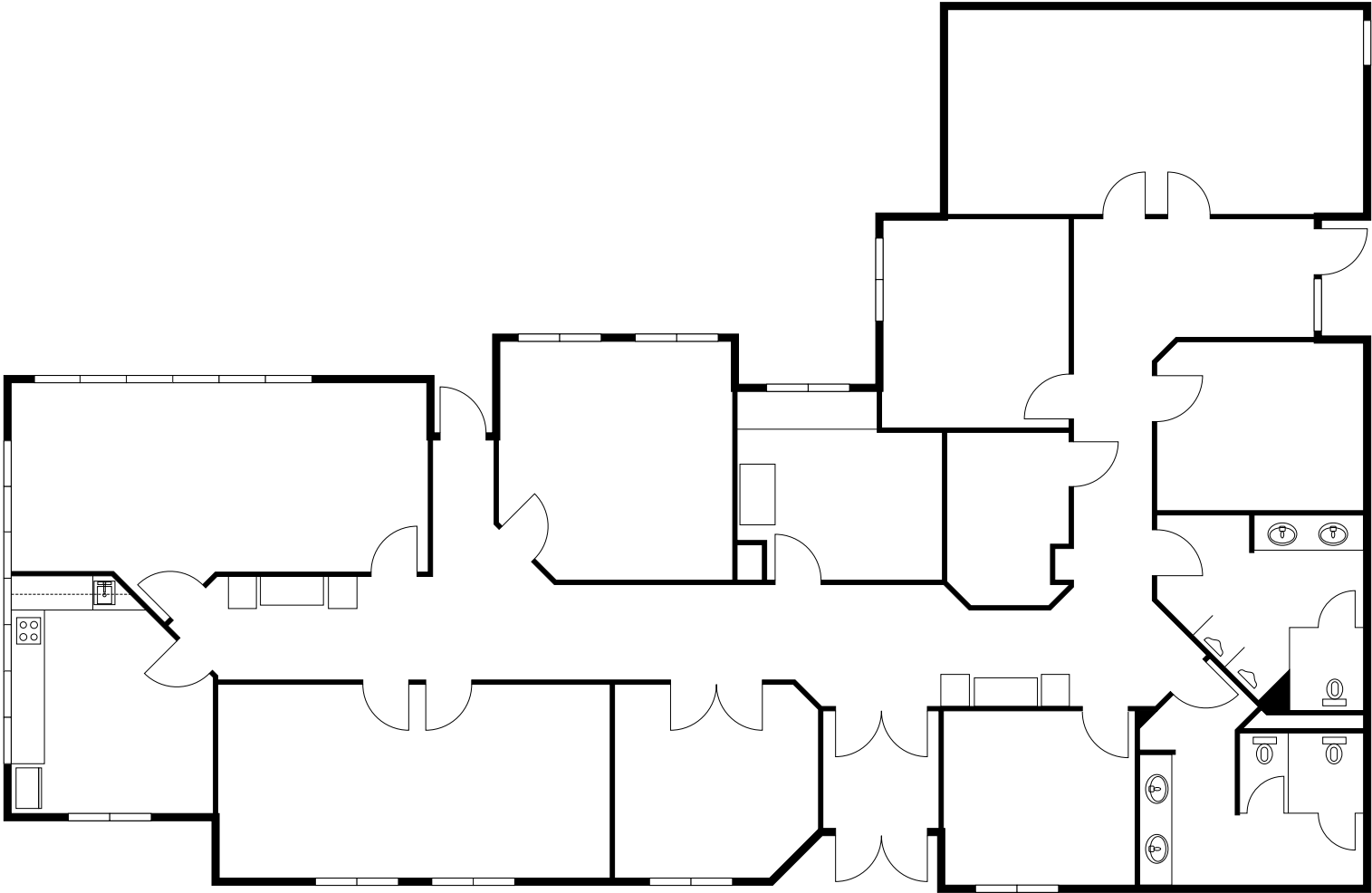
A SANCTUARY FOR
RENEWAL AND RECOVERY
FLOOR PLANS



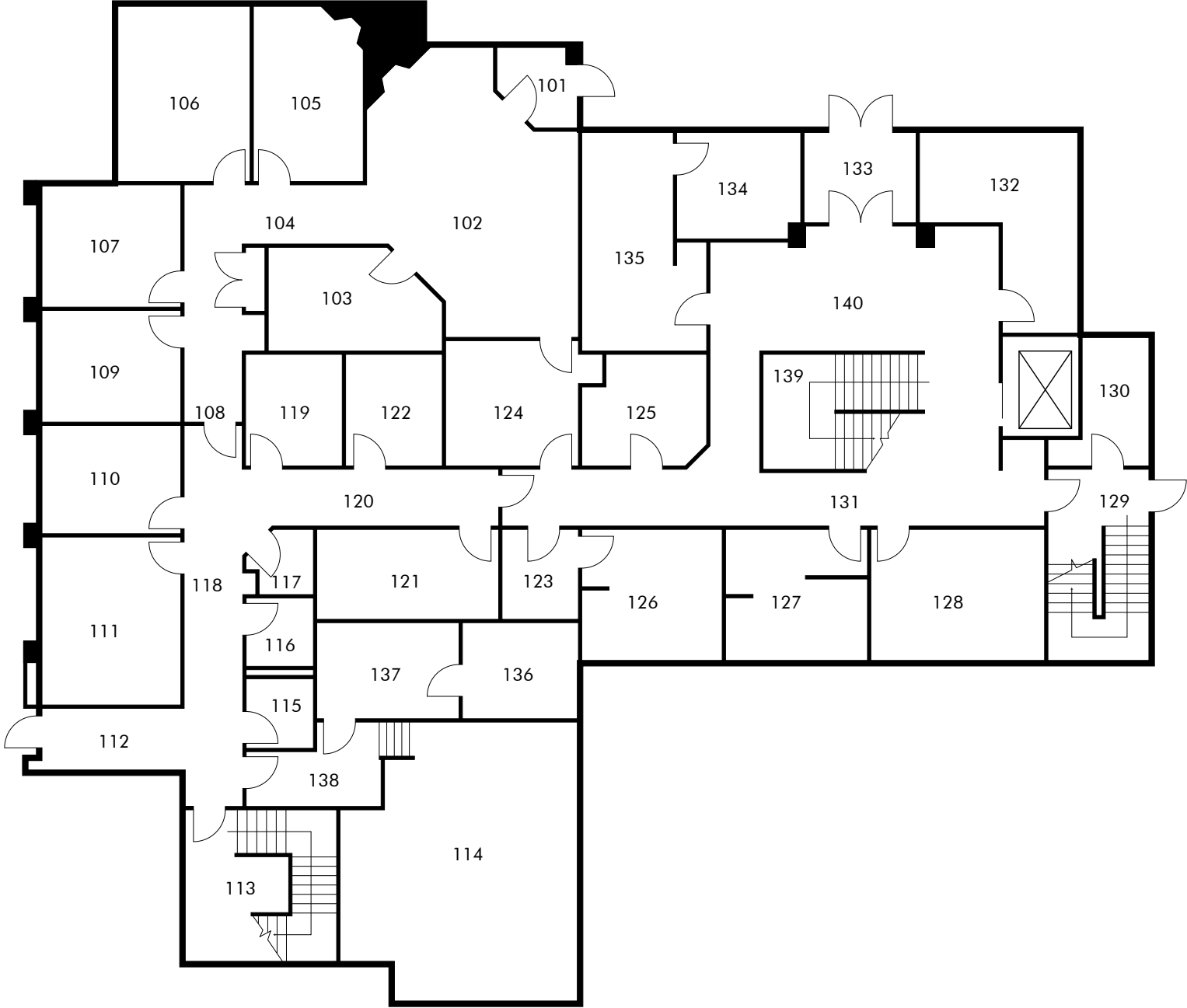
CBRE

NATIONAL BEHAVIORAL
HEALTH ADVISORY GROUP

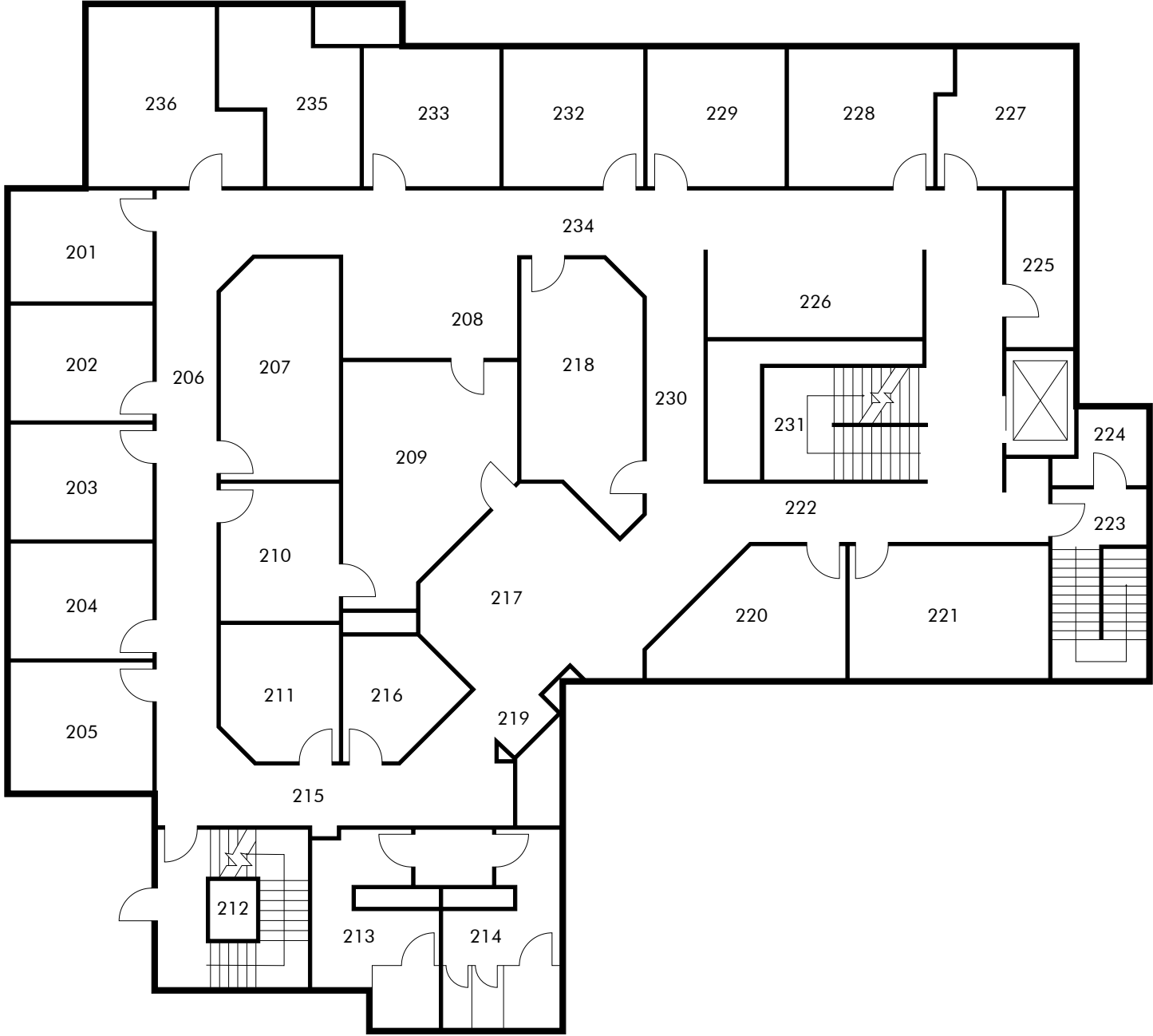
ACORN CAM LOCATIONS



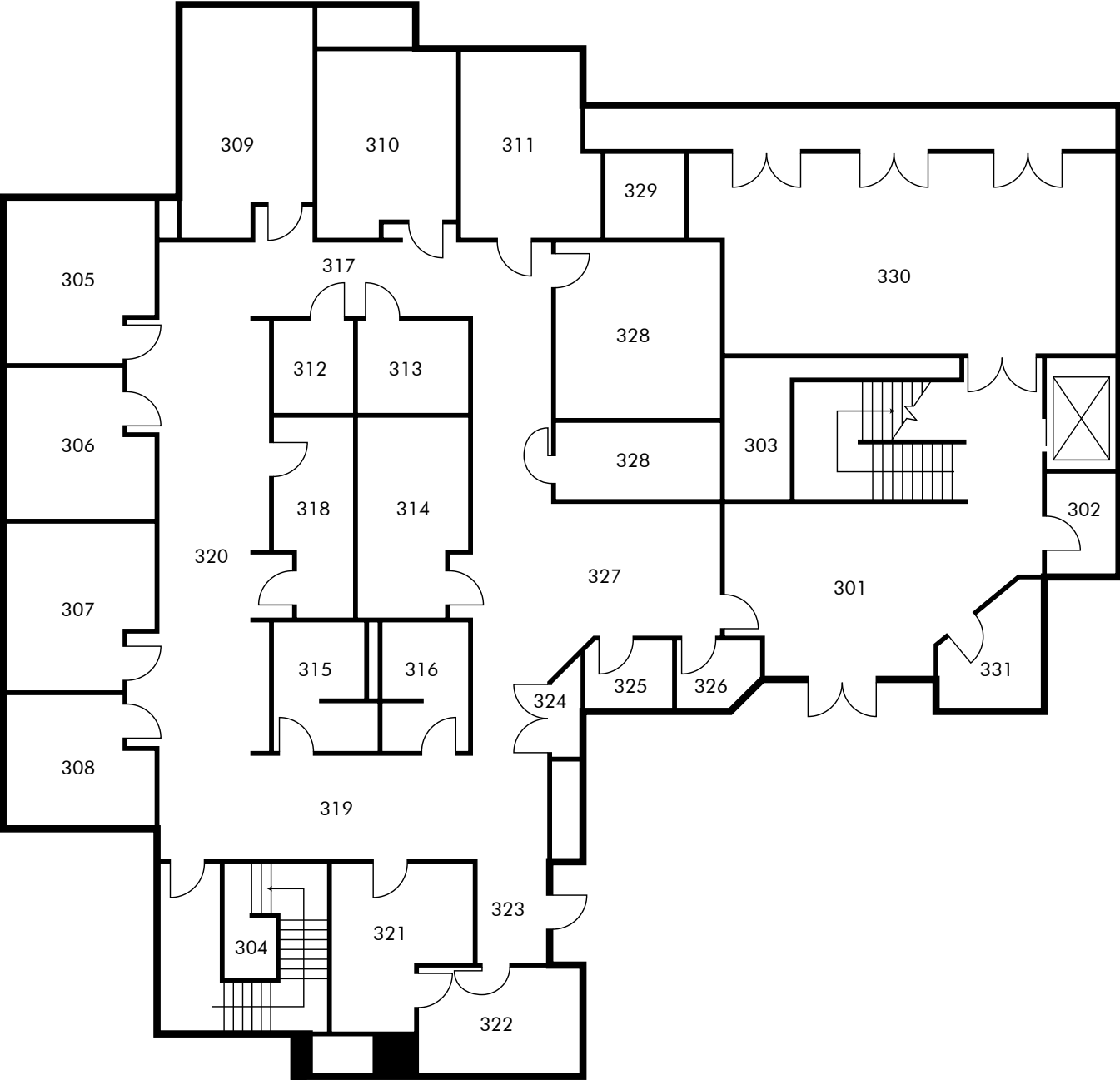
BP-ADMIN FIRST FLOOR



BP-ADMIN SECOND FLOOR



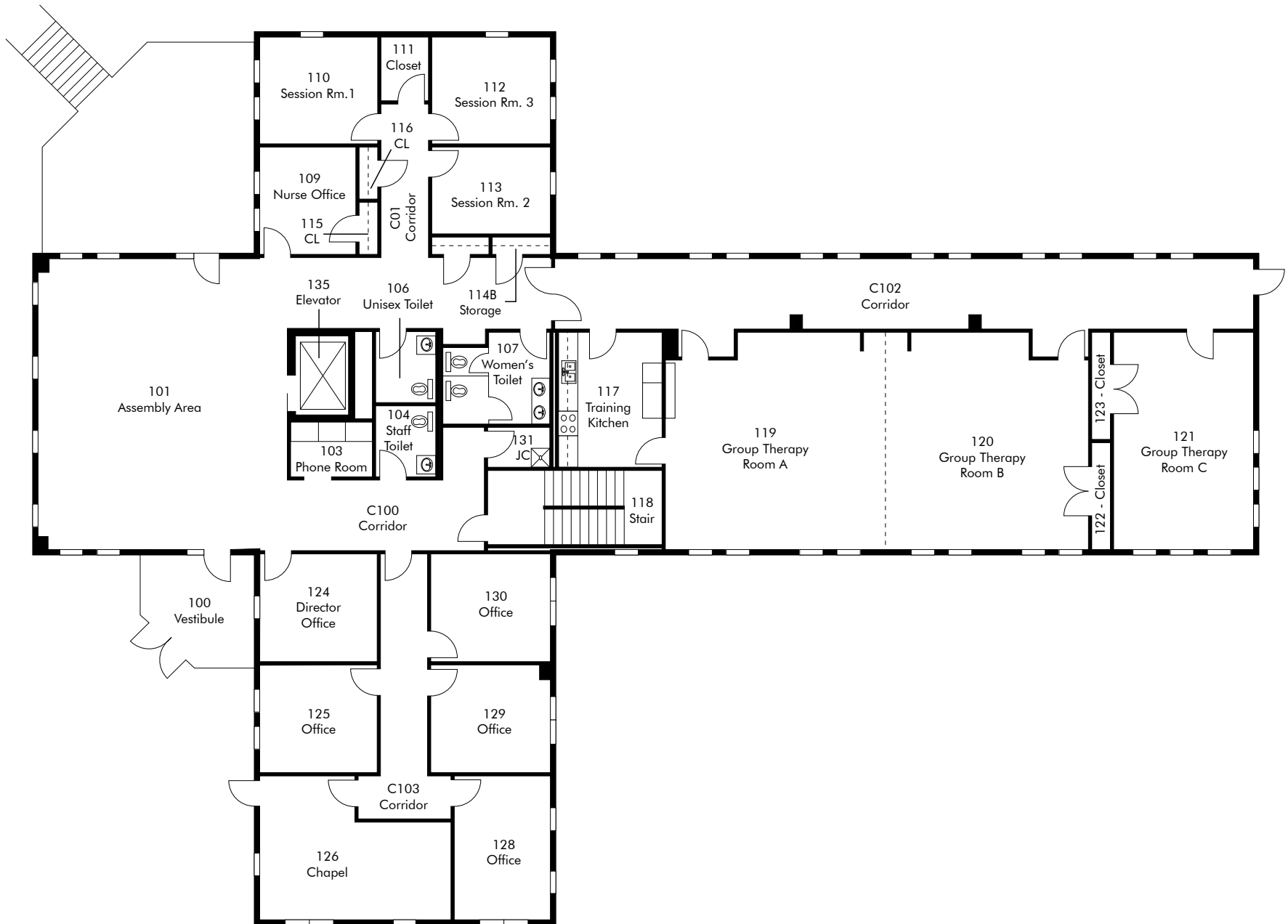
BP-ADMIN THIRD FLOOR



BP-CHESTNUT FLOOR PLANS BASEMENT



BP-CHESTNUT FLOOR PLANS LEVEL 1



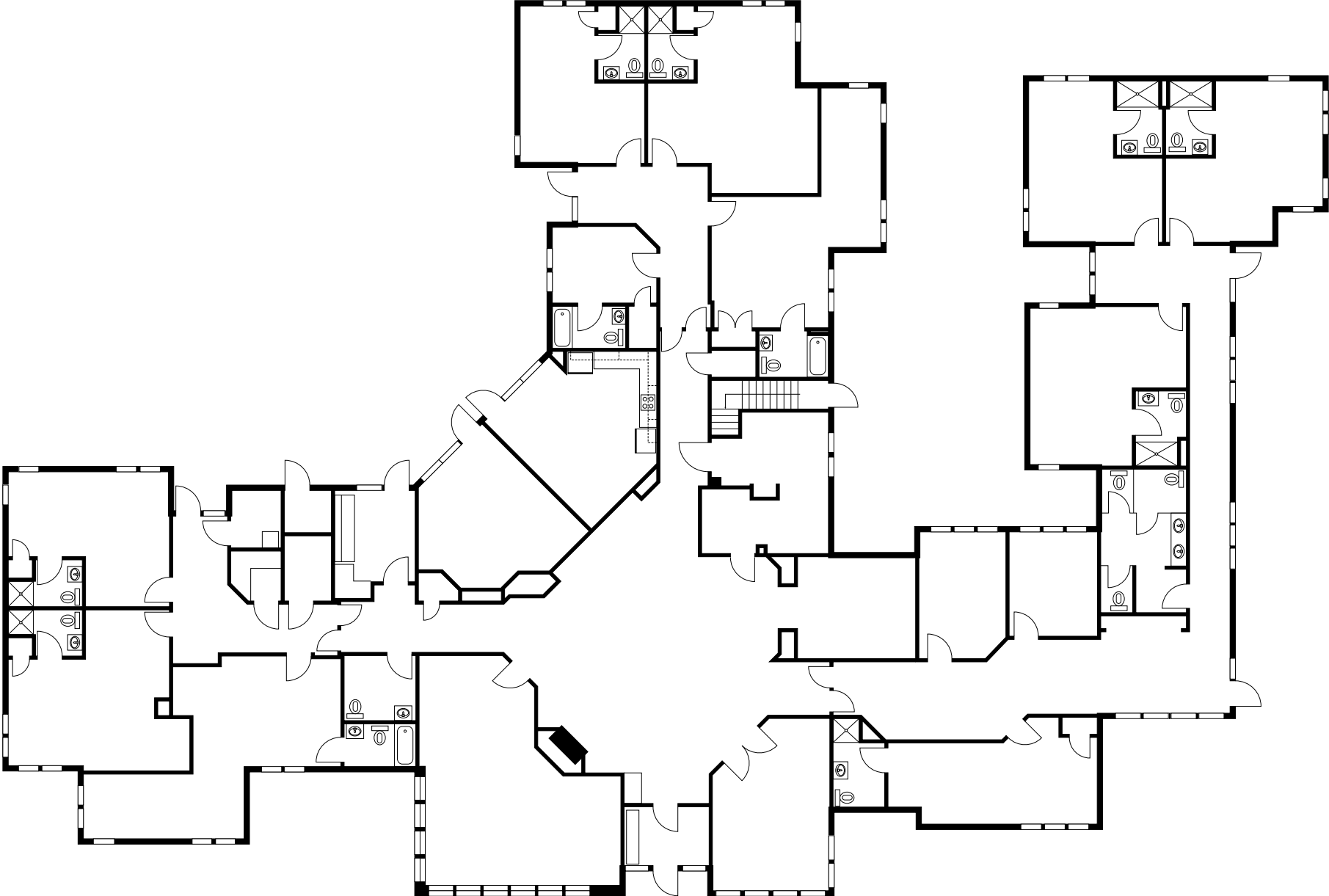
BP-DINING HALL FLOOR LAYOUT 1



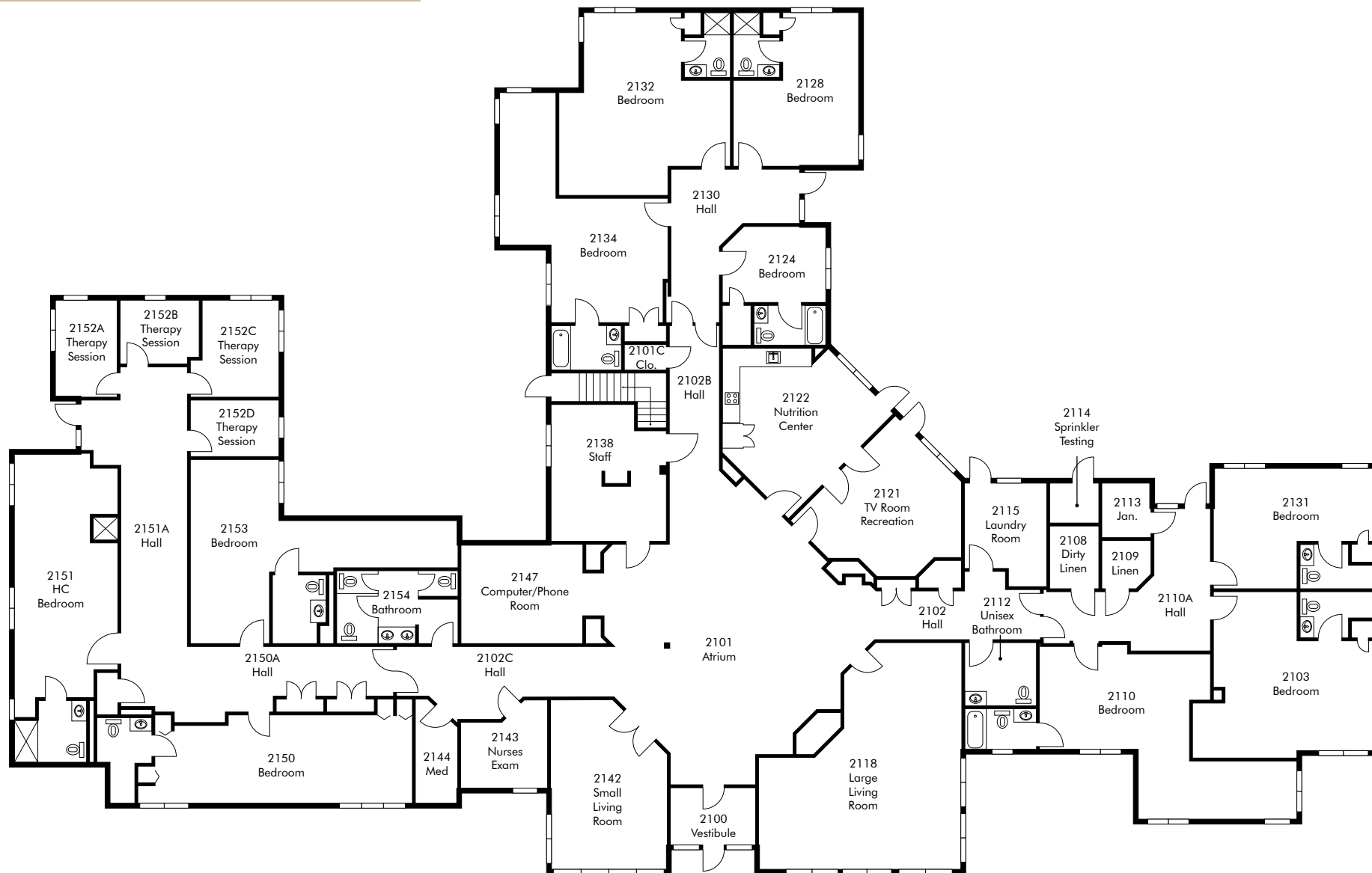
BP-DINING HALL FLOOR LAYOUT 1

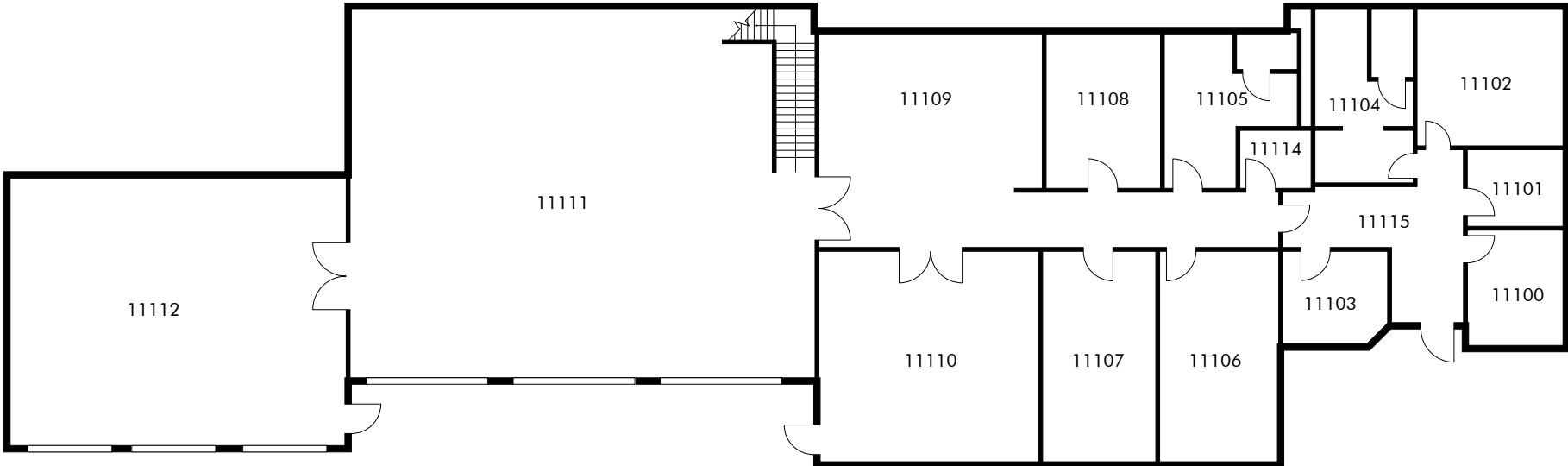


BP-OAK FLOOR PLAN

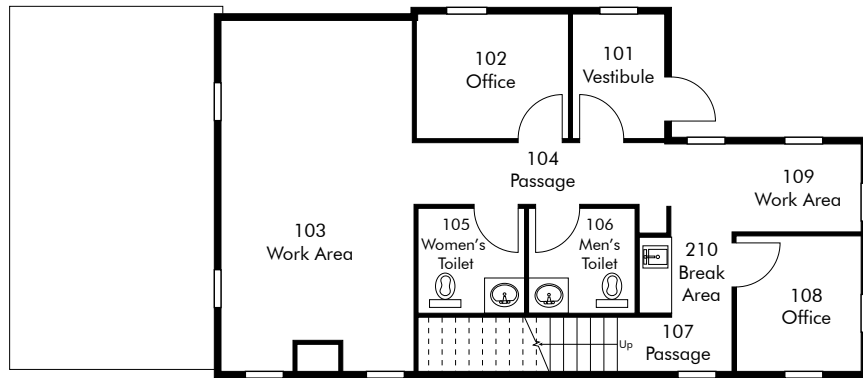


BP-PINE FLOOR PLAN

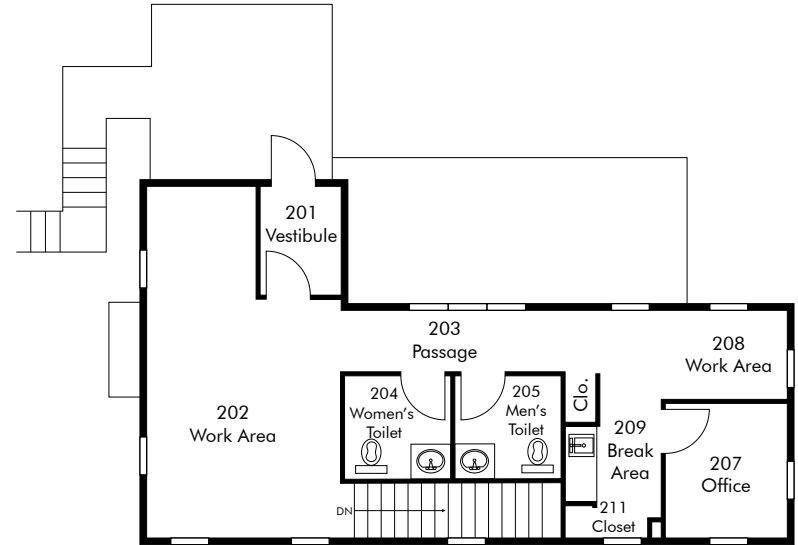




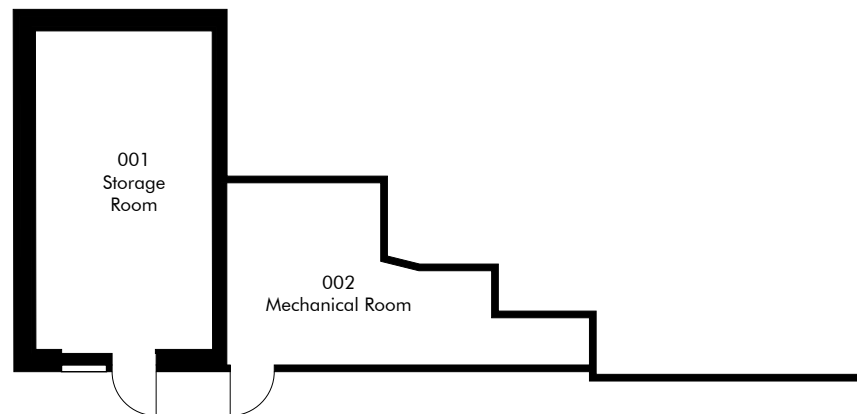
BP-QUARRY FLOOR PLAN



First Floor Power and Signal plan

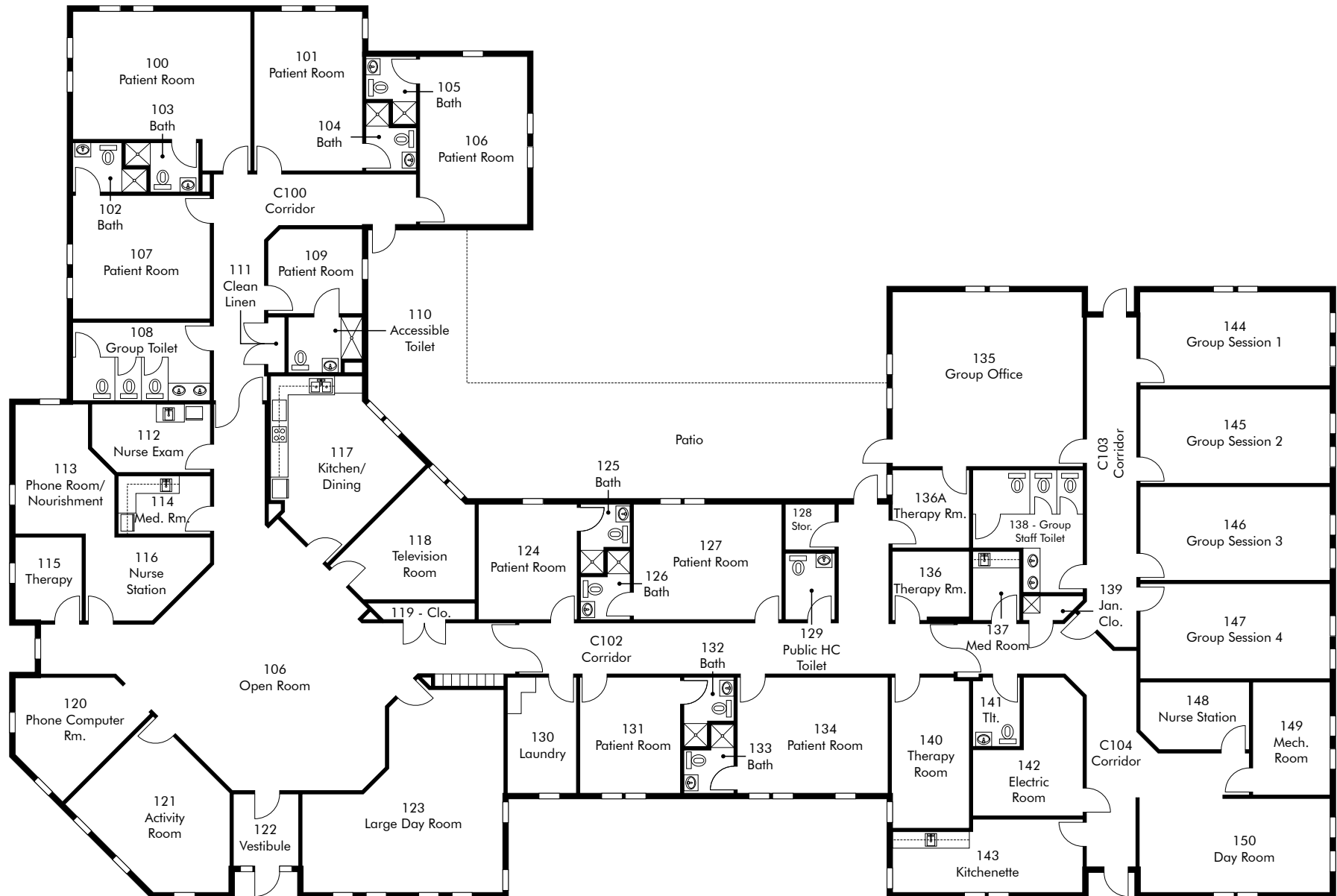


Second Floor Power and Signal Plan

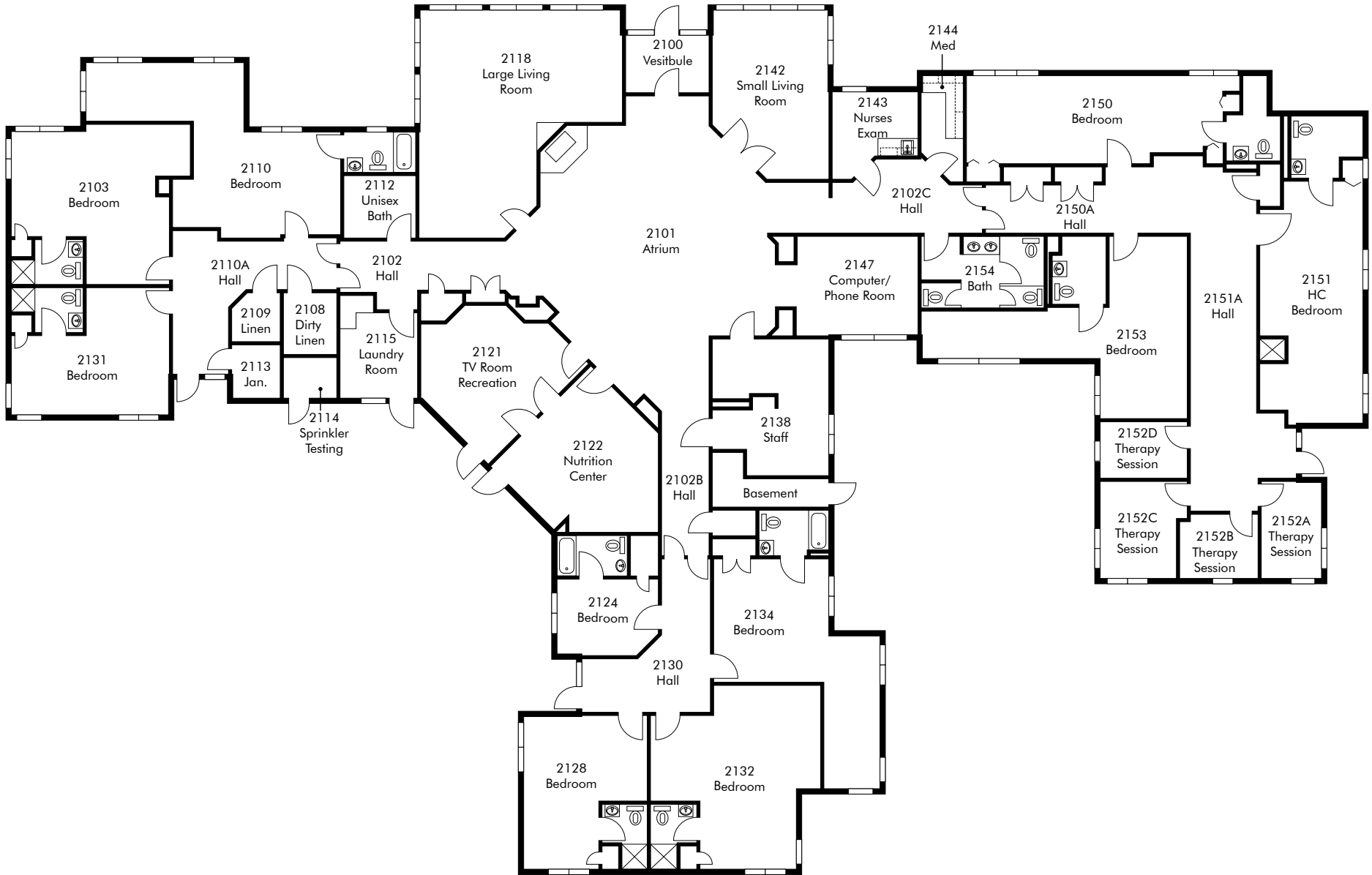


Lower Level Power and Signal Plan

BP-SEQUOIA FLOOR PLAN



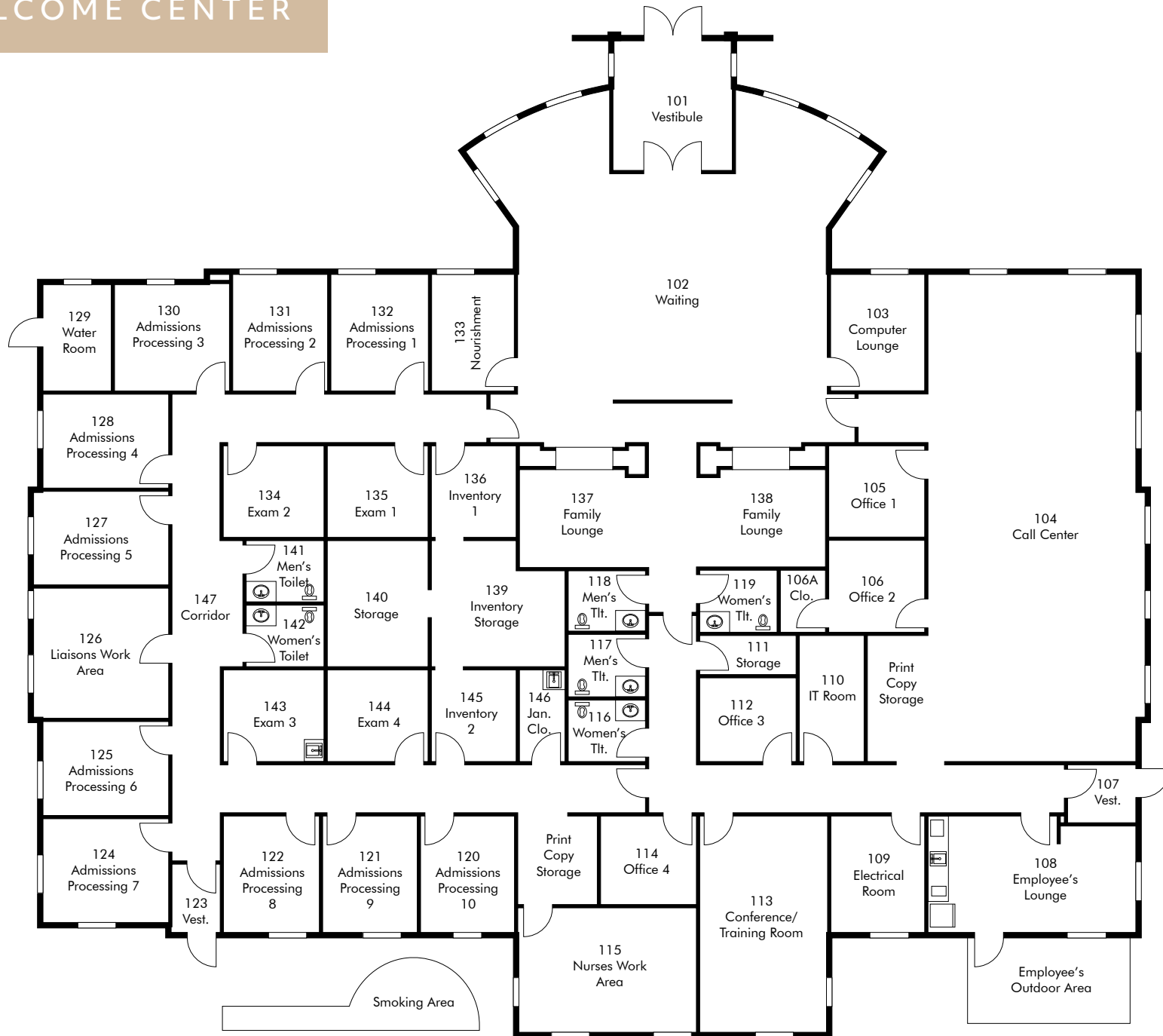
BP-WILLOW FLOOR PLAN



SYCAMORE FLOOR PLAN



TK WELCOME CENTER





Timberline Knolls

40 Timberline Dr. Lemont | IL 60439



INVESTMENT CONTACTS

Ken Brown

Senior Vice President
+1 720 527 6507
ken.brown@cbre.com

Stuart Thomas

Executive Vice President
+1 970 818 6660
stuart.thomas@cbre.com

Chessa Pike

Senior Associate
+1 917 280 6612
chessa.pike@cbre.com

Alan Kirby

Vice President
+1 615 945 7771
alan.kirby@cbre.com

Noble Judy

Vice President
+1 615 419 9282
noble.judy@cbre.com

Andrew Kaplan

Executive Vice President
+1 773 485 0403
andrew.kaplan@cbre.com

Simon Hince

Associate
+1 209 252 6891
simon.hince@cbre.com

© 2025 CBRE, Inc. All rights reserved. This information has been obtained from sources believed reliable but has not been verified for accuracy or completeness. You should conduct a careful, independent investigation of the property and verify all information. Any reliance on this information is solely at your own risk. CBRE and the CBRE logo are service marks of CBRE, Inc. All other marks displayed on this document are the property of their respective owners, and the use of such logos does not imply any affiliation with or endorsement of CBRE. Photos herein are the property of their respective owners. Use of these images without the express written consent of the owner is prohibited. CPM Timberline Knolls_BRO2_Brown_v01_BB 10/03/25

