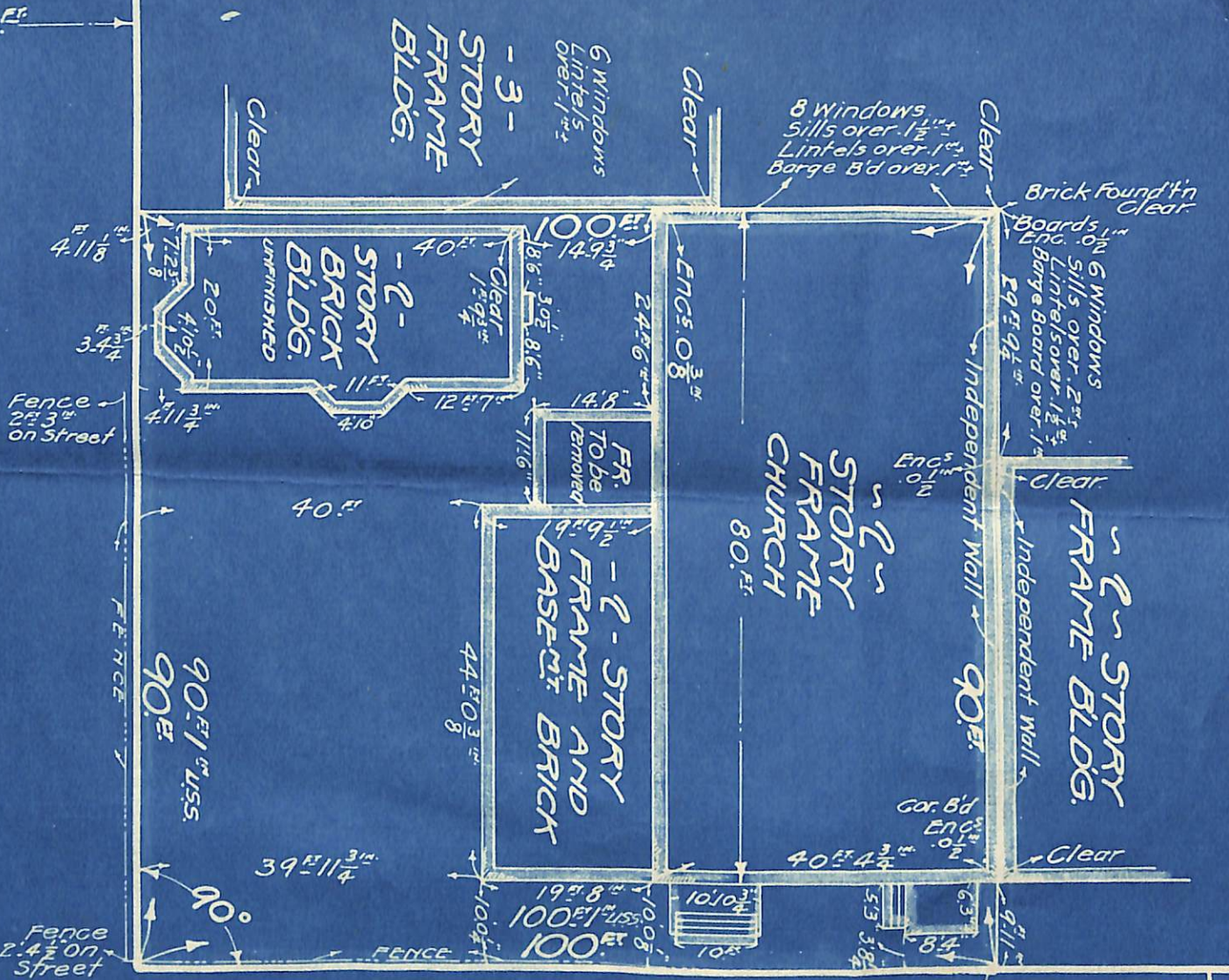


60 FT.

HIMMROD

ST.

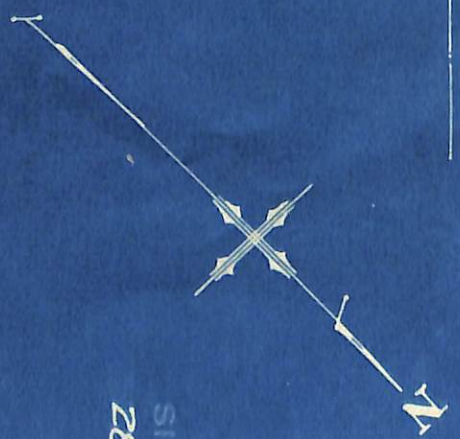


ST. NICHOLAS

AYE

70 FT.

Holy Cross



MAP OF PROPERTY,  
SITUATED AT RIDGEWOOD,  
28TH WARD, BOROUGH OF BROOKLYN,  
CITY OF NEW YORK.

THIS SURVEY IS MADE FOR  
THE DIOCESAN MISSIONS OF THE  
DIOCESE OF LONG ISLAND.

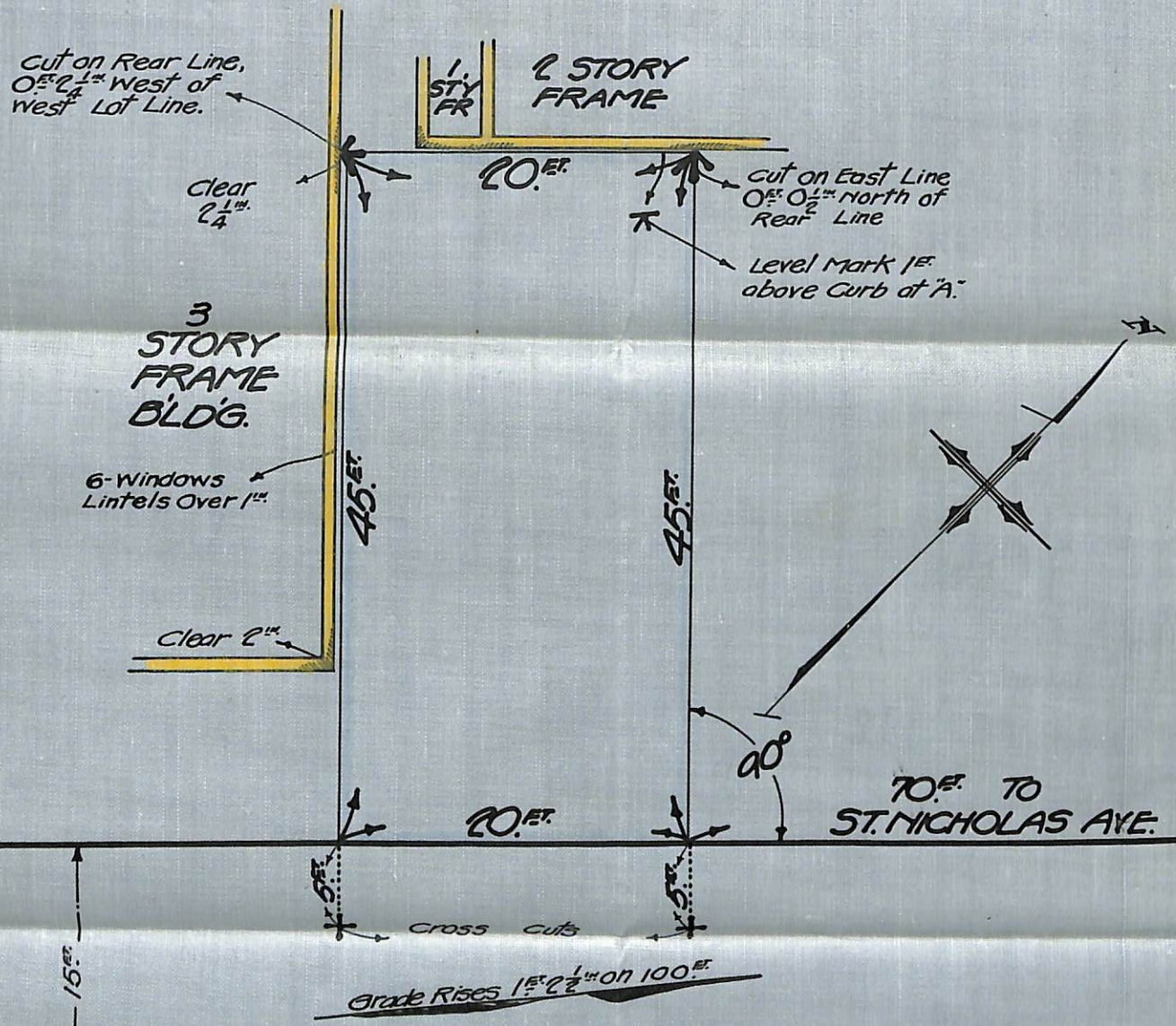
THIS SURVEY IS GUARANTEED TO  
TITTLE GUARANTEE AND TRUST CO.

MARCH-16TH 1922

Matthew Campbell

CIVIL ENGINEER & CITY SURVEYOR  
2416 EUTAW AVE.  
RIDGEWOOD,  
SECOND WARD, BOROUGH OF QUEENS  
CITY OF NEW YORK

NOTES:  
All dimensions shown hereon are in English Standard Measure except where noted U.S.S. which denotes United States Standard Measure.



60<sup>FT.</sup>

15<sup>FT.</sup>

HIMROD

ST.

MAP OF PROPERTY,  
 SITUATED AT ~ RIDGEWOOD,  
 28<sup>TH</sup> WARD, BOROUGH OF BROOKLYN,  
 • CITY OF NEW YORK •

THIS SURVEY IS MADE FOR AND GUARANTEED TO  
 • DIOCESEAN MISSIONS OF THE  
 • DIOCESE OF LONG ISLAND •

• NOVEMBER 3<sup>RD</sup> 1921 •

*Nathan Campbell*  
 CIVIL ENGINEER AND CITY SURVEYOR  
 • 2416 PUTNAM AVE., •  
 • RIDGEWOOD •  
 SECOND WARD, BOROUGH OF QUEENS  
 • CITY OF NEW YORK •