



MULTI TENANT - OFFICE BUILDING FOR SALE

5701 Kentucky Ave N,  
Crystal, MN 55428

pybe.com | 7401 Bush Lake Road, Edina, MN 55439 | 612.444.3333



## PROPERTY HIGHLIGHTS

- Consistent income stream supported by varied lease expiration dates
- Tenants show strong commitment to the building, with multiple suites likely to renew
- Mix of professional services, office users, and creative businesses enhances stability
- Excellent regional connectivity with fast routes to Minneapolis and major highways
- Adjacent to Crystal Shopping Center, offering convenient access to shops, restaurants, and daily needs
- Well-served by nearby bus lines providing easy travel across the metro
- Located in a competitive Northwest office/flex market where available space is limited
- Solid masonry structure and recent improvements help keep operating costs low
- Benefitting from established residential areas and a dependable local labor pool

## PROPERTY DESCRIPTION

5701 Kentucky Ave N is a well-maintained, fully leased 17,985 SF office building in Crystal, Minnesota. The property includes 21 units and is fully occupied by 14 tenants, offering stable, reliable income.

Built in 1981 and updated in 2020, it features modern interior, ample parking, and flexible layouts suited for a variety of office and service users. Its location near Highway 169, Highway 100, and Bass Lake Road provides quick access to Downtown Minneapolis and nearby business areas.

Strong occupancy, established, reliable tenants, and below-market rents create a solid investment opportunity with room for future growth.

## RUSTAM MUHARAMOV

MN #40413417  
952.444.3333  
info@pybe.com  
pybe.com | 7401 Bush Lake Road, Edina, MN 55439 | 612.444.3333





## RUSTAM MUHARAMOV

VP of Investor Relations

info@pybe.com

Direct: **952.444.3333** | Cell: **612.444.3333**

MN #40413417

### PROFESSIONAL BACKGROUND

Rustam Muharamov began his real estate career in 2013 at the age of 17. In his first five years, he focused on sourcing investment opportunities, working as a licensed realtor representing investors, managing residential flips, and buying and selling rental properties.

Starting 2018, Rustam has been active in the commercial real estate space. His first commercial deal yielded a \$450,000 profit within just six months—from acquisition to sale. Today, he oversees multiple commercial real estate projects ranging in value from \$2 million to \$15 million, with a hands-on approach to acquisitions, asset management, and strategic growth.

Rustam has successfully completed around 50 commercial real estate transactions, participating from all sides of the equation—as a buyer, seller, tenant representative, investor, end-user, and more. He has executed all elements of commercial real estate operations, including managing \$2 million construction projects, leasing, property management, listings, sales, buyer representation, sourcing off-market deals, and working directly with motivated sellers.

### RECENT TRANSACTIONS



13000 Athens Ave  
Lakewood OH 44107  
Purchase Price: \$13,250,000  
Property Type: Industrial  
Building Sqft: 560,000 sqft  
Land Acre: 17.00 acres



15401 Chatfield Street  
Cleveland OH 44072  
Purchase Price: \$4,400,000  
Property Type: Industrial  
Building Sqft: 153,000 sqft  
Land Acre: 11.00 acres



14500 Martin Drive  
Eden Prairie MN 55344  
Purchase Price: \$1,600,000  
Property Type: Industrial - Flex  
Building Sqft: 18,500 sqft  
Land Acre: 2.44 acres



5288 Stage Coach Trail  
Stillwater MN 55082  
Purchase Price: \$3,500,000  
Property Type: Industrial - IOS  
Building Sqft: 19,000 sqft  
Land Acre: 9.00 acres

### RUSTAM MUHARAMOV

MN #40413417

952.444.3333

info@pybe.com

pybe.com | 7401 Bush Lake Road, Edina, MN 55439 | 612.444.3333





Gavkhar  
Mamedalieva  
Real Estate Broker  
License #: MN 40924698



AR Realty Group



612-806-8376



Gavkhar@arrgm.com



Minneapolis, Minnesota, USA

*With six years of experience in commercial real estate and a strong background in banking and finance, Gavkhar delivers informed market insight and sophisticated financing expertise to every transaction. She is committed to providing clients with clear, strategic guidance and a high level of service.*

*Beyond her professional work, she enjoys spending time outdoors with her daughter and capturing nature through photography.*

**RUSTAM MUHARAMOV**

MN #40413417

952.444.3333

info@pybe.com

pybe.com | 7401 Bush Lake Road, Edina, MN 55439 | 612.444.3333



Sale Price	\$2,000,000
------------	-------------

PROPERTY INFORMATION	
Property Type	Office
Property Subtype	Multi Tenant Office
Zoning	C- Commercial
Lot Size	1.49 Acres
APN #	05-118-21-42-0066
Building Class	C

BUILDING INFORMATION	
Building Size	17,895 SF
NOI	\$191,174.10
Price per SF	\$112
Cap Rate	9.56
Occupancy %	100.0%
Tenancy	Multiple
Ceiling Height	12 ft
Minimum Ceiling Height	12 ft
Number of Floors	1
Year Built	1981
Year Last Renovated	2020
Construction Status	Existing
Construction Type	Concrete Block
Condition	Good
Roof	Older
Number of Buildings	1



**RUSTAM MUHARAMOV**

MN #40413417  
 952.444.3333  
 info@pybe.com  
 pybe.com | 7401 Bush Lake Road, Edina, MN 55439 | 612.444.3333



SUITE	TENANT NAME	SIZE SF	% OF BUILDING
160	MaryAnn Koeta Srisourath	379 SF	2.12%
205B	Pro Headssets LLC_1	407 SF	2.27%
123	Ahmedamine Ait Daoud	174 SF	0.97%
108 & 110	Enorris Production	1,663 SF	9.29%
119	Pfomin Apps LLC	669 SF	3.74%
121	Michael Culhane / Farmers I	580 SF	3.24%
201	Porfirio Castillo Herrera	467 SF	2.61%
104 & 106 & 152	Collective Dimensions, LLC	2,532 SF	14.15%
235	Lifetime Builders LLC_1	451 SF	2.52%
204	Kerly Gabrie Sibri Bustamante	570 SF	3.19%
207	Carlos Alfredo Alvarez Sol	440 SF	2.46%
155	Bentran LLC	1,042 SF	5.82%
100	Lets Talk Healing_2	1,817 SF	10.15%
198 & 209	Lets Talk Healing	2,627 SF	14.68%
199	Lets Talk Healing _3	1,148 SF	6.42%
200	Lets Talk Healing_1	1,749 SF	9.77%
205 A	Lets Talk Healing	1,180 SF	6.59%
<b>TOTALS</b>		<b>17,895 SF</b>	<b>99.99%</b>
<b>AVERAGES</b>		<b>1,053 SF</b>	<b>5.88%</b>

**RUSTAM MUHARAMOV**

MN #40413417  
 952.444.3333  
 info@pybe.com  
 pybe.com | 7401 Bush Lake Road, Edina, MN 55439 | 612.444.3333



## INCOME SUMMARY

Vacancy Cost \$0

**GROSS INCOME \$348,565**

## EXPENSES SUMMARY

Expenses \$107,802

Property Tax \$49,589

**OPERATING EXPENSES \$157,391**

**NET OPERATING INCOME \$191,174**

### RUSTAM MUHAROMOV

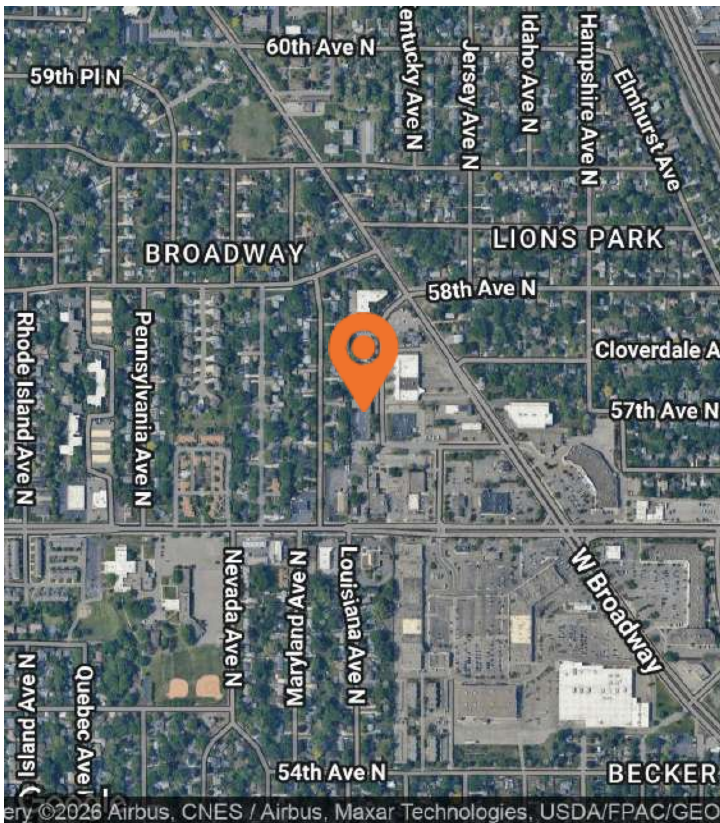
MN #40413417

952.444.3333

info@pybe.com

pybe.com | 7401 Bush Lake Road, Edina, MN 55439 | 612.444.3333





**LOCATION DESCRIPTION**

Crystal, Minnesota, part of the Minneapolis–St. Paul metro, offers a prime location for those seeking long-term stability and accessibility. Positioned just west of Downtown Minneapolis with direct routes via Highway 169, Highway 100, and Bass Lake Road, the area provides excellent access for industrial, flex, and service users.

The Northwest Submarket continues to attract strong business growth due to its established infrastructure, skilled workforce, and proximity to major employers.

The community is known for its quality public schools, safe neighborhoods, and convenient retail and dining options. With a balanced mix of residential and commercial development, Crystal presents an appealing, stable environment for long-term growth and investment.

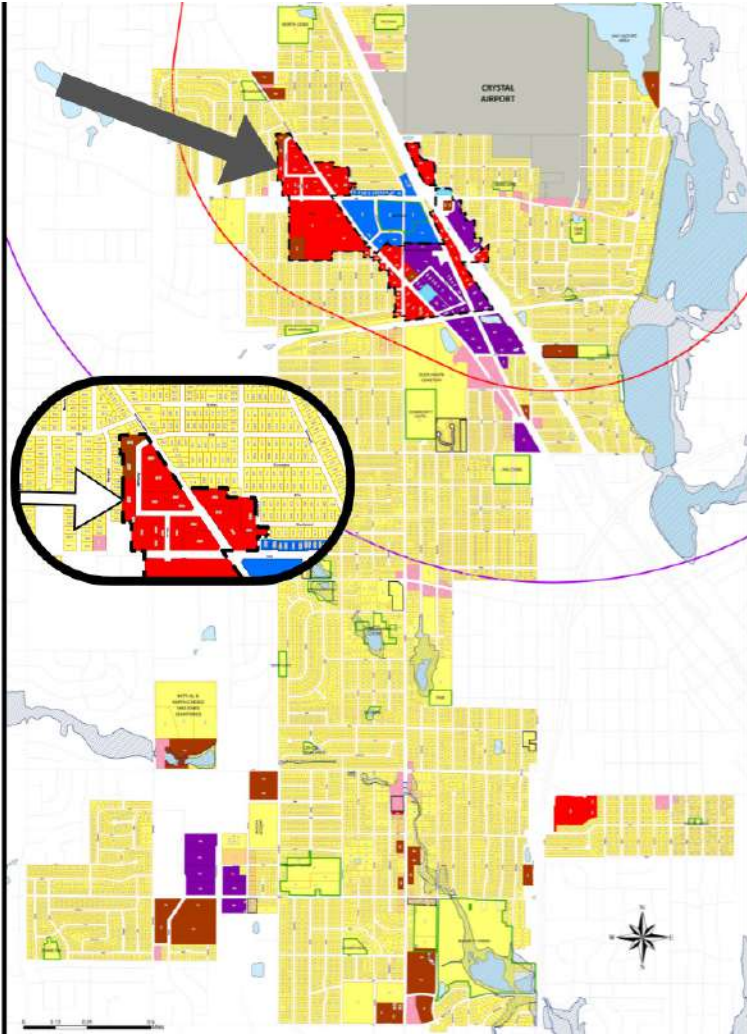
**LOCATION DETAILS**

Market	Minneapolis–St. Paul (Twin Cities)
Sub Market	Crystal
County	Hennepin County
Cross Streets	Kentucky Ave N & 57th Ave N

**RUSTAM MUHARAMOV**

MN #40413417  
 952.444.3333  
 info@pybe.com  
 pybe.com | 7401 Bush Lake Road, Edina, MN 55439 | 612.444.3333





## Official Zoning Map

### BASE ZONING DISTRICTS

- R1- LOW DENSITY RESIDENTIAL
- R2- MEDIUM DENSITY RESIDENTIAL
- R3- HIGH DENSITY RESIDENTIAL
- NC- NEIGHBORHOOD COMMERCIAL
- C- COMMERCIAL
- TC- TOWN CENTER CORE
- I- INDUSTRIAL
- AP- AIRPORT DISTRICT

LAND USE ZONE I (SAME AS AIRPORT DISTRICT)

LAND USE ZONE II

AIRSPACE ZONING LIMITS

### OVERLAY DISTRICTS

- PLANNED DEVELOPMENT DISTRICTS (PD)
- TOWN CENTER PLANNED DEVELOPMENT (TC-PD)
- PROPERTIES REZONED TO TC-PD
- CITY PARK LAND
- WATER BODIES
- FLOODPLAIN OVERLAY DISTRICTS

Approved Amendments: Official Zoning Map		
Ordinance No.	Adopted by City Council	Comments

Disclaimer:  
The Official Zoning Map is subject to change by action of the Crystal City Council. Any disagreement(s) or inconsistencies between this map and an ordinance adopted by the city council, the ordinance shall prevail.

Official Zoning District Map, Crystal, Minnesota  
We the undersigned certify that this is the Official Zoning Map, adopted by Crystal City Council on April 2nd, 2024.

*10-3-25 [Signature]*  
*9/3/25 [Signature]*

**RUSTAM MUHARAMOV**

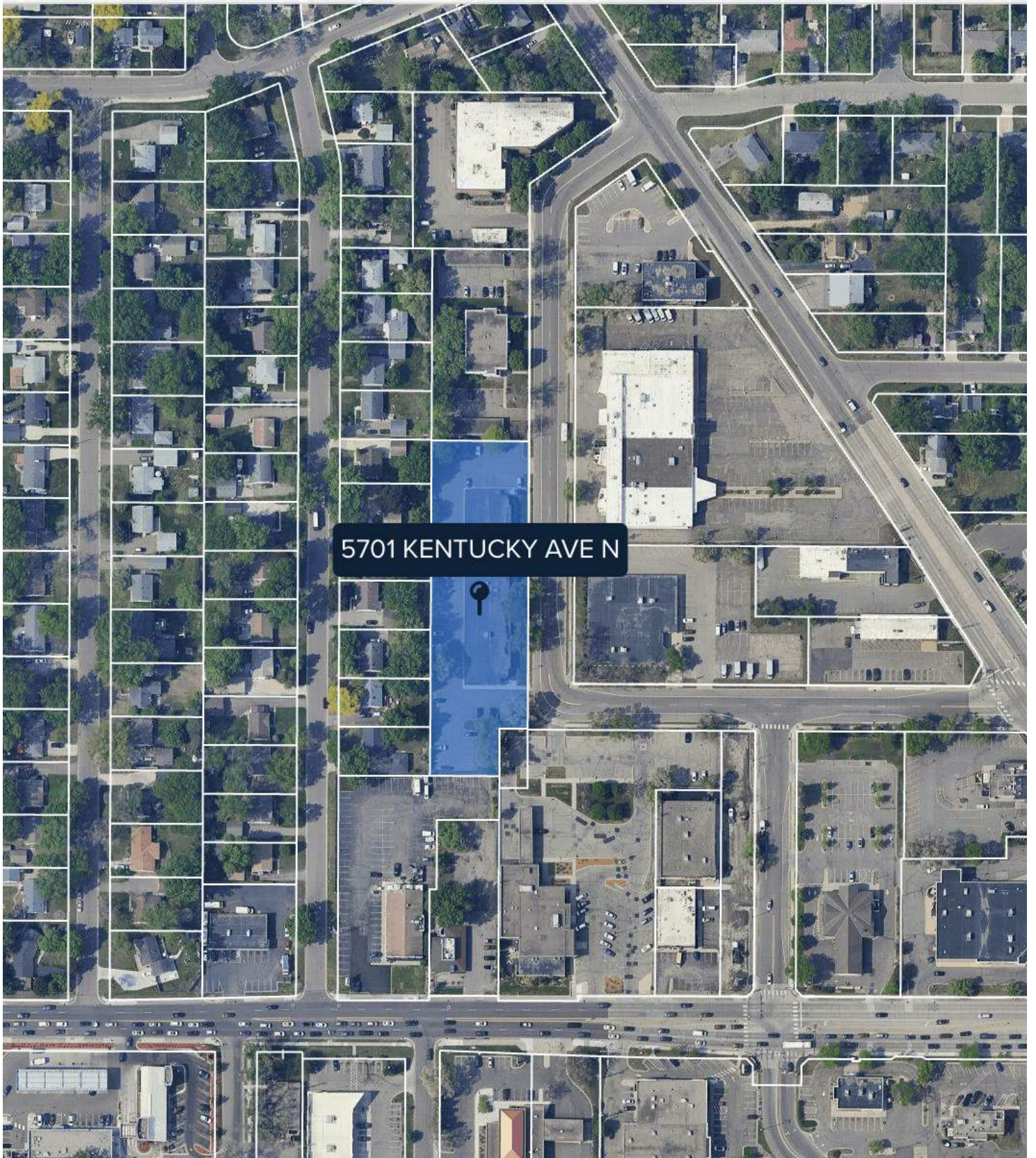
MN #40413417

952.444.3333

info@pybe.com

pybe.com | 7401 Bush Lake Road, Edina, MN 55439 | 612.444.3333





**RUSTAM MUHAROMOV**

MN #40413417

952.444.3333

info@pybe.com

pybe.com | 7401 Bush Lake Road, Edina, MN 55439 | 612.444.3333





**RUSTAM MUHAROMOV**

MN #40413417

952.444.3333

info@pybe.com

pybe.com | 7401 Bush Lake Road, Edina, MN 55439 | 612.444.3333





**RUSTAM MUHARAMOV**

MN #40413417  
952.444.3333  
info@pybe.com  
pybe.com | 7401 Bush Lake Road, Edina, MN 55439 | 612.444.3333





**RUSTAM MUHARAMOV**

MN #40413417

952.444.3333

info@pybe.com

pybe.com | 7401 Bush Lake Road, Edina, MN 55439 | 612.444.3333





**RUSTAM MUHAROMOV**

MN #40413417

952.444.3333

info@pybe.com

pybe.com | 7401 Bush Lake Road, Edina, MN 55439 | 612.444.3333





**RUSTAM MUHAROMOV**  
MN #40413417  
952.444.3333  
info@pybe.com  
pybe.com | 7401 Bush Lake Road, Edina, MN 55439 | 612.444.3333





**RUSTAM MUHARAMOV**

MN #40413417  
952.444.3333  
info@pybe.com  
pybe.com | 7401 Bush Lake Road, Edina, MN 55439 | 612.444.3333





**RUSTAM MUHARAMOV**

MN #40413417  
952.444.3333  
info@pybe.com  
pybe.com | 7401 Bush Lake Road, Edina, MN 55439 | 612.444.3333





**RUSTAM MUHARAMOV**

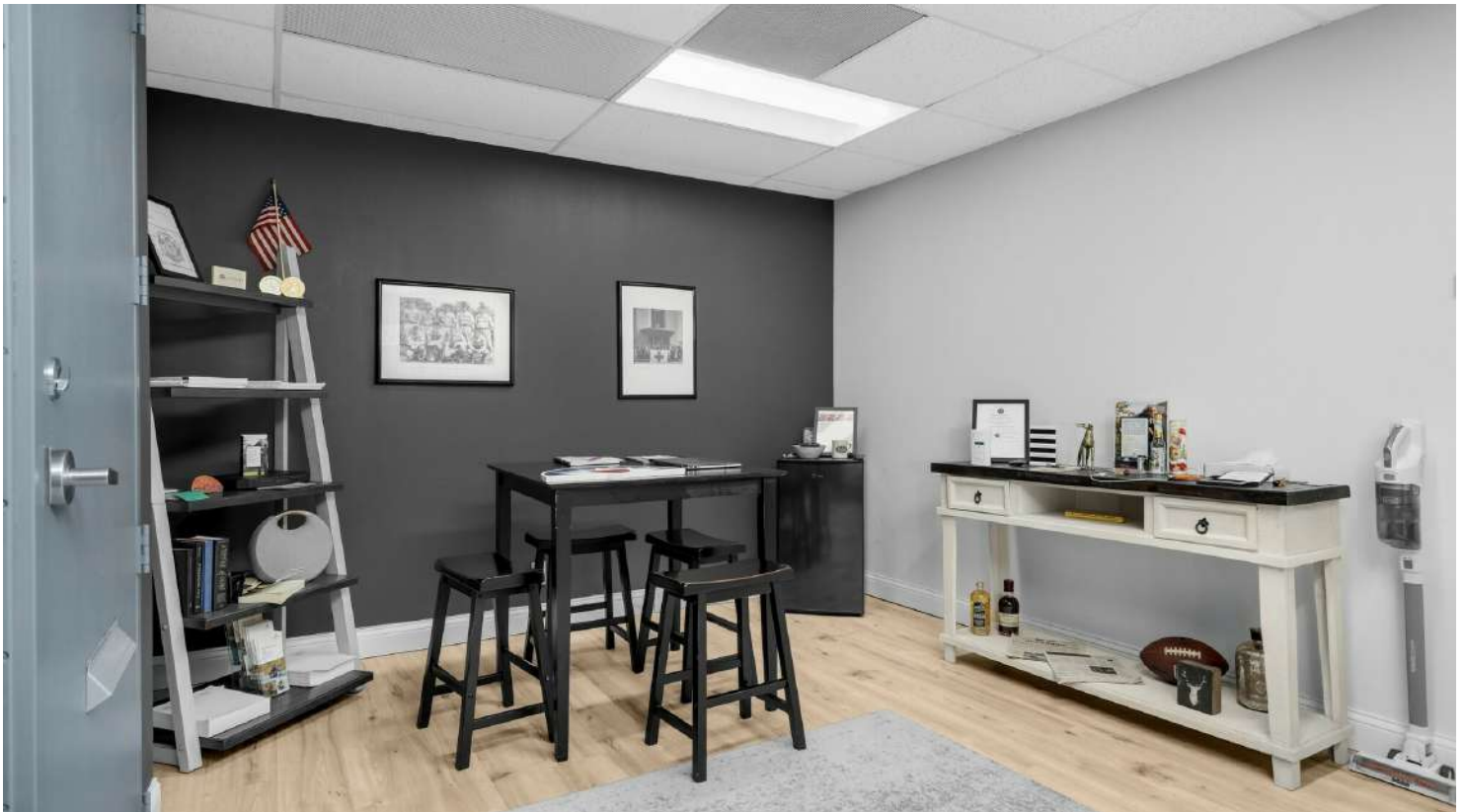
MN #40413417

952.444.3333

info@pybe.com

pybe.com | 7401 Bush Lake Road, Edina, MN 55439 | 612.444.3333





**RUSTAM MUHARAMOV**

MN #40413417

952.444.3333

info@pybe.com

pybe.com | 7401 Bush Lake Road, Edina, MN 55439 | 612.444.3333





**RUSTAM MUHARAMOV**

MN #40413417  
952.444.3333  
info@pybe.com  
pybe.com | 7401 Bush Lake Road, Edina, MN 55439 | 612.444.3333





**RUSTAM MUHARAMOV**

MN #40413417

952.444.3333

info@pybe.com

pybe.com | 7401 Bush Lake Road, Edina, MN 55439 | 612.444.3333





**RUSTAM MUHARAMOV**  
MN #40413417  
952.444.3333  
info@pybe.com  
pybe.com | 7401 Bush Lake Road, Edina, MN 55439 | 612.444.3333





**RUSTAM MUHARAMOV**

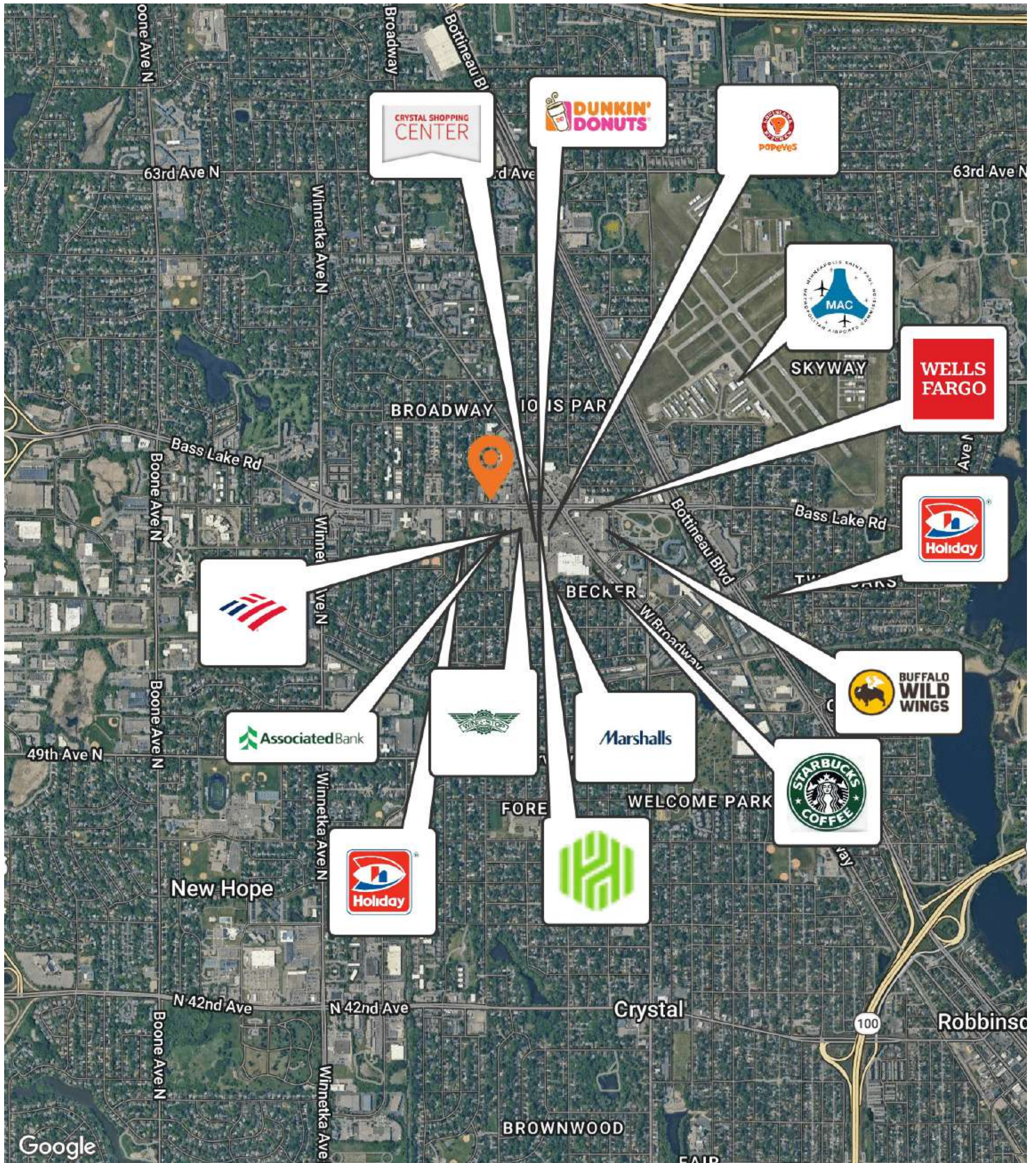
MN #40413417

952.444.3333

info@pybe.com

pybe.com | 7401 Bush Lake Road, Edina, MN 55439 | 612.444.3333





**RUSTAM MUHARAMOV**

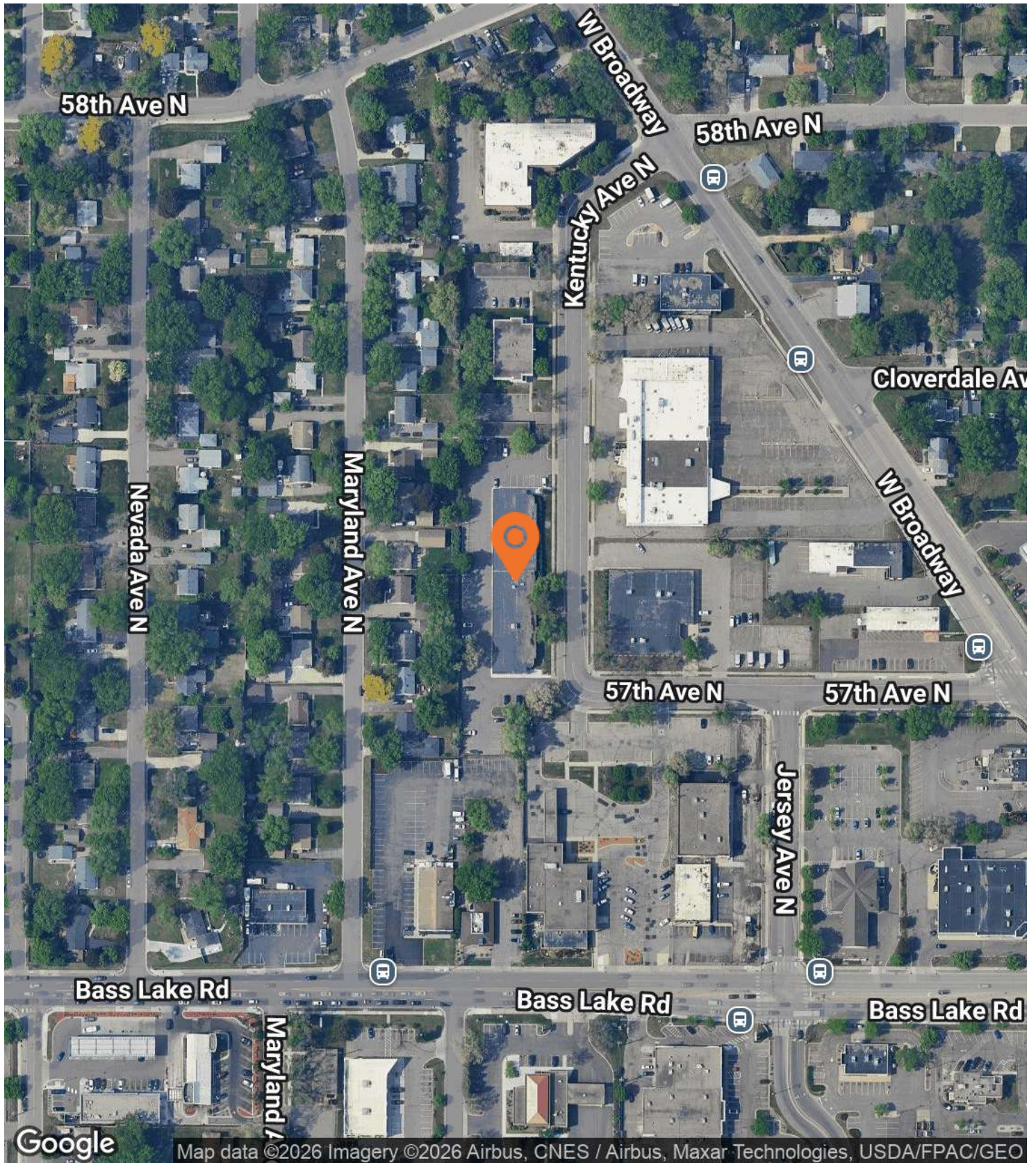
MN #40413417

952.444.3333

info@pybe.com

pybe.com | 7401 Bush Lake Road, Edina, MN 55439 | 612.444.3333





**RUSTAM MUHARAMOV**

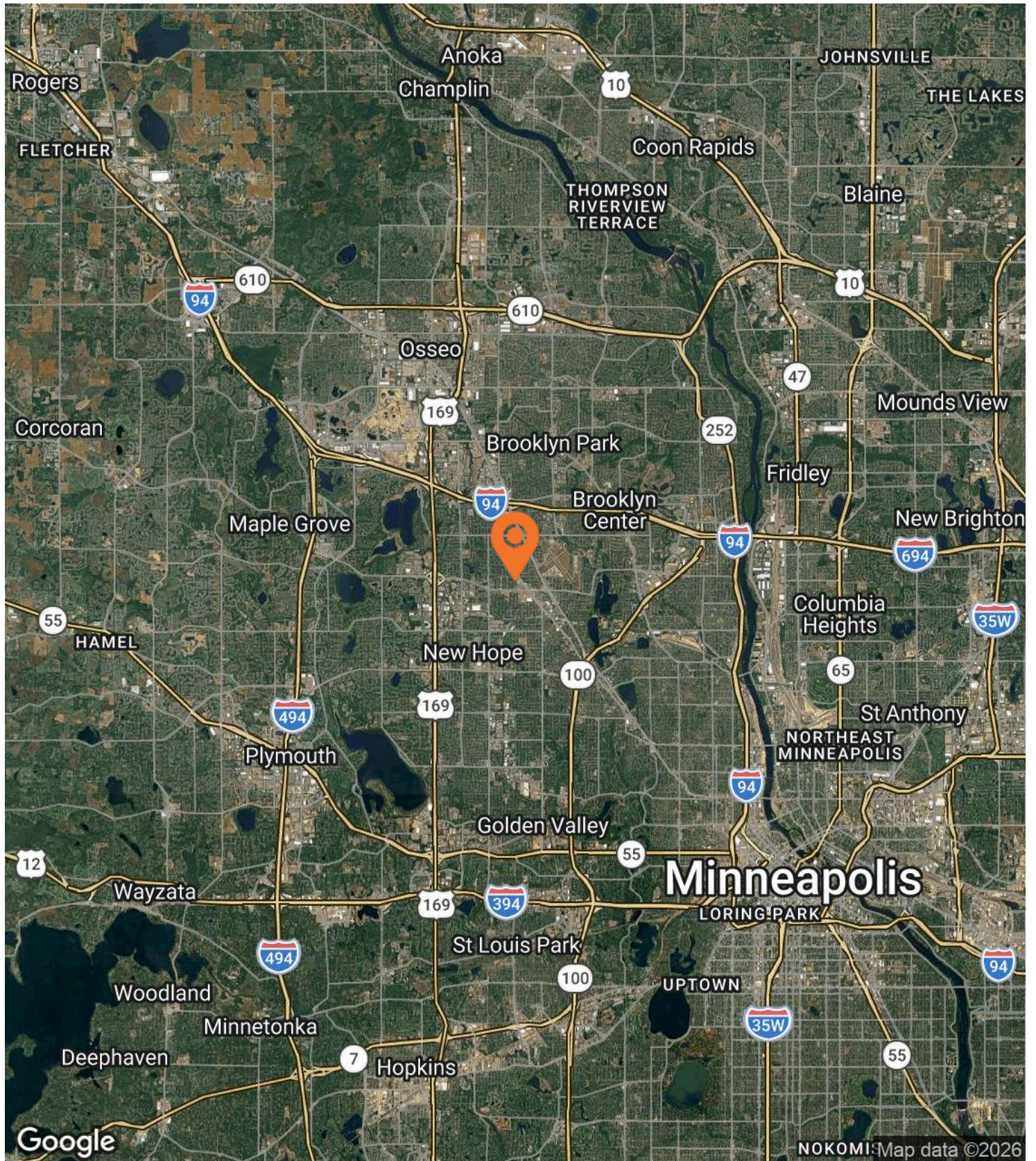
MN #40413417

952.444.3333

info@pybe.com

pybe.com | 7401 Bush Lake Road, Edina, MN 55439 | 612.444.3333





## RUSTAM MUHARAMOV

MN #40413417

952.444.3333

info@pybe.com

pybe.com | 7401 Bush Lake Road, Edina, MN 55439 | 612.444.3333



**BUYERS & BUYERS AGENTS VERIFY ALL INFORMATION** - All information provided herein is deemed reliable but is not guaranteed. Buyers and buyers' agents are strongly advised to verify all information independently, including but not limited to property details, measurements, taxes, zoning, and any other data relevant to their decision. Neither the seller nor the listing broker makes any warranties or representations as to the accuracy or completeness of the information provided.

The Property is available for purchase on an "as-is, where-is" basis. Neither the Seller nor the Agent/Broker provides any representations or warranties regarding the correctness of the information provided in this information package. The materials provided herein contain highly confidential information and are intended exclusively for the review by prospective Buyers of the interest outlined in this document. The enclosed materials and any information they contain may not be used for any purpose other than as specified, nor disclosed to any third party without the express written consent of the Seller. The materials provided are solely to aid the prospective investor's independent due diligence, for which they are entirely responsible. The information herein is derived from sources believed to be reliable; however, neither the Agent nor the Seller, nor any of their respective representatives, affiliates, officers, employees, shareholders, partners, or directors make any explicit or implied representation or warranty as to its accuracy or completeness.

The summaries of legal or other documents herein are not comprehensive interpretations but are merely preliminary overviews of the primary provisions they contain. Neither the Agent nor the Seller will be liable for the accuracy or completeness of the information provided here, nor for any other communications transmitted to or made available to the recipient, or for any actions taken or decisions made based on such information. Prospective parties are expected to conduct their own investigations and form their own conclusions without relying on the material provided herein. Buyers, their agents, and their teams are entirely responsible for reviewing and confirming the validity and accuracy of all information provided. The sellers and their agents do not provide any representations or warranties concerning the validity or accuracy of the information. The Seller reserves the right to withdraw the Property from the market at any time and for any reason, at its sole and absolute discretion. Both the Seller and the Agent reserve the right to reject any and all expressions of interest or offers for the Property and to terminate discussions with any party at any time, at their sole discretion, with or without notice.

This Offering Memorandum is subject to omissions, corrections, errors, changes in price, other terms, and prior sale or withdrawal from the market, all without notice. The Seller is under no legal obligation or commitment to any interested party who reviews the enclosed materials, conducts further investigations, or makes an offer to purchase the Property, unless and until a binding written agreement to purchase the Property has been fully executed, delivered, and approved by the Seller, and all conditions to the Seller's obligations thereunder have been satisfied or waived. The Agent is not authorized to make any representations or enter into any agreements on behalf of the Seller.

By taking possession of and reviewing the information provided herein, the recipient acknowledges and agrees to the following: (a) the materials enclosed and the information they contain are highly confidential and must be treated with the utmost discretion, to be held in strict confidence, and returned to the Agent or the Seller promptly upon request; (b) the recipient will not directly or indirectly contact employees or tenants of the Property regarding any details of the enclosed materials or the Property itself without prior written consent from the Seller or the Agent; and (c) no part of the enclosed materials may be copied or reproduced without the Seller's or Agent's prior written permission, except as allowed under any Confidentiality and/or Registration Agreement signed by the recipient(s) with the Broker/Agent. The information presented in this Marketing Brochure is proprietary and highly confidential, intended solely for the party receiving it from Broker / Agent. It must not be disclosed to any other person or entity without Broker / Agents written consent.

This brochure is prepared to provide unverified summary information to prospective purchasers to initiate a preliminary interest in the subject property only. It is not meant to replace a thorough due diligence process. Broker / Agent have not conducted any investigations and do not provide any warranties or representations concerning the potential income or expenses of the property, the property's future financial performance, its size and square footage, the presence of hazardous materials like PCBs or asbestos, compliance with state and federal regulations, the physical condition of any buildings, or the financial status or business prospects of any tenants or their intentions regarding continued occupancy.

The contents of this Marketing Brochure have been compiled from sources believed to be reliable; however, Broker / Agent have verified this information, nor have they conducted any investigations into the above-mentioned aspects. Therefore, they make no warranty or representation as to the accuracy or completeness of the information contained within this brochure. All potential buyers are responsible for conducting their own due diligence and verifying all the information provided herein. The Seller reserves all rights to control the offer and acceptance process, including, but not limited to, the right to accept or reject any offer based on its sole and absolute discretion. The Seller will be bound only by properly executed and enforceable agreements, should any be entered into. **ALL INFORMATION PROVIDED IS PRIVILEGED AND CONFIDENTIAL.**

## **RUSTAM MUHARAMOV**

MN #40413417

952.444.3333

info@pybe.com

pybe.com | 7401 Bush Lake Road, Edina, MN 55439 | 612.444.3333



---

## NON-ENDORSEMENT NOTICE.

The Broker/Agent is not affiliated with, sponsored by, or endorsed by any commercial tenants or lessees mentioned in this marketing package. The use of any company logos or names is for informational purposes only and does not imply any affiliation, sponsorship, or endorsement of the Broker/Agent by those entities. They are included solely to provide context regarding current tenants and lessees for prospective buyers.

This document is intended solely for informational purposes. It contains estimates and forward-looking projections related to the property, such as expenses, current rent, potential future income, and property features. These figures are speculative and may not reflect actual historical collections or future performance.

The Broker/Agent has prepared these projections in good faith, based on subjective evaluations and current market assumptions. However, no express or implied warranty is made as to the accuracy, completeness, or attainability of any figures presented. Various factors—such as market fluctuations, economic conditions, zoning regulations, utility costs, taxes, operating expenses, and local, state, or federal laws—may significantly affect the actual results, including potential rent growth.

These projections do not account for tenant turnover, lease renegotiations, unexpected capital expenditures, or changes in market conditions. Therefore, all prospective buyers and their advisors are strongly encouraged to perform their own independent due diligence. This includes, but is not limited to, thorough inspections of the property's physical condition, review of relevant legal and regulatory matters, analysis of the local real estate market, and verification of all financial assumptions.

Additionally, this document may include forward-looking statements that are inherently subject to risks, uncertainties, and unpredictable variables. As a result, actual outcomes may differ materially from those described. The Broker/Agent expressly disclaims any liability for direct or indirect losses or damages arising from reliance on the contents of this document. This includes errors, omissions, or misstatements, whether resulting from negligence, misrepresentation, or otherwise.

By accepting this document, the recipient agrees that the Broker/Agent shall bear no responsibility for any decisions or transactions made based on the information provided. Recipients are advised to seek independent legal, financial, and tax counsel prior to making any investment decisions. This disclaimer is not intended as legal, tax, or financial advice, and does not form the basis of any binding agreement. No obligations of any kind shall be imposed upon the Broker/Agent unless otherwise required by applicable law. The information herein is subject to change without notice. The Broker/Agent assumes no responsibility to update any projections or estimates as new data becomes available or as future events unfold.

### RUSTAM MUHARAMOV

MN #40413417

952.444.3333

info@pybe.com

pybe.com | 7401 Bush Lake Road, Edina, MN 55439 | 612.444.3333

