

LAND AVAILABLE FOR SALE



OFFERING SUMMARY

Sale Price: Call for Pricing

Lot Size: 4.8 Acres

Zoning: C2 and small portion is R5

Market: East

PROPERTY OVERVIEW

Parcel located at the corner of N. Foster Road and Lakeview Drive.

PROPERTY HIGHLIGHTS

- Southwest corner of N. Foster Road and Lakeview Drive
- 4.801 Acres
- 800' of Frontage on Foster Road
- 240' of Frontage on Lakeview Drive
- Utilities: 8" SAWS gravity sewer main located along Lakeview Drive which can be extended to site by Seller. 12" SAWS water main on Lakeview Drive and 16" SAWS main on N. Foster Road. CPS gas line along N. Foster Road
- Zoning - C2 with small portion R5

DEMOGRAPHICS

	1 MILE	3 MILES	5 MILES
Total Households	3,082	23,087	57,194
Total Population	10,430	72,317	167,225
Average HH Income	\$55,657	\$54,108	\$55,246

DICK MCCALED

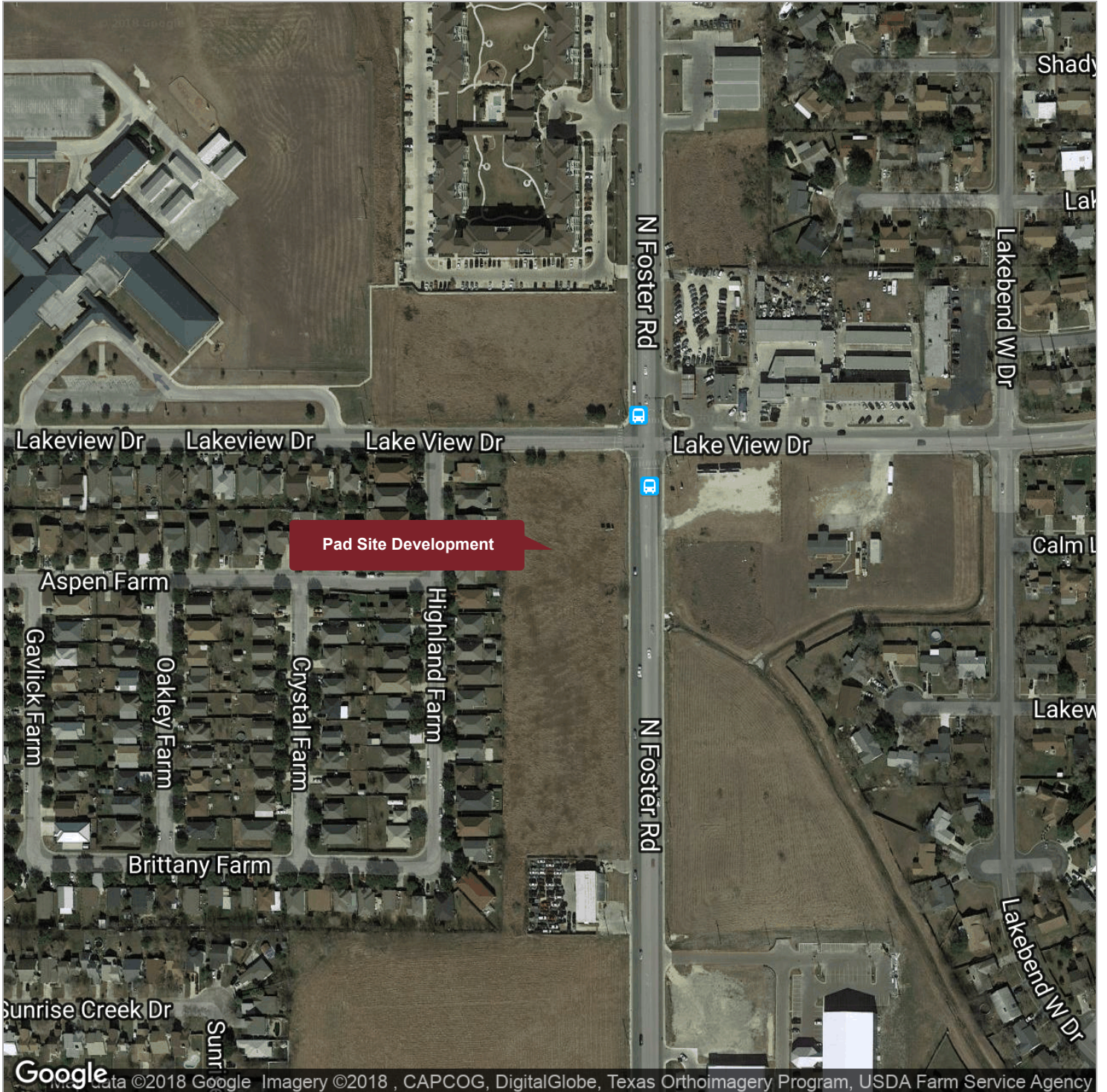
Broker

210.826.0036 x23

dick@rfmcommercial.com

This information was obtained from sources deemed reliable; RFM Commercial, Inc. has not verified makes no representations or warranties, expressed or implied, as to the completeness or accuracy thereof. The presentation of this real estate information is subject to error, omission, change to price, prior sale or lease, or withdrawal without notice. You and your advisors should conduct a careful independent investigation of the property to determine if it is suitable for your intended purpose.

LAND AVAILABLE FOR SALE



DICK MCCALED

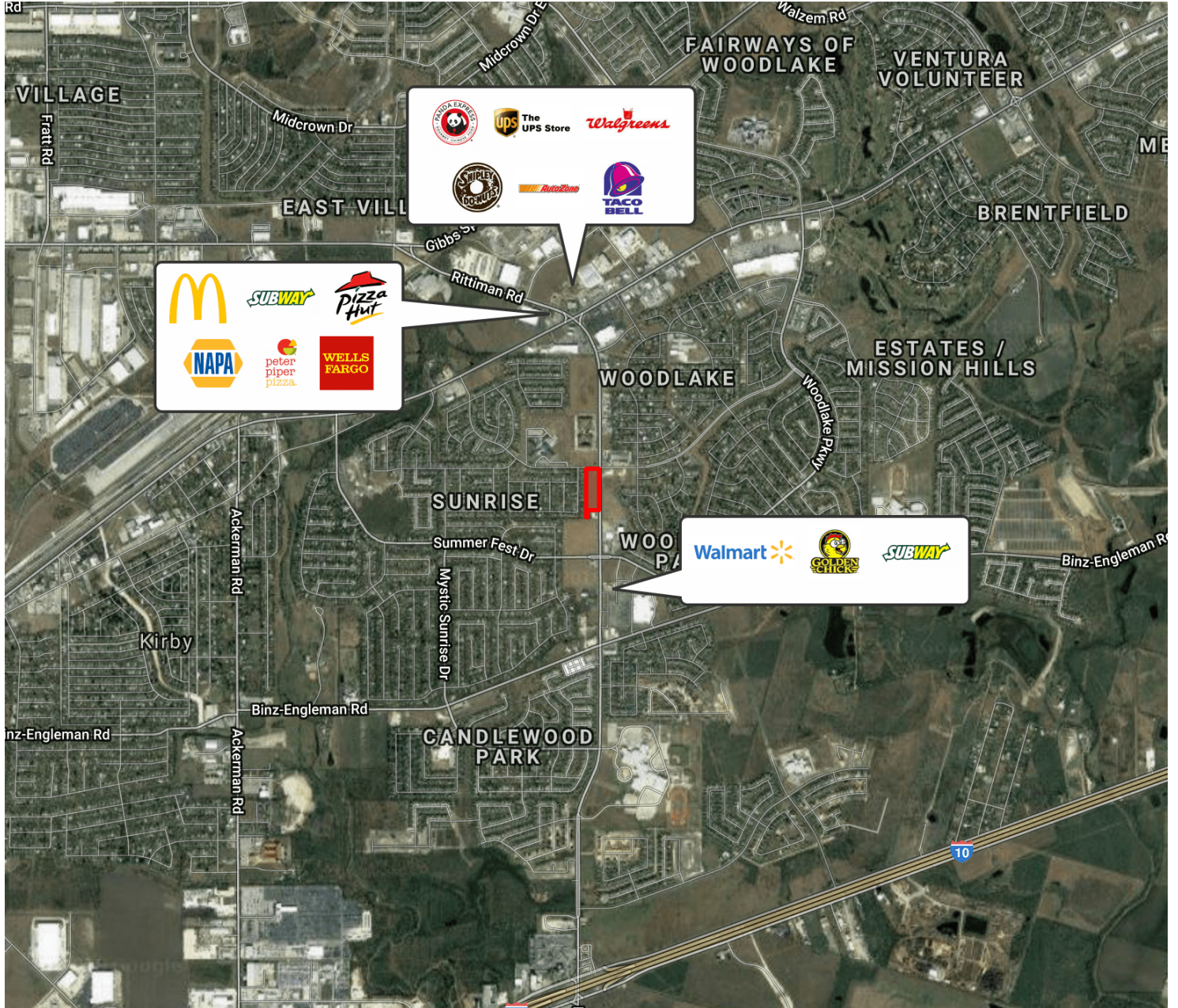
Broker

210.826.0036 x23

dick@rfmcommercial.com

This information was obtained from sources deemed reliable; RFM Commercial, Inc. has not verified makes no representations or warranties, expressed or implied, as to the completeness or accuracy thereof. The presentation of this real estate information is subject to error, omission; change to price; prior sale or lease; or withdrawal without notice. You and your advisors should conduct a careful independent investigation of the property to determine if it is suitable for your intended purpose.

LAND AVAILABLE FOR SALE



Map data ©2018 Google Imagery ©2018 , CAPCOG, DigitalGlobe, Landsat / Copernicus, Texas General Land Office, Texas Orthoimagery Program, USDA Farm Service Agency

DICK MCCALED

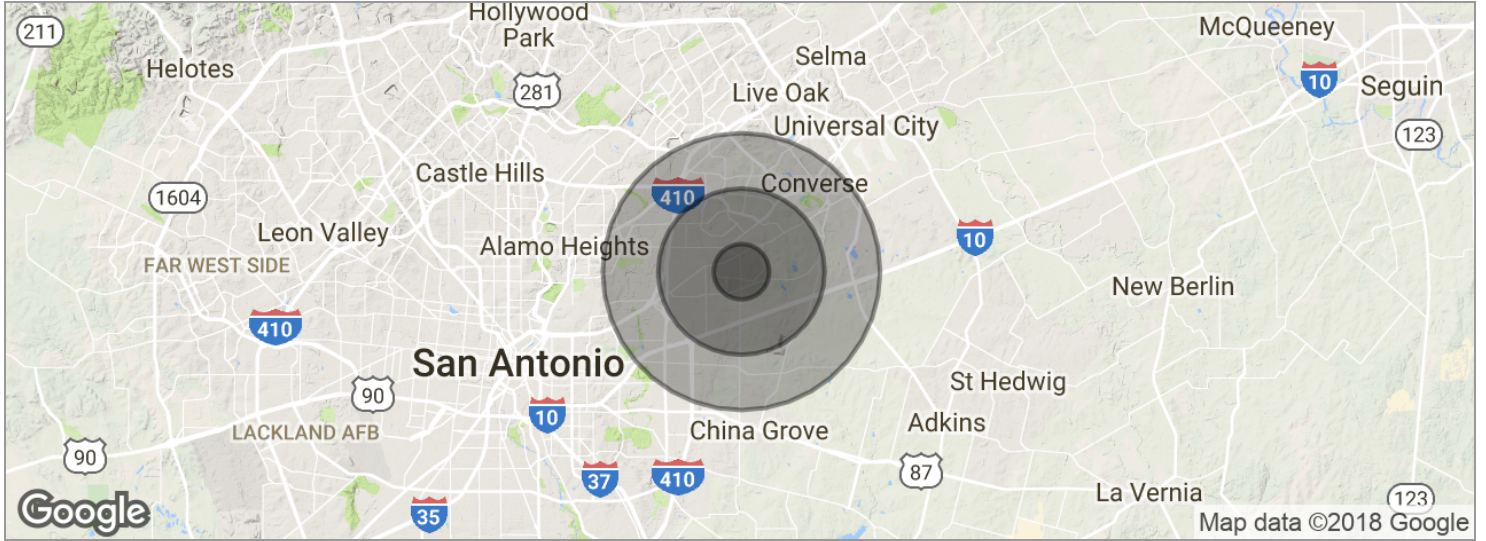
Broker

210.826.0036 x23

dick@rfmcommercial.com

This information was obtained from sources deemed reliable; RFM Commercial, Inc. has not verified makes no representations or warranties, expressed or implied, as to the completeness or accuracy thereof. The presentation of this real estate information is subject to error, omission; change to price; prior sale or lease, or withdrawal without notice. You and your advisors should conduct a careful independent investigation of the property to determine if it is suitable for your intended purpose.

LAND AVAILABLE FOR SALE



POPULATION	1 MILE	3 MILES	5 MILES
------------	--------	---------	---------

Total population	10,430	72,317	167,225
Median age	26.9	30.8	33.0
Median age (male)	26.3	29.7	31.7
Median age (Female)	27.4	31.9	34.2

HOUSEHOLDS & INCOME	1 MILE	3 MILES	5 MILES
---------------------	--------	---------	---------

Total households	3,082	23,087	57,194
# of persons per HH	3.4	3.1	2.9
Average HH income	\$55,657	\$54,108	\$55,246
Average house value	\$70,915	\$101,544	\$113,397

* Demographic data derived from 2010 US Census

DICK MCCALED

Broker

210.826.0036 x23

dick@rfmcommercial.com

This information was obtained from sources deemed reliable; RFM Commercial, Inc. has not verified makes no representations or warranties, expressed or implied, as to the completeness or accuracy thereof. The presentation of this real estate information is subject to error; omission; change to price; prior sale or lease; or withdrawal without notice. You and your advisors should conduct a careful independent investigation of the property to determine if it is suitable for your intended purpose.

