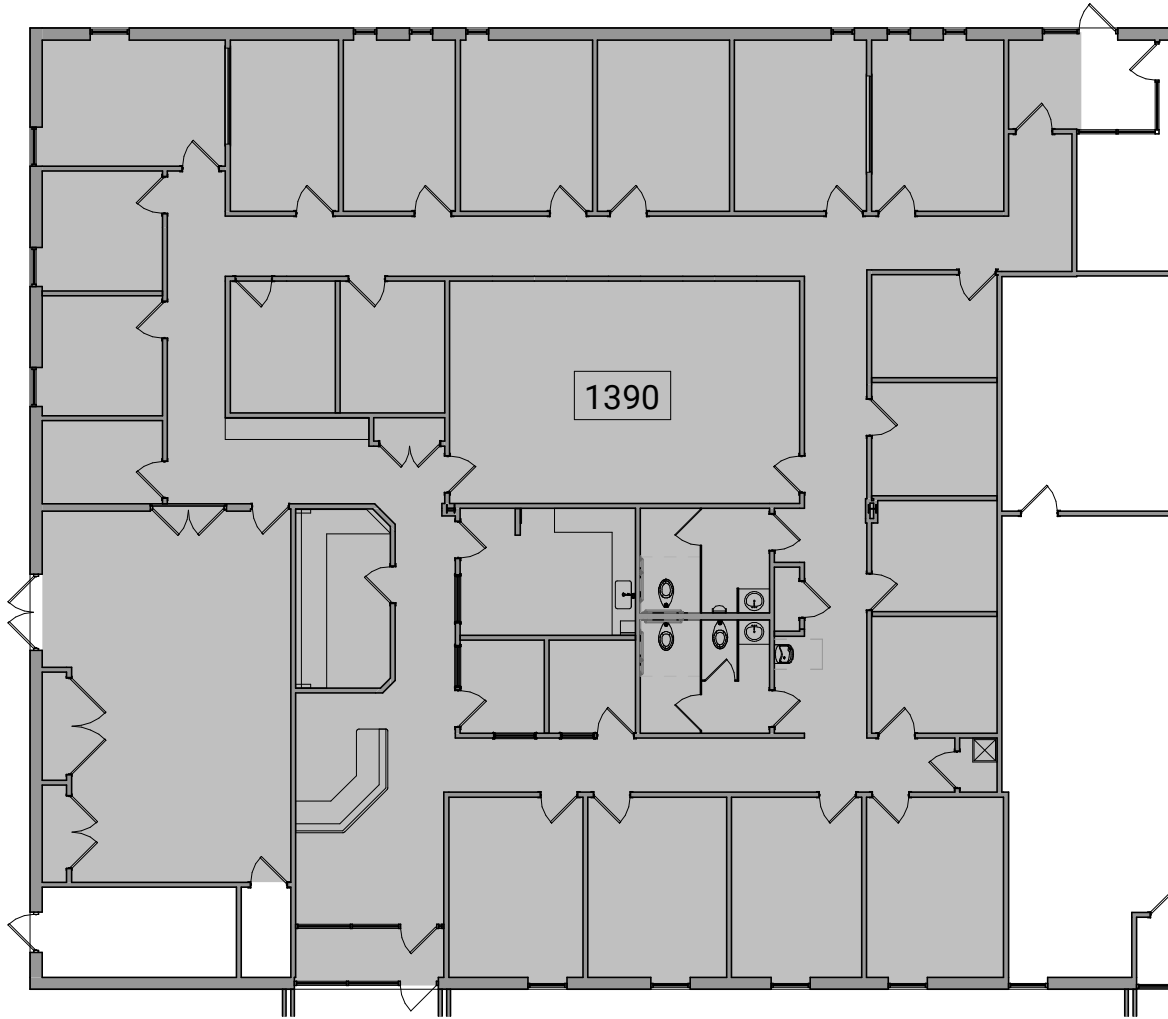


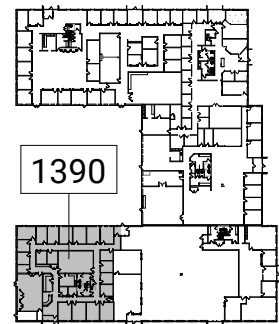
FOR LEASE

1300 Eisenhower Place

1300 Eisenhower Pl., Ann Arbor, MI 48108



2 Suite 1390 - Partial Level 1 Existing Floor Plan
1390 8' 16' 32' 1/16" = 1'-0"



1 Key Plan - Level 1
1390 160' 320' 1" = 160'-0"

FOR MORE INFORMATION CONTACT KAREN O'NEIL

Commercial Leasing Associate | koneil@oxfordcompanies.com | 734.665.6500

A LICENSED REAL ESTATE BROKER. ALL INFORMATION FURNISHED IS FROM SOURCES DEEMED RELIABLE. NO WARRANTY OR REPRESENTATION IS MADE AS TO THE ACCURACY THEREOF AND SAME IS SUBMITTED SUBJECT TO ERRORS, OMISSION OF PRICE, RENTAL, OR OTHER CONDITIONS, PRIOR TO SALE, LEASE OR FINANCING OR WITHDRAWAL

Dwg Date

10/27/2020