



Millfields Road, Bilston, Wolverhampton WV4 6JE

FOR SALE

INDUSTRIAL / WAREHOUSE

Size
25,855 sq ft (2,402 sq m)

Purchase Price
£1,600,000

Rare opportunity to purchase a substantial freehold property.

Height to eaves - 8.8m. max.

Craneage between 5 - 10 Tons.

Within 5 miles of J10 M6

Location

The premises are prominently located to the A4039 Millfields Road within close proximity of the junction with Spring Road. Wolverhampton city centre and Bilston town centre are within 3 miles and 1.5 miles respectively. Junction 10 of the M6 is within 5 miles.

Description

The property comprises a two bay workshop/warehouse of steel framed construction with part glazed lined profiled metal sheeted walls surmounted by two pitched profiled metal sheeted roofs incorporating filon roof lights. Height to eaves between 7.9m (25' 11") - 8.8m (28' 11") approx. Access is via two roller shutters doors.

The property includes internal two storey brick built offices. The accommodation comprises a range of private/open plan rooms with toilets and a rest room.

Parking is available to the left hand side of the building.

Accommodation (Gross Internal Area) approx.

	SQ.FT	SQ.M
Bay 1 -	5,858	(544.42)
Bay 2 -	17,367	(1,614.02)
Offices -	2,364	(219.7)
Lobby/Office -	266	(24.79)
	_____	_____
Total	25,855	(2,402.93)
	_____	_____

Cranage

Bay No. 1 - 2 x Fellows Stringer 5 ton cranes.

Bay No. 2 - 1 x Wharton 7.5 ton crane and 1 x Smith Keighley 10 tons crane.

Please note that the Vendors/Agents have not tested/certified the cranes.

Services

All mains services are connected. A gas fired boiler feeds panel radiators to the principal two storey offices.

Rating Assessment

Rateable Value: £58,500.

U.B.R - 55.5p in the £(2025/26).

Purchase Price

£1,600,000.

V.A.T.

The purchase price is not subject to V.A.T.

Fixtures and Fittings

All usual tenants fixtures and fittings and those not mentioned in these particulars are expressly excluded from the sale.

Energy Performance Certificate

EPC rating - C.

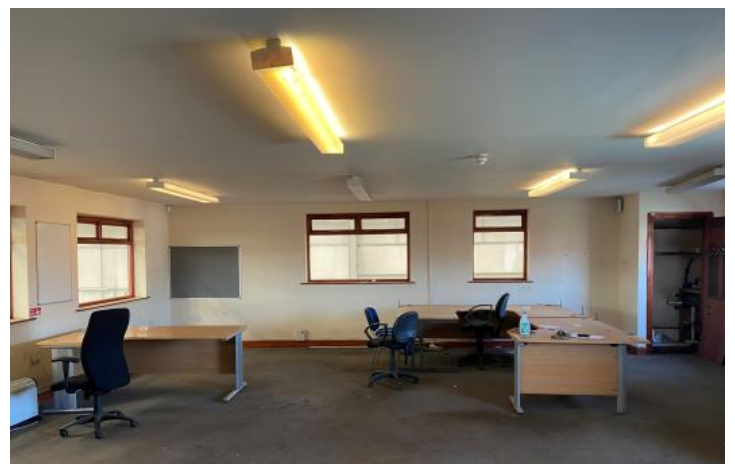
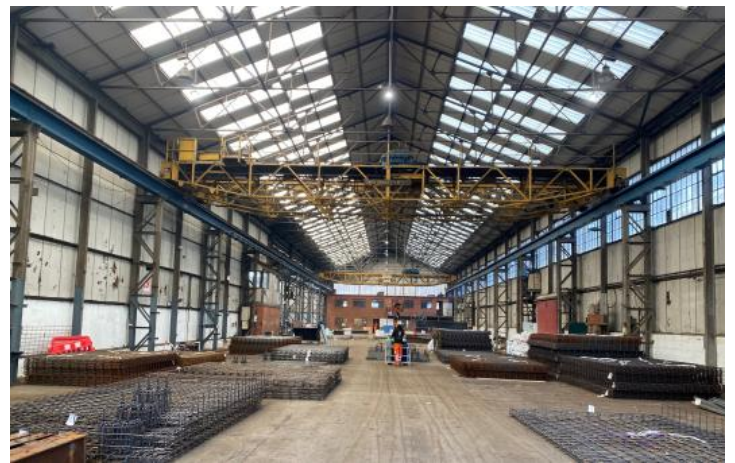
Viewing

Strictly by prior appointment with the Sole Agents.

Sellers Chartered Surveyors
Matthew Pearcey
Mob: 07764 269803
Email: matthewpearcey@sellers-surveyors.co.uk

MISREPRESENTATION ACT 1967: Sellers for itself and for the vendors or lessors of this property whose agents they are give notice that the particulars are a general outline only for the guidance of intending purchasers or lessees, and do not constitute an offer of contract. All descriptions and any other details are given without responsibility and any intending purchasers or tenants should not rely on them as statements or representations of fact but must satisfy themselves by inspection or otherwise as to the correctness of them. No employee of Sellers has any authority to make or give any representation or warranty whatever in relation to this property.

Additional Images



Additional Images

