



9800 Two Notch Road

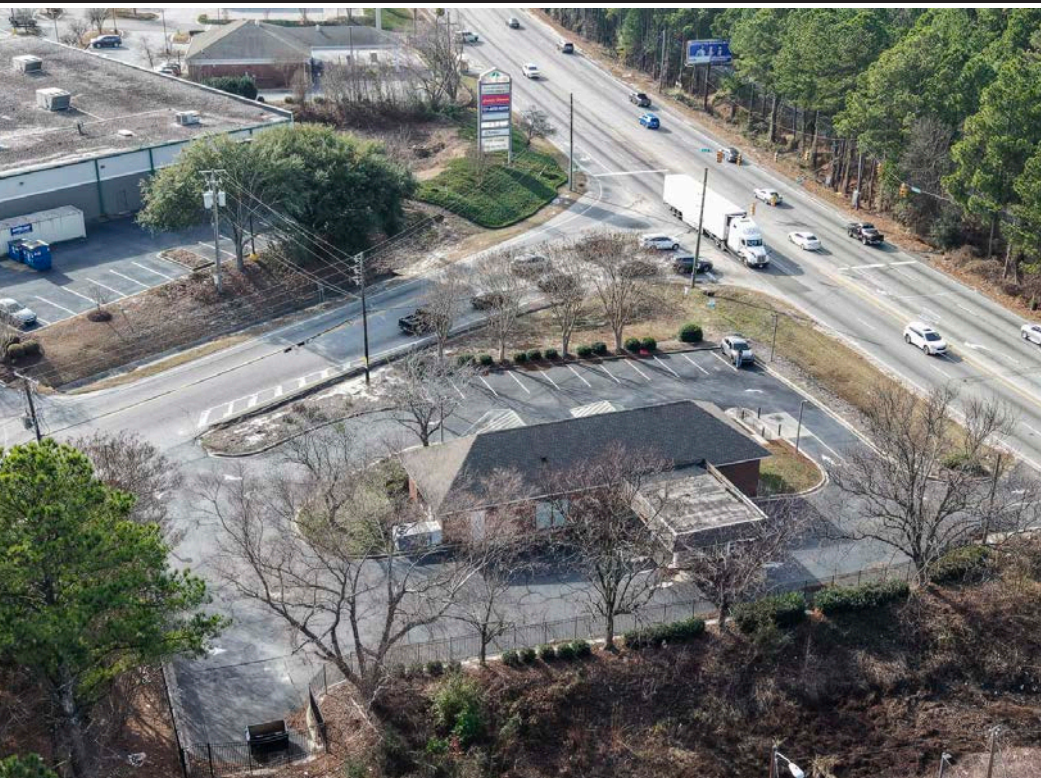
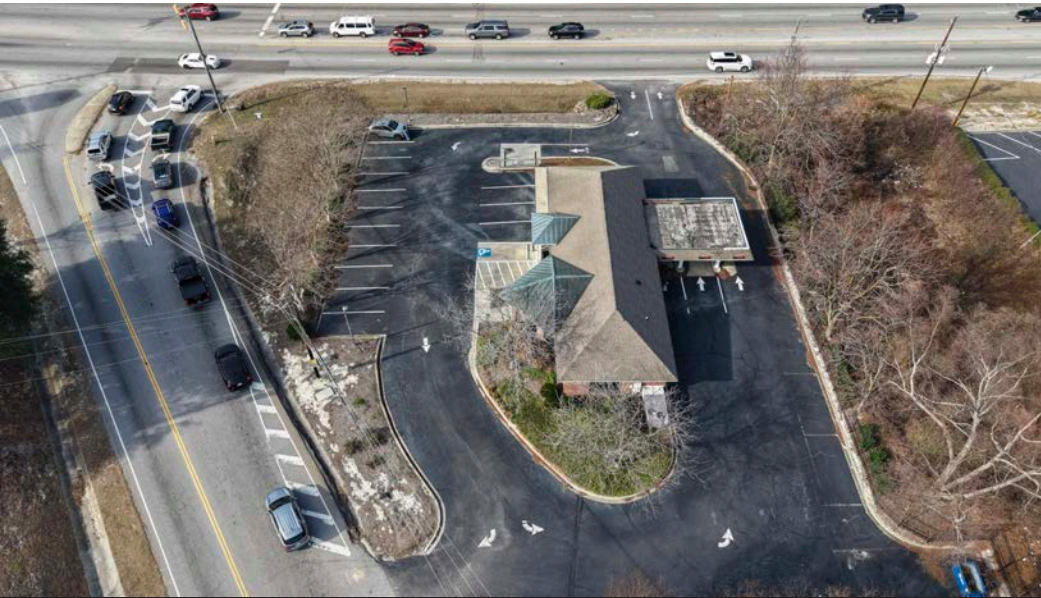
COLUMBIA, SOUTH CAROLINA 29223

DEVELOPMENT OPPORTUNITY IN NE COLUMBIA

TRINITY
PARTNERS

Property Details

FOR SALE: \$995,000



BUILDING OVERVIEW

Located on a hard corner with a signalized intersection along one of Columbia's busiest thoroughfares.

Two points of ingress and egress

Building has enough economic life remaining that it can be upfitted and repurposed, or the site can be redeveloped.

Building SF: $\pm 1,975$

Retired bank branch with drive through

Building constructed in 1986 and renovated in 2006

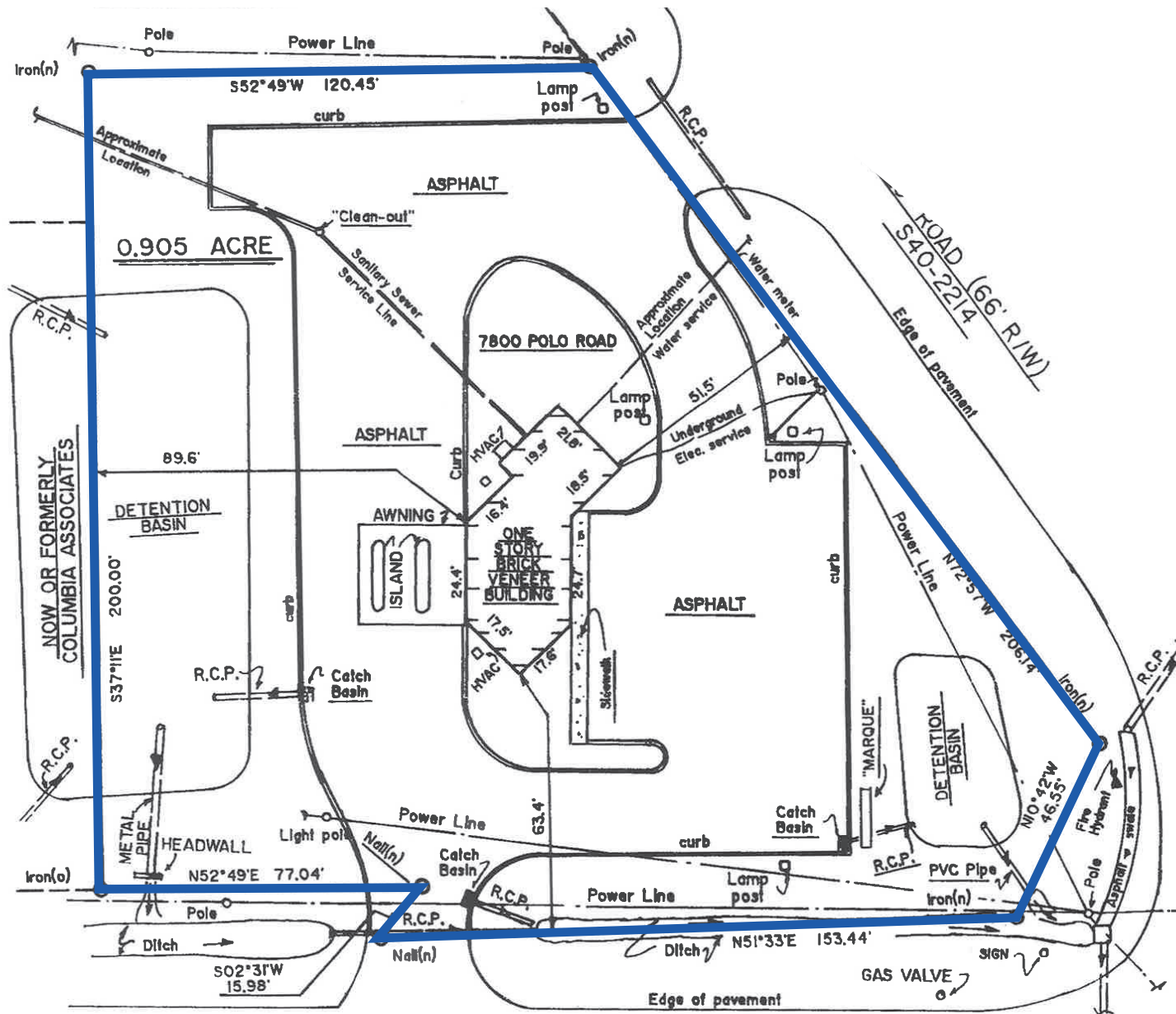
21 Parking Spaces

Zoning: General Commercial

Zoning Jurisdiction: Richland County

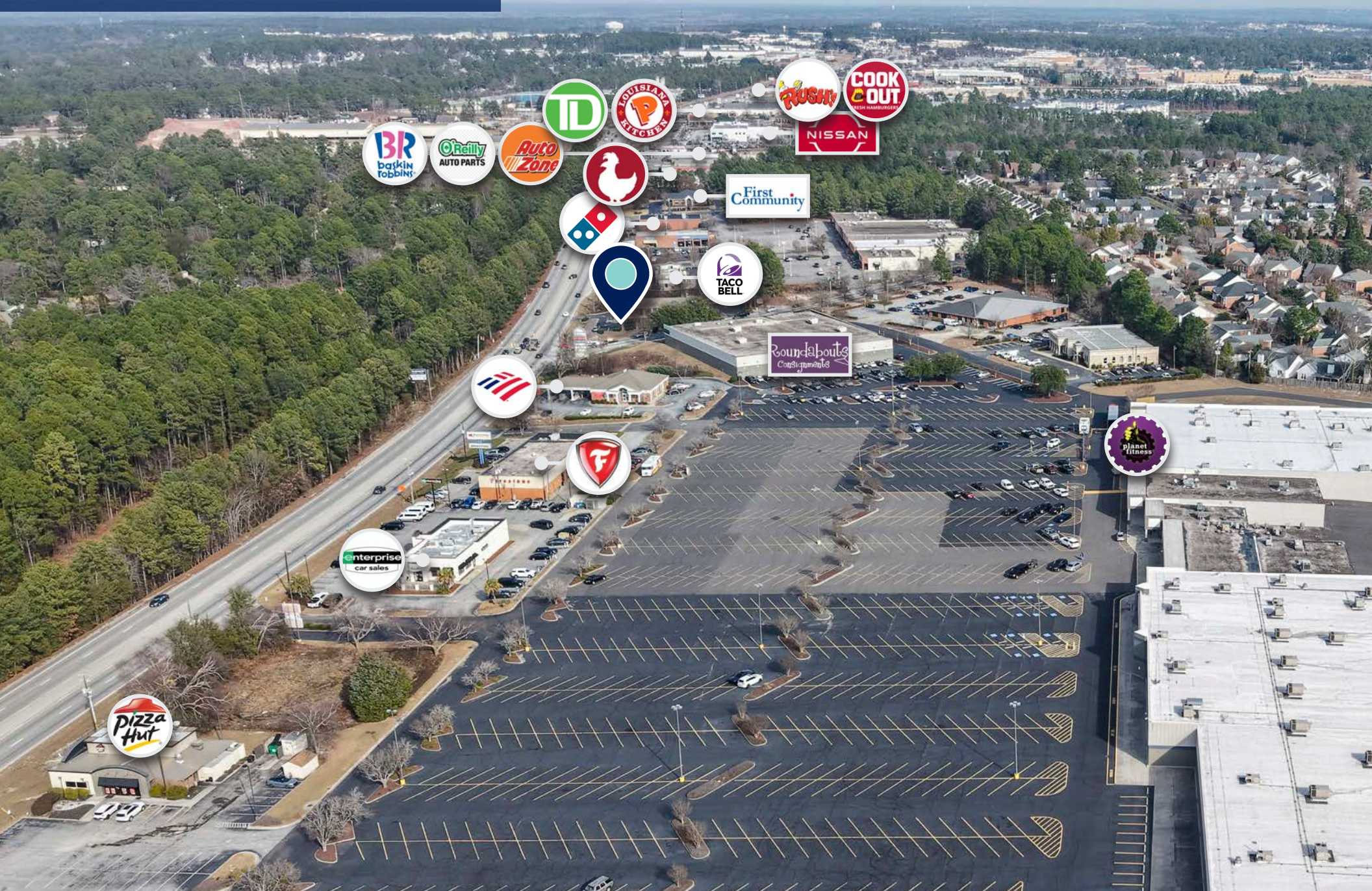
Traffic VPD: Two Notch Road – 32,100 VPD; Polo Road – 9,500 VPD

Property Plat

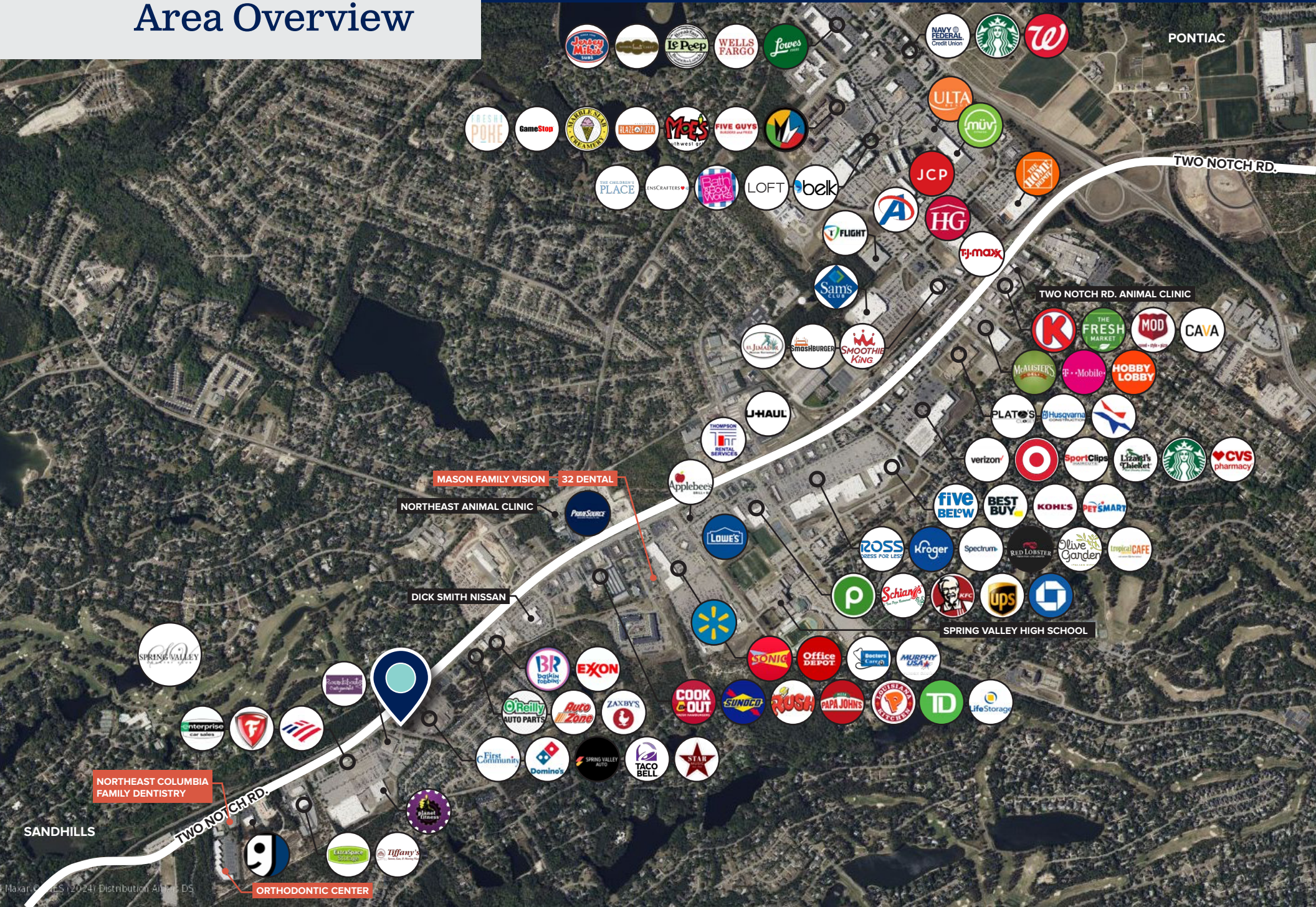


TWO NOTCH ROAD (R/W VARIES)
U. S. HWY. NO. 1

Location Aerial



Area Overview



CONTACT



PEYTON BRYANT, CCIM, SIOR

Managing Partner
pbryant@trinity-partners.com
803.567.1428



JOHN COLEMAN

Brokerage Associate
jcoleman@trinity-partners.com
803.567.1876

TRINITY PARTNERS COLUMBIA

1501 Main Street, Suite 410
Columbia, SC 29201
803.567.5454

