

171 Church Street

1,879 Square Feet - Suite 370

Charleston
South Carolina, 29401

Walking Distance to the Charleston City Market



Contact Us

Charlie Carmody
Senior Vice President
+1 843 577 1155
charles.carmody@cbre.com

Ryan Carmody
Vice President
+1 843 577 1162
ryan.carmody@cbre.com



Highlights

Beautiful suite in the historic Franke Building located on Church Street in Downtown Charleston walking distance to the Charleston City Market

- + Various shopping and restaurant amenities within walking distance
- + Provides large reception area, large conference room, work room, cubicle area, and four private offices with a window
- + Suite has 3 parking cards for the Cumberland Street garage at \$160.00 per month per card
- + Regime fees are \$1,190.23/mo and the 2024 taxes were \$8,445.70
- + TMS 458-05-03-178 and 458-05-03-179
- + \$565,000 Sales Price
- + Suite is currently leased through 12/31/2026

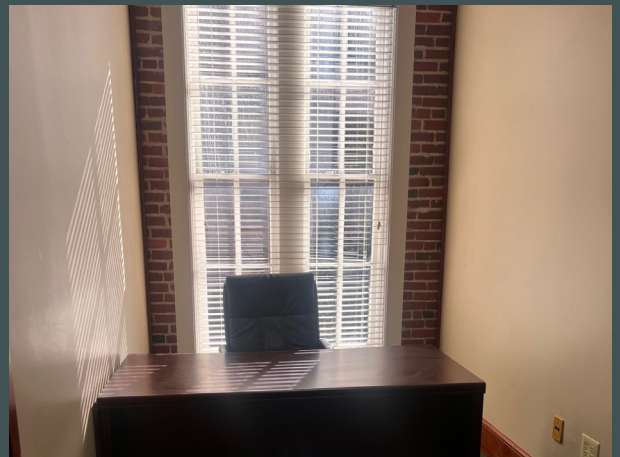
1,879

Square Feet

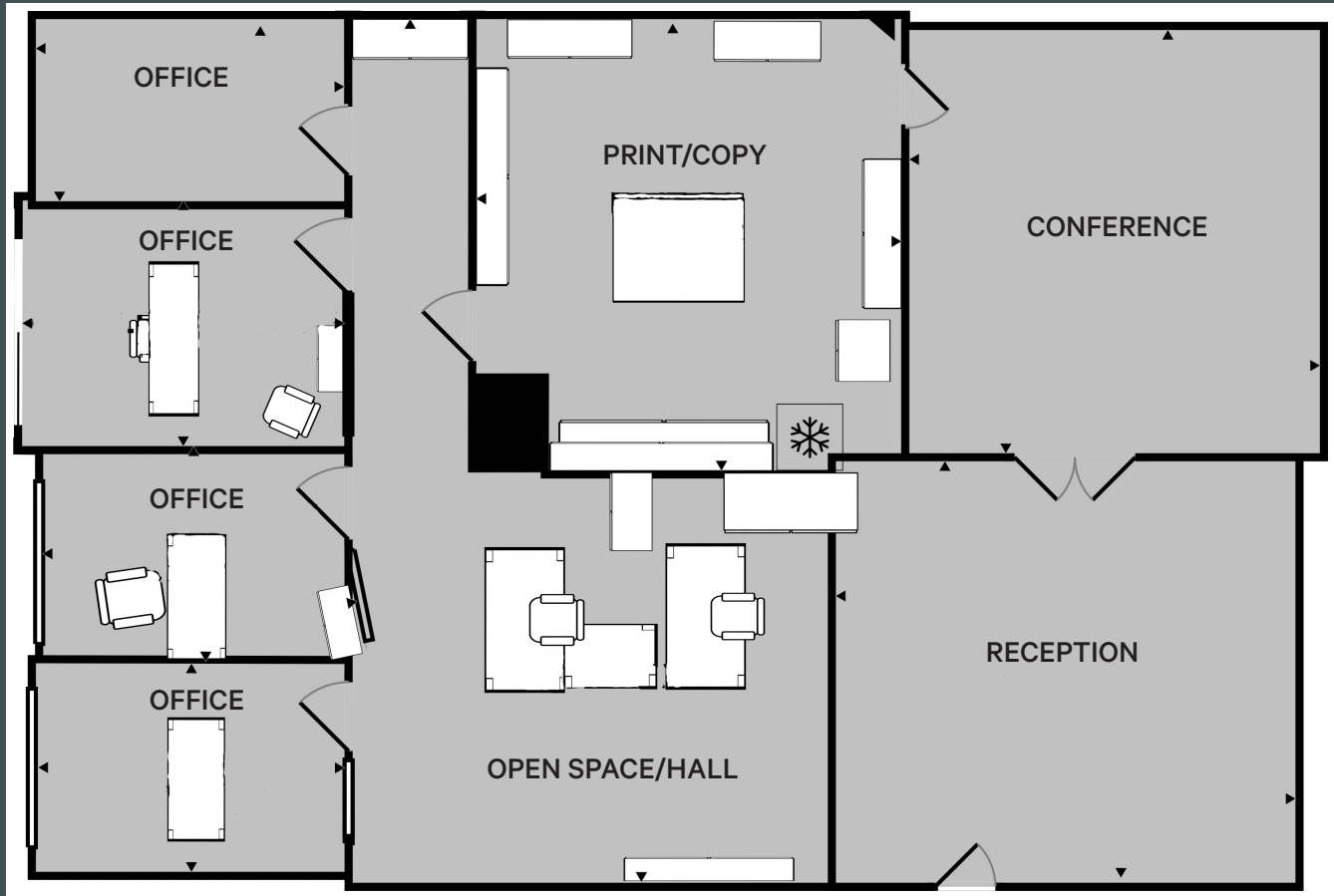
\$565K

Sales Price

Additional Photos



Floor Plan



1,879 SF



Contact Us

Charlie Carmody
Senior Vice President
+1 843 577 1155
charles.carmody@cbre.com

Ryan Carmody
Vice President
+1 843 577 1162
ryan.carmody@cbre.com

© 2026 CBRE, Inc. All rights reserved. This information has been obtained from sources believed reliable, but has not been verified for accuracy or completeness. You should conduct a careful, independent investigation of the property and verify all information. Any reliance on this information is solely at your own risk. CBRE and the CBRE logo are service marks of CBRE, Inc. All other marks displayed on this document are the property of their respective owners, and the use of such logos does not imply any affiliation with or endorsement of CBRE. Photos herein are the property of their respective owners. Use of these images without the express written consent of the owner is prohibited.