



CATHEDRAL SQUARE

790 N MILWAUKEE STREET
MILWAUKEE, WI



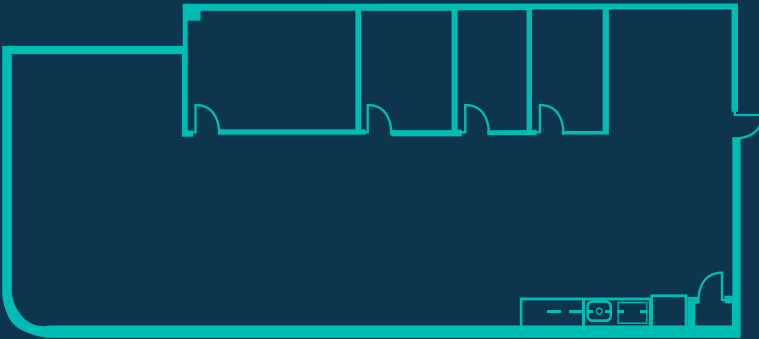
EXPANSIVE[®]

workspace

TEAM SUITE 400B

\$6199/MONTH

AVERAGE \$139/PERSON
ACCOMODATES HEADCOUNT OF UP TO 46



3120 SQUARE FEET OF PRIVATE SPACE
PLUS 3000+SF OF SHARED WORKSPACE,
COWORKING LOUNGE, KITCHEN, PHONE
BOOTHES & MORE

SOLUTION INCLUDES:



FULLY
FURNISHED



DIRECT FIBER
INTERNET &
WIFI ACCESS



EXPANSIVE
LOUNGE



COFFEE &
TEA



24/7 ACCESS



ON-SITE
MGMT



HIGH SPEED
PRINTERS



UTILITIES



MOTHERS'
ROOM



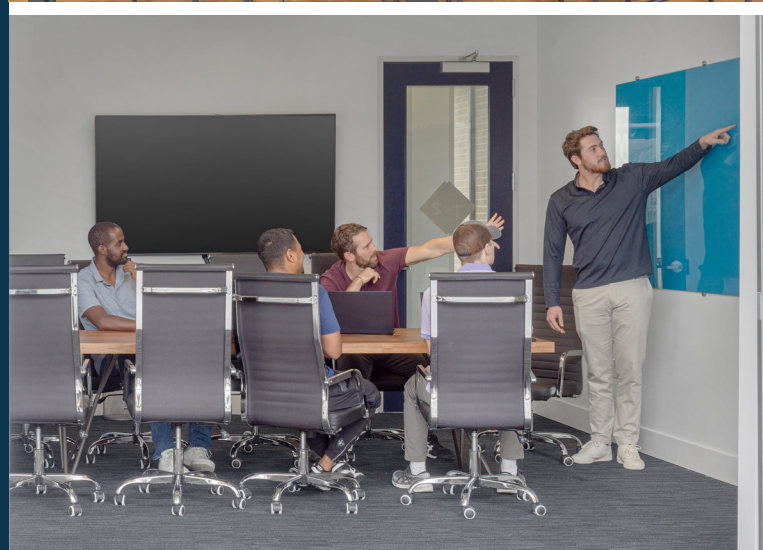
COMMUNITY
APP



BIKE ROOM



NETWORK
ACCESS



EXPLORE OUR AVAILABLE
TEAM SUITE OPTIONS TODAY!

CONTACT MEGAN LONGORIA

414.253.2254 | megan.longoria@expansive.com