

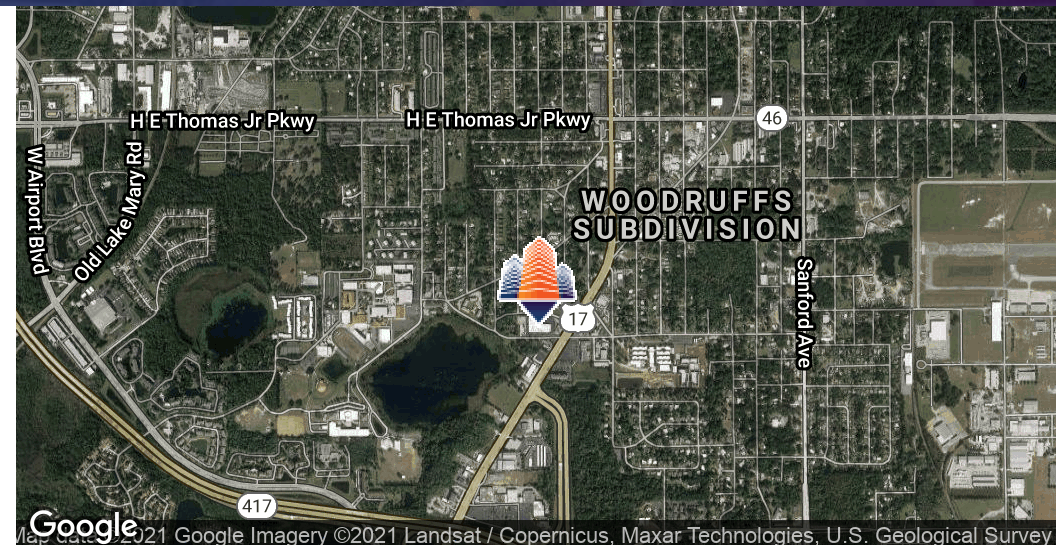
Sanford Plaza

2670 S Orlando Drive, Sanford, FL 32773



EQUITY
INVESTMENT
SERVICES

PROPERTY SUMMARY



PROPERTY HIGHLIGHTS

- 2,000 SF up to 12,429 SF Available
- Endcap Available
- Ideal for Both Retail and Medical Tenants
- Easy Access to Center with Multiple Points of Ingress/Egress
- Ample Parking
- 30,000+ Vehicles Per Day at the Intersection
- Located at the Intersection of 17/92 & Florida Street, Between Seminole High School & Pine Crest Elementary

OFFERING SUMMARY

Lease Rate:	Negotiable
Available SF:	2,000 - 12,429 SF
Building Size:	40,000 SF

DEMOGRAPHICS	1 MILE	3 MILES	5 MILES
Total Households	3,686	19,767	35,195
Total Population	10,168	55,080	97,357
Average HH Income	\$43,492	\$54,766	\$60,466

Nick Barbato

954.579.2672

nbarbato@eisre.com

Eric Portnoy

954.242.2010

eportnoy@eisre.com



7575 Dr. Phillips Blvd, Ste 390

Orlando, FL 32819

www.eisre.com

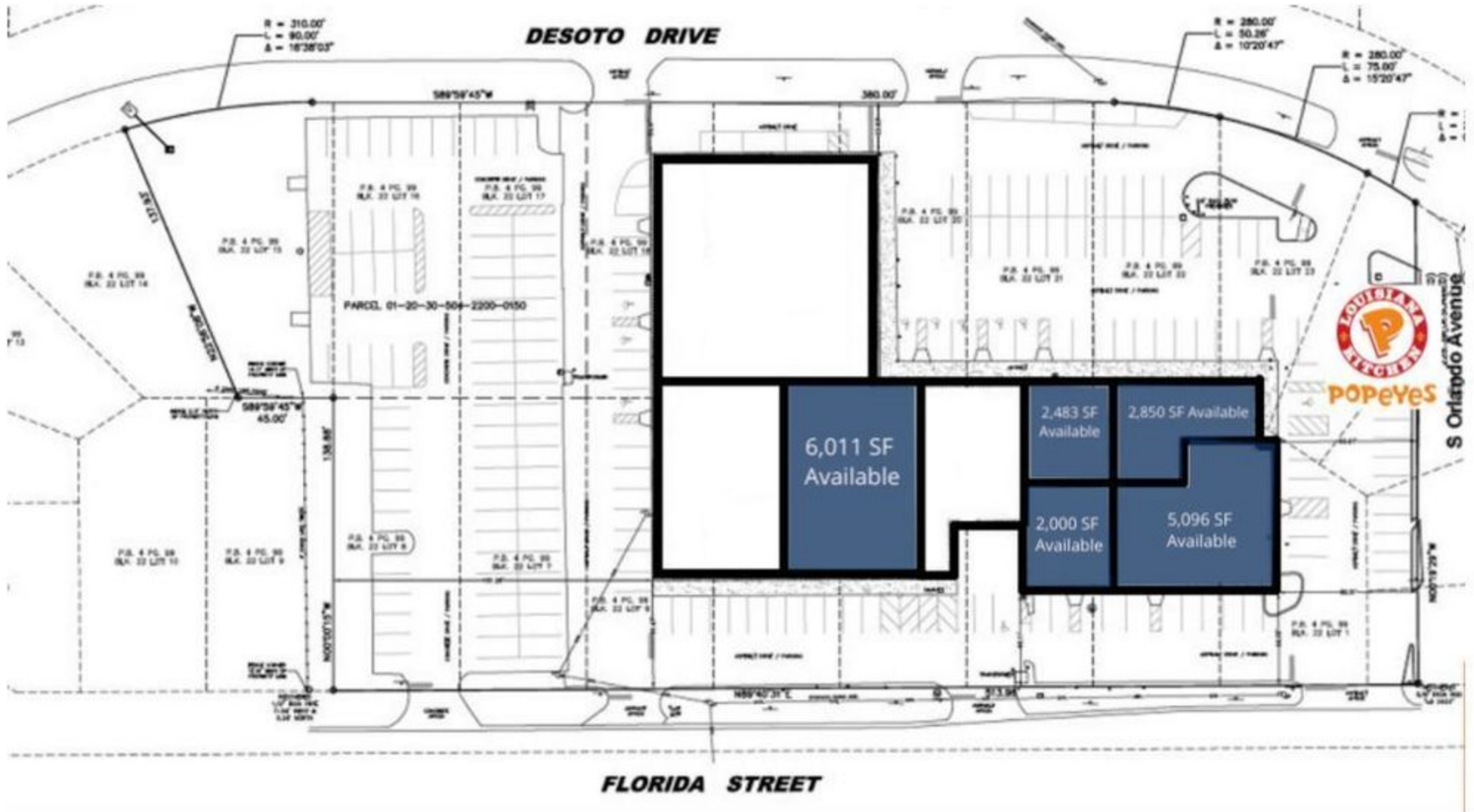
Sanford Plaza

2670 S Orlando Drive, Sanford, FL 32773



EQUITY
INVESTMENT
SERVICES

SITE PLAN



Nick Barbato
954.579.2672
nbarbato@eisre.com

Eric Portnoy
954.242.2010
eportnoy@eisre.com



7575 Dr. Phillips Blvd, Ste 390
Orlando, FL 32819
www.eisre.com

Sanford Plaza

2670 S Orlando Drive, Sanford, FL 32773



EQUITY
INVESTMENT
SERVICES

AREA MAP



Nick Barbato
954.579.2672
nbarbato@eisre.com

Eric Portnoy
954.242.2010
eportnoy@eisre.com



7575 Dr. Phillips Blvd, Ste 390
Orlando, FL 32819
www.eisre.com

Sanford Plaza

2670 S Orlando Drive, Sanford, FL 32773



EQUITY
INVESTMENT
SERVICES

DEMOGRAPHICS MAP & REPORT



POPULATION	1 MILE	3 MILES	5 MILES
Total Population	10,168	55,080	97,357
Average age	30.4	34.7	35.1
Average age (Male)	28.3	33.7	34.2
Average age (Female)	32.2	35.5	36.0
HOUSEHOLDS & INCOME	1 MILE	3 MILES	5 MILES
Total households	3,686	19,767	35,195
# of persons per HH	2.8	2.8	2.8
Average HH income	\$43,492	\$54,766	\$60,466
Average house value	\$175,807	\$220,338	\$256,222

Nick Barbato

954.579.2672

nbarbato@eisre.com

Eric Portnoy

954.242.2010

eportnoy@eisre.com



7575 Dr. Phillips Blvd, Ste 390

Orlando, FL 32819

www.eisre.com