

2350 MISSION COLLEGE BLVD, SANTA CLARA, CA

# MISSION CITY CENTER



JONES LANG LASALLE BROKERAGE, INC. REAL ESTATE LICENSE #: 01856260



# BUILDING AMENITIES



Crust Deli On-site



On-site Property Management



Updated Fitness Center



Showers and Lockers



Fitwel Certification



Communal Conference Rooms with Wifi and Monitors



EV Charging Stations



3/1000 Parking



Renovated Lobby



Staffed Security Desk from 7:00am - 7:00 pm



Modernized Elevators



**CONFERCING CENTER**



**MARKET READY SUITES**



**MISSION  
CITY CENTER**



**CRUST DELI ON-SITE**



**TENANT LOUNGE**

**FITNESS CENTER**



**LOCKER ROOMS**



**MISSION  
CITY CENTER**



**SHOWERS**



**NEW FITNESS EQUIPMENT**

# AREA AMENITIES



## WALK TIMES

4 MIN

SAN TOMAS AQUINO CREEKSIDE TRAIL

12 MIN

MISSION PARK MARKET

20 MIN

SANTA CLARA SQUARE

9 MIN

SAN JOSE INTERNATIONAL AIRPORT

6 MIN

MERCADO SHOPPING CENTER

5 MIN

LEVI'S STADIUM



## DRIVE TIMES



### MERCADO SHOPPING CENTER

- IN-N-OUT BURGER
- HOMEGOODS
- AMC THEATRE
- WALMART
- T.J. MAXX
- JAMBA
- THE ROASTED CRAB
- FEDEX OFFICE
- STARBUCKS
- SMOKE EATERS HOT WINGS
- WORLD WRAPS
- PANDA EXPRESS
- KRISPY KREME

### SANTA CLARA SQUARE

- WHOLE FOODS
- SEPHORA
- FLEMING'S STEAKHOUSE
- BAREBOTTLE BREWING CO
- JOYRIDE PIZZA
- THE HALAL GUYS
- PACIFIC CATCH
- GENJI RAMEN
- CHIPOTLE
- LEE'S SANDWICHES
- STARBUCKS

### MISSION PARK MARKET

- TERIYAKI MADNESS
- BOICHKI BAGELS
- BAR SERENO
- ORANGETHEORY
- STARBUCKS
- MENDOCINO FARMS
- HABIT BURGER & GRILL



# BUILDING AVAILABILITIES

[CLICK TO VIEW FLOOR PLANS](#)

## UNDER 3,000 RSF

SPACE	SQ. FT.	AVAILABLE	
Suite 250	2,104	Immediate	<a href="#">CLICK TO VIEW FLOOR PLANS</a>
Suite 360	2,153	Immediate	<a href="#">CLICK TO VIEW FLOOR PLANS</a>
Suite 380	1,767	Immediate	<a href="#">CLICK TO VIEW FLOOR PLANS</a>
Suite 450	2,458	Immediate	<a href="#">CLICK TO VIEW FLOOR PLANS</a>
Suite 470	2,726	10/1/2026	<a href="#">CLICK TO VIEW FLOOR PLANS</a>
Suite 480	1,764	Immediate	<a href="#">CLICK TO VIEW FLOOR PLANS</a>

## 3,000 - 6,000 SF

SPACE	SQ. FT.	AVAILABLE	
Suite 300	3,053	Immediate	<a href="#">CLICK TO VIEW FLOOR PLANS</a>
Suite 390	3,416	Immediate	<a href="#">CLICK TO VIEW FLOOR PLANS</a>
Suite 490	3,700	7/1/2026	<a href="#">CLICK TO VIEW FLOOR PLANS</a>
Suite 525	5,734	Immediate	<a href="#">CLICK TO VIEW FLOOR PLANS</a>

## OVER 6,000 SF

SPACE	SQ. FT.	AVAILABLE	
Suite 550	6,562	Immediate	<a href="#">CLICK TO VIEW FLOOR PLANS</a>
Suite 600	20,737	Immediate	<a href="#">CLICK TO VIEW FLOOR PLANS</a>

### SEAN TOOMEY

+1 408 219 8858  
sean.toomey@jll.com  
RE Lic#: 01350215

### MARYJANE BENGIVENO

+1 408 856 5622  
maryjane.bengiveno@jll.com  
RE Lic#: 0220114

### TOSS VALLENTINE

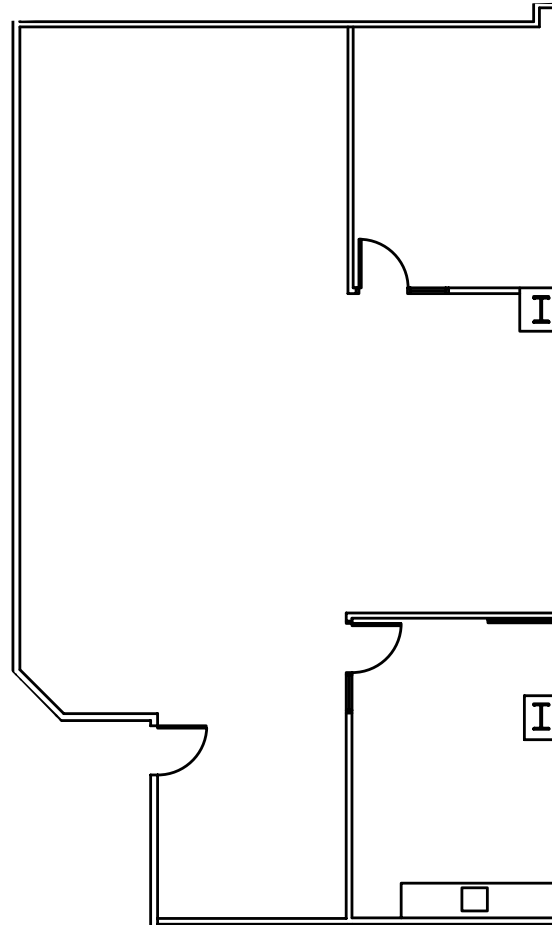
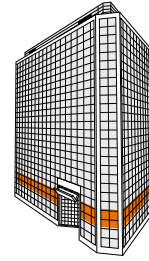
+1 650 213 2172  
toss.valentine@jll.com  
RE Lic#: 01742629



# SUITE 250

±2,104 SF | AVAILABLE NOW

- 1 Conference Room
- Break Room
- Open Area For Desks
- Market Ready



MISSION  
CITY CENTER

## SEAN TOOMEY

+1 408 219 8858  
sean.toomey@jll.com  
RE Lic#: 01350215

## MARYJANE BENGIVENO

+1 408 856 5622  
maryjane.bengiveno@jll.com  
RE Lic#: 0220114

## TOSS VALLENTINE

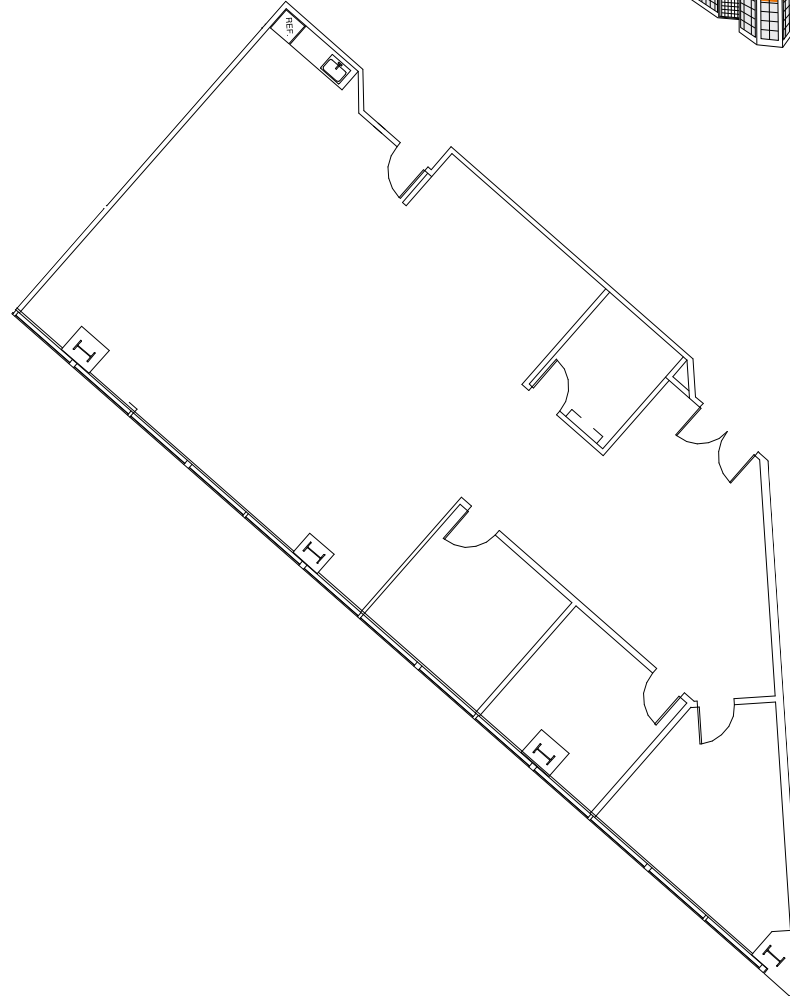
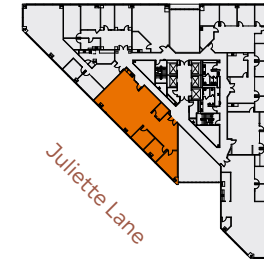
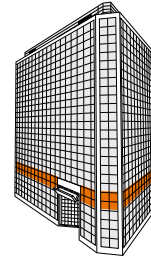
+1 650 213 2172  
toss.valentine@jll.com  
RE Lic#: 01742629



# SUITE 300

±3,053 SF | AVAILABLE NOW

- 1 Conference Room
- 2 Private Offices
- Kitchenette
- Open Area
- Market Ready



MISSION  
CITY CENTER

## SEAN TOOMEY

+1 408 219 8858  
sean.toomey@jll.com  
RE Lic#: 01350215

## MARYJANE BENGIVENO

+1 408 856 5622  
maryjane.bengiveno@jll.com  
RE Lic#: 0220114

## TOSS VALLENTINE

+1 650 213 2172  
toss.valentine@jll.com  
RE Lic#: 01742629



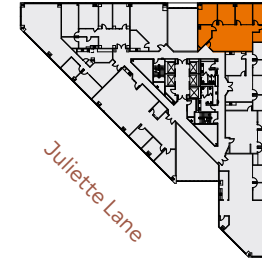
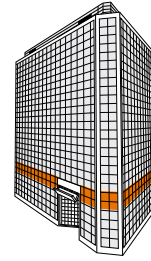
# SUITE 360

±2,153 SF | AVAILABLE NOW

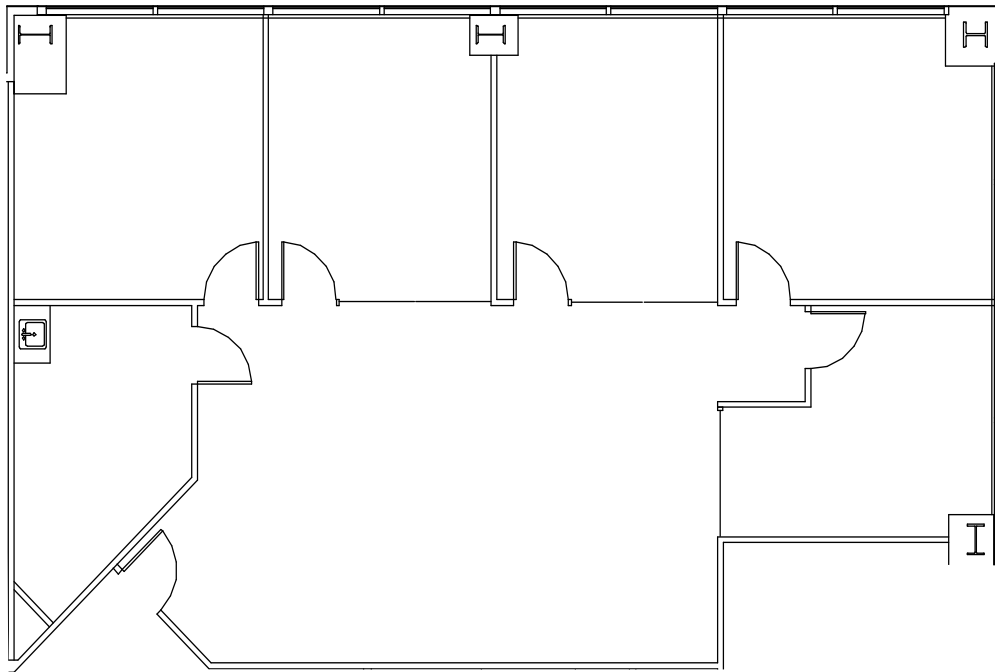
5 Private Offices

Breakroom/IT Room

Small Open Area For Desks



MISSION  
CITY CENTER



## SEAN TOOMEY

+1 408 219 8858  
sean.toomey@jll.com  
RE Lic#: 01350215

## MARYJANE BENGIVENO

+1 408 856 5622  
maryjane.bengiveno@jll.com  
RE Lic#: 0220114

## TOSS VALLENTINE

+1 650 213 2172  
toss.valentine@jll.com  
RE Lic#: 01742629



# SUITE 380

±1,767 SF | AVAILABLE NOW

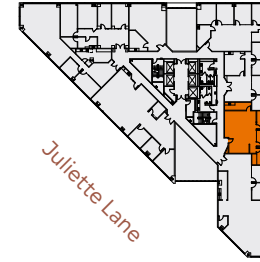
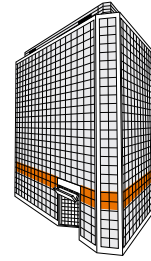
1 Conference Room

2 Private Offices

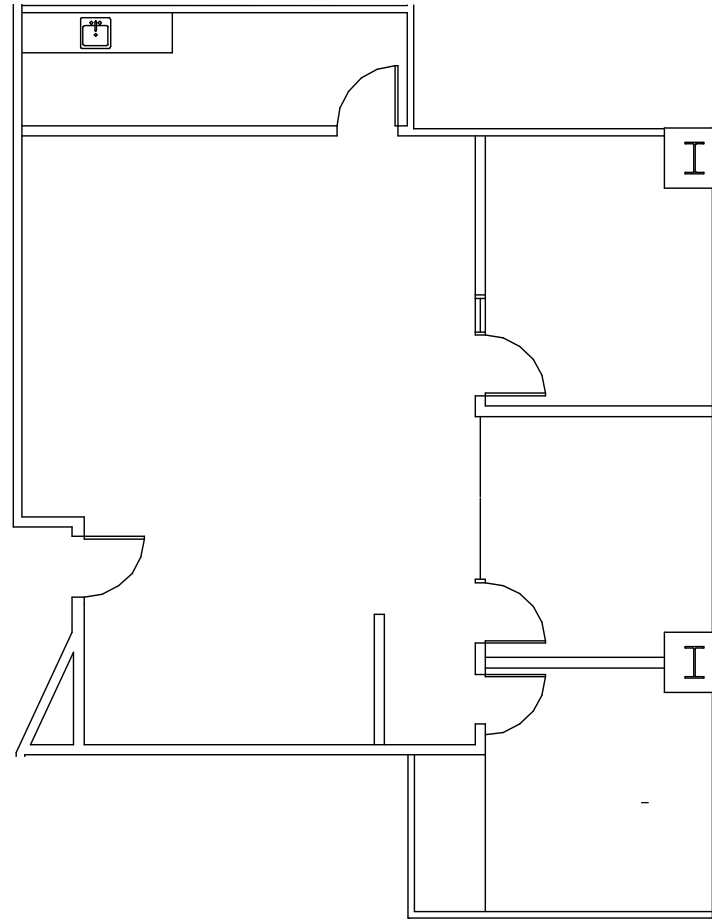
Break Room

Open Area For 4 Workstations

Market Ready



MISSION  
CITY CENTER



## SEAN TOOMEY

+1 408 219 8858  
sean.toomey@jll.com  
RE Lic#: 01350215

## MARYJANE BENGIVENO

+1 408 856 5622  
maryjane.bengiveno@jll.com  
RE Lic#: 0220114

## TOSS VALLENTINE

+1 650 213 2172  
toss.valentine@jll.com  
RE Lic#: 01742629



# SUITE 390

±3,416 SF | AVAILABLE NOW

1 Conference Room

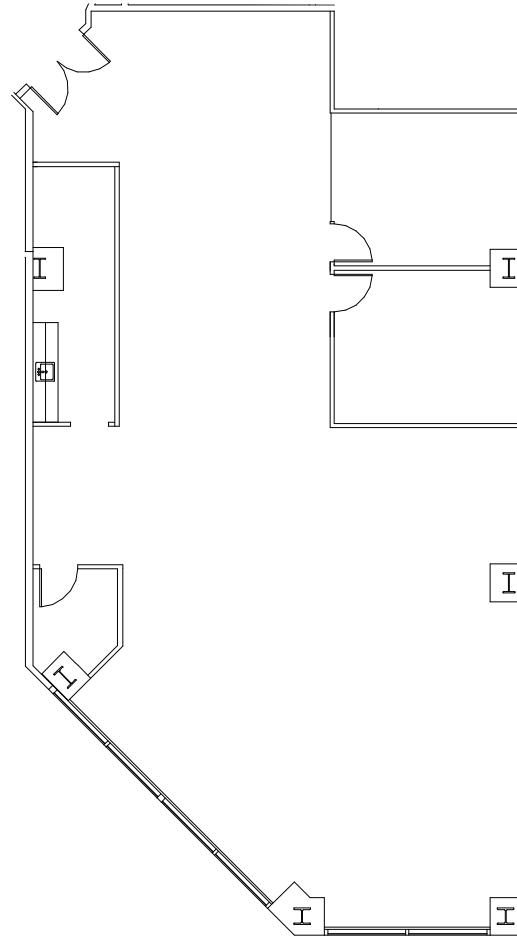
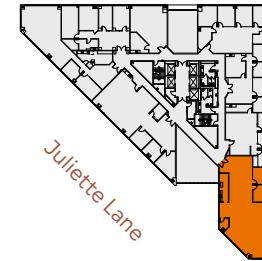
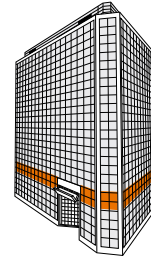
1 Private Office

Break Area

Telco/Storage Room

Open Area For Desks

Market Ready



MISSION  
CITY CENTER

## SEAN TOOMEY

+1 408 219 8858  
sean.toomey@jll.com  
RE Lic#: 01350215

## MARYJANE BENGIVENO

+1 408 856 5622  
maryjane.bengiveno@jll.com  
RE Lic#: 0220114

## TOSS VALLENTINE

+1 650 213 2172  
toss.valentine@jll.com  
RE Lic#: 01742629



# SUITE 450

±2,458 SF | AVAILABLE NOW

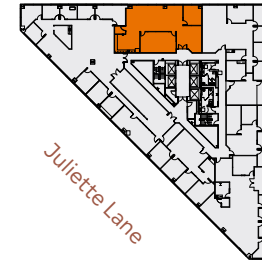
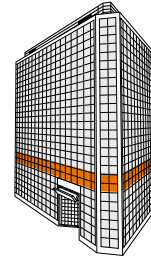
1 Conference Room

1 Private Office

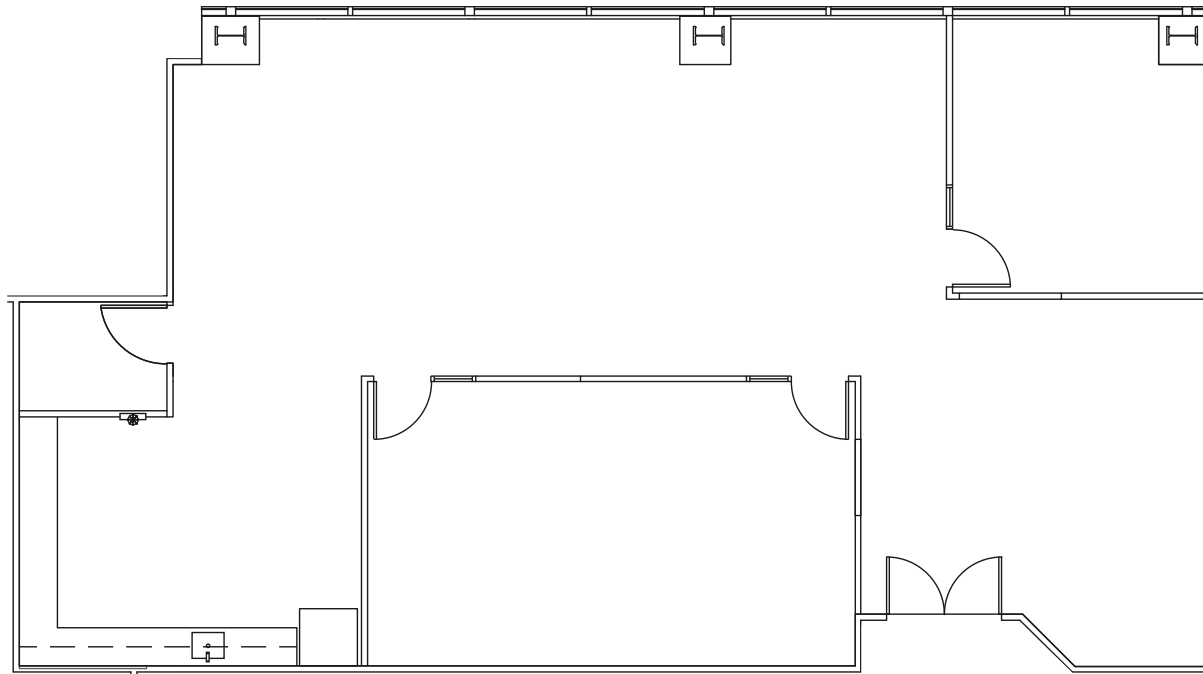
Open Upgraded Break Room

Open Area For Desks

Market Ready



MISSION  
CITY CENTER



## SEAN TOOMEY

+1 408 219 8858  
sean.toomey@jll.com  
RE Lic#: 01350215

## MARYJANE BENGIVENO

+1 408 856 5622  
maryjane.bengiveno@jll.com  
RE Lic#: 0220114

## TOSS VALLENTINE

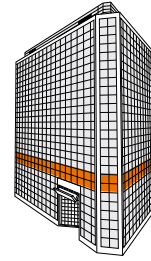
+1 650 213 2172  
toss.valentine@jll.com  
RE Lic#: 01742629



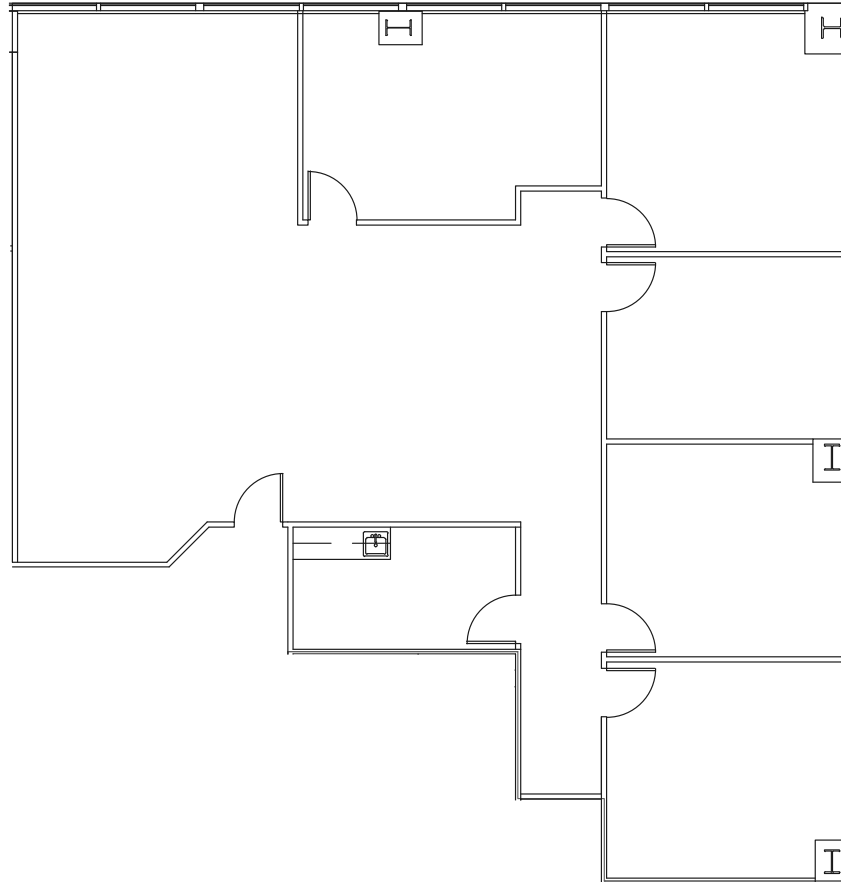
# SUITE 470

±2,726 SF | AVAILABLE 10/1/2026

- 1 Conference Room
- 4 Private Offices
- Break Room
- Open Area For Desks
- Market Ready



MISSION  
CITY CENTER



## SEAN TOOMEY

+1 408 219 8858  
sean.toomey@jll.com  
RE Lic#: 01350215

## MARYJANE BENGIVENO

+1 408 856 5622  
maryjane.bengiveno@jll.com  
RE Lic#: 0220114

## TOSS VALLENTINE

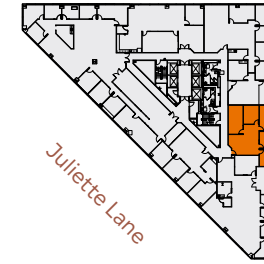
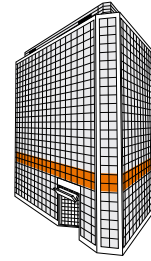
+1 650 213 2172  
toss.valentine@jll.com  
RE Lic#: 01742629



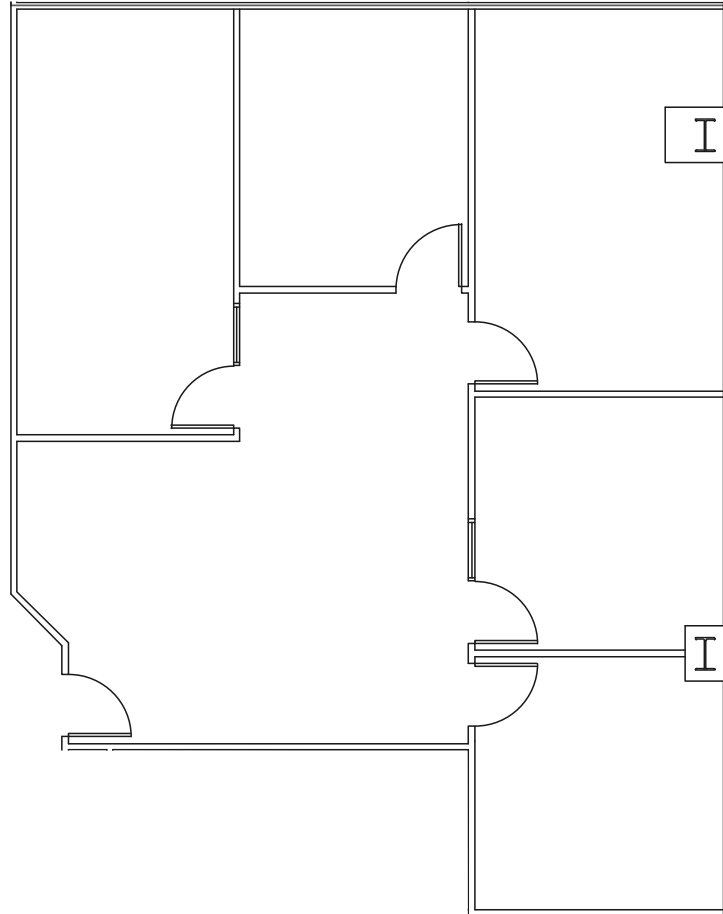
# SUITE 480

±1,764 SF | AVAILABLE NOW

- 1 Conference Room
- 4 Private Offices
- Reception
- Market Ready



MISSION  
CITY CENTER



## SEAN TOOMEY

+1 408 219 8858  
sean.toomey@jll.com  
RE Lic#: 01350215

## MARYJANE BENGIVENO

+1 408 856 5622  
maryjane.bengiveno@jll.com  
RE Lic#: 0220114

## TOSS VALLENTINE

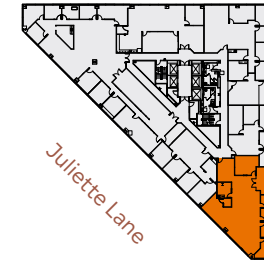
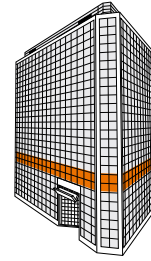
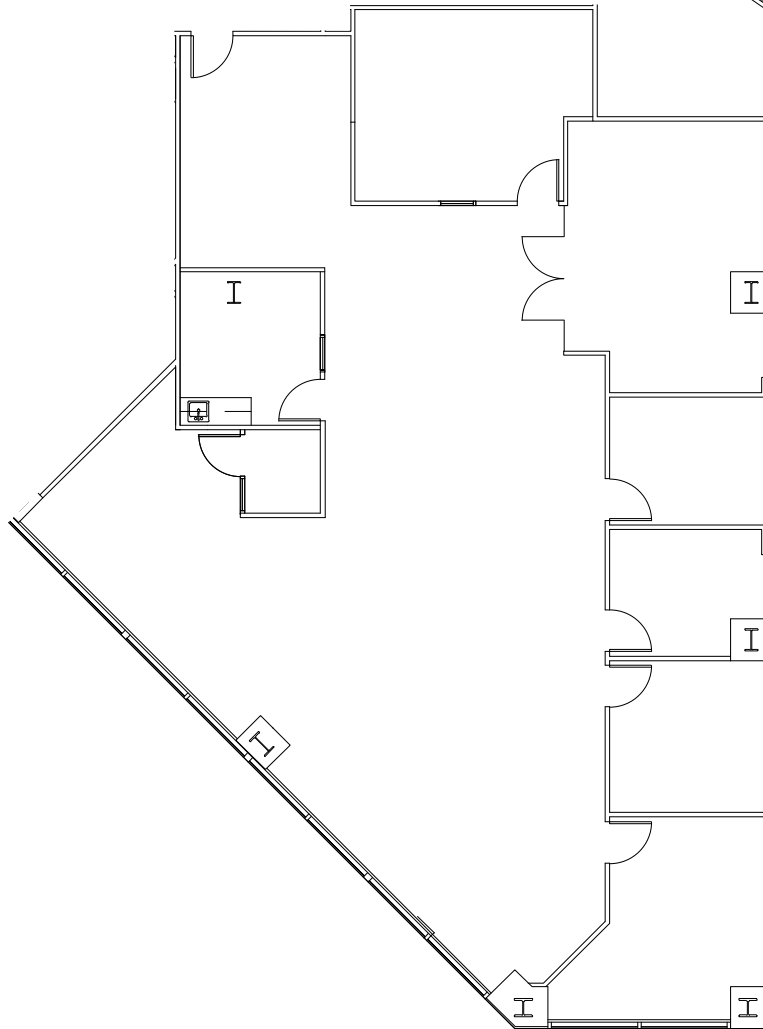
+1 650 213 2172  
toss.valentine@jll.com  
RE Lic#: 01742629



# SUITE 490

±3,700 SF | AVAILABLE 7/1/2026

- 5 Private Offices
- Conference Room
- Kitchen
- IT/Storage Room
- Open Area for Desks



MISSION  
CITY CENTER

## SEAN TOOMEY

+1 408 219 8858  
sean.toomey@jll.com  
RE Lic#: 01350215

## MARYJANE BENGIVENO

+1 408 856 5622  
maryjane.bengiveno@jll.com  
RE Lic#: 0220114

## TOSS VALLENTINE

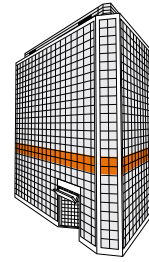
+1 650 213 2172  
toss.valentine@jll.com  
RE Lic#: 01742629



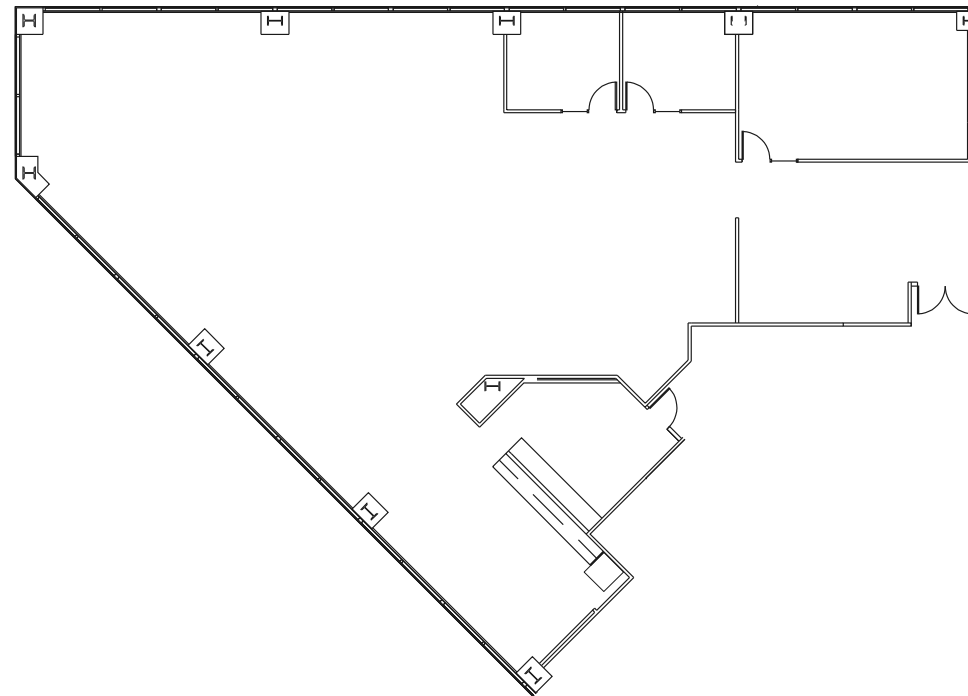
# SUITE 525

±5,734 SF | AVAILABLE NOW

- Large Conference Room
- 2 Private Offices
- IT/Storage Area
- Open Break Room With Views
- Open Area For Desks
- Market Ready



MISSION  
CITY CENTER



## SEAN TOOMEY

+1 408 219 8858  
sean.toomey@jll.com  
RE Lic#: 01350215

## MARYJANE BENGIVENO

+1 408 856 5622  
maryjane.bengiveno@jll.com  
RE Lic#: 0220114

## TOSS VALLENTINE

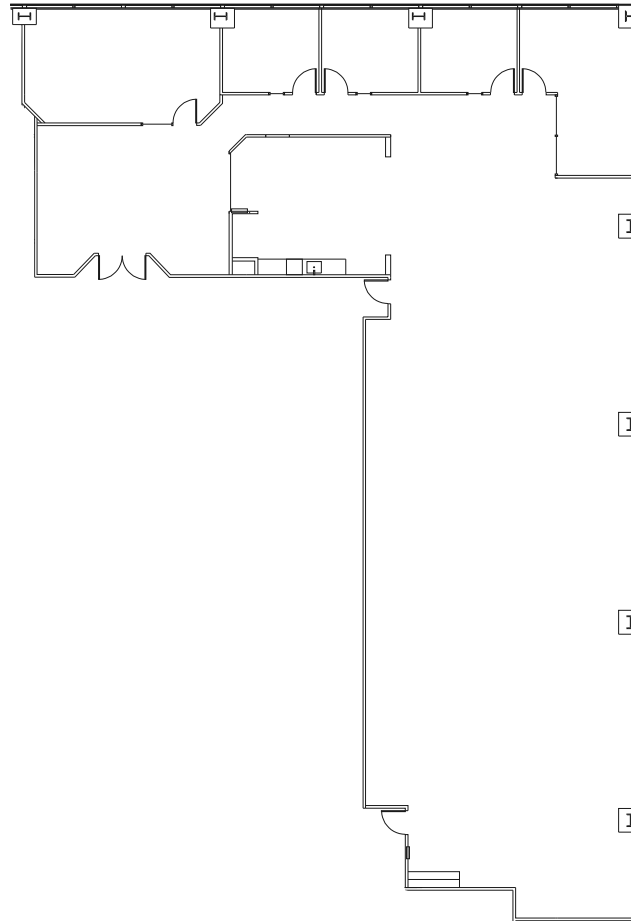
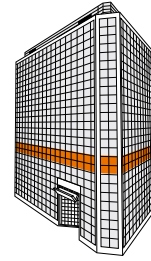
+1 650 213 2172  
toss.valentine@jll.com  
RE Lic#: 01742629



# SUITE 550

±6,562 SF | AVAILABLE NOW

- 1 Large Conference Room
- 1 Small Conference Room
- 3 Private Offices
- Break Room
- Open Area For Desks
- Market Ready



MISSION  
CITY CENTER

## SEAN TOOMEY

+1 408 219 8858  
sean.toomey@jll.com  
RE Lic#: 01350215

## MARYJANE BENGIVENO

+1 408 856 5622  
maryjane.bengiveno@jll.com  
RE Lic#: 0220114

## TOSS VALLENTINE

+1 650 213 2172  
toss.valentine@jll.com  
RE Lic#: 01742629



# SUITE 600

±20,737 SF | AVAILABLE NOW

Full Floor Suite

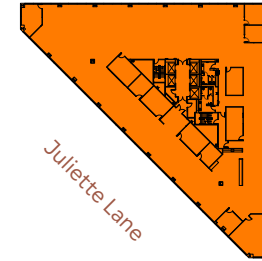
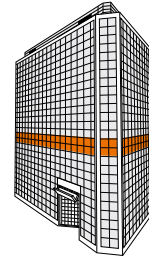
Ensuite Restrooms

1 Large Conference Room

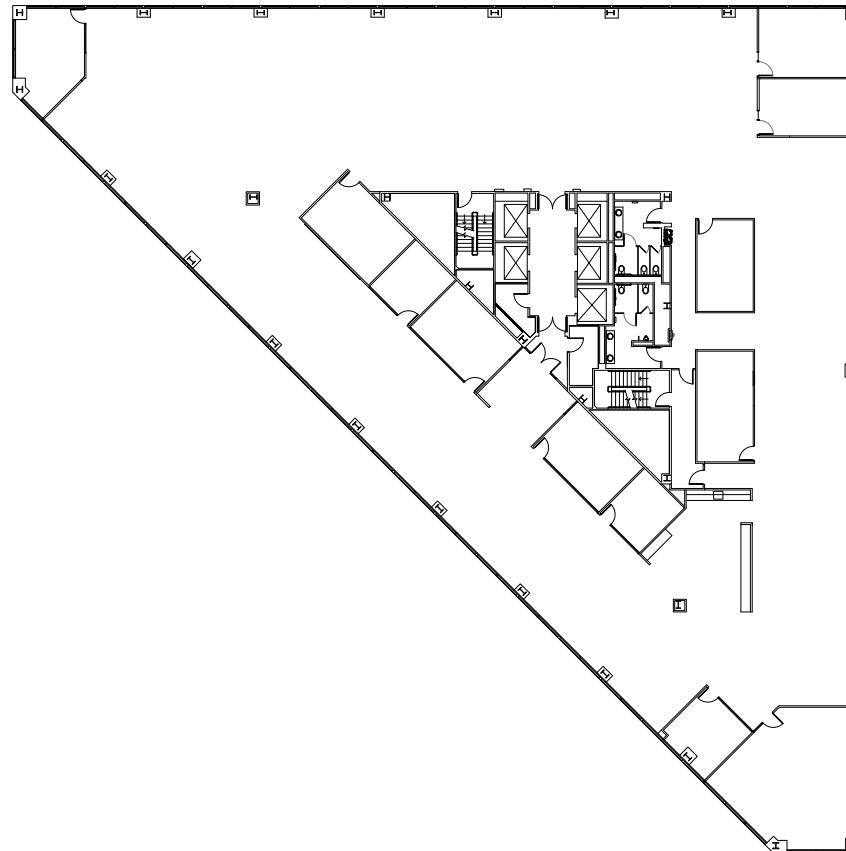
6 Smaller Meeting Rooms

3 Private Offices

Large Break Room



Juliette Lane



MISSION  
CITY CENTER

## SEAN TOOMEY

+1 408 219 8858  
sean.toomey@jll.com  
RE Lic#: 01350215

## MARYJANE BENGIVENO

+1 408 856 5622  
maryjane.bengiveno@jll.com  
RE Lic#: 0220114

## TOSS VALLENTINE

+1 650 213 2172  
toss.valentine@jll.com  
RE Lic#: 01742629



# MISSION CITY CENTER

## SEAN TOOMEY

+1 408 219 8858  
sean.toomey@jll.com  
RE Lic#: 01350215

## MARYJANE BENGIVENO

+1 408 856 5622  
maryjane.bengiveno@jll.com  
RE Lic#: 0220114

## TOSS VALLENTINE

+1 650 213 2172  
toss.vallentine@jll.com  
RE Lic#: 01742629



**EMBARCADERO**  
CAPITAL PARTNERS

Although information has been obtained from sources deemed reliable, neither Owner nor JLL makes any guarantees, warranties or representations, express or implied, as to the completeness or accuracy as to the information contained herein. Any projections, opinions, assumptions or estimates used are for example only. There may be differences between projected and actual results, and those differences may be material. The Property may be withdrawn without notice. Neither Owner nor JLL accepts any liability for any loss or damage suffered by any party resulting from reliance on this information. If the recipient of this information has signed a confidentiality agreement regarding this matter, this information is subject to the terms of that agreement. ©2026 Jones Lang LaSalle IP, Inc. All rights reserved.