

For sublease

15950 W Dodge Rd.
Omaha, Nebraska 68118

23,898 RSF



Property specifications

Availability: Suite 400 | 23,898 SF

Lease rate: Negotiable

Sublease expiration: April 30th, 2030

Building size: 92,148 SF

- 3-story office building located near numerous restaurants and retailers
- Surface parking & garage parking with key card access
- Suite includes 31 private offices, 29 work stations, 4 meeting rooms, 1 conference room, break areas, and private reception

Contact broker for
additional information

jll.com/des-moines

Jones Lang LaSalle Brokerage, Inc.

Tanner Borchardt

Senior Vice President

+1 308 529 3861

tanner.borchardt@jll.com

Eric Rose

Managing Director

+1 406 855 0635

eric.rose@jll.com

Anousone Souvannasoth

Associate

+1 402 617 2240

a.souvannasoth@jll.com

Images



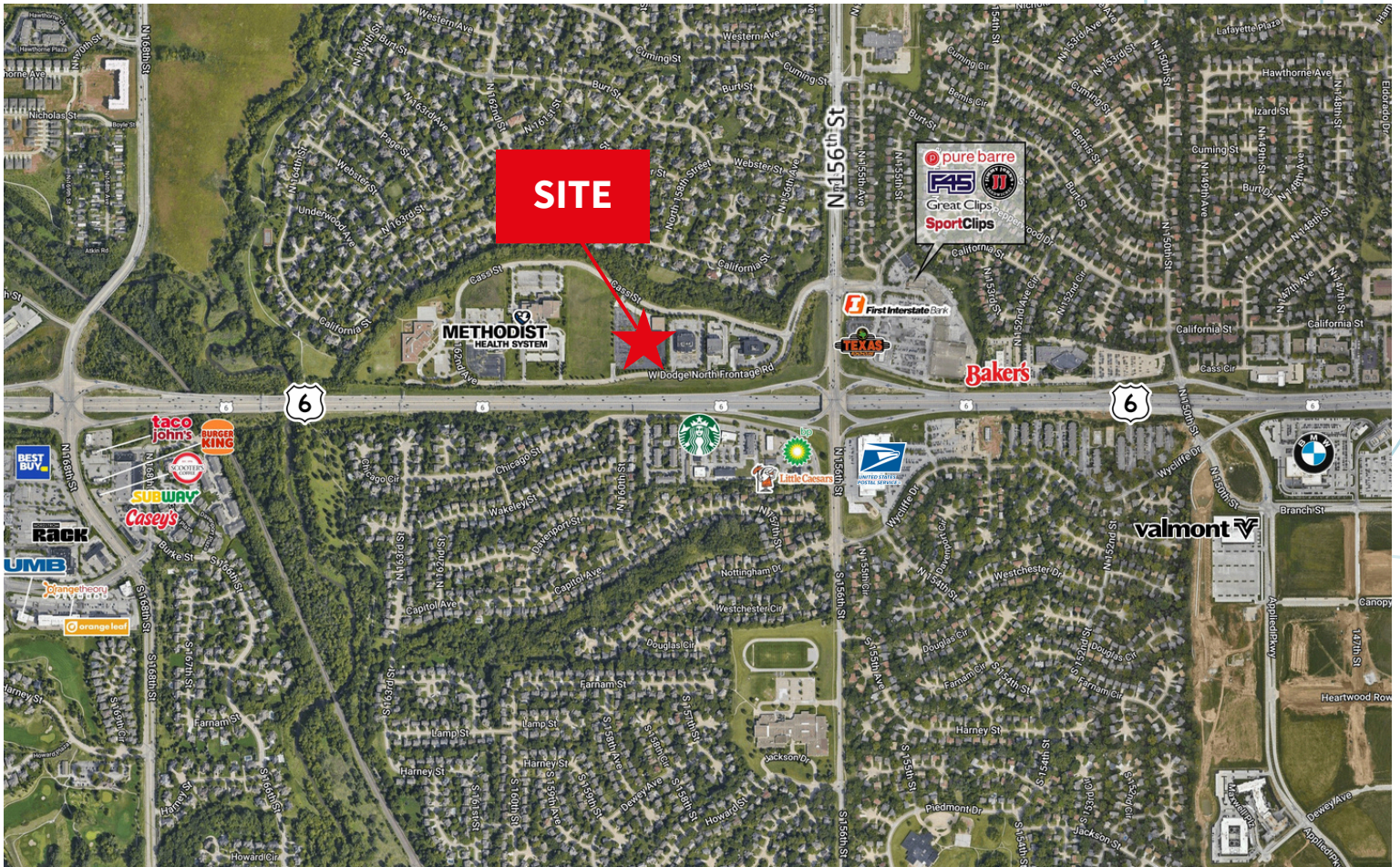
Floor plan



- Private Offices
- Meeting Rooms/Conference Rooms
- Reception
- Common Areas/Bathrooms
- Workstations/Open Seating
- Support Areas
- Kitchen/Break Room

For sublease

15950 W Dodge Rd. | Omaha, Nebraska 68118



Contact broker for
additional information

Tanner Borchardt
Senior Vice President
+1 308 529 3861
tanner.borchardt@jll.com

Eric Rose
Managing Director
+1 406 855 0635
eric.rose@jll.com

Anousone Souvannasoth
Associate
+1 402 617 2240
a.souvannasoth@jll.com