

2460 GEORGE WASHINGTON MEMORIAL HWY
HAYES, VA 23072

**FOR LEASE
& SALE**




LOCATION DESCRIPTION

Freestanding building located at the signalized intersection of George Washington Memorial Highway and Lafayette Heights Drive in Hayes, Virginia

PROPERTY HIGHLIGHTS

- 13,813 SF building available for lease and 2.7 acres available for sale
- Opportunity for potential redevelopment
- Ideal location for bank branch, restaurant, convenience store, and many other retail uses
- Half mile from the Coleman Bridge and close to York County and Newport News
- Traffic Count (ADT): George Washington Memorial Highway - 33,000



 DEMOGRAPHICS	1 MILE	3 MILES	5 MILES
Population	2,278	11,896	19,196
Households	1,060	4,984	7,634
Average HH Income	\$77,749	\$95,380	\$98,856
Median HH Income	\$62,618	\$70,511	\$75,444



DEBRA RAMEY

debra.ramey@tscg.com
757.586.4102

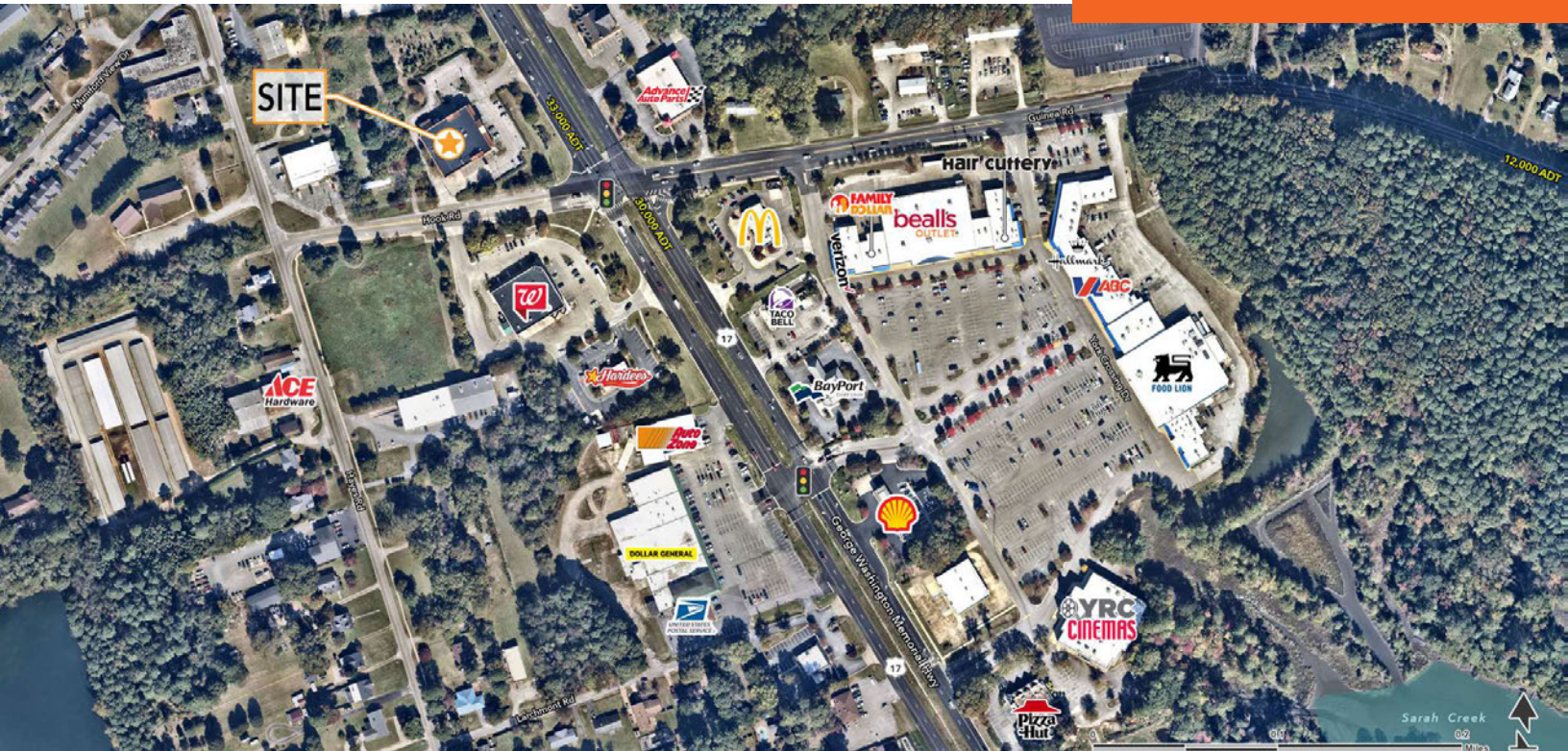
KAREN MIKULSKI

karen.mikulski@tscg.com
757.586.4104

REALTY  INCOME

2460 GEORGE WASHINGTON MEMORIAL HWY
HAYES, VA 23072

**FOR SALE
& LEASE**



DEBRA RAMEY
debra.ramey@tscg.com
757.586.4102

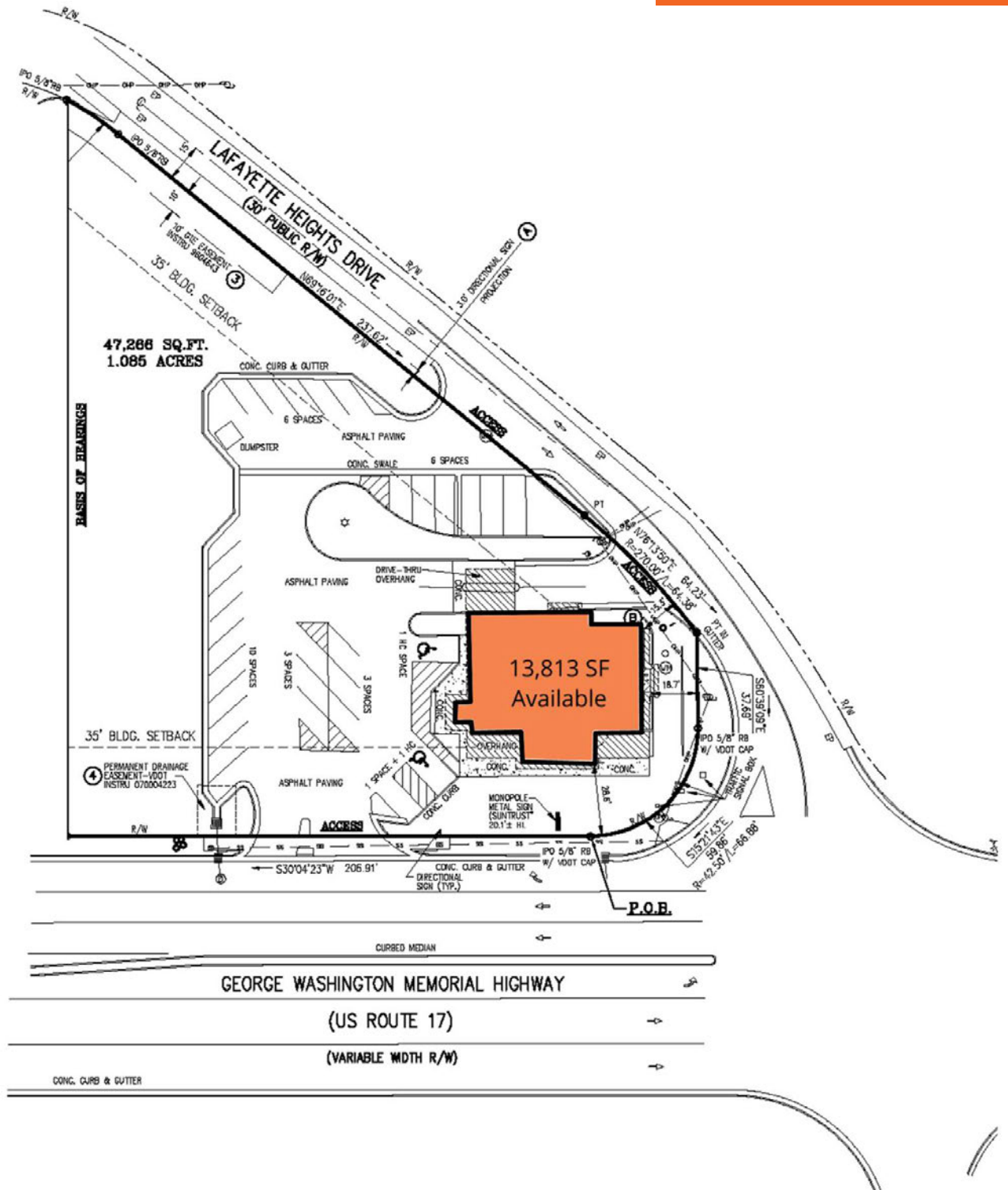
KAREN MIKULSKI
karen.mikulski@tscg.com
757.586.4104

REALTY  INCOME

2460 GEORGE WASHINGTON MEMORIAL HWY

HAYES, VA 23072

FOR LEASE & SALE



DEBRA RAMEY
debra.ramey@tscg.com
757.586.4102

KAREN MIKULSKI
karen.mikulski@tscg.com
757.586.4104

REALTY  INCOME