



Building owned and managed by
HEALTHCARE REALTY



**7901
DILEY
ROAD**



Medical Office Space for Lease

Welcome to 7901 DILEY ROAD



45,209 SF



2 floors



Connected to 7911 Diley Road's emergency room, lab, imaging, & women's health center



Proximal to US-33



Convenient location for Fairfield County residents



238 surface spaces



Professional management and architectural space planning



Market leading TI packages



7901 Diley Road
Building owned and managed by
HEALTHCARE REALTY

Leasing Information:
Andy Dutcher
+1 614 460 4403
andrewdutcher@jll.com

Joey Lamb
+1 614 460 4412
joeylamb@jll.com



Location Overview

GROCERY

- 1. Kroger
- 2. Walmart
- 3. Meijer

LODGING

- 24. Hampton Inn
- 25. Best Western Canal Winchester Inn
- 26. BrewDog DogHouse

DINING

- 4. Scramblers
- 5. Bob Evans
- 6. Skyline Chill
- 7. Buffalo Wild Wings
- 8. Starbucks
- 9. Las Margaritas
- 10. Panera Bread
- 11. Sweet Harmony Canal
- 12. Joe Vino
- 13. Loose Rail Brewing
- 14. Local Cantina Canal Winchester
- 15. Harvest Moon Craft Kitchen
- 16. Canal Wigwam
- 17. Shade
- 18. Chipotle
- 19. McDonald's
- 20. Taco Bell
- 21. Whit's Frozen Custard
- 22. Kingy's Pizza pub
- 23. The Ugly Mug Bar & Grill



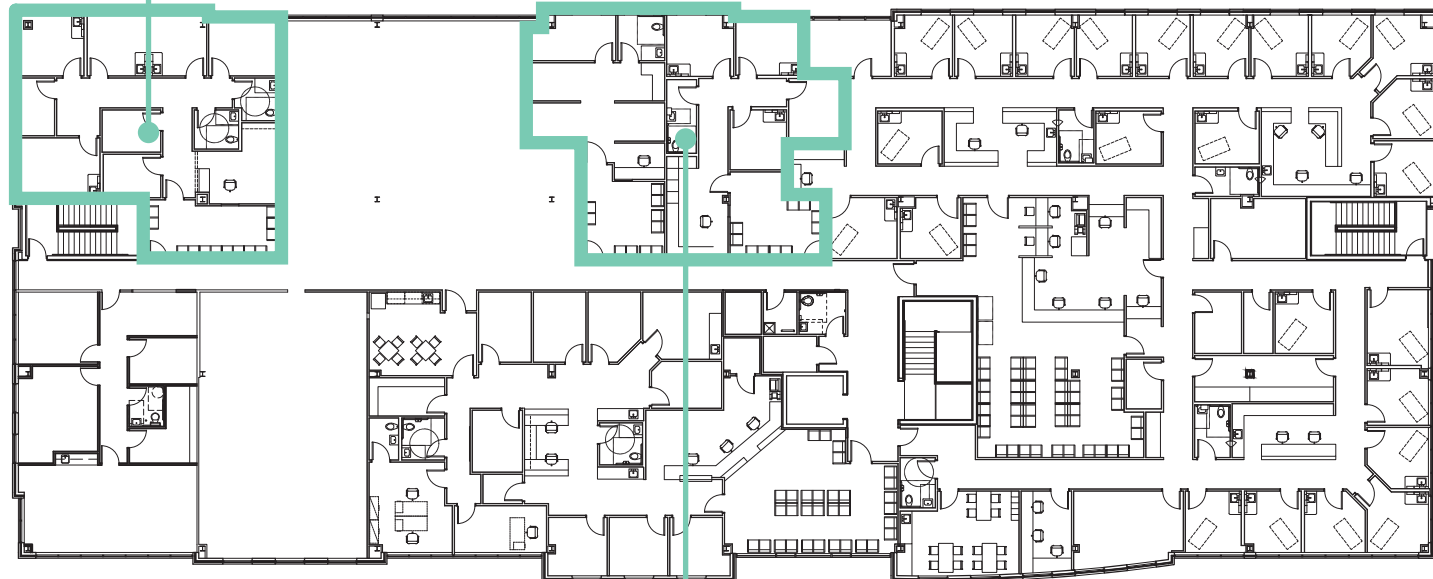
7901 Diley Road
 Building owned and managed by
HEALTHCARE REALTY

Leasing Information:
 Andy Dutcher
 +1 614 460 4403
 andrew.dutcher@jll.com

Joey Lamb
 +1 614 460 4412
 joeylamb@jll.com

Second Floor

Suite 240
1,897 SF
Available 3/1/2027



Suite 205
2,347 SF
Available 4/1/2027





**7901
DILEY
ROAD**

Andy Dutcher

D + 1 614 460 4403

M + 1 614 425 2959

andrew.dutcher@jll.com

Joey Lamb

D + 1 614 460 4412

M + 1 614 506 9147

joey.lamb@jll.com



JLL

Building owned and managed by
HEALTHCARE REALTY

Although information has been obtained from sources deemed reliable, JLL does not make any guarantees, warranties or representations, express or implied, as to the completeness or accuracy as to the information contained herein. Any projections, opinions, assumptions or estimates used are for example only. There may be differences between projected and actual results, and those differences may be material. JLL does not accept any liability for any loss or damage suffered by any party resulting from reliance on this information. If the recipient of this information has signed a confidentiality agreement with JLL regarding this matter, this information is subject to the terms of that agreement. ©2026 Jones Lang LaSalle Brokerage, Inc. All rights reserved.