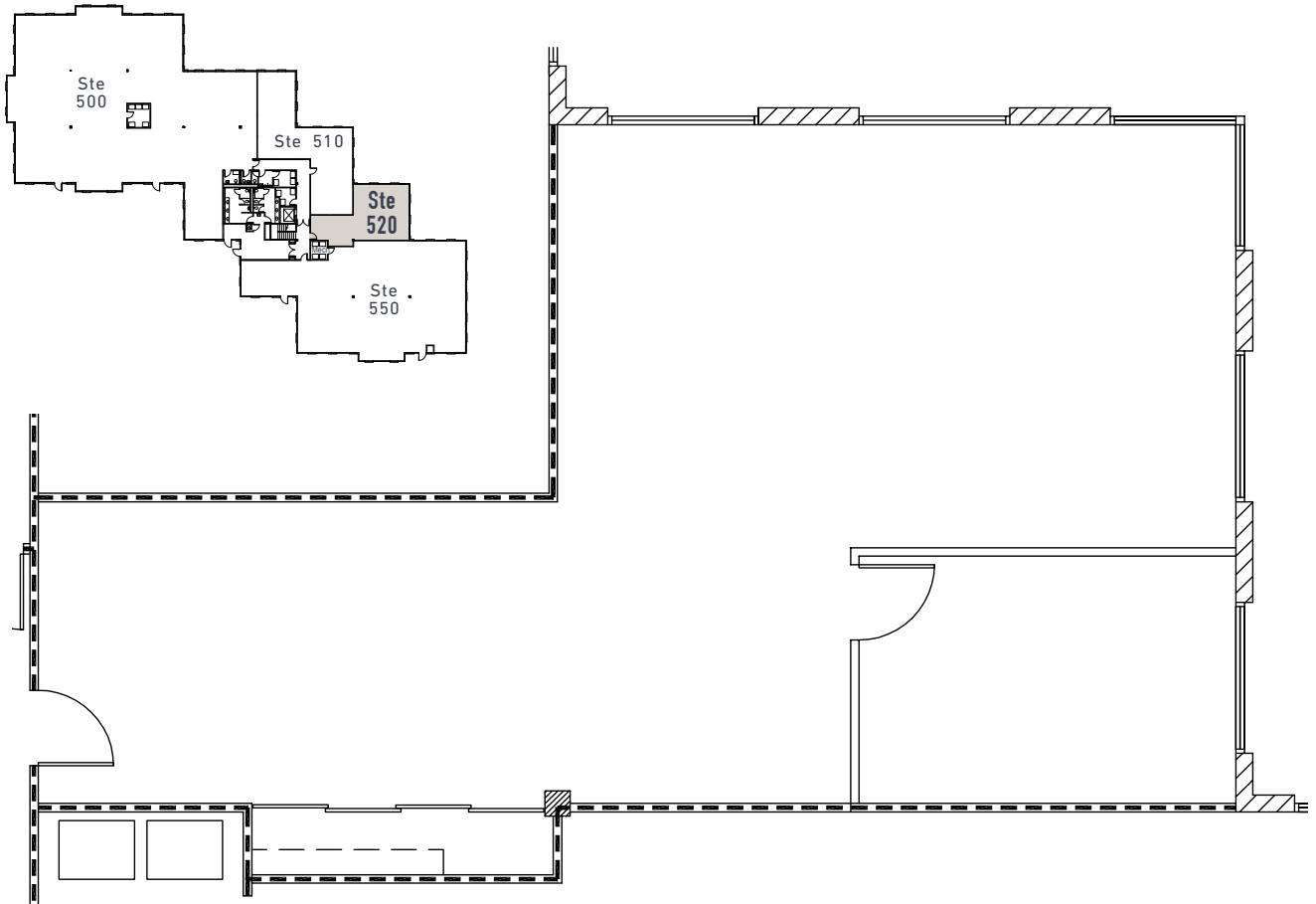




# QUAIL RIDGE OFFICE CENTRE

500-640 Quail Ridge Drive  
Westmont, IL

Building C - 2nd Floor  
Suite 520 / 1,175 RSF



## CONTACT

**JIM ADLER**  
630 691 0605  
jadler@hiffman.com

**DAN O'NEILL**  
630 691 0610  
doneill@hiffman.com

**COURTNEY SWEISS**  
630 317 0748  
csweiss@hiffman.com

GROUP RMC

**NAIHiffman**  
Commercial Real Estate Services, Worldwide