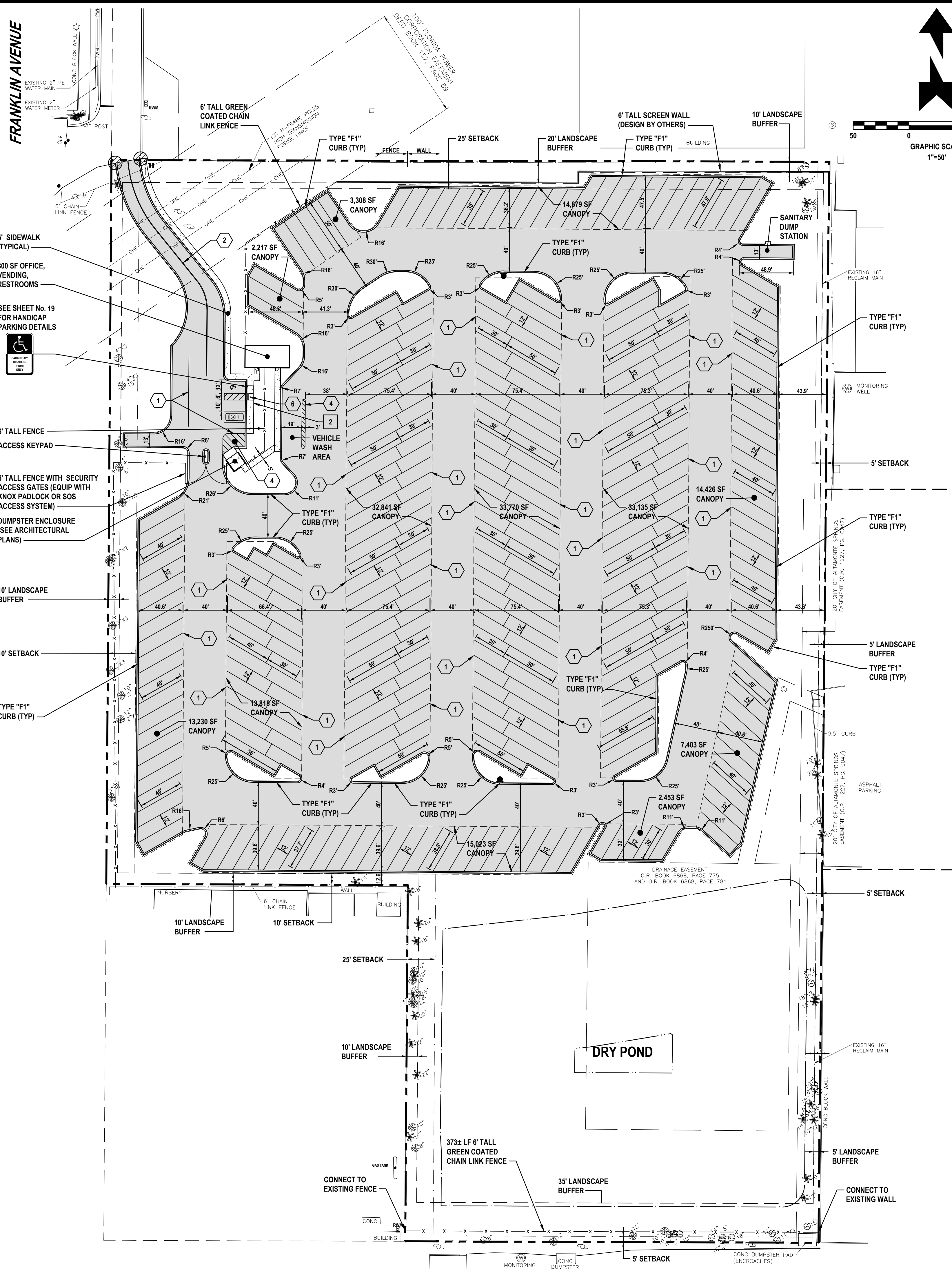


FRANKLIN AVENUE



**PAVEMENT MARKING NOTES:**

1. PAINTED PAVEMENT MARKINGS SHALL BE APPLIED AFTER PAVEMENT SURFACE HAS CURED. SURFACE SHALL BE FREE OF FINE SAND AND DEBRIS PRIOR TO APPLICATIONS.
2. APPLY PAINTED PAVEMENT MARKINGS AT LAST STAGE OF CONSTRUCTION AFTER LANDSCAPE PLANTINGS ARE INSTALLED.
3. PAINT SHALL BE SHERWIN WILLIAMS LOW-VOC ACRYLIC PRO PARK PAINT, APPLY PER MANUFACTURER'S RECOMMENDATIONS. REFER TO DRAWINGS FOR LOCATIONS OF SPECIFIC COLORS.
4. ALL STOP BARS SHALL BE THERMOPLASTIC.
5. ALL REFLECTIVE PAVEMENT MARKERS ARE TO BE PLACED IN ACCORDANCE WITH FDOT STANDARD INDEX NO. 17352.
6. ALL SIGNS SHALL BE PLACED IN ACCORDANCE WITH INDEX NO. 17301 AND THE "MANUAL ON UNIFORM TRAFFIC CONTROL DEVICES FOR STREETS AND HIGHWAYS".
7. LOCATION OF SIGNS IS APPROXIMATE ONLY AND IS SUBJECT TO CHANGE AS DIRECTED BY THE ENGINEER.
8. FOR ADDITIONAL DETAILS SEE INDEX NO. 11860, 11863, 17302, 17344 AND 17346.
9. ALL TRAFFIC CONTROL SIGNS SHALL BE FABRICATED USING 3M BRAND "SCOTCHLITE" SHEETING (ENGINEER GRADE) ON MINIMUM .08 GA ALUMINUM BLANKS. ALL 36"x48" SIGNS SHALL BE .100 GA MINIMUM AND SHALL BE INSTALLED USING 3"x12" ROUND ALUMINUM POST. ALL STOP SIGNS SHALL BE 36" OCTAGON INSTALLED ON 12.3 LBS/FT "U" CHANNEL POST RAIL STEEL ONLY OR 3"x12" ROUND ALUMINUM POSTS. "U" CHANNEL POSTS MAY BE USED FOR SIGNS SMALLER THAN 36"x36". ALL SPEED LIMIT SIGNS SHALL BE 24"x30".
9. ALL STRIPING IN THE RIGHT OF WAY MUST BE INSTALLED IN ACCORDANCE WITH FDOT INDEX #711-001.

**CURB RAMP LEGEND:**

- 1 SIDEWALK CURB RAMP (CR-E) WITH 24" DETECTABLE WARNING MAT PER FDOT INDEX 522-002
  - 2 SIDEWALK CURB RAMP (CR-C) WITH 24" DETECTABLE WARNING MAT PER FDOT INDEX 522-002
- SEE SHEET No. 13 FOR RAMP DETAILS

**STRIPING KEYNOTES:**

- (PER FDOT INDEX No. 711-001, ONLY THERMOPLASTIC IN RW)
- 1 6" SOLID WHITE LINE
  - 2 6" SOLID DOUBLE YELLOW LINE
  - 3 24" WHITE STOP BAR
  - 4 6" WHITE LINE @ 45" SPACED 4' ON CENTER
  - 5 WHITE DIRECTIONAL ARROW
  - 6 24" DETECTABLE WARNING MAT

**LEGEND**

- TYPE "F1" CURB
- TYPE "F1" CURB TRANSITION TO FLUSH
- 24" DETECTABLE WARNING MAT

**GENERAL NOTES:**

1. CITY OF ALTAMONTE SPRINGS BUILDING PERMITS ARE REQUIRED FOR BUILDING, DUMPSTER ENCLOSURE, LIGHT POLES, FENCE AND MONUMENT SIGN. CONTRACTOR SHALL BE RESPONSIBLE FOR SUBMITTING APPROPRIATE INFORMATION (ENGINEERING, SPECIFICATIONS, SHOP DRAWINGS, ETC.).
2. ALL DIMENSIONS AND TIES ARE TO THE EDGE OF PAVEMENT AND OUTSIDE FACE OF BUILDING.
3. ALL IMPROVEMENTS SHALL BE STAKED FOR CONSTRUCTION BY MEANS OF DIGITAL COORDINATES BY SURVEYOR UTILIZING GEODEIC TOTAL STATION OR GPS. SCALING OF DRAWINGS FOR PURPOSES OF STAKING ARE AT THE SURVEYOR'S RISK.
4. THE CONTRACTOR SHALL COORDINATE WITH THE EXISTING ADJACENT BUSINESSES TO ENSURE THERE IS NO DISRUPTION TO THEIR RESPECTIVE OPERATIONS.
5. THE CONTRACTOR AT ITS OWN DISCRETION SHALL MAINTAIN THE CONSTRUCTION SITE SECURE FROM TRESPASS.
6. SOD ALL DISTURBED AREAS IN RIGHT-OF-WAY WITH BAHIA SOD.
7. ALL CURB RAMPS SHALL COMPLY WITH SECTION 406 OF FLORIDA ACCESSIBILITY CODE FOR BUILDING CONSTRUCTION (FACBC).

**PAVING LEGEND**

- REINFORCED ASPHALT PAVEMENT
    - 2" SP-9.5 (TL-C) WITH TACK COAT PER FDOT SPECIFICATIONS
    - 6" CRUSHED CONCRETE (LBR=130) MIN OF 98% MODIFIED PROCTOR MAX DENSITY PER AASHTO T-100 (4" MAX. LIFTS)
    - 8" STABILIZED SUBBASE (BR 40) MIN OF 98% MODIFIED PROCTOR MAX DENSITY PER AASHTO T-100 (TYPE B STABILIZATION) (SEE REINFORCED PAVEMENT DETAIL, SHEET No. 19)
  - CONCRETE PAVEMENT
    - 6" CONCRETE (4,000 P.S.I. @ 28 DAYS)
    - 12" STABILIZED SUBGRADE (LBR 40) MIN OF 98% MODIFIED PROCTOR MAX DRY DENSITY PER ASTM D1557, AASHTO T-100 (6" LIFTS) SEE CITY DETAIL R-14, SHEET No. 15
  - CONCRETE SIDEWALK
    - 4" THICK CONCRETE (3,000 P.S.I. @ 28 DAYS), CLASS I, APPROVED FDOT DESIGN MIX (FDOT INDEX No. 522-001) No. 4 REBAR REQUIRED. SEE CITY DETAILS M-6, M-6.1 & M-7, SHEET No. 15
- NOTE: SHELL-ROCK BASE AND SOIL-CEMENT BASE IS ONLY ALLOWED WITH APPROVAL OF THE CITY ENGINEER. ALL MATERIALS, PRODUCTION, TRANSPORTATION, PLACEMENT AND CONSTRUCTION METHODS SHALL BE CONSISTENT WITH FDOT DESIGN STANDARD SPECIFICATIONS FOR ROAD AND BRIDGE CONSTRUCTION IN EFFECT AT THE START OF CONSTRUCTION ACTIVITY. ALL TESTING, INSPECTIONS AND VERIFICATIONS SHALL BE PERFORMED CONSISTENT WITH FDOT QUALITY CONTROL CRITERIA IN EFFECT AT THE START OF CONSTRUCTION ACTIVITY.

**REVISIONS**

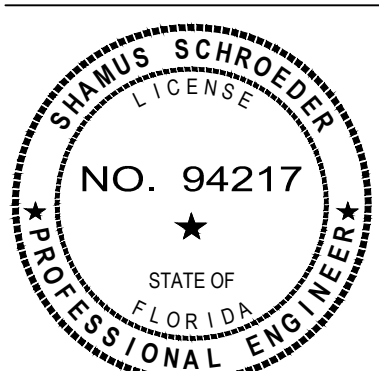
DATE	DESCRIPTION
2/10/25	CITY COMMENTS

1230 North US1, Suite 3  
Ormond Beach, Florida 32174  
Phone (386) 872-7794  
www.NewKirk-Engineering.com  
C.A. # 30209  
L.C. # 2600584  
© 2013  
Civil Engineering, Transportation, CEI & Landscape Architecture  
**NEWKIRK ENGINEERING INC.**

**SITE LAYOUT PLAN**  
**ALTAMONTE BOAT AND RV STORAGE**  
W. FRANKLIN AVE., ALTAMONTE SPRINGS, FL 32714

THIS DRAWING IS THE PROPERTY OF NEWKIRK ENGINEERING ANY USE OR REPRODUCTION IN WHOLE OR PART IS PROHIBITED WITHOUT THE EXPRESSED WRITTEN CONSENT OF NEWKIRK ENGINEERING. COPYRIGHT © 2013 ALL RIGHTS RESERVED.

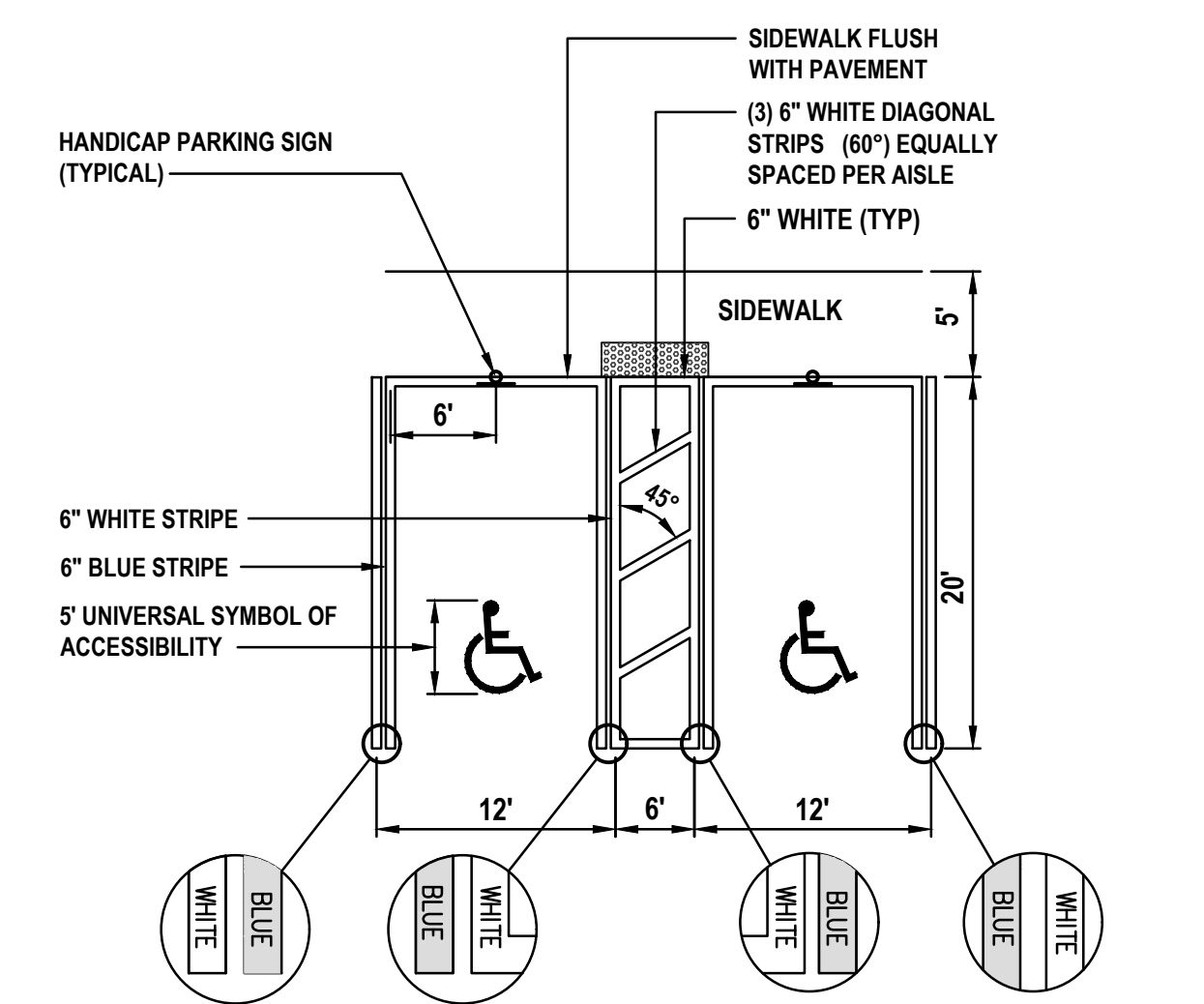
THIS ITEM HAS BEEN DIGITALLY SIGNED AND SEALED BY SHAMUS SCHROEDER, PE # 94217 ON



PRINTED COPIES OF THIS DOCUMENT ARE NOT CONSIDERED SIGNED AND SEALED AND THE SIGNATURE MUST BE VERIFIED ON ANY ELECTRONIC COPIES.

PROJECT No: 2024-59  
DATE: NOVEMBER 2024  
DESIGN BY: STS  
DRAWN BY: DAB  
CHECKED BY: HHN  
SCALE: 1" = 50'  
DRAWING NUMBER

**06**



**ACCESSIBLE PARKING STRIPING** (UNIVERSAL SPACES PER FLORIDA ADA)  
SCALE: 1" = 10'