

The Village at Crosswinds

3482 Crosswinds Road, Phenix City, AL 36869

The Village at Crosswinds is a 22-acre retail development anchored by Renfro's Market, a full-service grocery store. The grocer is supplemented with 25,000 SF of strip retail. Located off scenic Highway 431 across from Chattahoochee Community College Campus and Grand Reserve Apartments and adjacent to Hwy 165, the site has excellent visibility and easy access. The Village at Crosswinds is in a densely populated trade area near the intersection of US Hwy 431 and Hwy 165, benefiting from the strong road network and low competitive environment.

- + Priority target area for Phenix City
- + Vehicles per day:
 - 35,297 at US Hwy 431
 - 34,960 at US Hwy 431 and US Hwy 280
- + 55 Surface spaces
- + Large Military Population from Fort Benning, GA
- + Main seasonal artery to Panama City and Destin, Florida, from the Atlanta area
- + New Traffic Signal Light at the entrance to The Village at Crosswinds and Hwy 431



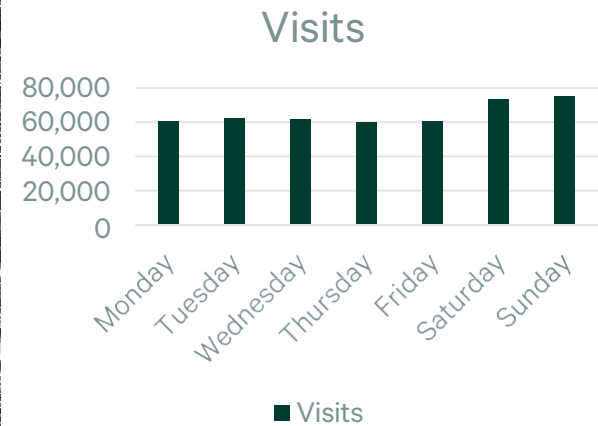
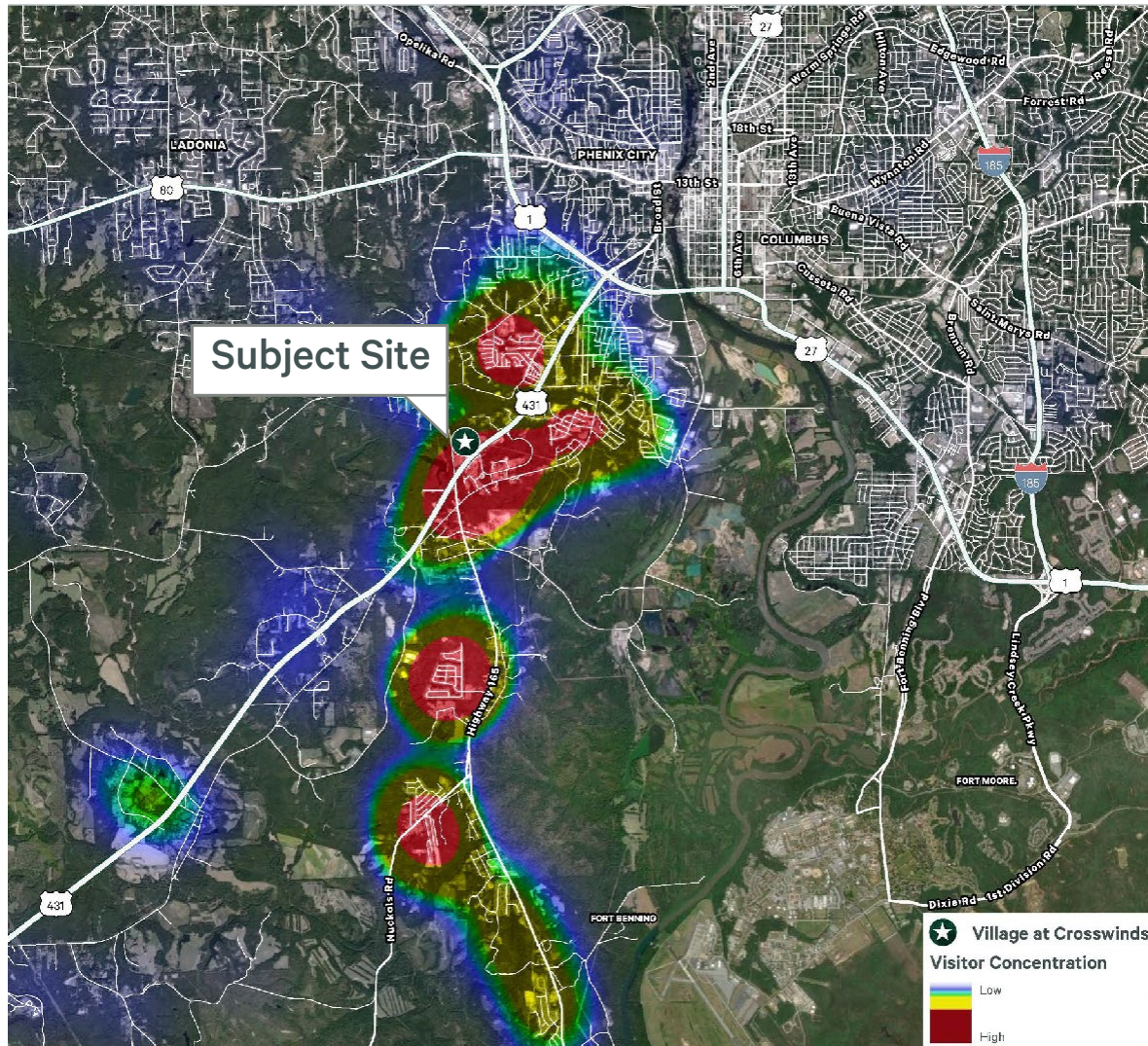
Availability



Prime Location



Traffic Volume



- + Over **456K** annual visits
- + **429.8K** visits are generated by repeated visitors
- + Ranked in the top **35%** nationwide
- + Experienced a **17.7%** increase in visits Y02Y

Data provided by Placer.ai

The Village at Crosswinds

3482 Crosswinds Road | Phenix City, Alabama 36869

For Lease

Market Rankings

	Local	State	National
Renfroe's Market	1/1	3/7	3/7
Wendy's	2/7	7/88	781/5,672
Marco's Pizza	4/6	25/38	497/1,023
Waffle House	2/15	49/151	418/1,928

Data provided by Placer.ai



The Village at Crosswinds

3482 Crosswinds Road | Phenix City, Alabama 36869

For Lease

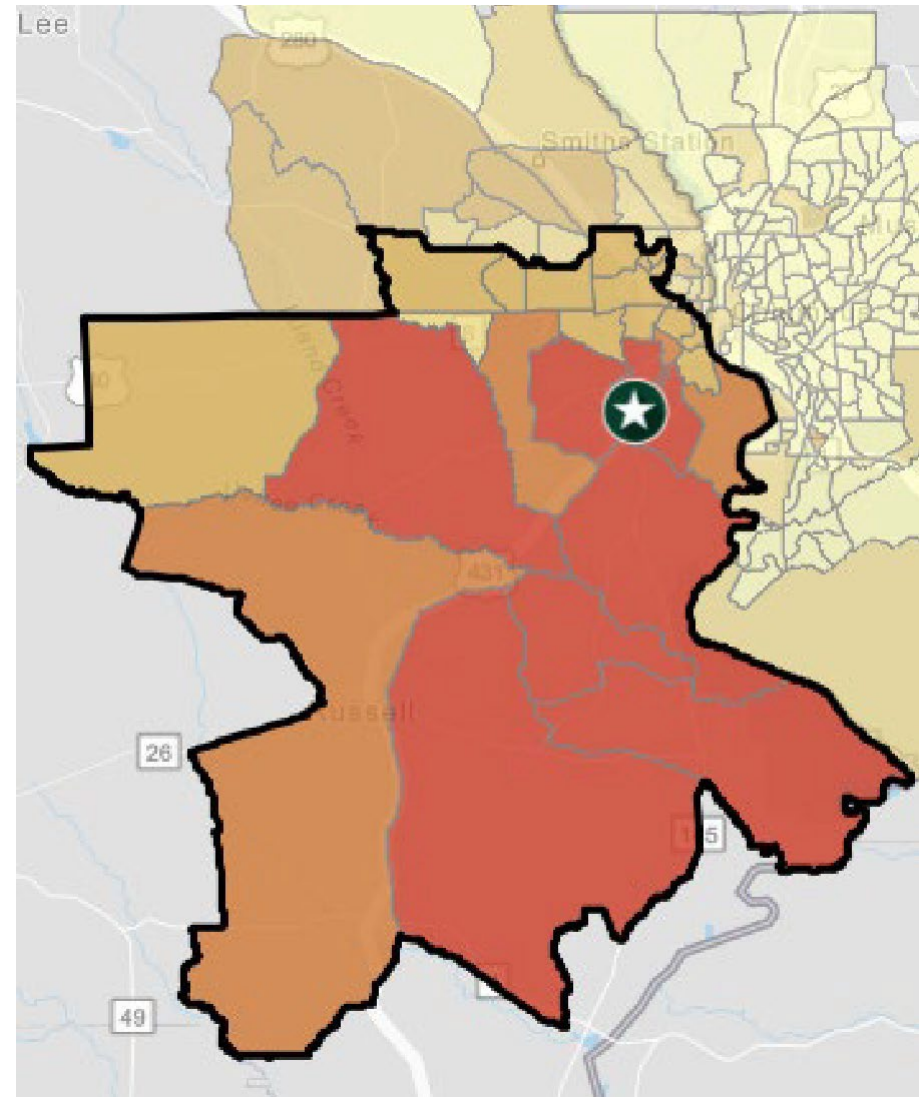
Demographics

Mobile Mass Data Trade Area Demographics	
Population	62,946
Daytime Population	48,731
Average HH Income	\$72,454
Average HH Size	2.55
Housing	26,609 Units
Median Age	36.9

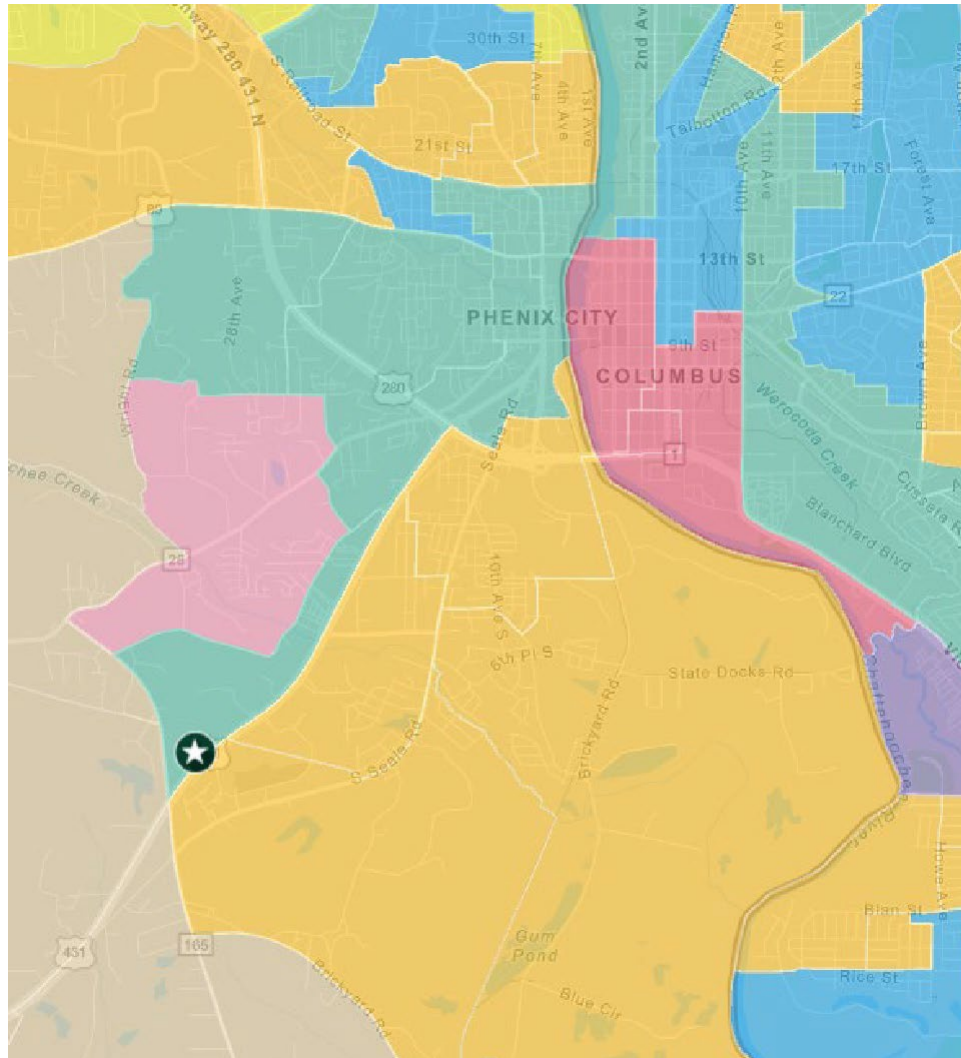
Surrounding Area

- + Sierra Pacific Windows to invest \$60 million in new manufacturing facility bringing between 300 and 500 jobs to the area
- + Less than 10 minutes from Columbus attractions including the Columbus Civic Center
- + Located across from Chattahoochee Valley Community College, Troy University – Phenix City Campus, and The District at Phenix City
- + Minutes from Ridgecrest Elementary School, Phenix City Youth Sports Complex and South Girard Jr. High School

Nearby City	Distance
Columbus	4.7 Miles
Fort Benning	12.6 Miles
Opelika	29.6 Miles
Auburn	39 Miles



Tapestry Segmentation



Southern Satellites Rustic Outposts

23%

Southern Satellites is the second largest market found in rural settlements but within metropolitan areas located primarily in the South. These settled married-couple families enjoy outdoor activities and DIY home projects.

Up and Coming Families Sprouting Explorers

13%

Residents are younger and more mobile than the previous generation. This ambitious, hard-working, and risk-taking market is the fastest-growing market in the country.

Middleburg Family Landscapes

11%

Within the last decade, the Middleburg neighborhoods transformed from country living to semirural subdivision. These residents include traditional, family-oriented consumers. This market is younger but growing in size and assets.

The Village at Crosswinds

3482 Crosswinds Road | Phenix City, Alabama 36869

For Lease



Contact Us

**Shannon Tyndall
Rockwell**

Vice President

+1205 563 4583

Shannon.tyndall@cbre.com

© 2024 CBRE, Inc. All rights reserved. This information has been obtained from sources believed reliable but has not been verified for accuracy or completeness. CBRE, Inc. makes no guarantee, representation or warranty and accepts no responsibility or liability as to the accuracy, completeness, or reliability of the information contained herein. You should conduct a careful, independent investigation of the property and verify all information. Any reliance on this information is solely at your own risk. CBRE and the CBRE logo are service marks of CBRE, Inc. All other marks displayed on this document are the property of their respective owners, and the use of such marks does not imply any affiliation with or endorsement of CBRE. Photos herein are the property of their respective owners. Use of these images without the express written consent of the owner is prohibited.

www.cbre.com/birminghamal

The logo for CBRE, consisting of the letters "CBRE" in a bold, green, sans-serif font.