



FOR LEASE

UNIVERSITY EXECUTIVE CENTER

3101 & 3225 UNIVERSITY BOULEVARD
JACKSONVILLE, FLORIDA 32216

OFFICE / MEDICAL



FOR LEASE

UNIVERSITY EXECUTIVE CENTER

3101 & 3225 UNIVERSITY BOULEVARD • JACKSONVILLE, FLORIDA 32216

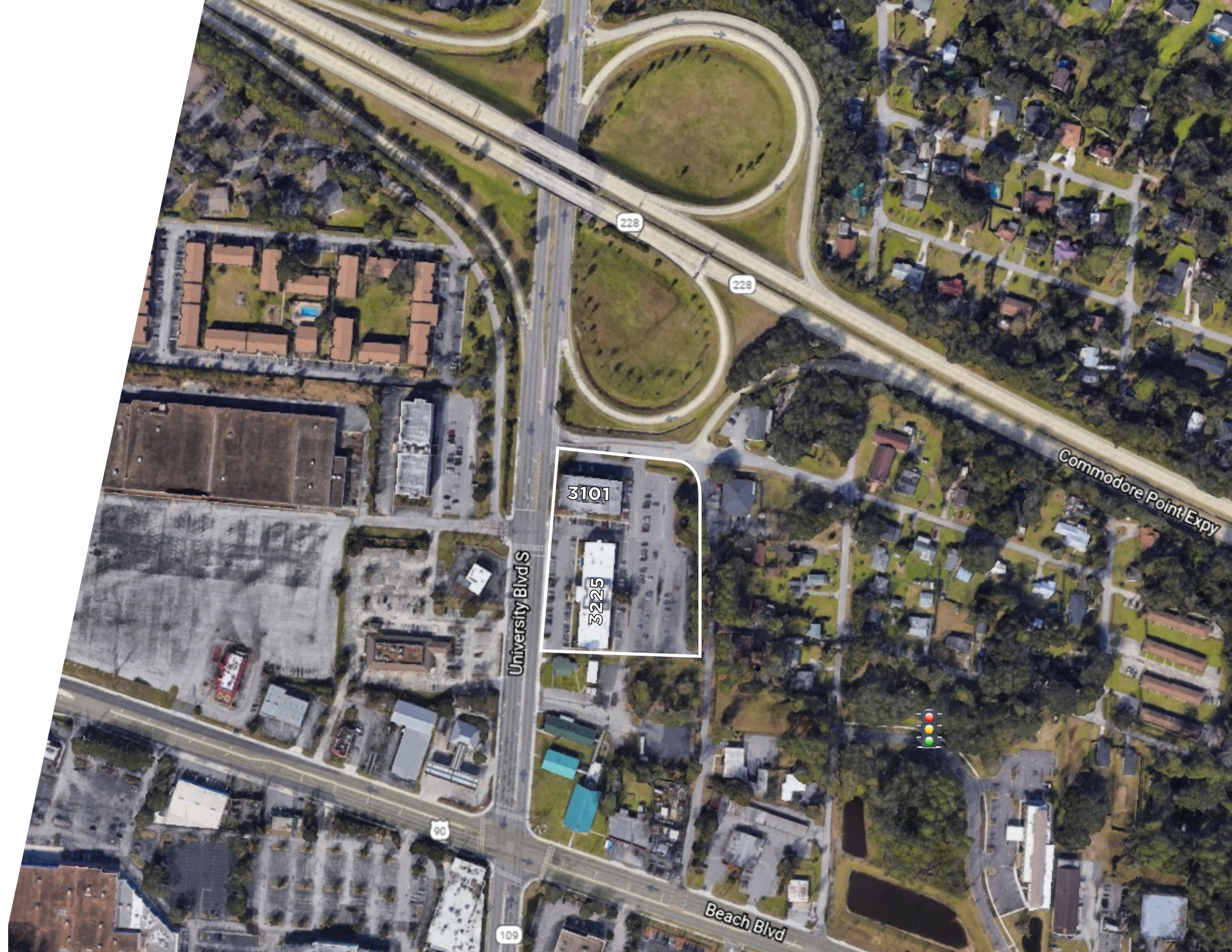


BUILDING AMENITIES

- Two, two-story buildings
- Building and pylon signage available
- Ample parking for patients, clients and employees
- Direct access to the Hart Expressway
- Turnkey and custom-built plans available

PROPERTY HIGHLIGHTS

- Located at University and Beach Blvd. near Memorial Hospital and Brooks Rehabilitation
- Multiple restaurant options nearby



UNIVERSITY EXECUTIVE CENTER

BUILDING FEATURES

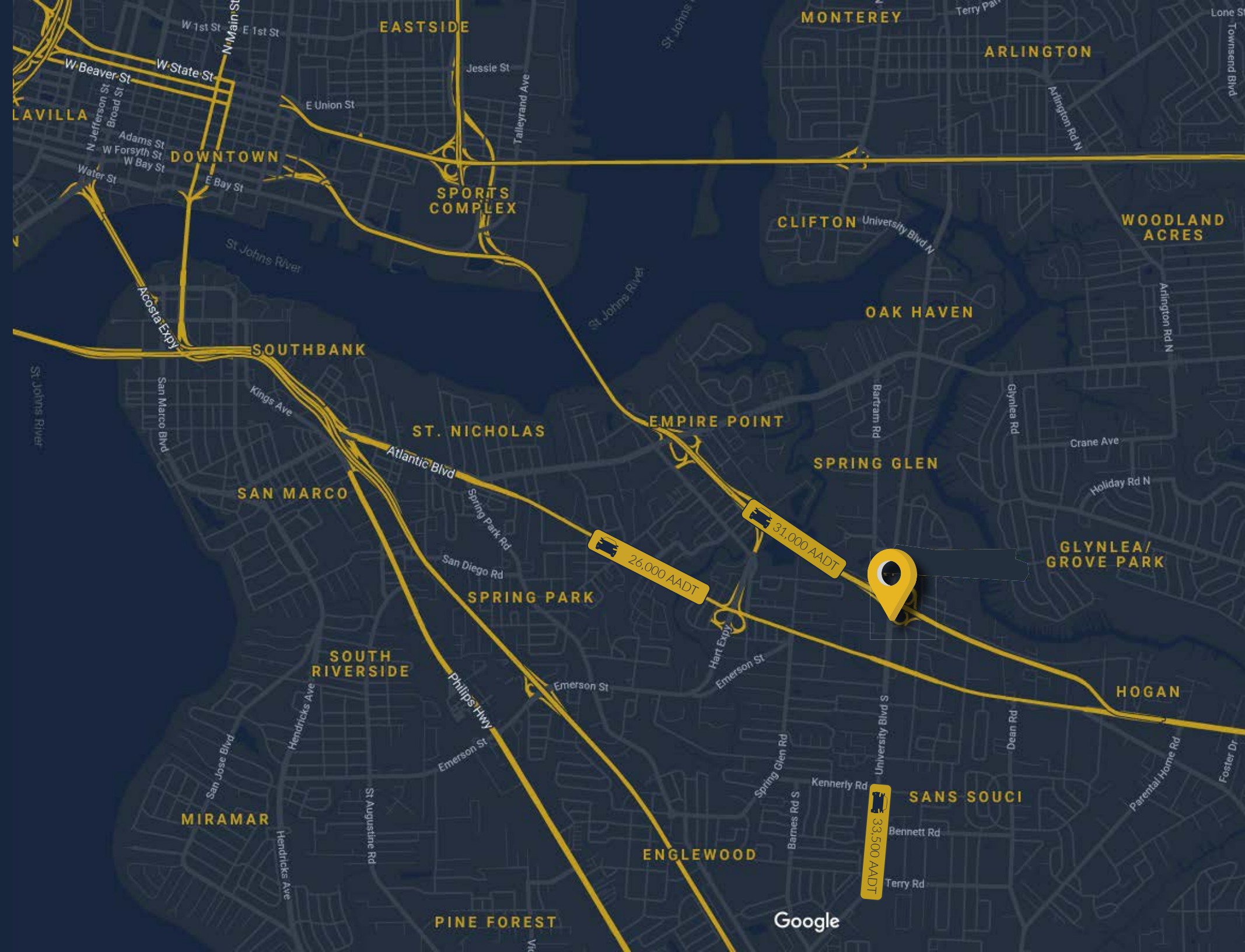
TOTAL SQ. FT. 53,896 SF

TOTAL AVAILABLE ± 1,636 -6,630 SF

LEASE RATE Negotiable

ZONING CCG-1

DEMOGRAPHICS	1 MILE	3 MILES	5 MILES
POPULATION	8,974	79,133	206,751
HOUSEHOLDS	3,597	32,349	85,957
MEDIAN HH INCOME	\$41,955	\$41,353	\$44,986
AVERAGE HH INCOME	\$55,771	\$57,753	\$71,803

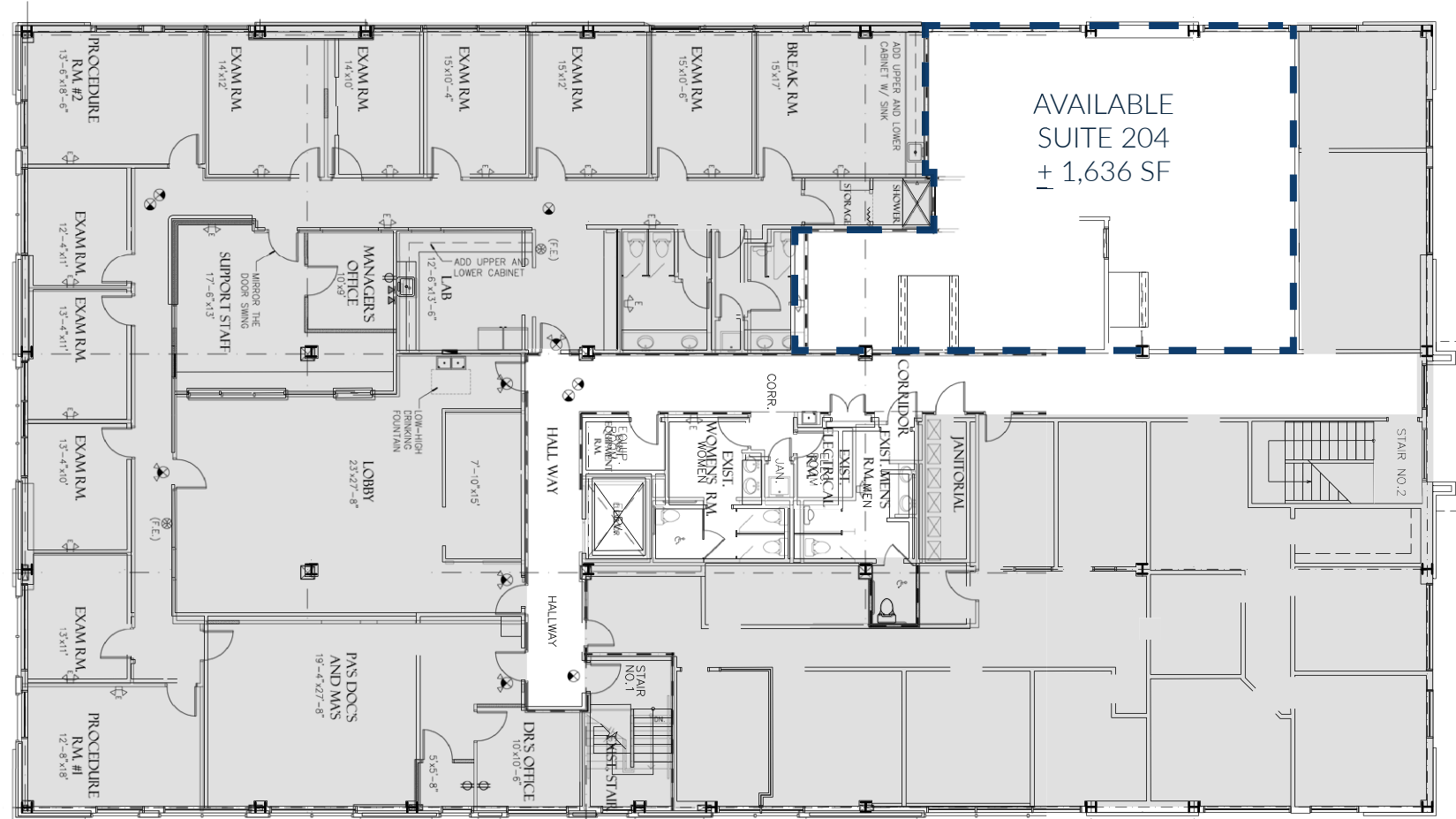




FOR LEASE

UNIVERSITY EXECUTIVE CENTER

3101 UNIVERSITY BOULEVARD • JACKSONVILLE, FLORIDA 32216

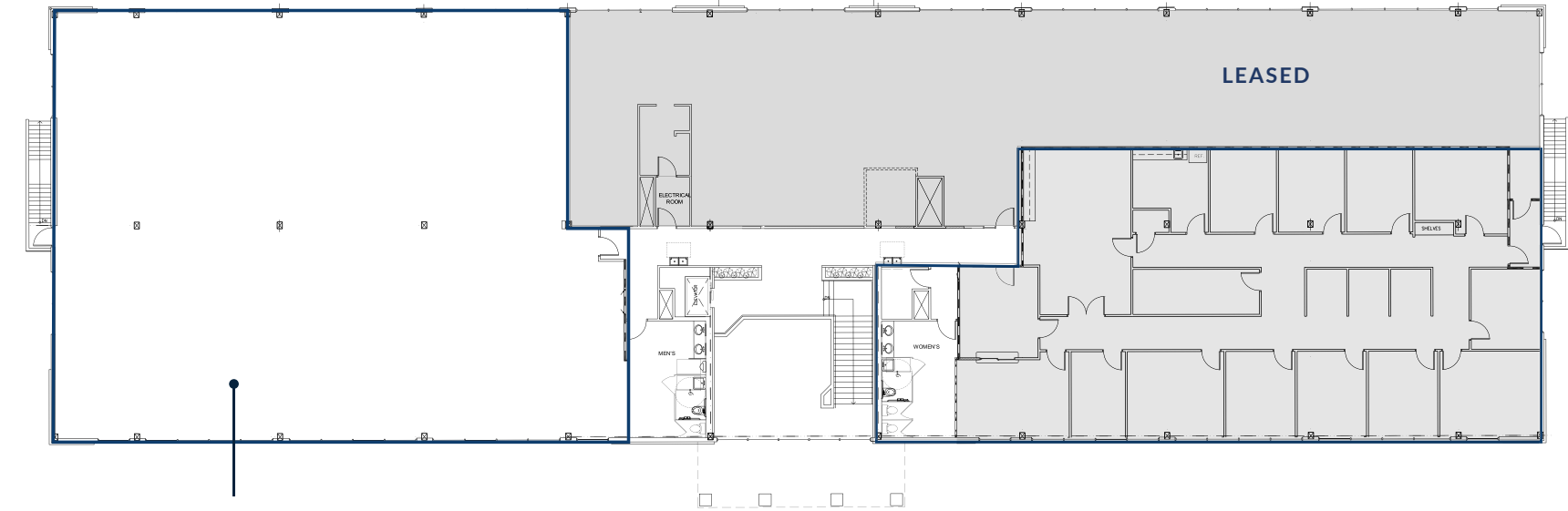


2nd FLOOR

FOR LEASE

UNIVERSITY EXECUTIVE CENTER

3225 UNIVERSITY BOULEVARD • JACKSONVILLE, FLORIDA 32216



AVAILABLE SUITE 205
+ 6,630 SF

2nd FLOOR



John Hodges, Director of Real Estate Services
leasing@imc-jax.com

7915 Baymeadows Way
Suite 400
Jacksonville, FL 32256

T: 904.737.8846

www.imc-jax.com

The information provided on this brochure is for general informational purposes only. Although all information furnished regarding property for sale, rental, or financing is diligently checked for reliability, International Management Company, LLC ("IMC") makes no express representation nor is any to be implied as to the accuracy thereof and may be subject to errors, omissions, change of price, rental or other conditions, prior sale, lease or financing, or withdrawal without notice. No guarantees are made about the accuracy or completeness of the content.

