

149
West 27th Street
CHELSEA
NEW YORK, NY

RETAIL/OFFICE
FOR LEASE



149 West 27th St is a 3,100 SF retail/office space across the entire 2nd floor. This versatile space features direct elevator access, column free lay-out and excellent branding with window and flag signage. Currently leased to Judo operator, space is perfect for a fitness/wellness, creative or office uses.

APPROX SIZE

2nd Floor: 3,100 SF

CROSS STREETS

6th & 7th Aves

TERM

Negotiable

POSSESSION

Immediate

Ceilings

11-12 FT

ASKING

\$12,500/Month

HIGHLIGHTS

- Direct elevator access
- Entire 2nd Floor
- Column Free Space
- Steps from FIT and 1-train
- Surrounded by hotels
- Window and Flag Pole Signage

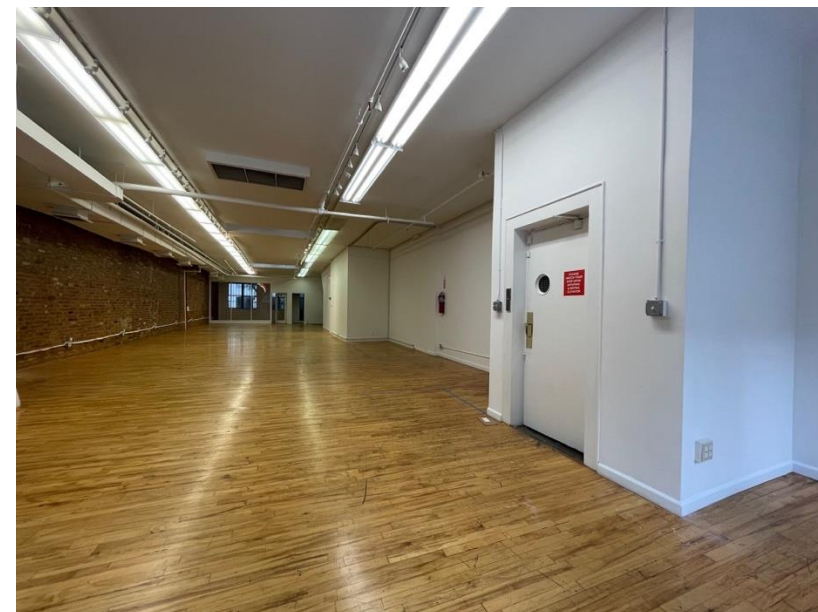
NEIGHBORING TENANTS

- FIT
- Powerhouse Gyn
- Cava & Chipotle
- Playa Bowl
- Moxy Hotel

TRANSIT



All information and opinions contained herein are sourced from parties considered reliable but are not independently verified, and no guarantee, warranty, or representation is made as to their accuracy. This material is subject to errors, omissions, changes in terms, and withdrawal without notice, and prospective tenants should rely on their own investigation.



149
West 27th Street

CHELSEA, NY

FOR ADDITIONAL INFORMATION
PLEASE INQUIRE

YARON COHEN
516-780-4106
YARON@LEVIATHANCRE.COM

ELIE COHEN
917-708-0511
ELIE@LEVIATHANCRE.COM

DANIEL COHEN
516-426-9959
DANIEL@LEVIATHANCRE.COM

