



**A**

5711 Clementshire St, Houston, TX 77087

**KW** COMMERCIAL



**Joseph Licata**

Keller Williams Realty, Inc.

1220 Augusta Dr, Suite 300, Houston, TX 77057

[joseph@casabelladevelopment.com](mailto:joseph@casabelladevelopment.com)

(713) 298-0963



# A

\$10.86 /SF/YR

5711 Clementshire Uit A. Houston, TX 77087; Well maintained office warehouse, close proximity to 610 and I45, Hobby Airport, Downtown, Pasadena Refineries and port of Houston. Building is +- 2782 Sq ft, has 3 phase power, Space has a fenced in yard, Warehouse has 2 offices with a window unit in each, private bathroom, Unit has an eave height is 18' with a 21' center height. Tenant will need to submit an application, go through credit and background checks....



|              |                |
|--------------|----------------|
| Rental Rate: | \$10.86 /SF/YR |
|--------------|----------------|

|                |            |
|----------------|------------|
| Property Type: | Industrial |
|----------------|------------|

|                   |           |
|-------------------|-----------|
| Property Subtype: | Warehouse |
|-------------------|-----------|

|                         |          |
|-------------------------|----------|
| Rentable Building Area: | 2,782 SF |
|-------------------------|----------|

|             |      |
|-------------|------|
| Year Built: | 2017 |
|-------------|------|

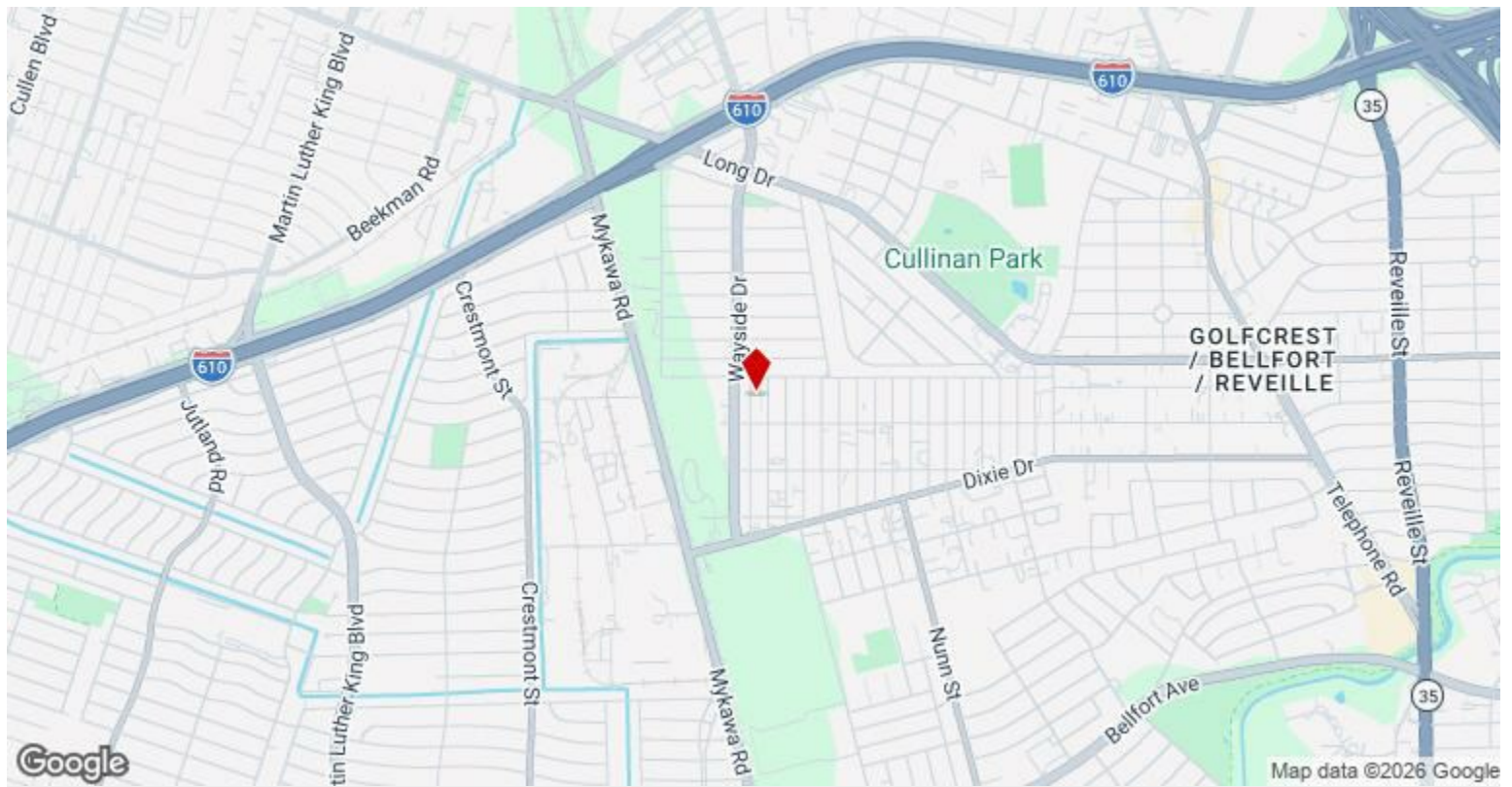
|                 |               |
|-----------------|---------------|
| Rental Rate Mo: | \$0.91 /SF/MO |
|-----------------|---------------|

## 1st Floor

1

|                 |                  |
|-----------------|------------------|
| Space Available | 2,782 SF         |
| Rental Rate     | \$10.86 /SF/YR   |
| Date Available  | Now              |
| Service Type    | Triple Net (NNN) |
| Space Type      | Relet            |
| Space Use       | Industrial       |
| Lease Term      | 2 - 5 Years      |

Rent is \$2400NNN is \$470.10



## 5711 Clementshire St, Houston, TX 77087

5711 Clementshire Unit A. Houston, TX 77087; Well maintained office warehouse, close proximity to 610 and I45, Hobby Airport, Downtown, Pasadena Refineries and port of Houston. Building is +- 2782 Sq ft, has 3 phase power, Space has a fenced in yard, Warehouse has 2 offices with a window unit in each, private bathroom, Unit has an eave height is 18' with a 21' center height. Tenant will need to submit an application, go through credit and background checks.

# Property Photos



# Property Photos



Interior Photo

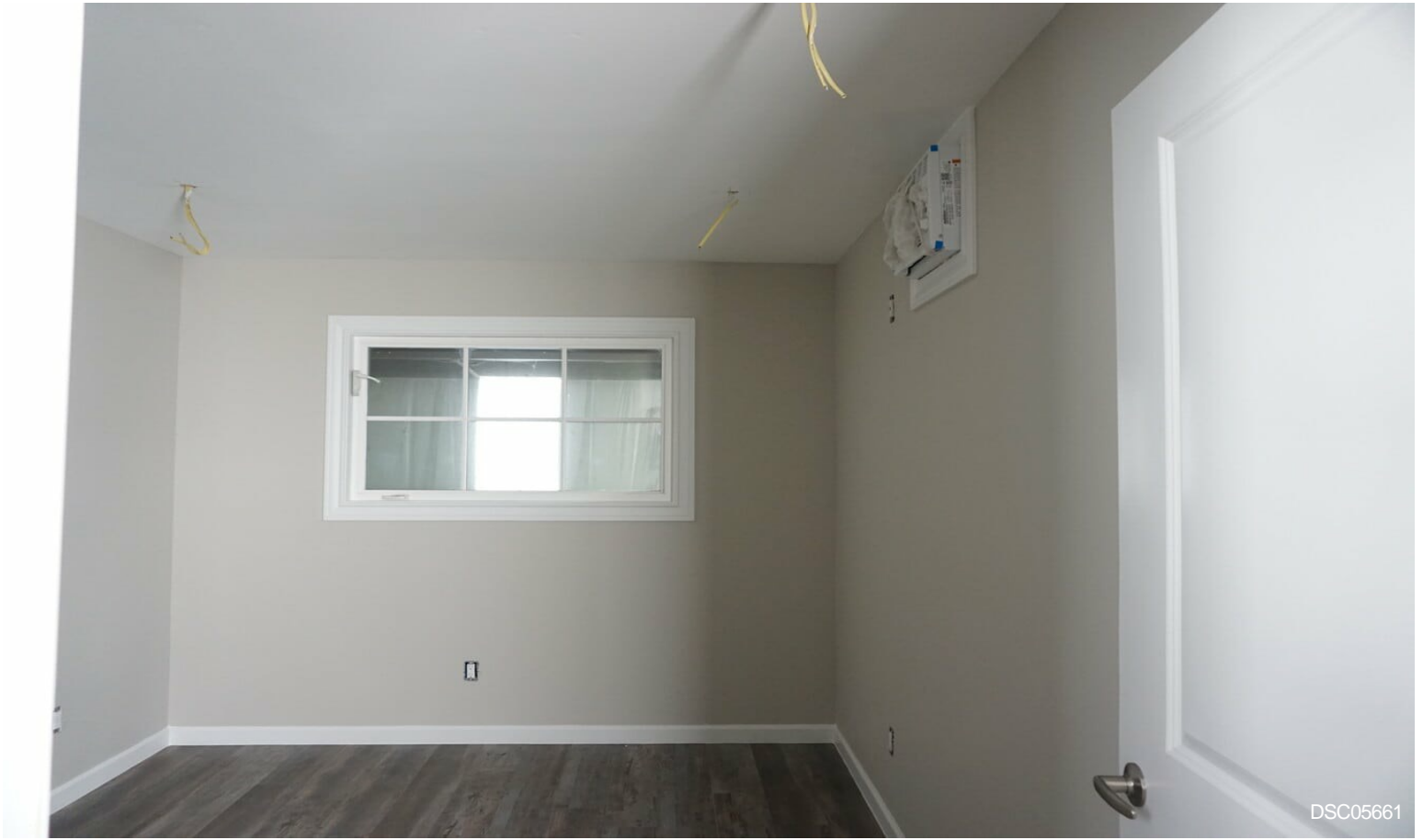


Primary

# Property Photos



# Property Photos



DSC05661