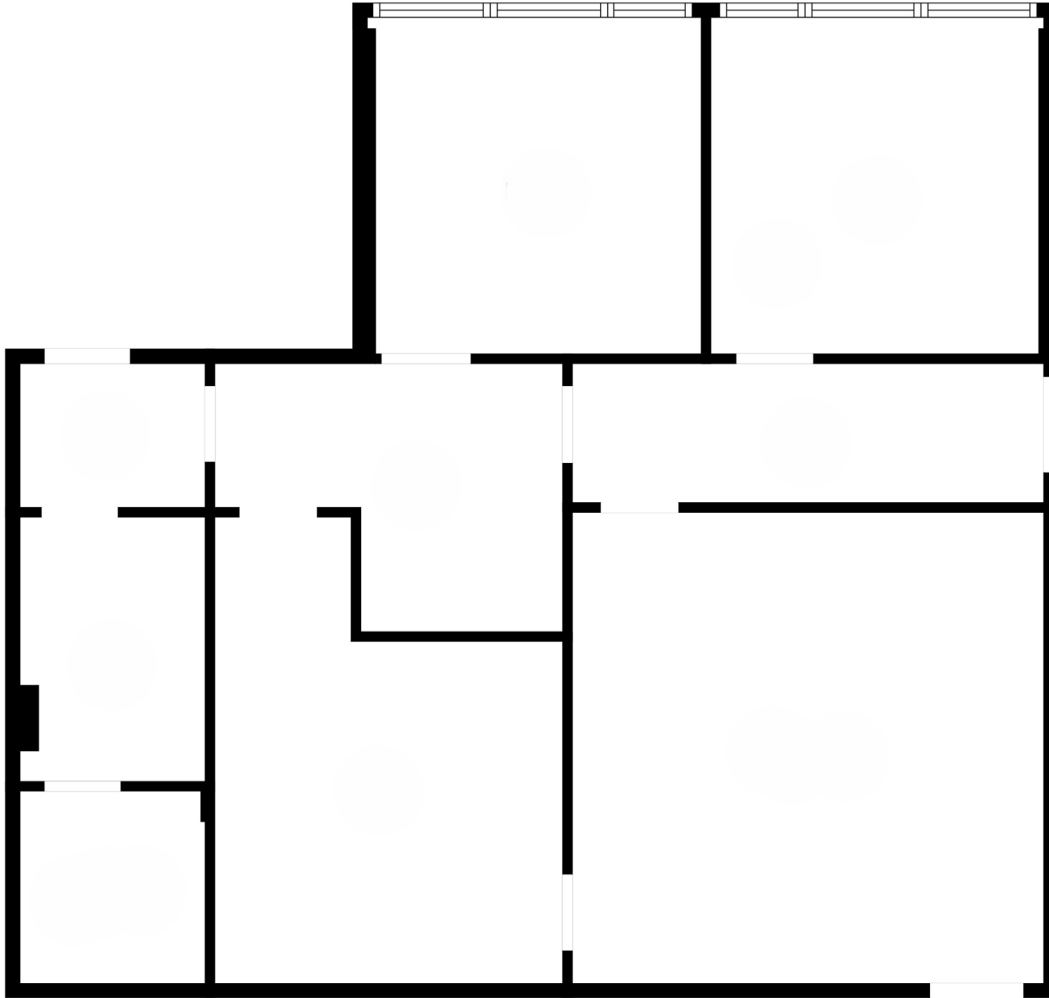
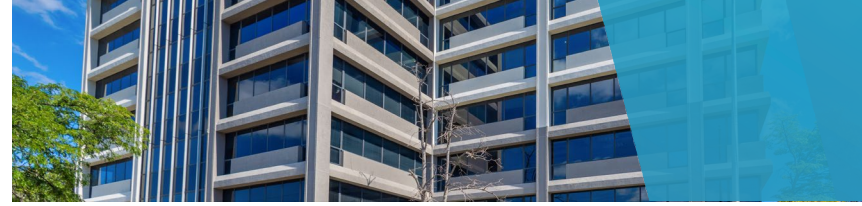


SUITE 230 | 1,385 SF

O'Hare Corporate Towers \ 10400 W Higgins Rd \ Rosemont, IL



SPACE NOTES

- Updated Common Area Finishes
- On-Site Management
- Covered Parking
- Conference Facility
- In-Suite Restrooms



RYAN MOEN, SIOR
630.480.6346
RMoen@VersaRES.com

STEVEN REA
630.468.1780
SRea@VersaRES.com

JOHN MILLNER, CCIM
630.480.6342
JMillner@VersaRES.com

1 MID AMERICA PLAZA, 3RD FLOOR
OAKBROOK TERRACE, IL 60181
630.480.6413

EXCLUSIVELY LISTED BY
VERSA
REAL ESTATE SERVICES