

2525

PIO NONO AVE
SUITE 1100

MIDDLE GEORGIA
INDUSTRIAL PARK

23,565 SF Distribution / 3PL Facility
with Optional ± 3.5 Acre Trailer Yard



For Lease
23,000 SF

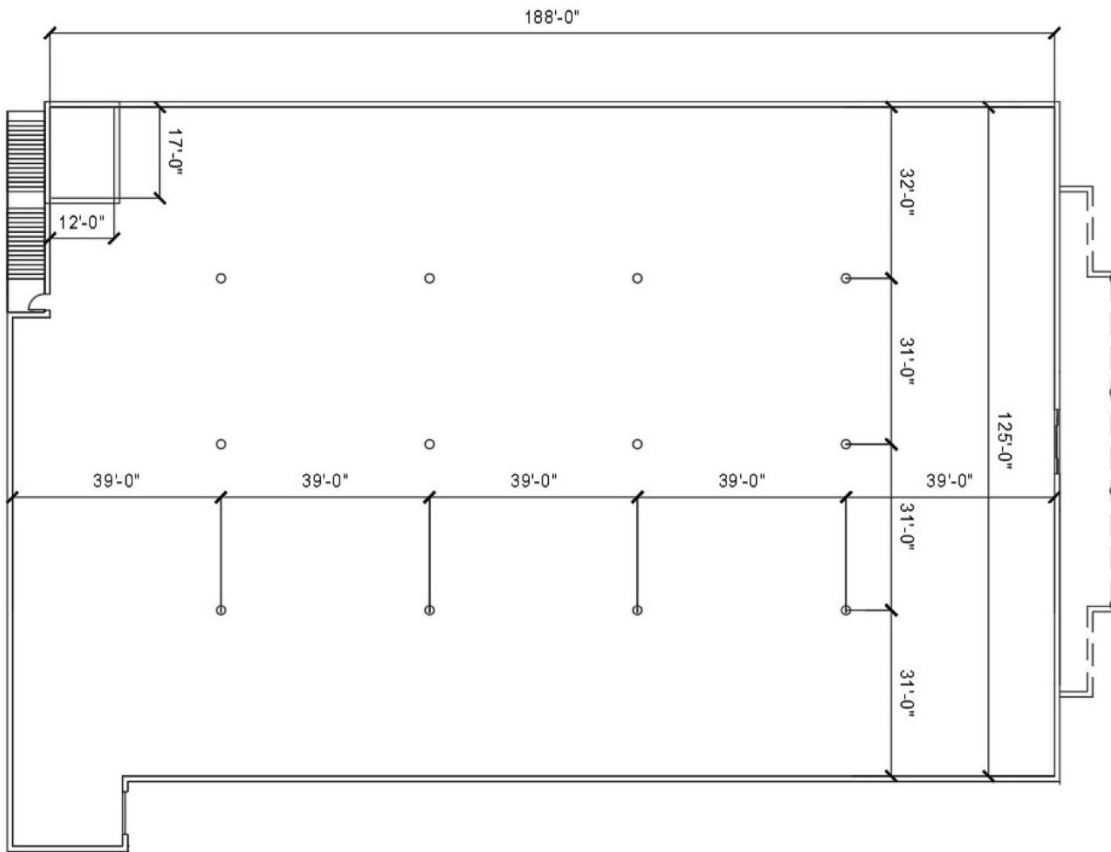


DRONE FOOTAGE
CLICK HERE

CUSHMAN &
WAKEFIELD

FICKLING
& COMPANY

// PROPERTY OVERVIEW

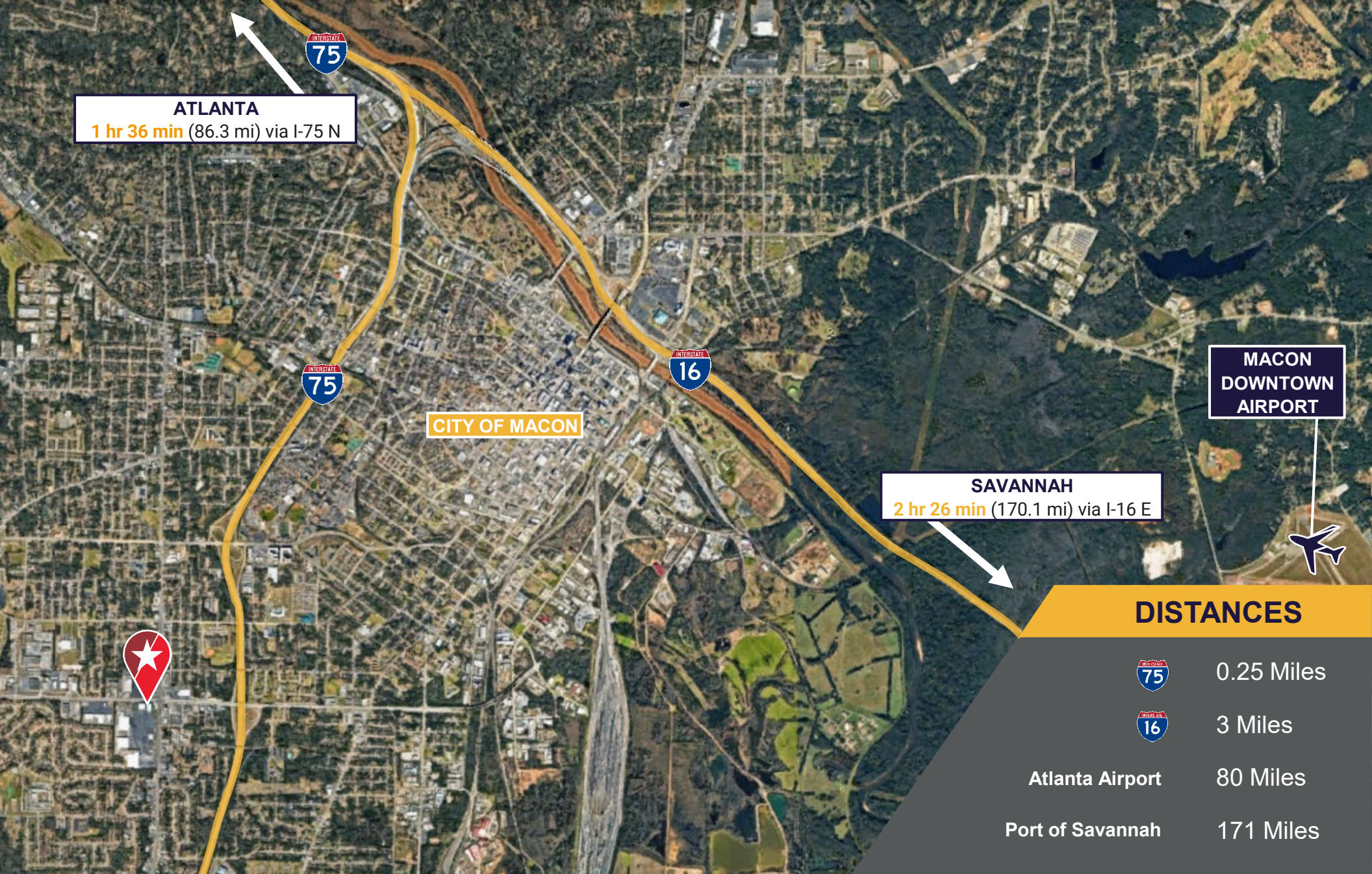


Ready for Immediate Occupancy
Brand New Renovations
Extensive Trailer and Auto Parking
Annual CAM of \$1.70 PF



Located within Middle Georgia Industrial Park, this 23,565 SF industrial facility is strategically positioned for third-party logistics (3PL) operations, regional distribution, last-mile delivery, and fleet-based logistics services. The site includes an optional ±3.5-acre laydown yard ideal for trailer storage, fleet staging, container drop, and outdoor equipment storage.






ATLANTA
1 hr 36 min (86.3 mi) via I-75 N

CITY OF MACON

SAVANNAH
2 hr 26 min (170.1 mi) via I-16 E

MACON DOWNTOWN AIRPORT

DISTANCES

 0.25 Miles

 3 Miles

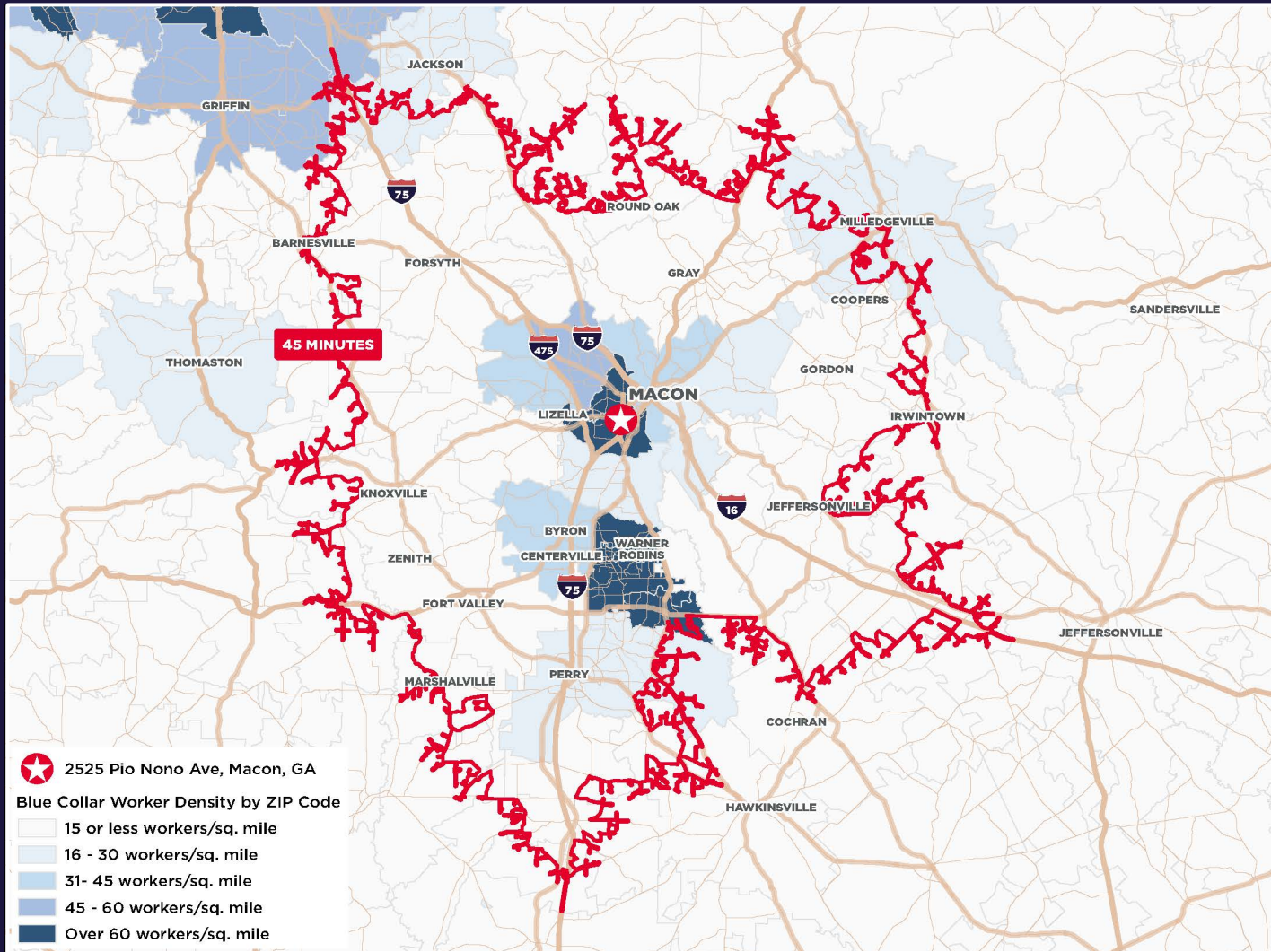
Atlanta Airport 80 Miles

Port of Savannah 171 Miles

// LOCATION OVERVIEW

// MIDDLE GEORGIA INDUSTRIAL PARK
2525 Pio Nono Ave Suite 1100, Macon, GA

// LABOR MAP



// CONTACT

GILBERT VALDEZ
+1 404 853 5207
gilbert.valdez@cushwake.com

CHASE WALKER
+1 404-460-8670
chase.walker@cushwake.com

LAN HEALTH
+1 478 746 9421
lhealth@fickling.com

