

16,000 SF WAREHOUSE HWY 14 W/ 1,840 SF OFFICE | INDUSTRIAL PROPERTY FOR LEASE

1142 AL 14 ELMORE, AL 36025



OFFERING SUMMARY

Lease Rate:	Call For Pricing
Building Size:	16,000 SF
Available SF:	14,400 - 16,000 SF
Lot Size:	14.36 Acres
Year Built:	1972

PROPERTY OVERVIEW

This expansive property offers a spacious open layout, providing ample space for flexible configuration to suit your needs. With high visibility and road frontage on Alabama 14, your business will benefit from optimal exposure. The property boasts ample parking for both staff and customers and offers convenient access to major transportation routes. Situated in a vibrant and growing community, this space provides the perfect environment for business success. Don't miss the opportunity to elevate your business in this exceptional location. 16,000 SF of Warehouse space and a 1,840 SF Office. 20' ceilings throughout and multiple ground-level overhead doors. An additional 14,400 SF warehouse on site has had a new roof installed and is available for lease. For more information, contact Ed Fleming at 334-652-2121 or Mickey Phillips at 334-312-1100.

PROPERTY HIGHLIGHTS

- Spacious open layout for flexible configuration
- High visibility with road frontage on Alabama 14
- Ample parking for staff and customers
- Convenient access to major transportation routes
- Located in a vibrant and growing community
- Additional 14,400 SF warehouse available

ED FLEMING
defleming7@gmail.com
334.652.2121

**THE RIGHT PLACE.
THE RIGHT SPACE.**

*All information is from sources deemed reliable, but no warranty is made as to the accuracy thereof and same is submitted subject to errors, omissions, change of price, or other conditions, such as prior sales or withdrawal without notice by Hodges Commercial Real Estate, Inc. or the Owner.

LEASE SPACES



LEASE INFORMATION

Lease Type:	MG	Lease Term:	Negotiable
Total Space:	14,400 - 16,000 SF	Lease Rate:	Call for Pricing

AVAILABLE SPACES

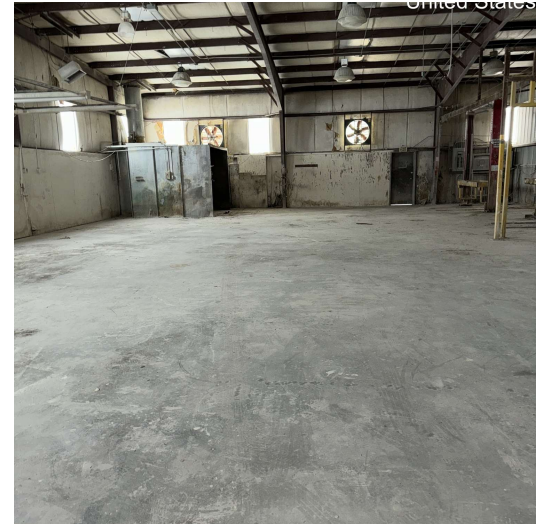
SUITE	TENANT	SIZE (SF)	LEASE TYPE	LEASE RATE
1142 Hwy. 14 - 16,000 SF Warehouse Hwy 14 w/ 1,840 SF Office	Available	16,000 SF	Modified Gross	Call for Pricing
14,400 SF Warehouse	Available	14,400 SF	Modified Gross	Call for Pricing

ED FLEMING
defleming7@gmail.com
334.652.2121

**THE RIGHT PLACE.
THE RIGHT SPACE.**

16,000 SF WAREHOUSE HWY 14 W/ 1,840 SF OFFICE | INDUSTRIAL PROPERTY FOR LEASE

PHOTOS



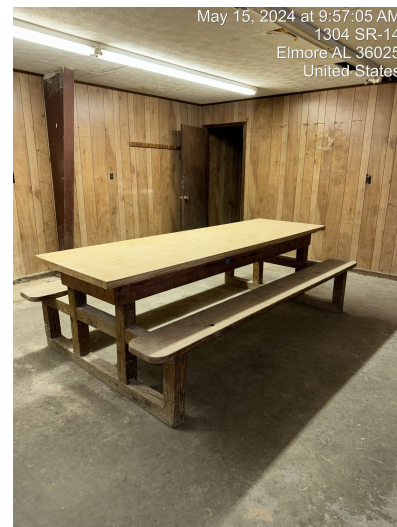
May 15, 2024 at 9:56:09 AM
SR-14
Elmore AL 36025
United States



May 15, 2024 at 9:55:45 AM
SR-14
Coosada AL 36025
United States



May 15, 2024 at 9:56:48 AM
SR-14
Coosada AL 36025
United States
Wetumpka Municipal Airport



May 15, 2024 at 9:57:05 AM
1304 SR-14
Elmore AL 36025
United States

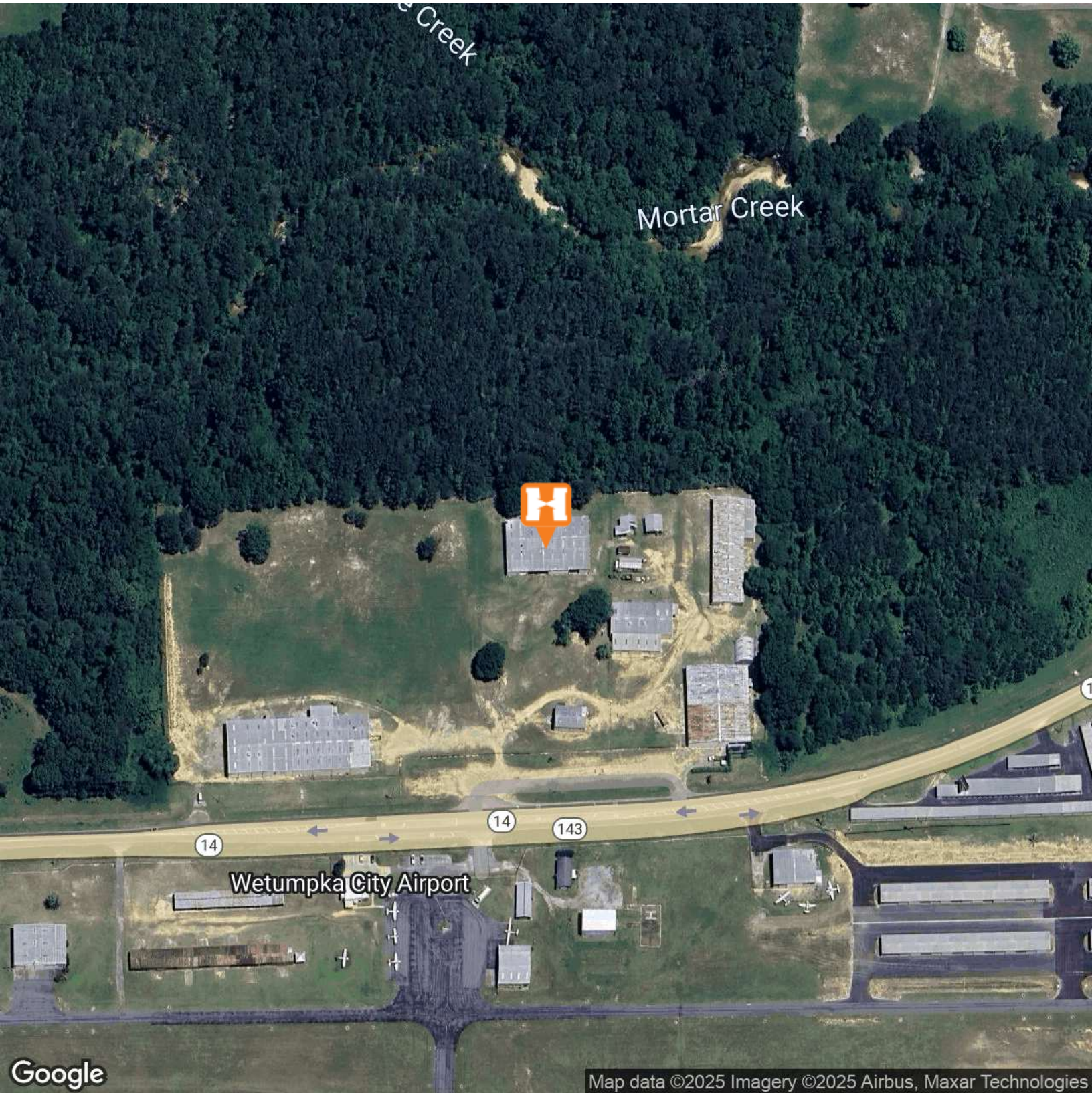
ED FLEMING
defleming7@gmail.com
334.652.2121

**THE RIGHT PLACE.
THE RIGHT SPACE.**

*All information is from sources deemed reliable, but no warranty is made as to the accuracy thereof and same is submitted subject to errors, omissions, change of price, or other conditions, such as prior sales or withdrawal without notice by Hodges Commercial Real Estate, Inc. or the Owner.

16,000 SF WAREHOUSE HWY 14 W/ 1,840 SF OFFICE | INDUSTRIAL PROPERTY FOR LEASE

AERIAL MAP



Map data ©2025 Imagery ©2025 Airbus, Maxar Technologies

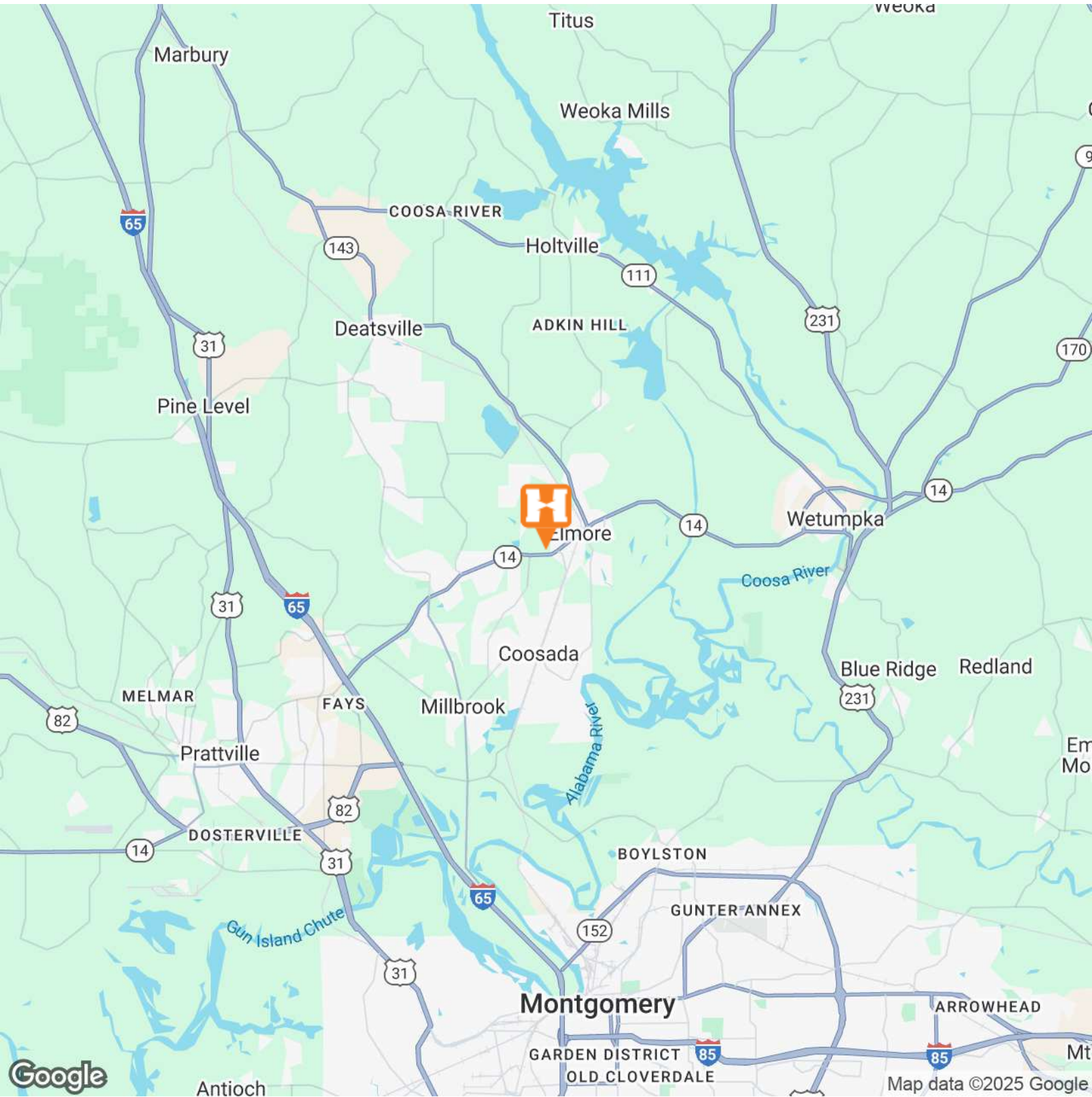
ED FLEMING
defleming7@gmail.com
334.652.2121

**THE RIGHT PLACE.
THE RIGHT SPACE.**

*All information is from sources deemed reliable, but no warranty is made as to the accuracy thereof and same is submitted subject to errors, omissions, change of price, or other conditions, such as prior sales or withdrawal without notice by Hodges Commercial Real Estate, Inc. or the Owner.

16,000 SF WAREHOUSE HWY 14 W/ 1,840 SF OFFICE | INDUSTRIAL PROPERTY FOR LEASE

LOCATION MAP

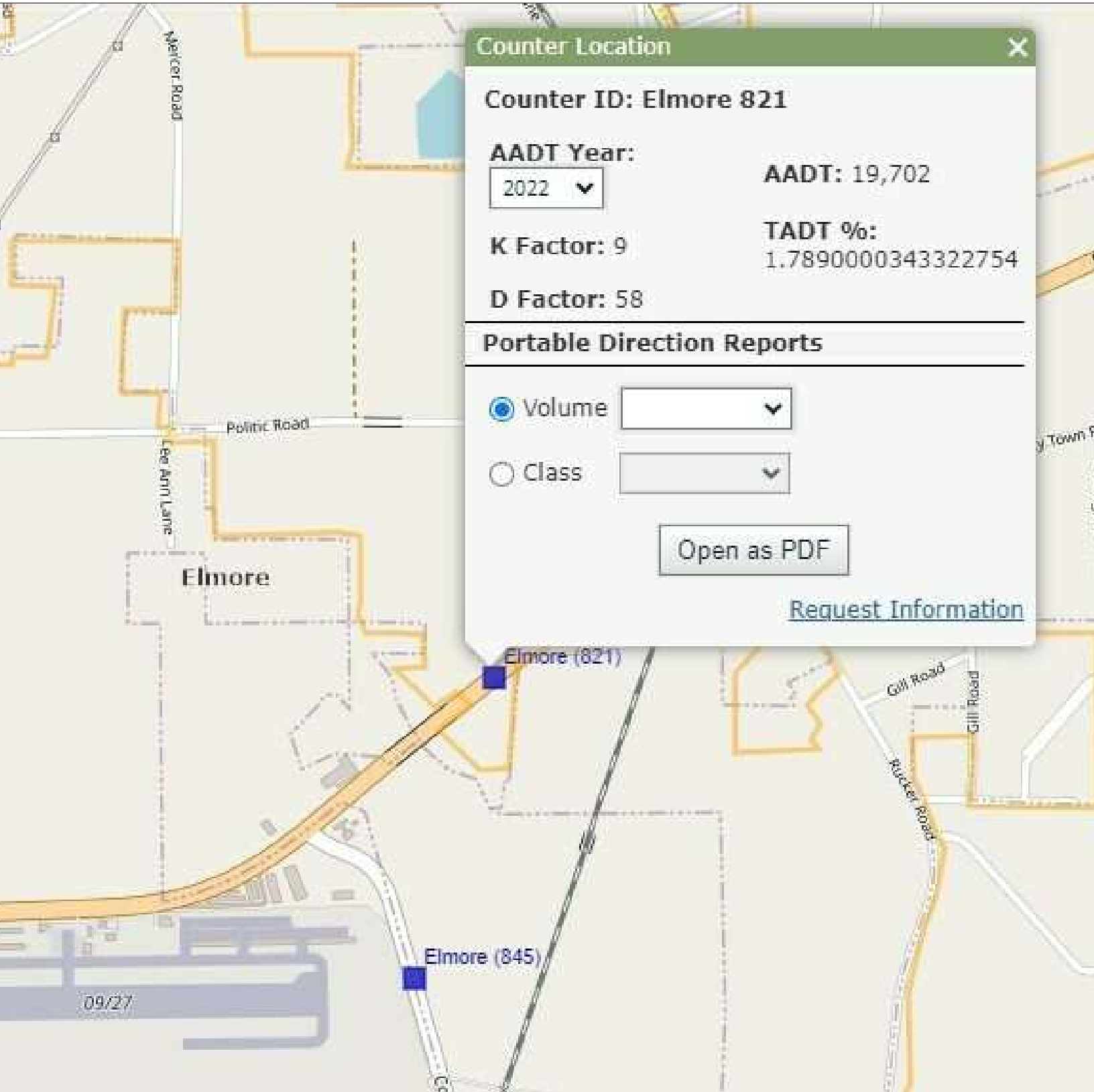


ED FLEMING
defleming7@gmail.com
334.652.2121

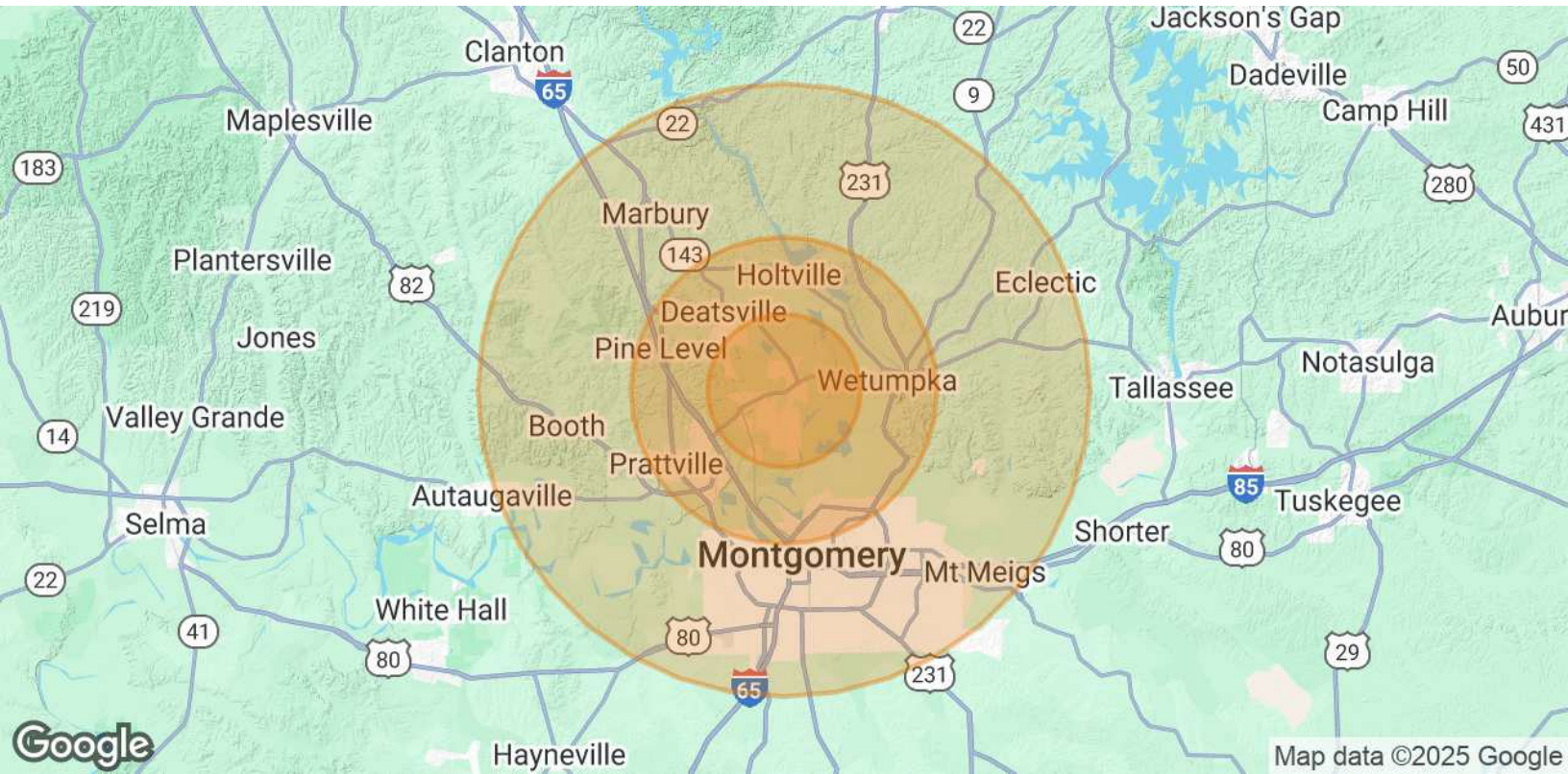
**THE RIGHT PLACE.
THE RIGHT SPACE.**

*All information is from sources deemed reliable, but no warranty is made as to the accuracy thereof and same is submitted subject to errors, omissions, change of price, or other conditions, such as prior sales or withdrawal without notice by Hodges Commercial Real Estate, Inc. or the Owner.

TRAFFIC DATA



DEMOGRAPHICS MAP & REPORT



POPULATION	5 MILES	10 MILES	20 MILES
Total Population	29,660	101,181	350,475
Average Age	39	40	40
Average Age (Male)	38	39	39
Average Age (Female)	40	41	41

HOUSEHOLDS & INCOME	5 MILES	10 MILES	20 MILES
Total Households	10,119	37,155	138,202
# of Persons per HH	2.9	2.7	2.5
Average HH Income	\$69,064	\$82,172	\$79,975
Average House Value	\$192,819	\$214,187	\$220,142

Demographics data derived from AlphaMap

ED FLEMING
 defleming7@gmail.com
 334.652.2121

**THE RIGHT PLACE.
 THE RIGHT SPACE.**