

Oxford Companies
734.665.6500
oxfordcompanies.com

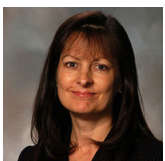


Integrated
Real Estate
Services



Office Building For Lease
Burlington Office Center
315 E Eisenhower Parkway, Suite 11
Ann Arbor, MI 48108

7,473 SF
\$28.00 SF/yr (MG)



Contact Karen O'Neil for
more information or to
schedule a tour.

Office: 734.665.6500
Cell: 734.323.4263
koneil@oxfordcompanies.com

Burlington Office Center
315 E Eisenhower Parkway, Suite 11
Ann Arbor, MI 48108



Integrated
Real Estate
Services



OFFERING SUMMARY

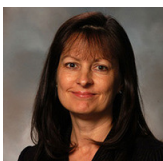
Lease Rate:	\$28.00 SF/yr (MG)
Available SF:	7,473 SF
Year Built:	1986
Renovated:	2013
Ceiling Height:	9'
Parking Ratio:	3
Zoning:	TC1
Submarket:	South Ann Arbor

PROPERTY OVERVIEW

The Burlington Office Center is one of the most prominent business centers in Ann Arbor's desirable Southside businesses corridor. Burlington is situated on more than five acres of walkable, private wooded land and provides approximately 200,000 square feet of upscale, class A office space. Home to the largest private pond in the area, Burlington integrates incomparable scenic beauty with a professional Ann Arbor office environment. This three-building office center is unsurpassed in good looks, location, and convenience. Spaces at Burlington offer floor-to-ceiling windows with spectacular views and renovated common areas, including bathrooms and new awnings – the perfect blank slate for building out your ideal office space.

PROPERTY HIGHLIGHTS

- Suite is furnished and move-in ready
- Beautiful Class A three-building office center with floor to ceiling windows with spectacular views
- Renovated common areas, including bathrooms and new awnings
- Ample parking with covered parking available
- Fiber optic internet
- Five minutes to downtown Ann Arbor, immediate access to I-94 via S. State St. & Ann Arbor-Saline Rd.



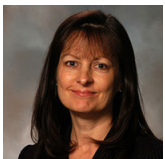
Contact Karen O'Neil for more information or to schedule a tour.

Office: 734.665.6500
Cell: 734.323.4263
koneil@oxfordcompanies.com

Burlington Office Center
315 E Eisenhower Parkway, Suite 11
Ann Arbor, MI 48108



Integrated
Real Estate
Services



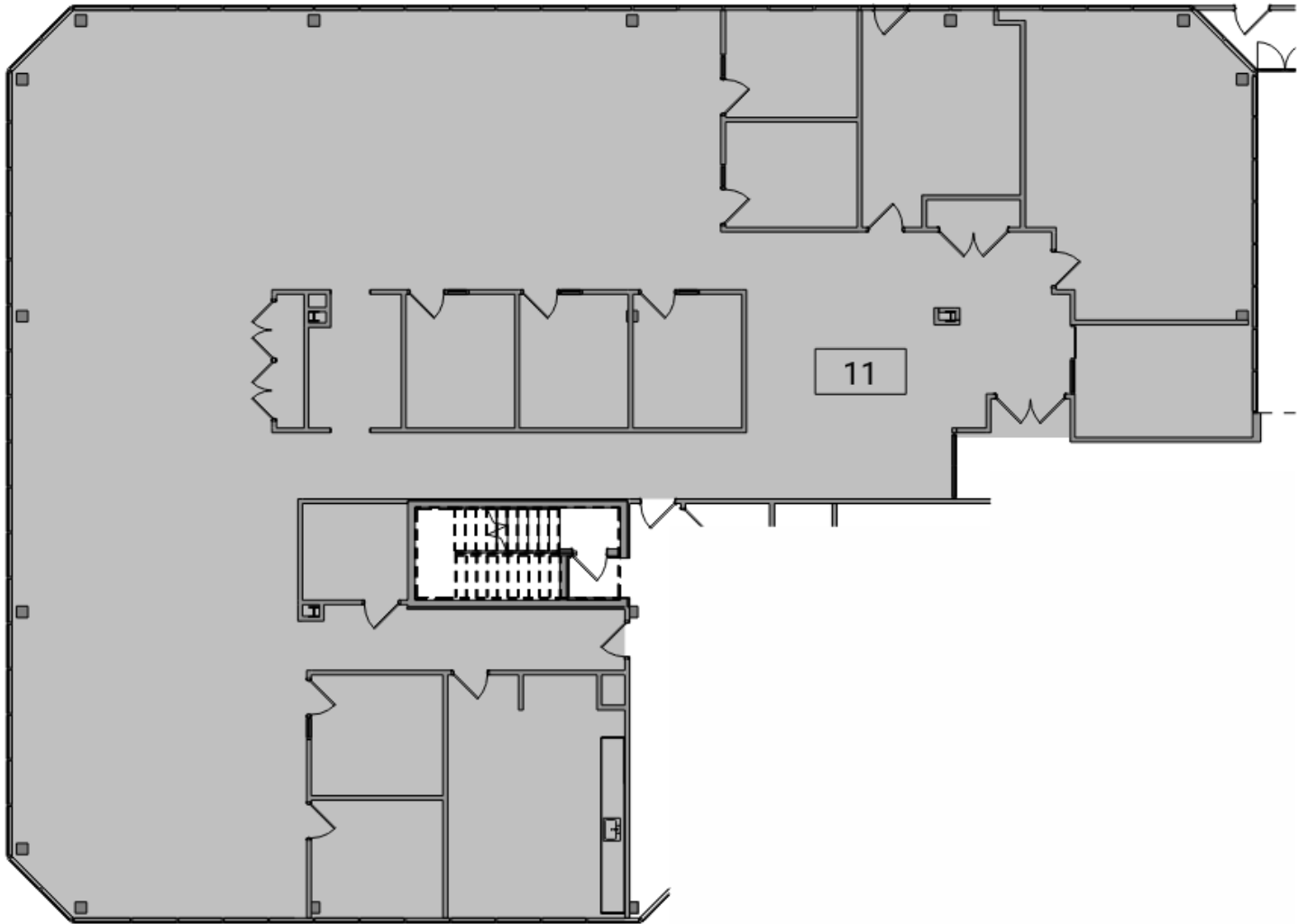
Contact Karen O'Neil for
more information or to
schedule a tour.

Office: 734.665.6500
Cell: 734.323.4263
koneil@oxfordcompanies.com

Burlington Office Center
315 E Eisenhower Parkway, Suite 11
Ann Arbor, MI 48108




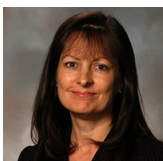
Integrated
Real Estate
Services



 Suite 11 - Partial Garden Level Existing Floor Plan
1/16" = 1'-0"
8' 16'



 Key Plan - Garden Level
1" = 80'-0"
80'



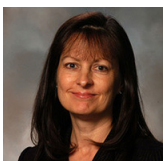
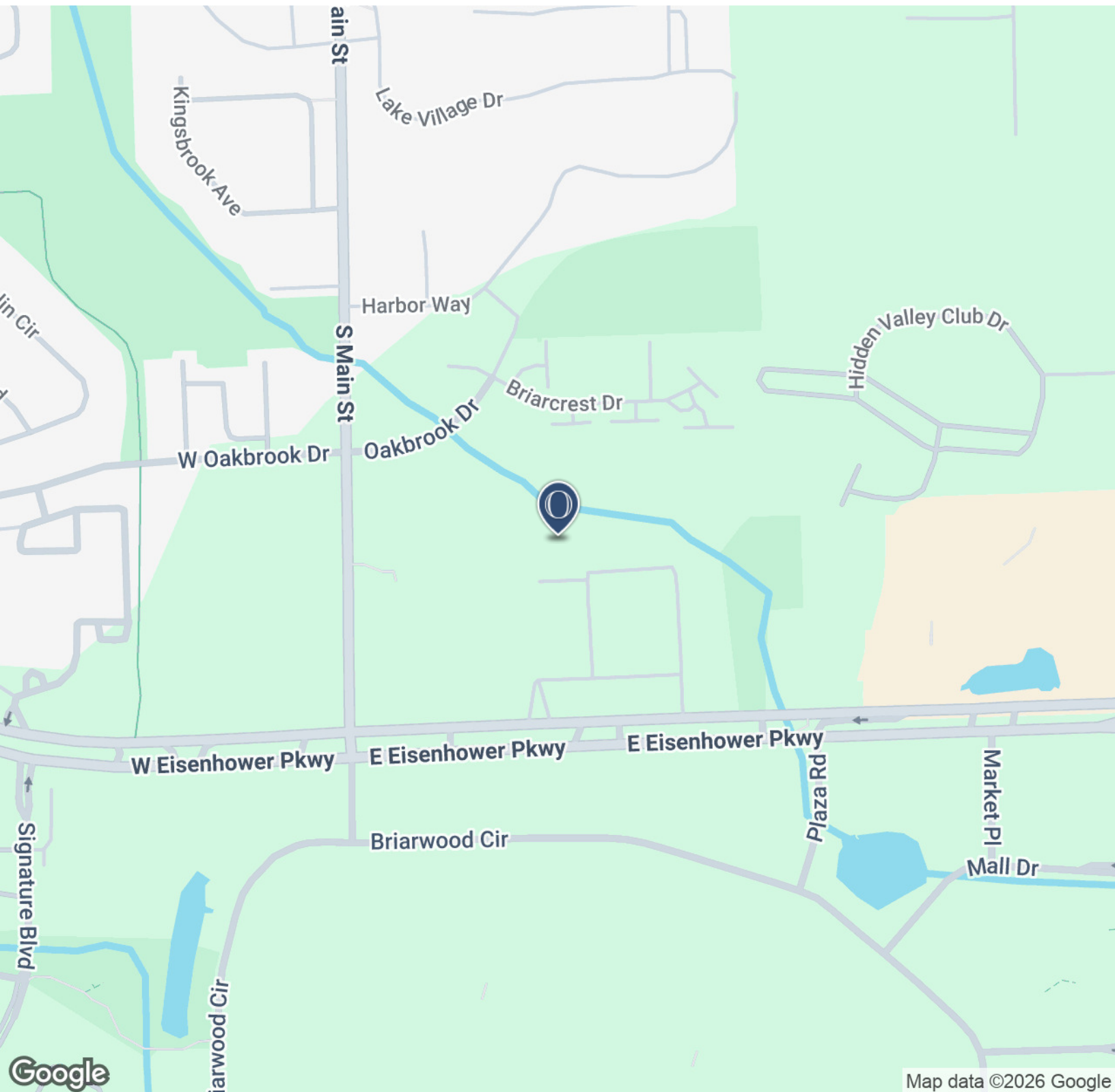
Contact Karen O'Neil for more information or to schedule a tour.

Office: 734.665.6500
Cell: 734.323.4263
koneil@oxfordcompanies.com

Burlington Office Center
315 E Eisenhower Parkway, Suite 11
Ann Arbor, MI 48108



Integrated
Real Estate
Services



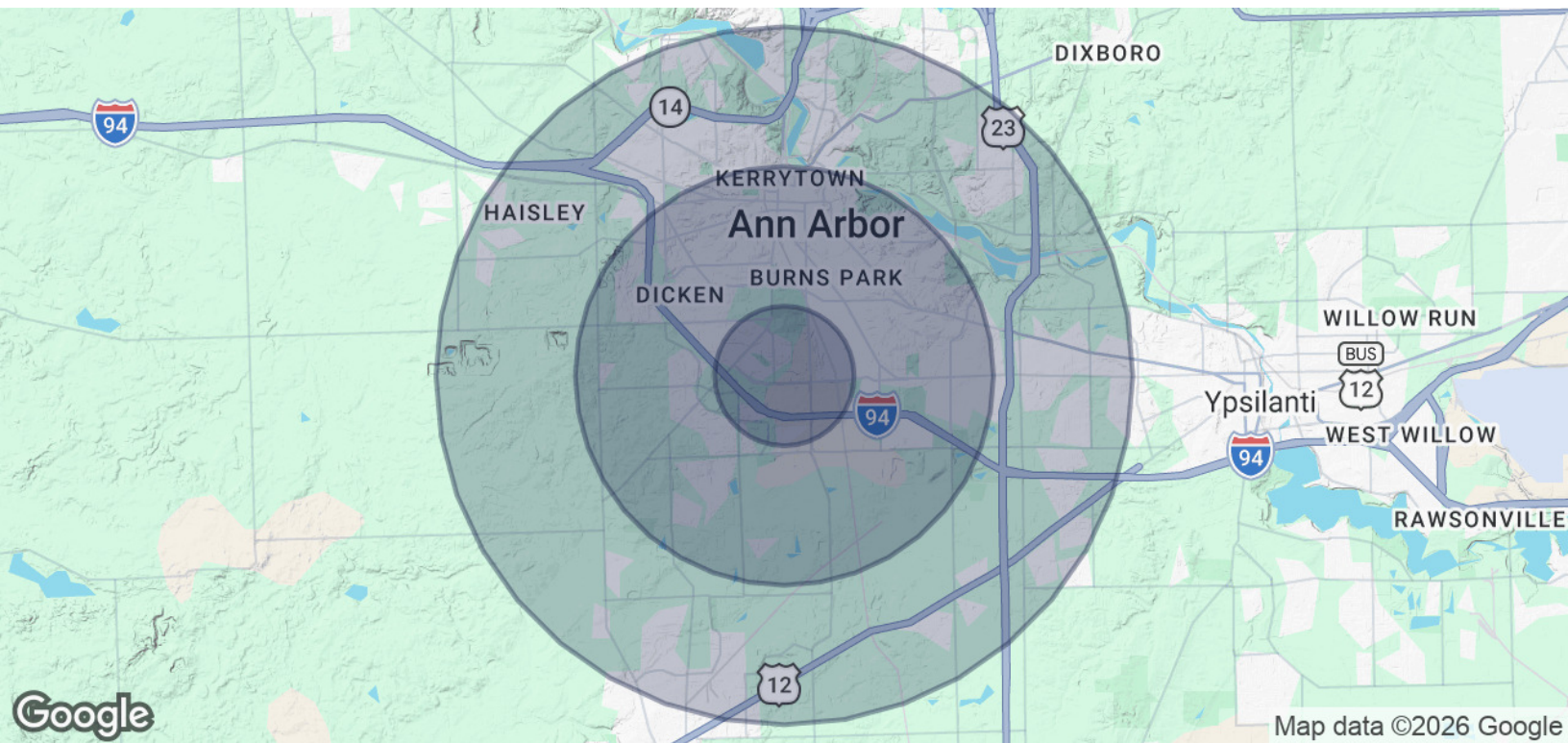
Contact Karen O'Neil for
more information or to
schedule a tour.

Office: 734.665.6500
Cell: 734.323.4263
koneil@oxfordcompanies.com

Burlington Office Center
 315 E Eisenhower Parkway, Suite 11
 Ann Arbor, MI 48108



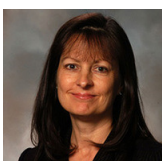
Integrated
 Real Estate
 Services



POPULATION	1 MILE	3 MILES	5 MILES
Total Population	7,564	92,324	171,314
Average Age	41	36	37
Average Age (Male)	39	35	36
Average Age (Female)	43	37	38

HOUSEHOLDS & INCOME	1 MILE	3 MILES	5 MILES
Total Households	4,060	38,235	71,097
# of Persons per HH	1.9	2.4	2.4
Average HH Income	\$136,171	\$120,649	\$123,909
Average House Value	\$439,452	\$512,126	\$485,047

* Demographic data derived from 2020 ACS - US Census



Contact Karen O'Neil for more information or to schedule a tour.

Office: 734.665.6500
 Cell: 734.323.4263
koneil@oxfordcompanies.com