

NORTHWEST PROFESSIONAL BUILDING

OFFICE SPACE FOR LEASE | 9494 N GOVERNMENT WAY | HAYDEN, ID 83835



CLICK HERE!
VIRTUAL TOUR

CONTACT

BRENNEN CRAWFORD
208.755.0920
brennen@tokcommercial.com

HIGHLIGHTS

- Executive Office Spaces Available
- Convenient Hayden Location
- High Traffic Counts
- Signage Right off of Government Way
- Self Storage Units Available

DETAILS

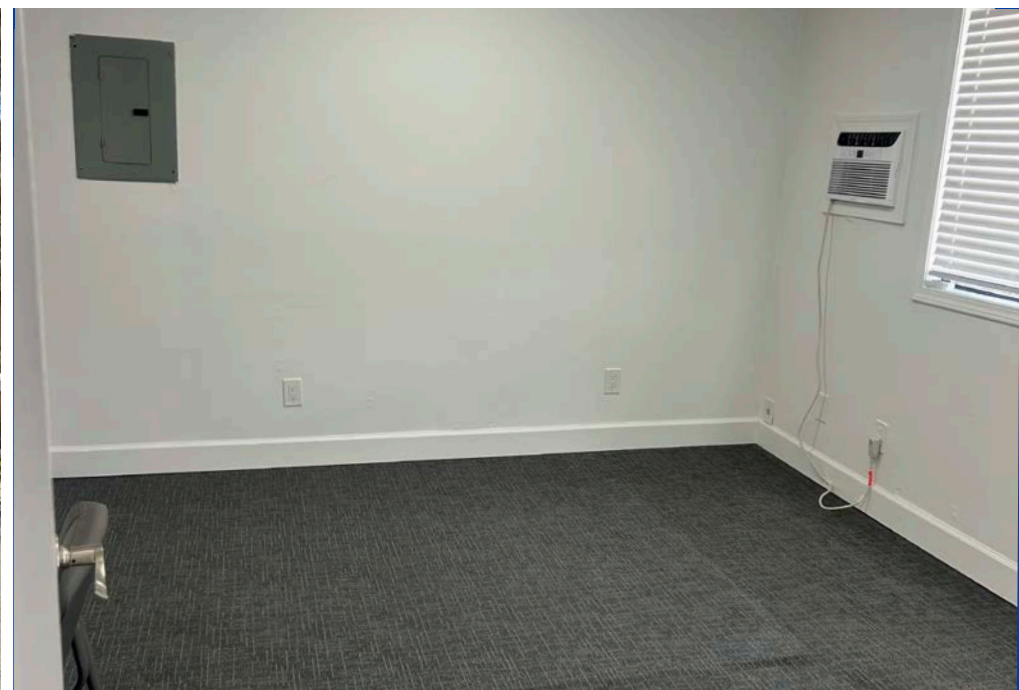
SPACE	SIZE	RATE
Suite 202	220 SF	\$850/Month
BLDG SIZE	6,205 SF	ZONING Hayden-CBD
LOT SIZE	.91 Acres	LEASE TYPE Full Service
YEAR BUILT	1978	

UPDATED: 4.9.2026

THIS PROPERTY IS EXCLUSIVELY MARKETED BY TOK INLAND NORTHWEST LLC DBA TOK COMMERCIAL
This information was obtained from sources believed reliable but cannot be guaranteed. Any opinions or estimates are used for example only.



HIGH VISIBILITY SIGNAGE



UPDATED: 4.9.2026

THIS PROPERTY IS EXCLUSIVELY MARKETED BY TOK INLAND NORTHWEST LLC DBA TOK COMMERCIAL

This information was obtained from sources believed reliable but cannot be guaranteed. Any opinions or estimates are used for example only.



AVAILABLE STORAGE UNITS



UPDATED: 4.9.2026

THIS PROPERTY IS EXCLUSIVELY MARKETED BY TOK INLAND NORTHWEST LLC DBA TOK COMMERCIAL

This information was obtained from sources believed reliable but cannot be guaranteed. Any opinions or estimates are used for example only.

AERIAL MAP

EASY ACCESS FROM GOVERNMENT WAY



UPDATED: 4.9.2026

THIS PROPERTY IS EXCLUSIVELY MARKETED BY TOK INLAND NORTHWEST LLC DBA TOK COMMERCIAL

This information was obtained from sources believed reliable but cannot be guaranteed. Any opinions or estimates are used for example only.

