



# 167 S. Mountain Way Dr.

OREM, UT 84058

## For Sublease

### Property Highlights

- 13,045 total rentable square feet
  - Office downstairs: ±4,072 SF
  - Office upstairs: ±3,872 SF
  - Warehouse: 5,101 SF
- Office showers
- New HVAC and power in office
- Two (2) dock high doors (8'x8') with bumpers
- One (1) dock high door (8'x9') with bumpers
- One (1) 12x14 ground level door
- Clear height: 22'
- 0.44 acres of potential fenced yard/parking
- 400 amps / 240 volt / 3-phase power
- Immediate access to I-15

*For information, please contact:*

#### **Ben Richardson**

*Executive Managing Director*

t 801-746.4733

richardson@newmarkmw.com

#### **Eli Priest**

*Senior Managing Director*

t 801-746-4746

epriest@newmarkmw.com

#### **Kolby Long**

*Associate*

t 801-727-4413

klong@newmarkmw.com

376 E. 400 S.

Suite 120

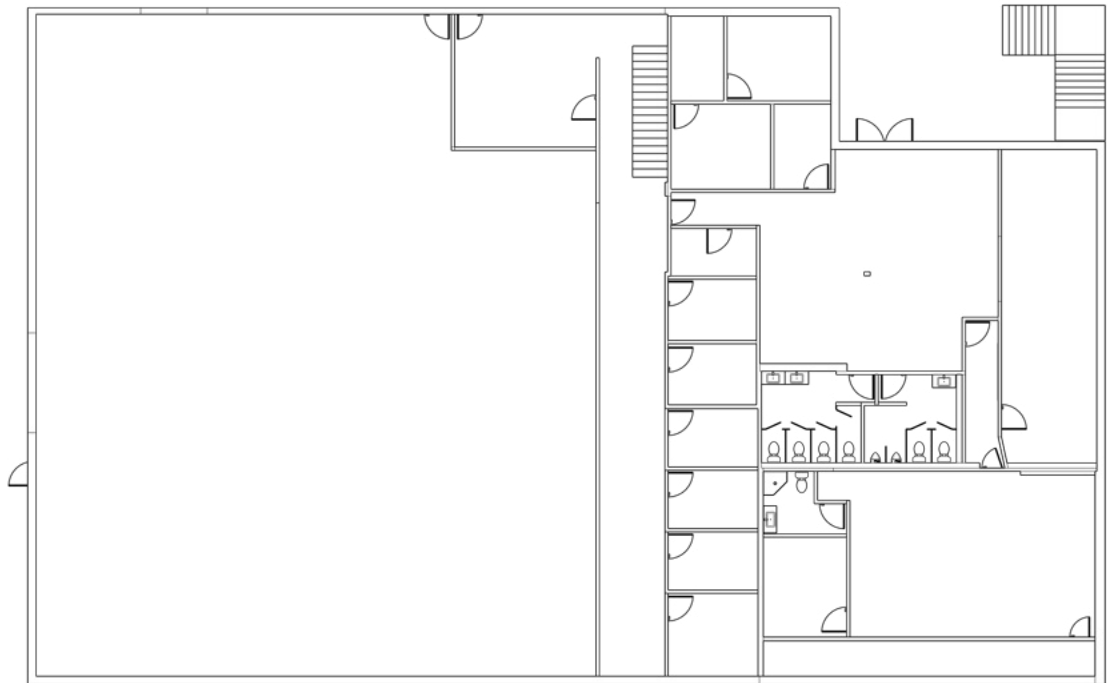
Salt Lake City, UT 84111

# NEWMARK

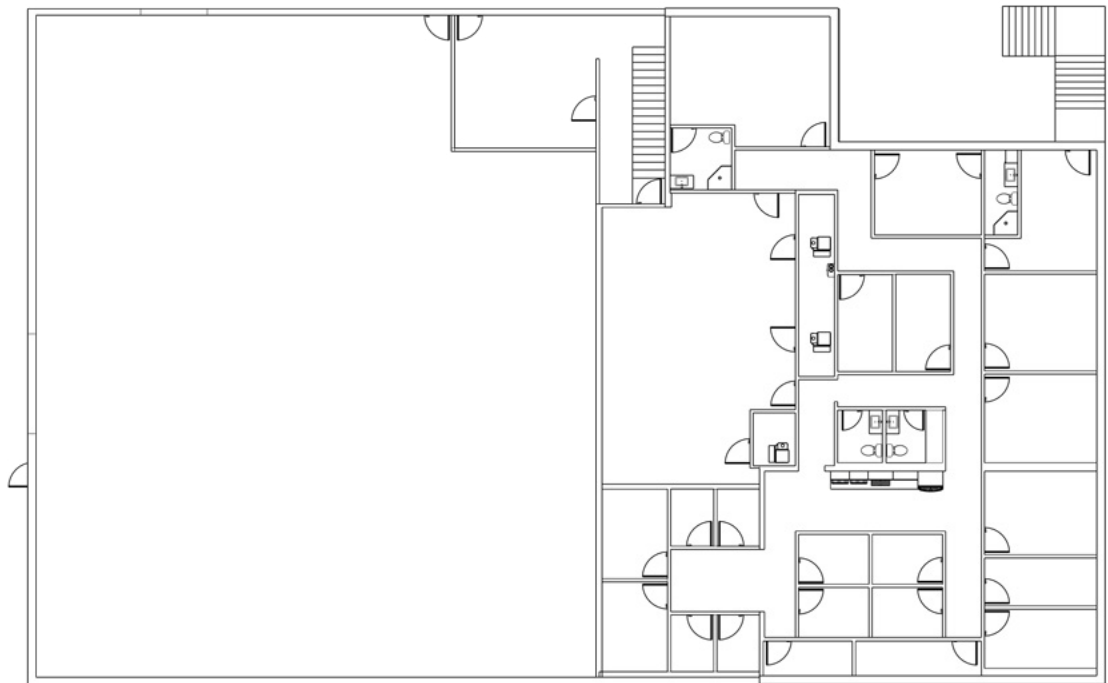
 MOUNTAIN WEST

The information contained herein has been obtained from sources deemed reliable but has not been verified and no guarantee, warranty or representation, either express or implied, is made with respect to such information. Terms of sale or lease and availability are subject to change or withdrawal without notice.

**MAIN  
LEVEL**



**SECOND  
LEVEL**



*For information, please contact:*

**Ben Richardson**

*Executive Managing Director*

t 801-746.4733

brichardson@newmarkmw.com

**Eli Priest**

*Senior Managing Director*

t 801-746-4746

epriest@newmarkmw.com

**Kolby Long**

*Associate*

t 801-727-4413

klong@newmarkmw.com

376 E. 400 S.

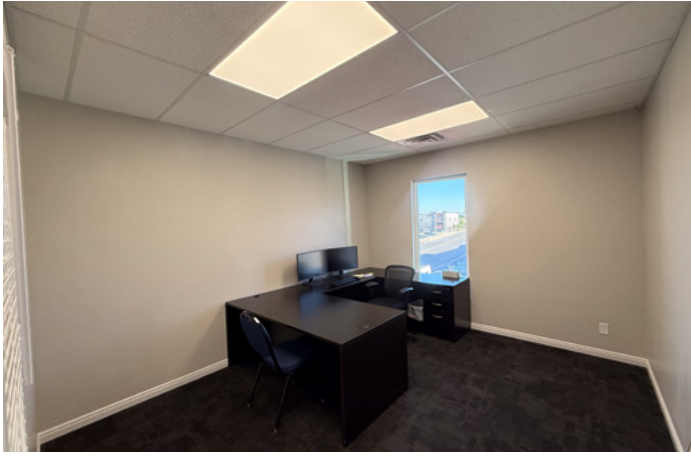
Suite 120

Salt Lake City, UT 84111

**NEWMARK**

 **MOUNTAIN WEST**

The information contained herein has been obtained from sources deemed reliable but has not been verified and no guarantee, warranty or representation, either express or implied, is made with respect to such information. Terms of sale or lease and availability are subject to change or withdrawal without notice.



*For information, please contact:*

**Ben Richardson**

*Executive Managing Director*

t 801-746.4733

brichardson@newmarkmw.com

**Eli Priest**

*Senior Managing Director*

t 801-746-4746

epriest@newmarkmw.com

**Kolby Long**

*Associate*

t 801-727-4413

klong@newmarkmw.com

376 E. 400 S.

Suite 120

Salt Lake City, UT 84111

**NEWMARK**

 **MOUNTAIN WEST**

The information contained herein has been obtained from sources deemed reliable but has not been verified and no guarantee, warranty or representation, either express or implied, is made with respect to such information. Terms of sale or lease and availability are subject to change or withdrawal without notice.



For information, please contact:

**Ben Richardson**  
 Executive Managing Director  
 t 801-746.4733  
 brichardson@newmarkmw.com

**Eli Priest**  
 Senior Managing Director  
 t 801-746-4746  
 epriest@newmarkmw.com

**Kolby Long**  
 Associate  
 t 801-727-4413  
 klong@newmarkmw.com

376 E. 400 S.  
 Suite 120  
 Salt Lake City, UT 84111



The information contained herein has been obtained from sources deemed reliable but has not been verified and no guarantee, warranty or representation, either express or implied, is made with respect to such information. Terms of sale or lease and availability are subject to change or withdrawal without notice.