

NorthTech Business Center I

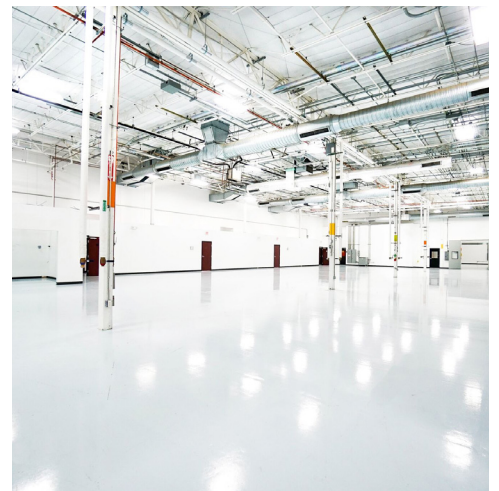
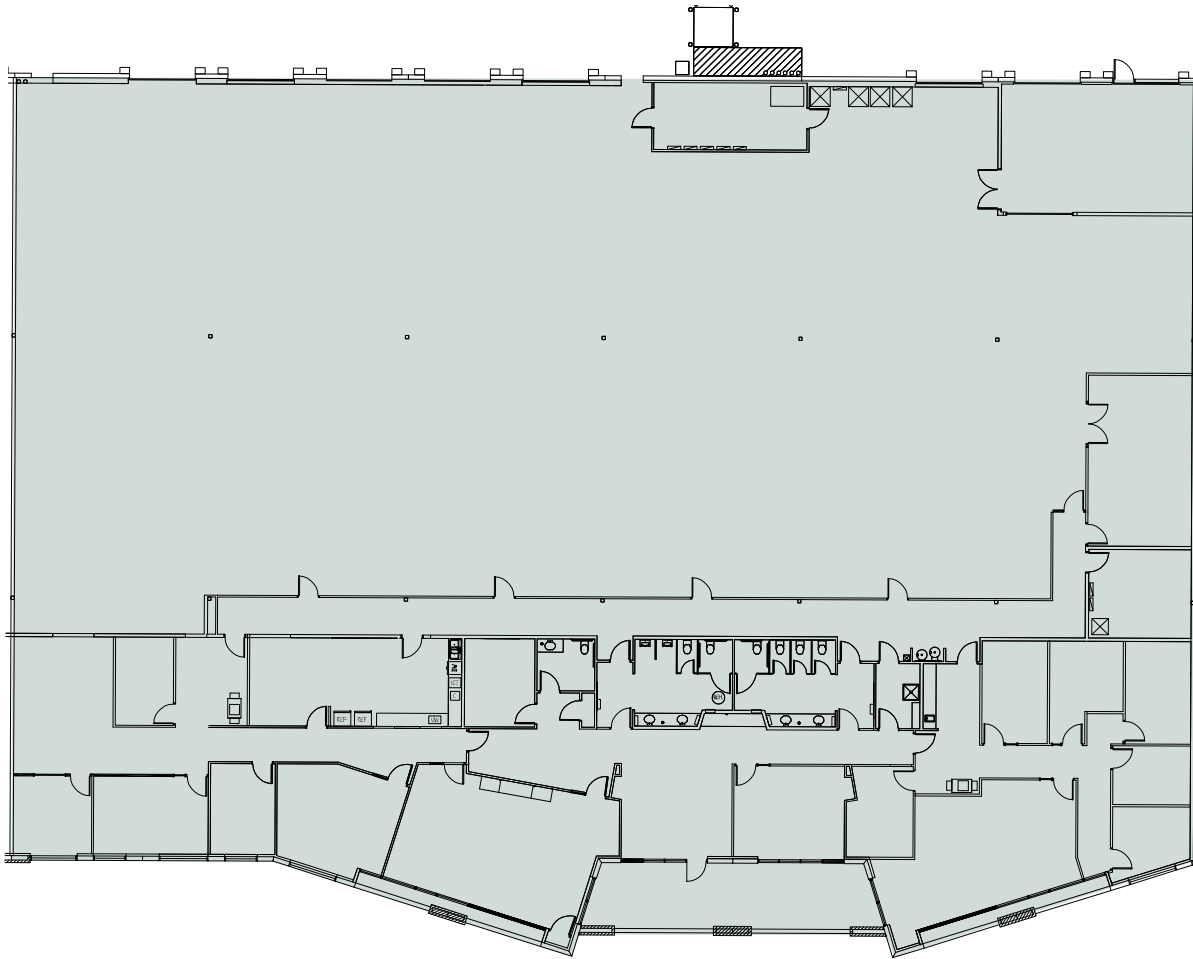
22,811 SF | Available for Sublease

4616 W Howard Ln, Suite 105,
Austin, TX. 78728



Floor Plan

Suite 105 - 22,811 SF

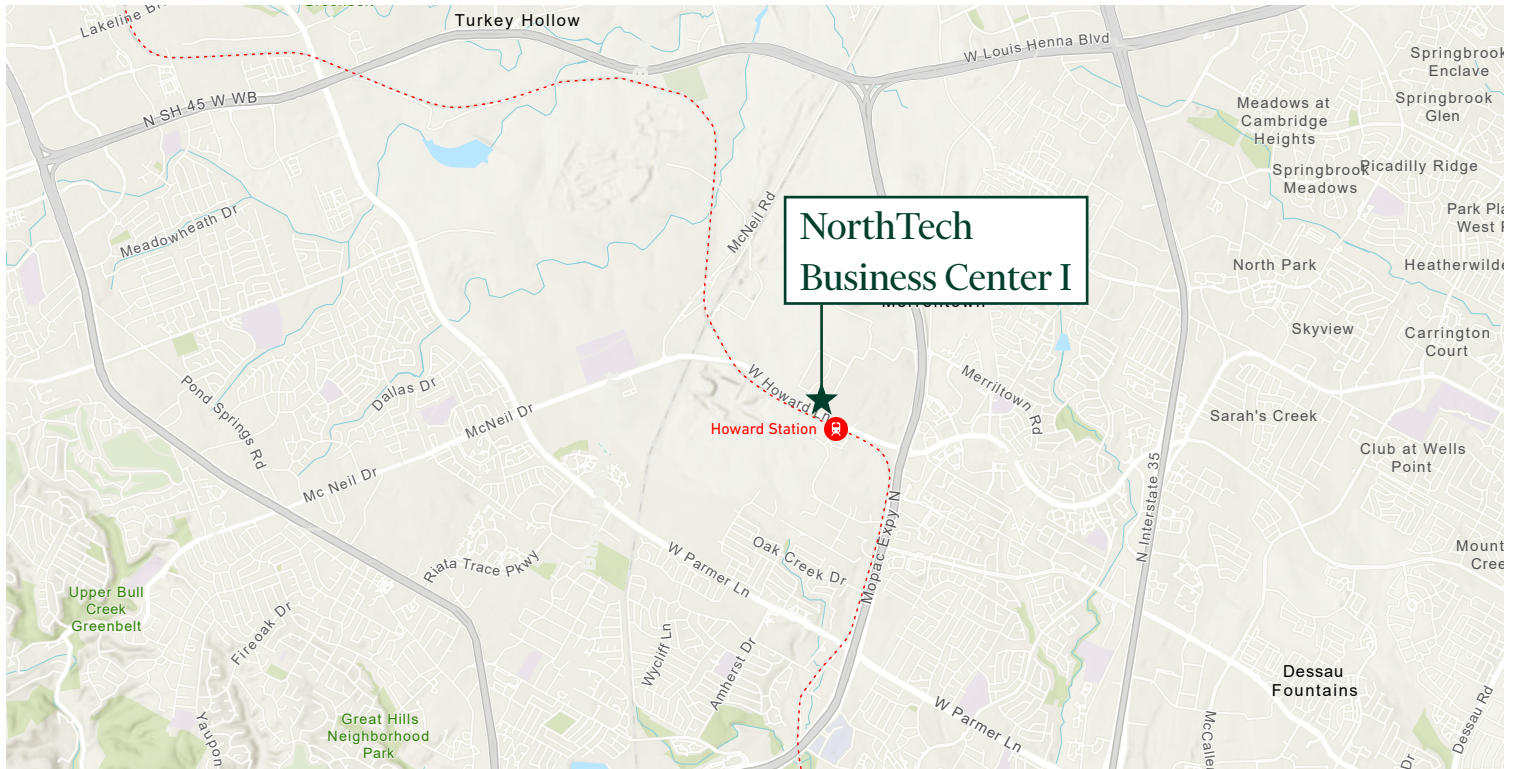


Suite 105

22,811 SF

Highlights

- + Sublease Expires: 1/31/2031
- + Rate: \$18.50 PSF
- + 2025 OpEx: \$8.99 PSF
- + 21' Clear Height
- + Column Spacing: 30'x40'
- + 35/65% Office-to-Warehouse Ratio
- + Loading: 2 Roll-Up Doors, can accommodate up to 6
- + Parking 3/1000
- + Power: 4,000 AMPS, 277/480V
- + Less than 10 minutes from Domain



Contact Us

JOHN BARKSDALE
Senior Vice President
+1 512 499 4976
john.barksdale@cbre.com

BO BEACHAM
Senior Vice President
+1 512 499 4978
bo.beacham@cbre.com

KYLE LEWIS
Senior Associate
+1 817 233 7121
kyle.lewis@cbre.com

PAIGE SUVALSKY
Associate
+1 713 249 7884
paige.suvalsky@cbre.com

© 2025 CBRE, Inc. All rights reserved. This information has been obtained from sources believed reliable, but has not been verified for accuracy or completeness. You should conduct a careful, independent investigation of the property and verify all information. Any reliance on this information is solely at your own risk. CBRE and the CBRE logo are service marks of CBRE, Inc. All other marks displayed on this document are the property of their respective owners, and the use of such logos does not imply any affiliation with or endorsement of CBRE. Photos herein are the property of their respective owners. Use of these images without the express written consent of the owner is prohibited.

