

# SOUTHWEST PLAZA

873 S Parker Street, Olathe, KS 66061

For  
LEASE

- Exceptional multi-tenant retail center
- Rent: \$9 per sqft
- NNN Lease
  - CAM: \$2.0 per sqft
  - Tax: \$1.5 per sqft
  - Insurance: \$0.5 sqft

For private viewing please call:

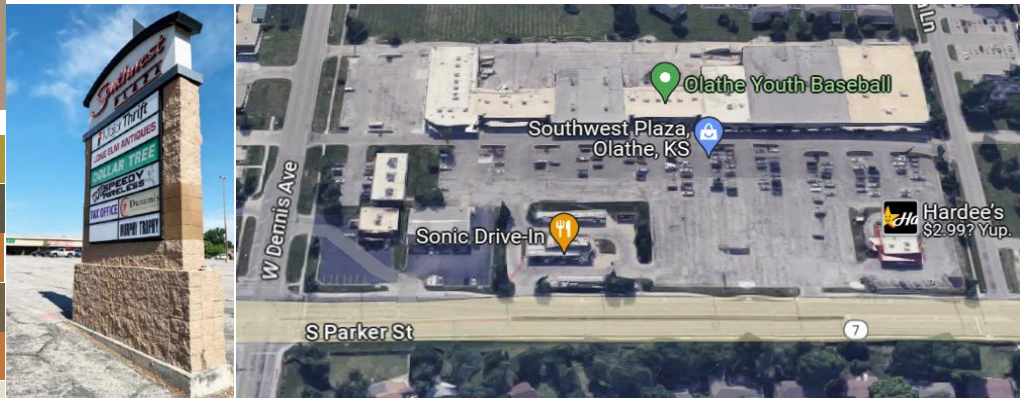
Amar Singh, Sales Agent

913-488-7632

amarsingh7@gmail.com



- Suite 873: 24,100 SQFT
  - Excellent for large retail, grocery store, event center, etc.
  - Rent: \$9 per sqft
- 96,422 SQFT shopping center
- Northwest Corner of Parker Street (K7 Highway) and Dennis Street.
- Busy retail center on K-7 Highway
- 20 Retail Units



Southwest Plaza is a 96,422 square foot neighborhood retail center located along the west side of Highway K-7/Parker Street in Olathe, Kansas. Anchored by Dollar Tree, Maj-R Thrift and Lone Elem Antiques, the Property is 95% occupied. It features excellent visibility, high traffic counts, and a service-based tenancy.

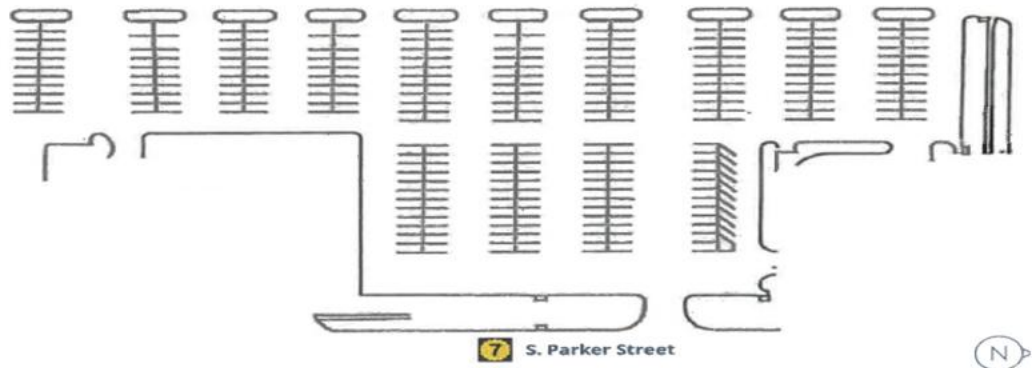
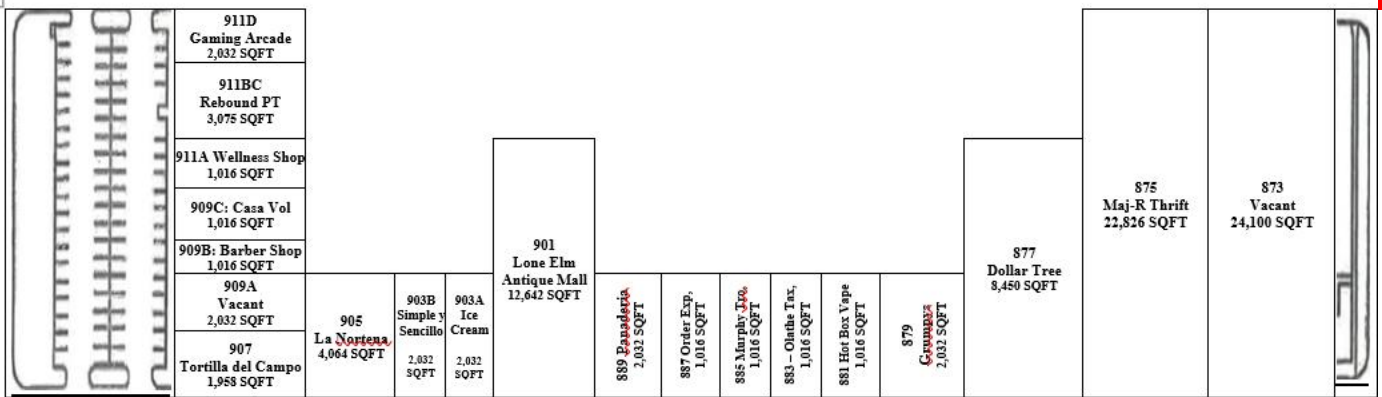


# SOUTHWEST PLAZA



# SOUTHWEST PLAZA

SITE PLAN



## Demographics

Population	1-mile	3-mile	5-mile	Households	1-mile	3-mile	5-mile	Income	1-mile	3-mile	5-mile
2010 Population	8,268	53,709	118,523	2010 Households	2,913	18,890	41,030	2022 Median Household Income	\$76,803	\$85,623	\$97,573
2022 Population	8,296	60,898	134,694	2022 Households	2,963	21,295	46,912	2022 Average Household Income	\$91,242	\$105,333	\$121,393
2027 Population (projected)	8,428	62,500	139,087	2027 Households (projected)	3,027	21,901	48,525	2022 Per Capita Income	\$32,836	\$36,827	\$42,296
2022 Daytime Population	8,619	61,606	129,912	2022 Average Household Size	2.74	2.81	2.82				