

# STATE STREET

NEIGHBORHOOD RETAIL CENTER



625 N. State St.  
Caro, MI 48723



**Retail Opportunity**  
up to 3,488 ± SF

**FOR LEASE**

# PROPERTY HIGHLIGHTS



## Description

Become part of a growing retail lineup alongside AT&T, Wild Bill's Tobacco and Next Level Chiropractic & Wellness in this thriving Caro shopping center. Located along the main thoroughfare, the property features outstanding visibility, easy access, ample parking, and pylon signage opportunities. Space is available for lease in this well-positioned and high-traffic location.

## Address

625 N. State St.  
Caro, MI 48723

## Asking Rent

Contact Broker

## Features

- Up to 3,488 ± SF Available
- Pylon Signage Available
- Multiple Curb Cuts
- Ample Parking
- B2 Zoning - General Business District

## Traffic Counts

N State St- 8,050+ cpd  
Ellington St - 5,410+ cpd

## Demographics

	3 MILE	5 MILES	7 MILES
POPULATION:	7,589	9,371	12,300
HOUSEHOLDS:	3,244	3,978	5,164
AVG. HOUSEHOLD INCOME:	\$69,883	\$71,820	\$74,532
DAYTIME POPULATION:	7,547	8,840	10,160

## Trade Area Tenants



The information contained herein has been obtained through sources deemed reliable by On Q Commercial Real Estate but cannot be guaranteed for its accuracy. We recommend to the buyer or lessee that any information, which is of special interest, should be obtained through independent verification. ALL MEASUREMENTS ARE APPROXIMATE.

# FLOOR PLAN



N. STATE ST.

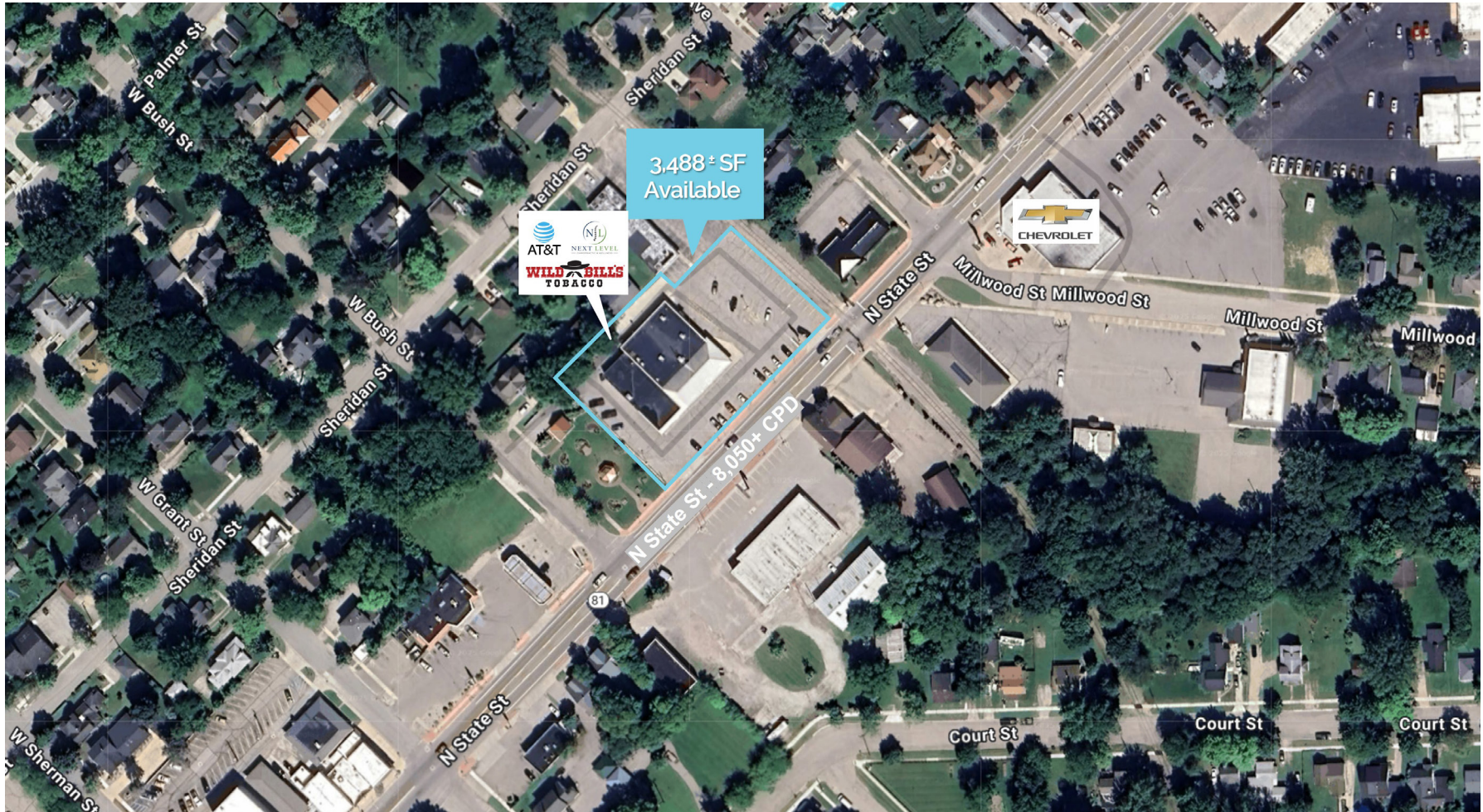
Storefront parking

Parking Lot



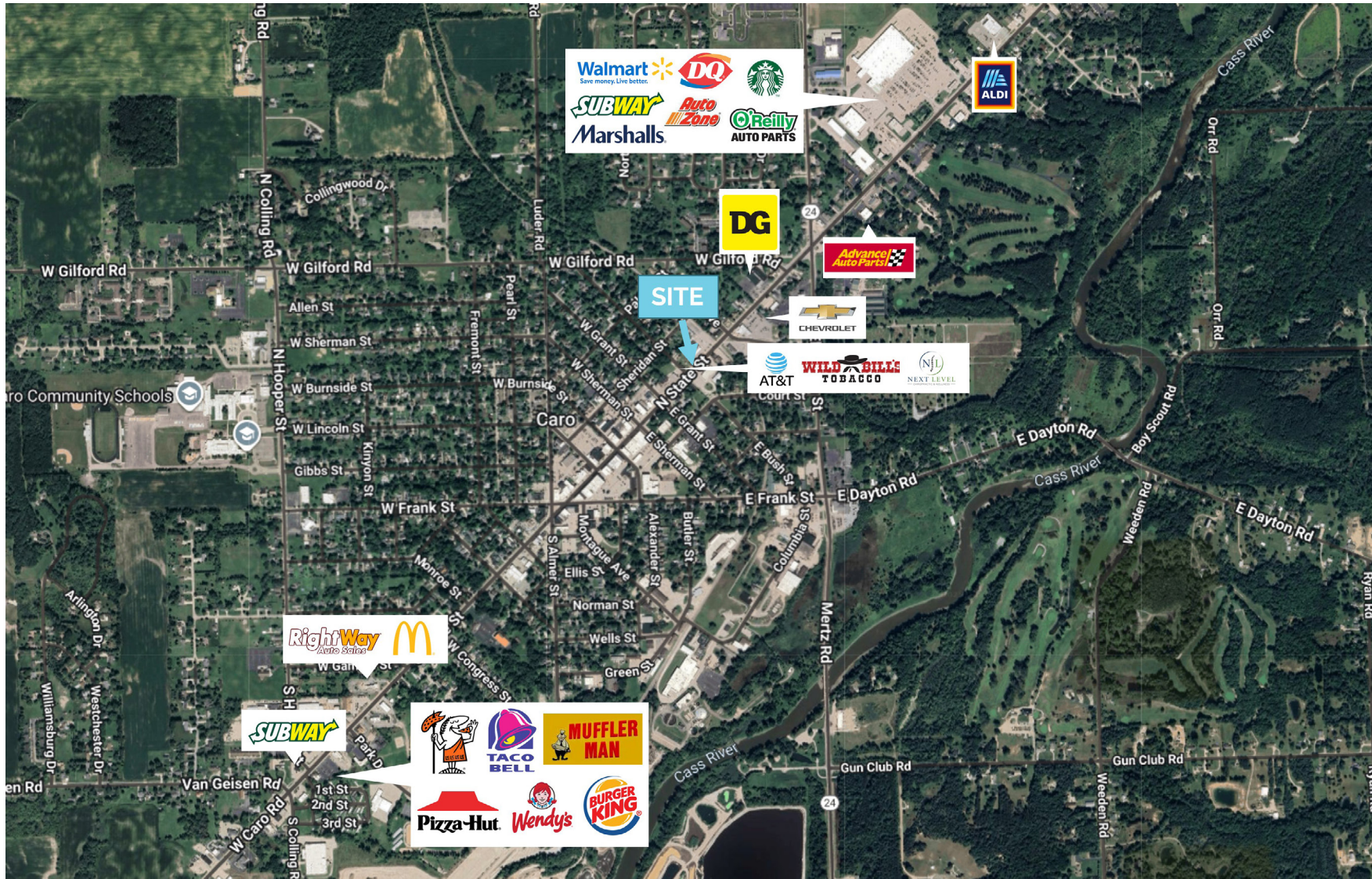
The information contained herein has been obtained through sources deemed reliable by On Q Commercial Real Estate but cannot be guaranteed for its accuracy. We recommend to the buyer or lessee that any information, which is of special interest, should be obtained through independent verification. ALL MEASUREMENTS ARE APPROXIMATE.

# MICRO AERIAL



The information contained herein has been obtained through sources deemed reliable by On Q Commercial Real Estate but cannot be guaranteed for its accuracy. We recommend to the buyer or lessee that any information, which is of special interest, should be obtained through independent verification. ALL MEASUREMENTS ARE APPROXIMATE.

# MACRO AERIAL



The information contained herein has been obtained through sources deemed reliable by On Q Commercial Real Estate but cannot be guaranteed for its accuracy. We recommend to the buyer or lessee that any information, which is of special interest, should be obtained through independent verification. ALL MEASUREMENTS ARE APPROXIMATE.

# PHOTOS



The information contained herein has been obtained through sources deemed reliable by On Q Commercial Real Estate but cannot be guaranteed for its accuracy. We recommend to the buyer or lessee that any information, which is of special interest, should be obtained through independent verification. ALL MEASUREMENTS ARE APPROXIMATE.



OnQ  
COMMERCIAL  
REAL ESTATE

**JOE QONJA**

Principal Broker

C: (248) 977-7799

O: (248) 712-3300

E: [joe@onqcre.com](mailto:joe@onqcre.com)

**LEO ALLUS**

Associate

C: (248) 321-3325

O: (248) 712-3300

E: [leo@onqcre.com](mailto:leo@onqcre.com)

100 W. Long Lake Rd. Suite 122 Bloomfield Hills, MI 48304

[www.onqcre.com](http://www.onqcre.com)

The information contained herein has been obtained through sources deemed reliable by On Q Commercial Real Estate but cannot be guaranteed for its accuracy. We recommend to the buyer or lessee that any information, which is of special interest, should be obtained through independent verification. ALL MEASUREMENTS ARE APPROXIMATE.