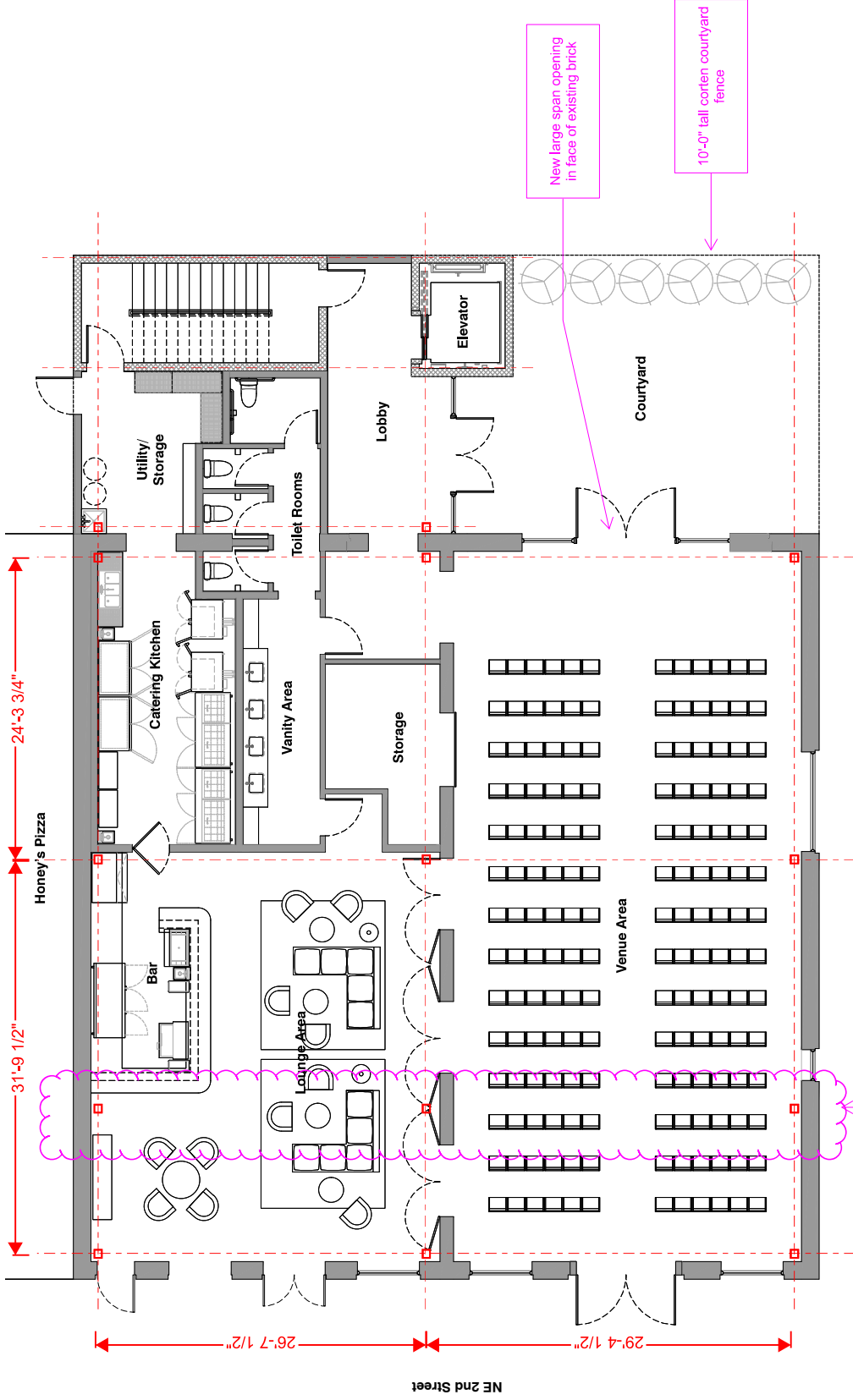


The One Smithville

STRUCTURAL ENGINEER PACKAGE

EXISTING ← → NEW ADDITION



New large span opening in face of existing brick

10'-0" tall corten courtyard fence

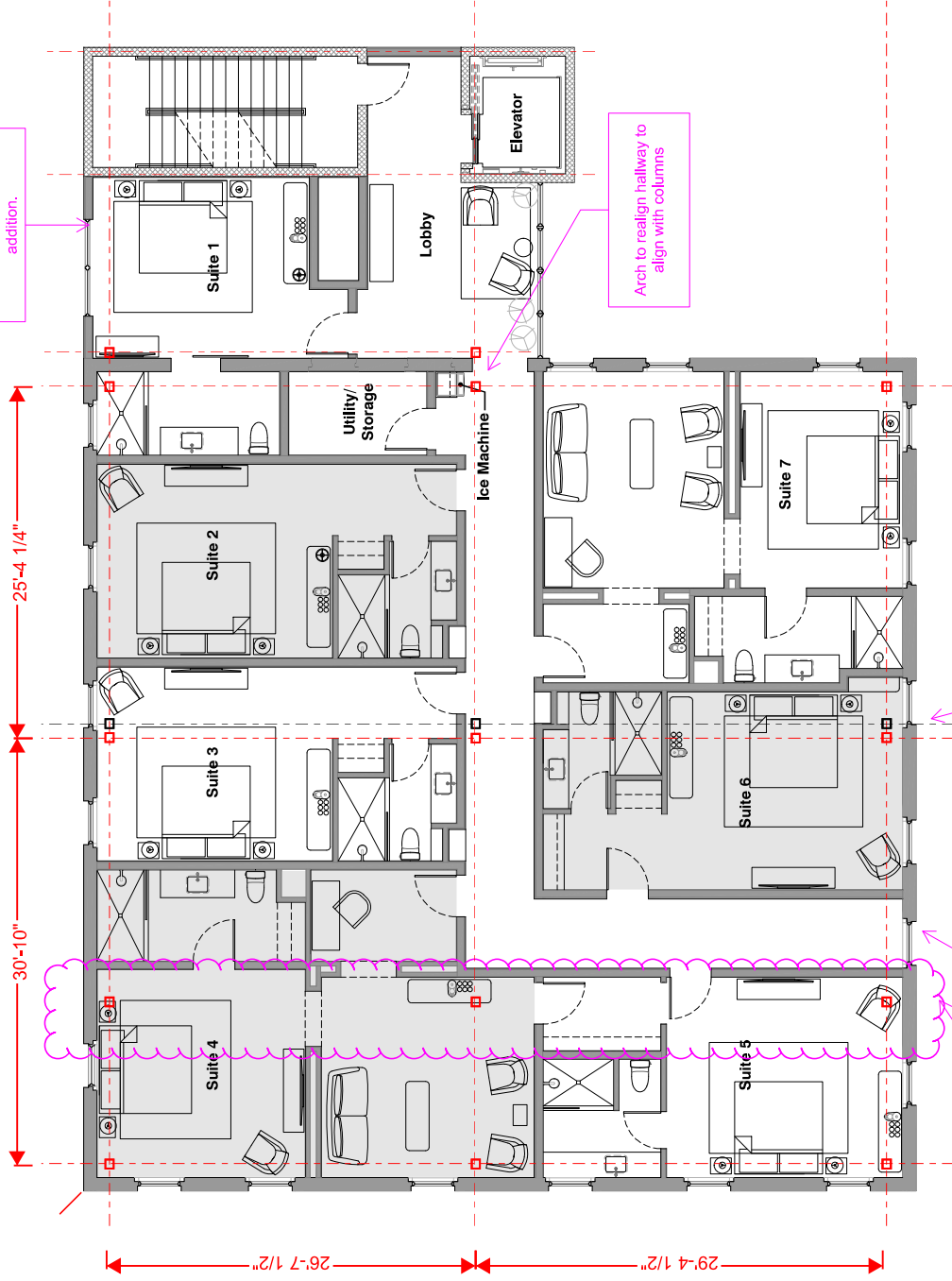
Note: we'd prefer not to have this column line but if 31'-9 is pushing it we can live w/ this

LEVEL 1 UPDATED FLOOR PLAN

Scale 1/8" = 1'-0"



It'd also be helpful if you could include any type of notes or markups to capture some of the miscellaneous steel that will be required for the brick facade of the addition.



Arch to realign hallway to align with columns

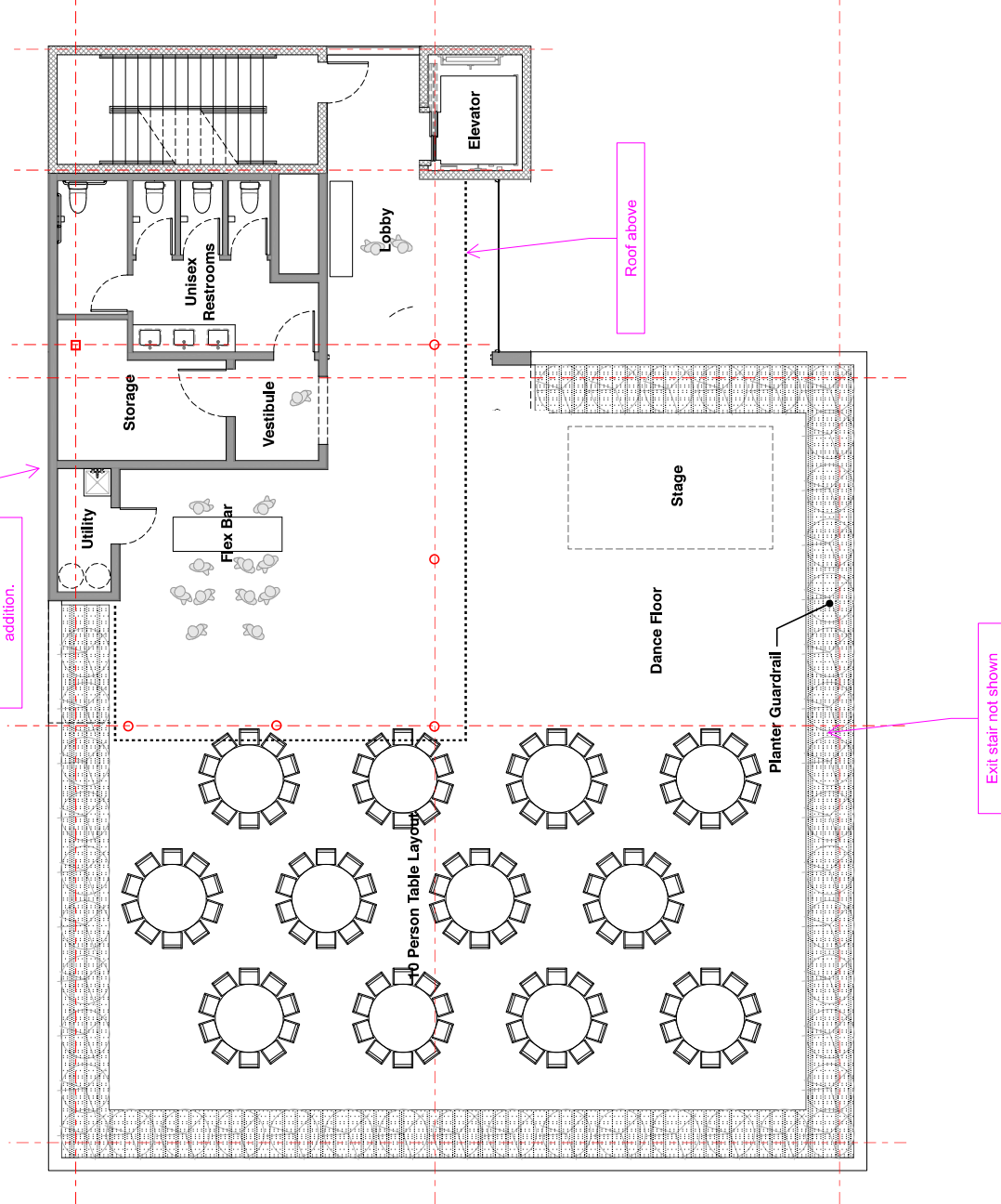
Transfer at Level 1/2

Exterior exit not shown

Note: we'd prefer not to have this column line but if 31'-9" is pushing it we can live with this

LEVEL 2 & 3 UPDATED FLOOR PLAN

It'd also be helpful if you could include any type of notes or markups to capture some of the miscellaneous steel that will be required for the brick facade of the addition.



ROOF DECK WITH FLEXIBLE BAR

The One Smithville
111 NE 2nd Street, Smithville TX 78701

