

10

Test Dr

137th Ave

±20,000 - ±25,000 SF
Available

For Sublease

13685 W. Test Drive, Goodyear

100%
AIR-CONDITIONED WAREHOUSE

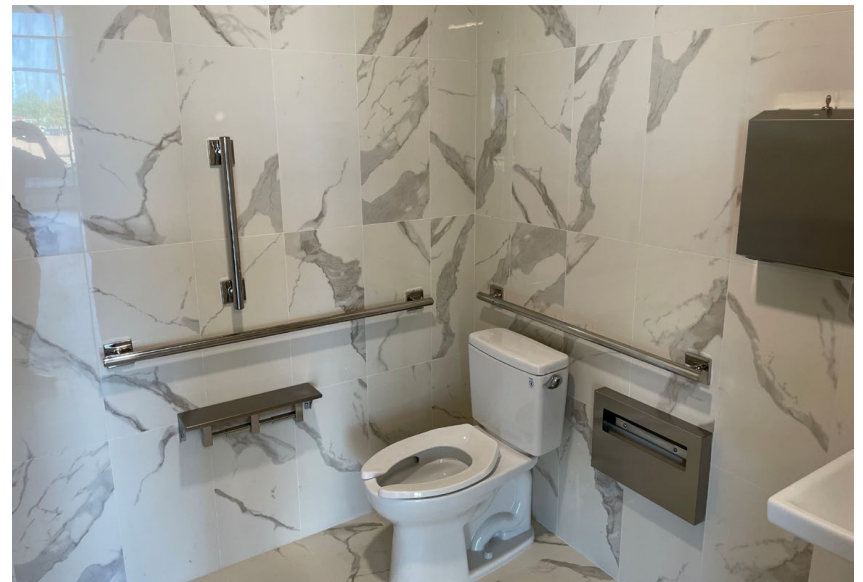
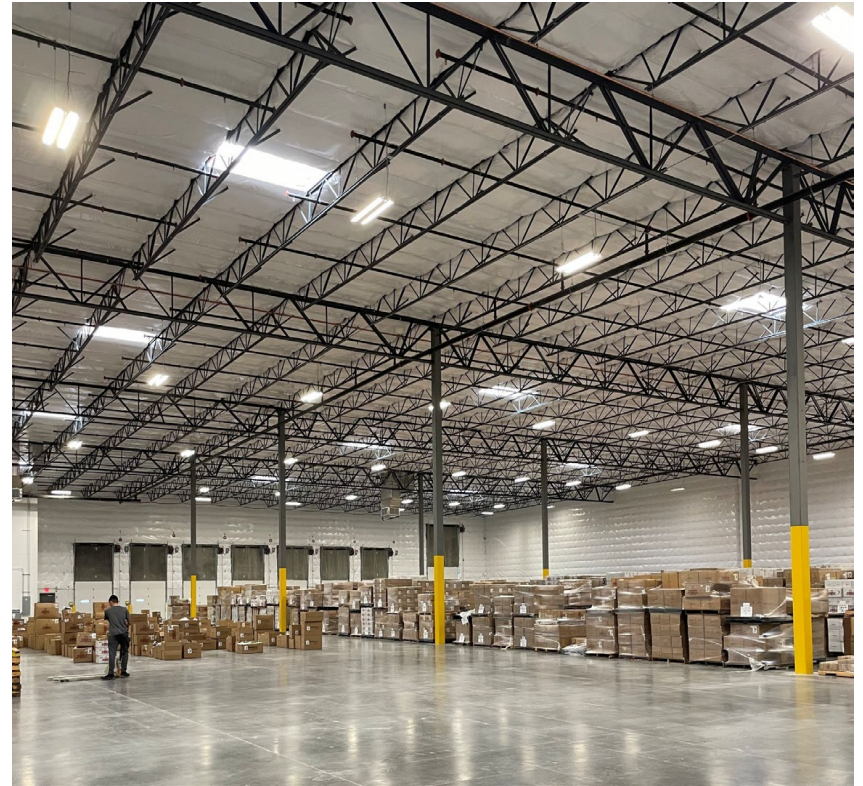


Jones Lang LaSalle Americas, Inc.
License #: CO508577000



BUILDING HIGHLIGHTS

- ± 95,350 SF building
- ±20,000 to ±25,000 SF available
- ESFR sprinkler system
- Air-conditioned warehouse
- PAD, City of Goodyear
- Column dimensions: 45' x 54'
- 5 dock high doors with pit levelers
- All doors sealed and electronic
- Gated truck court
- 100% concrete truck court
- Approximately 0.4 miles to the Litchfield Road and I-10 Interchange
- Approximately 25 minutes to Phoenix Sky Harbor International Airport

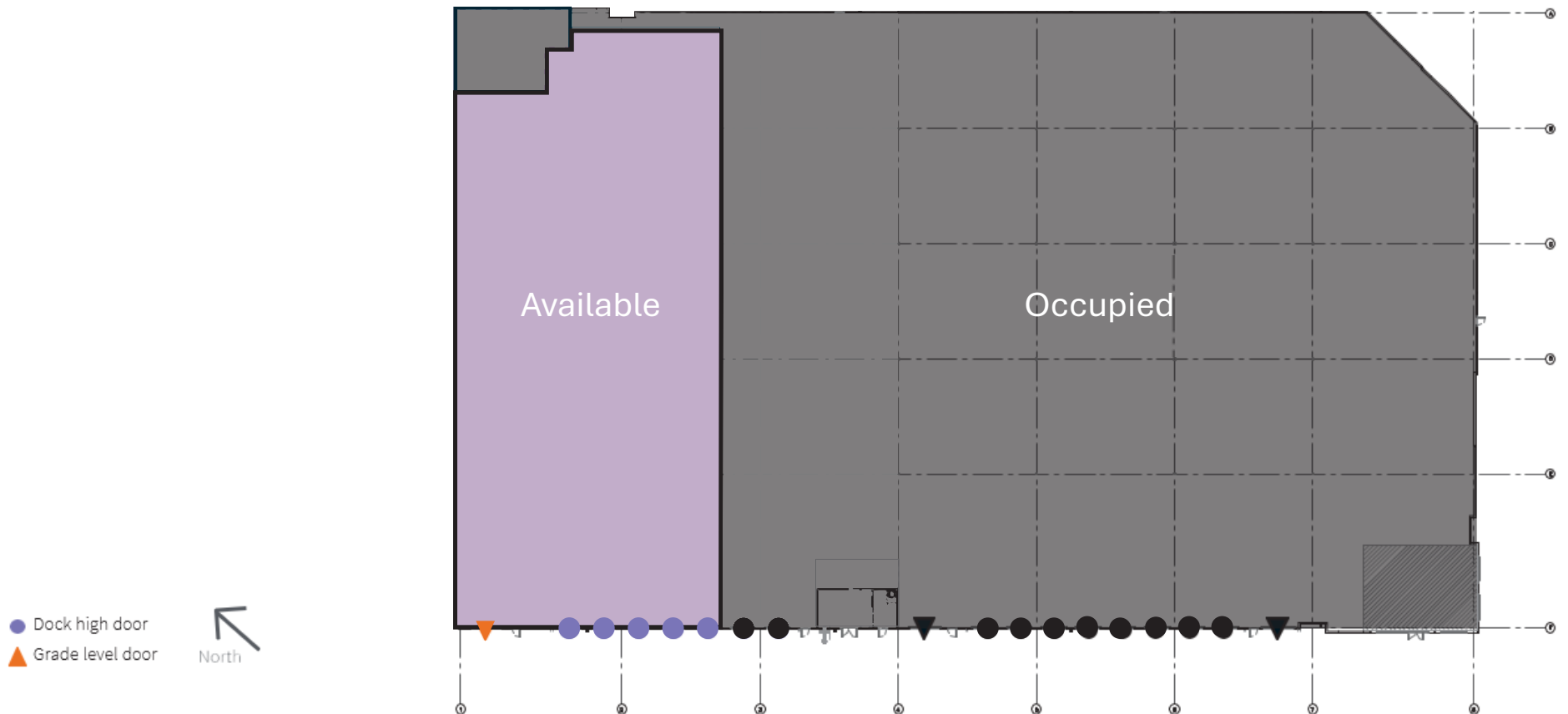


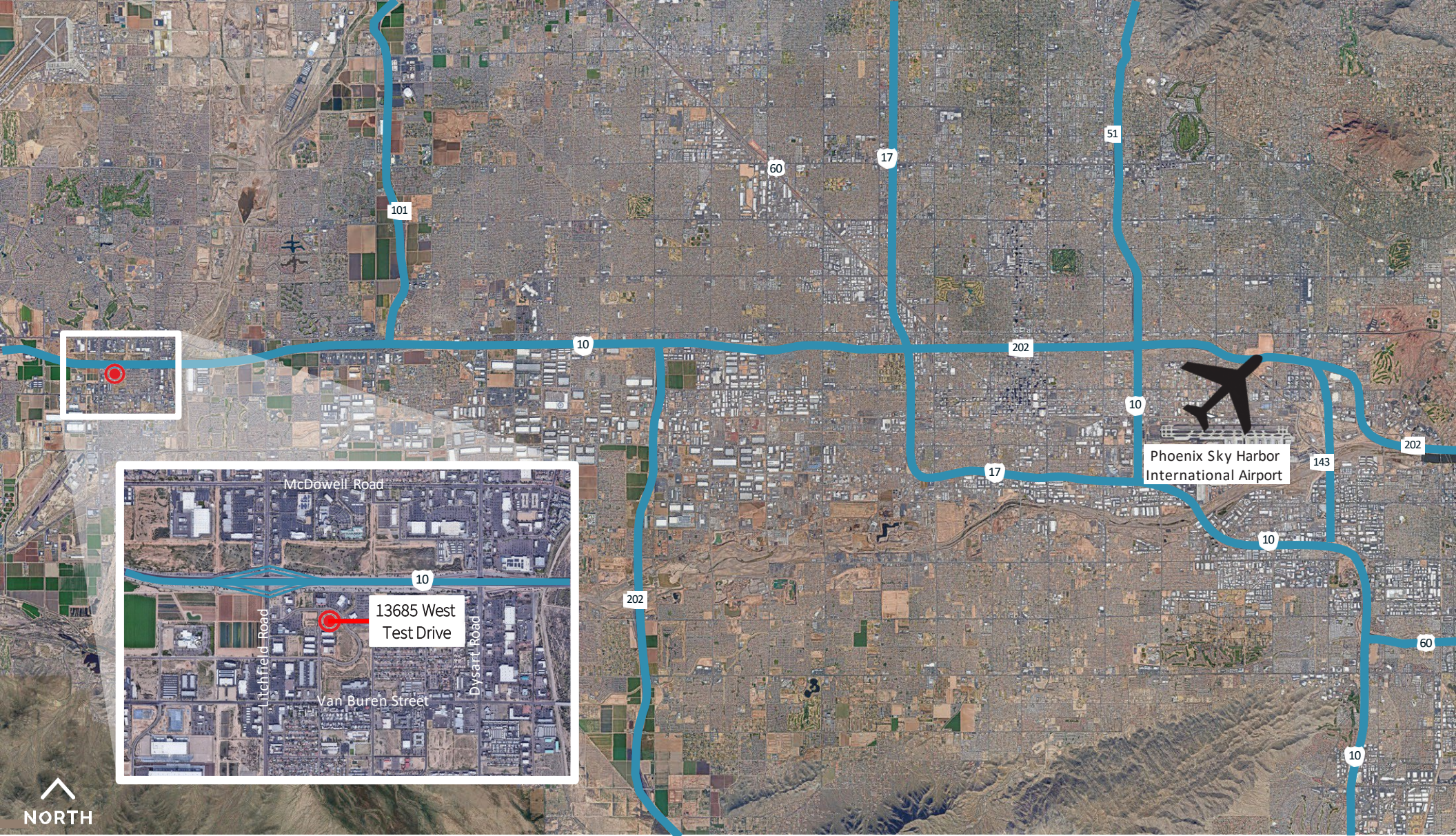
FLOORPLAN

WAREHOUSE
100% Air-Conditioned

Extras at no additional cost:

- 150+ Cameras inside and outside
- Facial Recognition and Cameras at all entry points
- Phone Camera access for Remote viewing
- Automatic Pit Levelers
- Automatic Dock Doors with Remote control Open Close for offsite open and close
- Time controlled Closed truck yard with automatic Gates
- Fully insulated building maintains inside temperatures reducing AC Usage.
- Owner upgraded restrooms
- Low opex of \$.15 nnn's





For additional information:

Steve Sayre
Senior Managing Director
+1 602 999 7720
steve.sayre@jll.com



Although information has been obtained from sources deemed reliable, neither Owner nor JLL makes any guarantees, warranties or representations, express or implied, as to the completeness or accuracy as to the information contained herein. Any projections, opinions, assumptions or estimates used are for example only. There may be differences between projected and actual results, and those differences may be material. The Property may be withdrawn without notice. Neither Owner nor JLL accepts any liability for any loss or damage suffered by any party resulting from reliance on this information. If the recipient of this information has signed a confidentiality agreement regarding this matter, this information is subject to the terms of that agreement. ©2025 Jones Lang LaSalle IP, Inc. All rights reserved.