



Grant - Murray
REAL ESTATE, LLC
COMMERCIAL AND INVESTMENT BROKERAGE

150 N. McPherson Church Rd
Fayetteville, NC 28303
www.grantmurrayre.com



OFFICE BUILDING FOR LEASE

OFFICE BUILDING DOWNTOWN 310 Dick St , Fayetteville, NC 28301

for more information

SUSAN EVANS

Broker

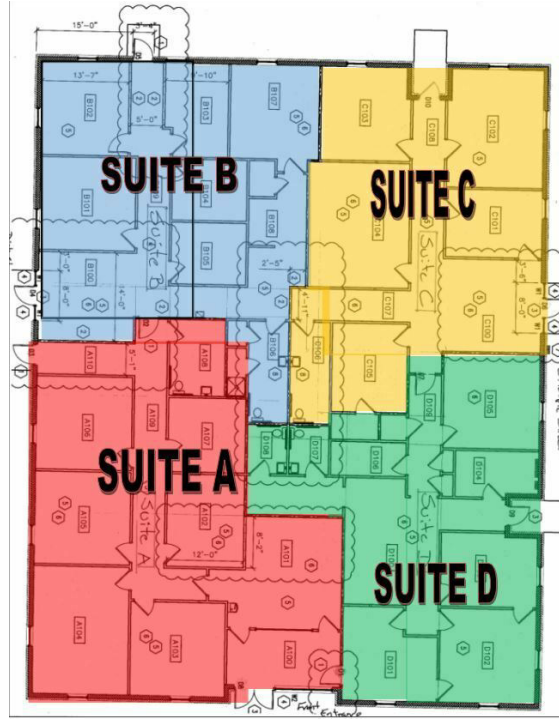
O: 910.829.1617 x208

C: 919.920.2140

susan@grantmurrayre.com



EXECUTIVE SUMMARY



OFFERING SUMMARY

Available SF: 2,200 SF

Lease Rate: \$ 2,900- Suite B

Lease Type: Full Service Lease

Lot Size: 0.72 Acres

Building Size: 8,000

Zoning: OI

Market: Downtown Fayetteville

PROPERTY OVERVIEW

310 Dick Street is a large beautiful brick building located in downtown Fayetteville. This building has recently been remodeled with New Roof, carpet, paint and HVAC. The site has an abundance of parking. It is accessible from Gillespie and Dick Streets. It is located near the courthouse and all downtown amenities. You will be tenants with several government and attorney offices on Dick Street. The building has a total of 4 large private office suites, which can be leased individually or combined. Each suite has their own private entrance, restrooms, etc. The rents include utilities and NNN charges.

AVAILABLE SPACES

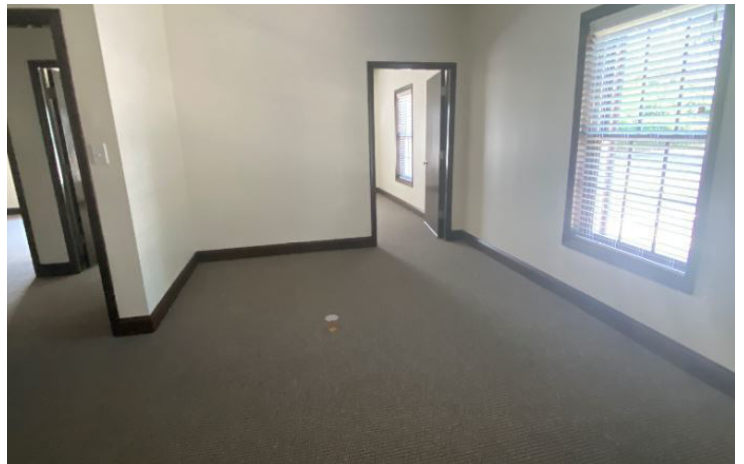
SPACE	LEASE RATE	SIZE (SF)
310 Dick St - Suite B	\$2,900 per month	2,200 SF

for more information

SUSAN EVANS
 Broker
 O: 910.829.1617 x208
 C: 919.920.2140
 susan@grantmurrayre.com



ADDITIONAL PHOTOS



for more information

SUSAN EVANS

Broker

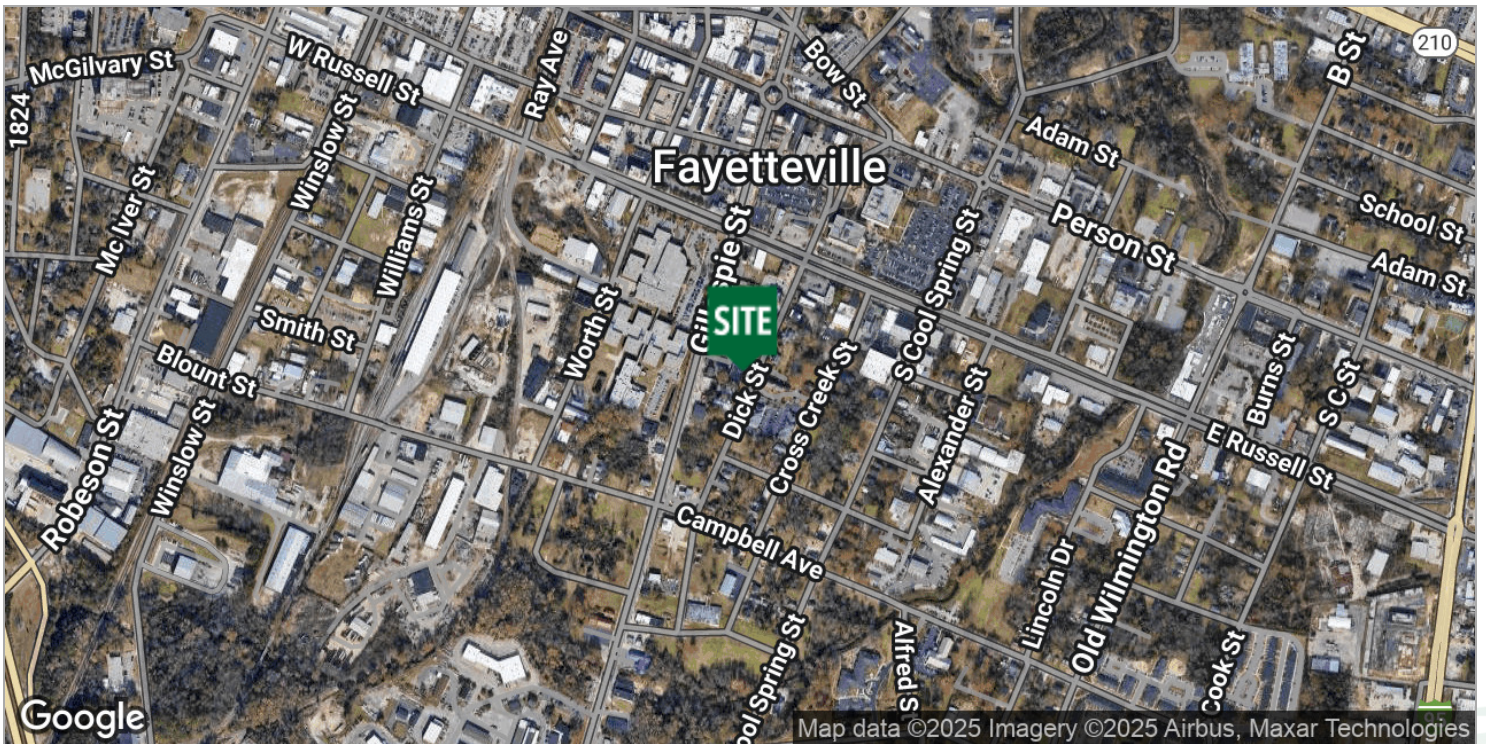
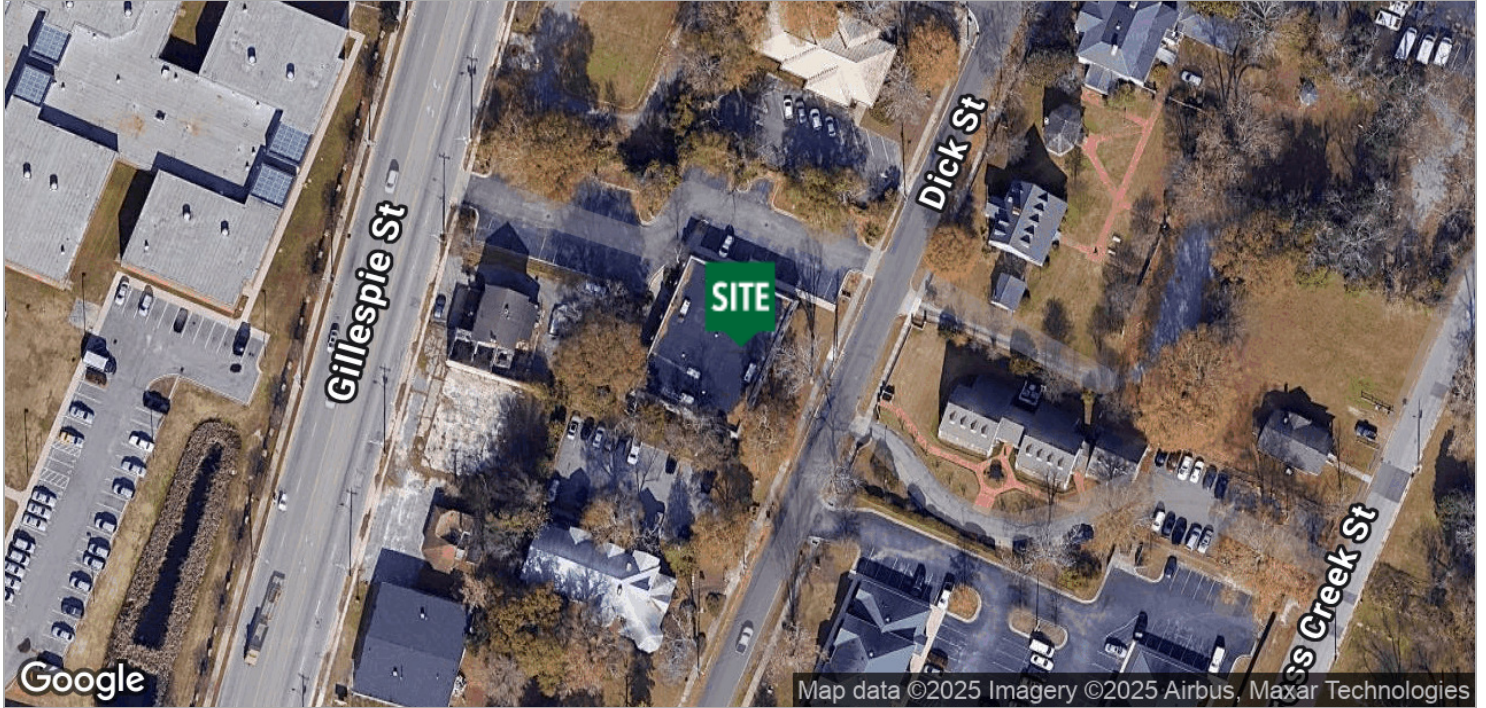
O: 910.829.1617 x208

C: 919.920.2140

susan@grantmurrayre.com



LOCATION MAPS



for more information

SUSAN EVANS

Broker

O: 910.829.1617 x208

C: 919.920.2140

susan@grantmurrayre.com



RETAILER MAP



for more information

SUSAN EVANS
 Broker
 O: 910.829.1617 x208
 C: 919.920.2140
 susan@grantmurrayre.com

Map data ©2025 Imagery ©2025 Airbus, Maxar Technologies