

Price Reduced!



**9532 Wynlakes Place
Montgomery, AL 36117**

FOR SALE

Income Producing Property!

Sale Price \$890,000.00
Cap Rate 8.2%
Building Size +/- 6,300 S.F.
Land Size +/- 21,307 S.F.
Zoning O-1 (Office)
Parking Plenty On-Site
Accessibility & Visibility Excellent
Listing Type Exclusive

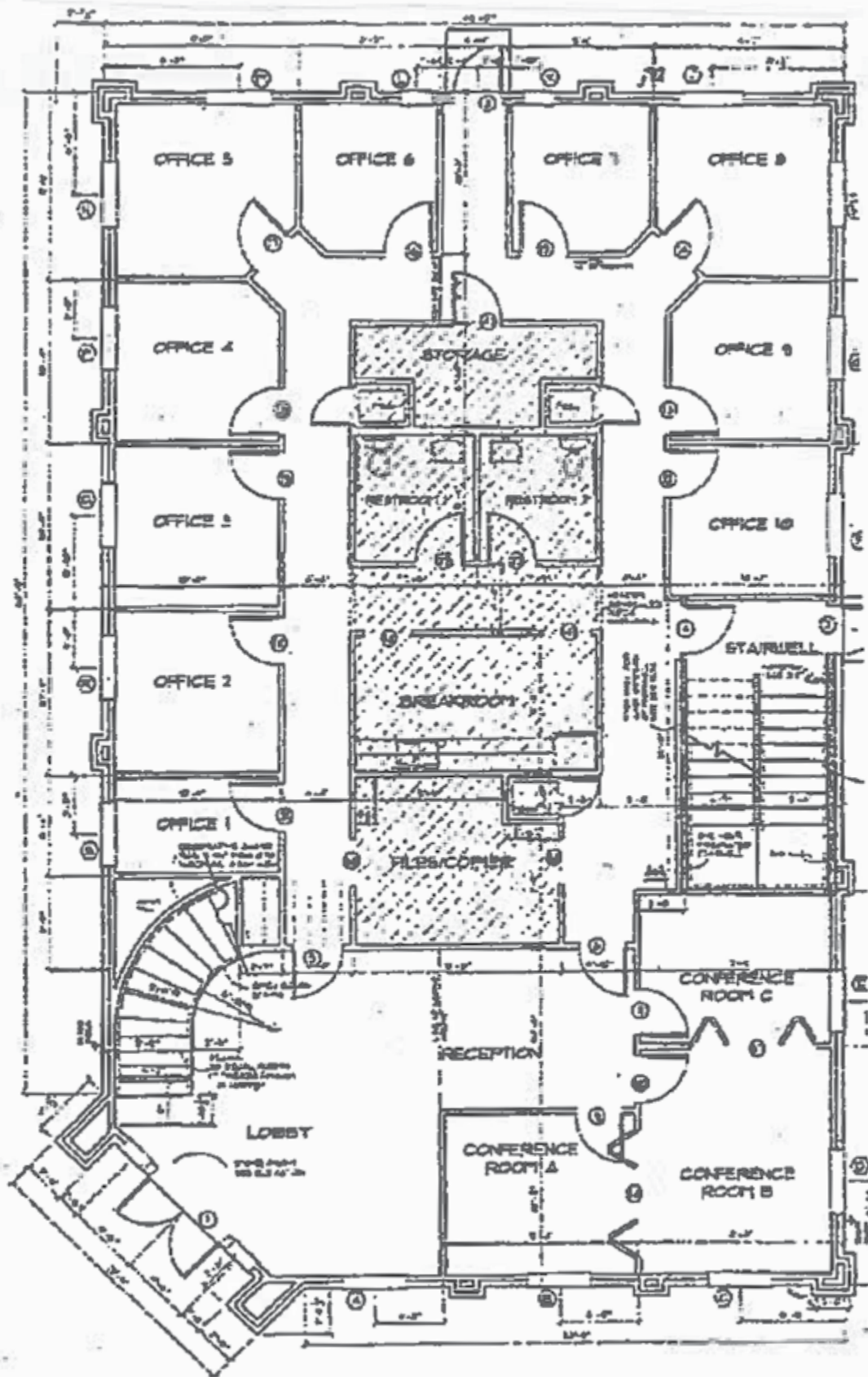
Outstanding fully-leased office building located at the corner of Vaughn Road and Wynlakes Place. Great investment property with very little landlord responsibilities! There is an 8.2% cap rate on current rent. Rent increases 2.5% each year. Building contains approximately 6,300 S.F. of finished office space. Contact Lee Meriwether, CCIM, for more information at (334) 398-1808.



Lee W. Meriwether, CCIM
John Stanley & Associates, Inc.
4747 Woodmere Blvd. ■ Montgomery, AL 36106
(334) 271-2475 voice ■ (334) 398-1808 cell
(334) 271-2421 fax
lmeriwether@johnstanleyassociates.com
www.johnstanleyassociates.com





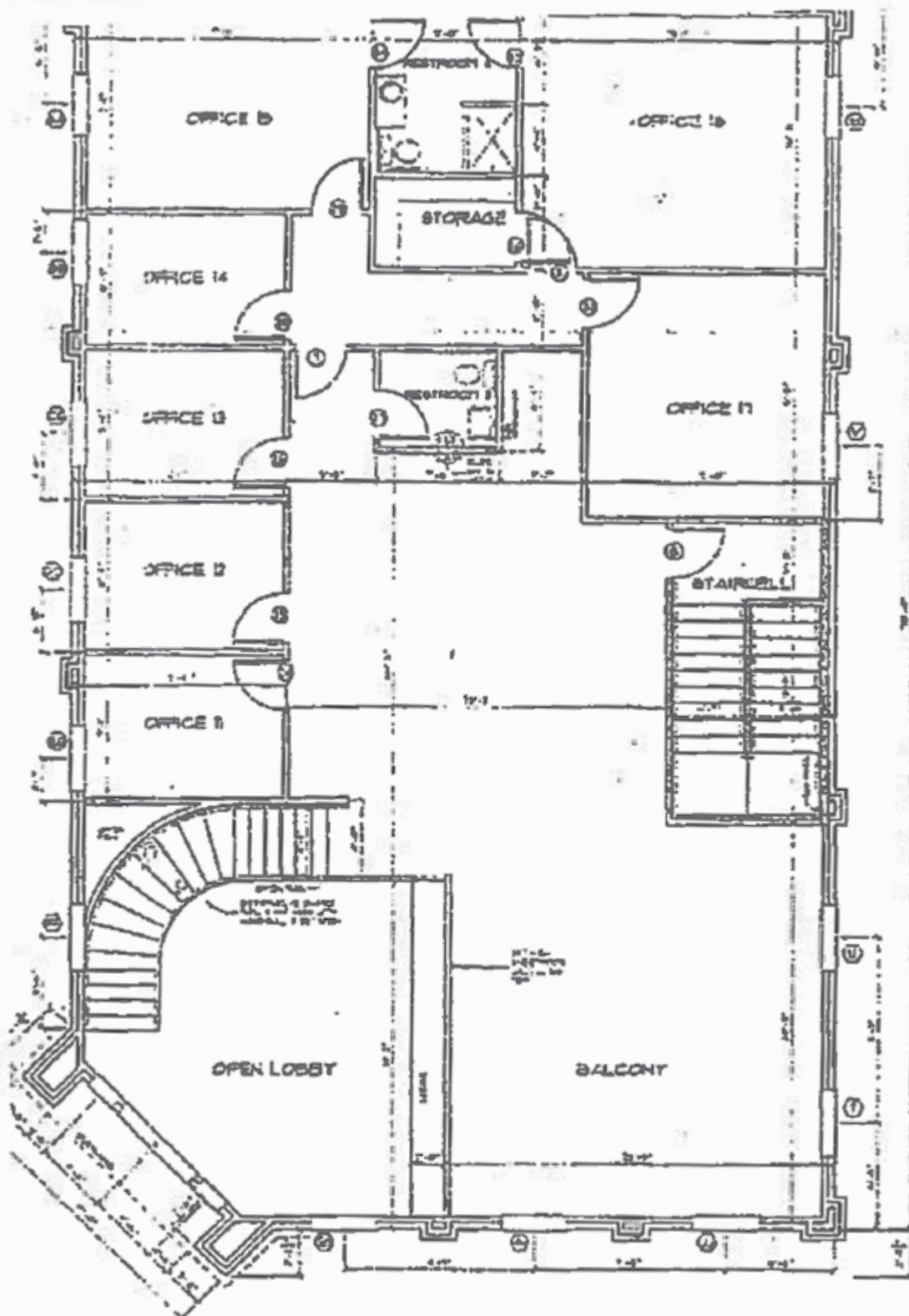


FIRST FLOOR PLAN

SCALE: 1/4" = 1'-0"



JOHN STANLEY
&
ASSOCIATES



SECOND FLOOR PLAN

SCALE: 1/4" = 1'-0"

9'-0" CEILINGS - UNLESS OTHERWISE NOTED



JOHN STANLEY
&
ASSOCIATES