

# 284

## DYCKMAN STREET INWOOD, NYC

Corner of Dyckman & Henshaw Streets

RETAIL FOR LEASE

### APPROXIMATE SIZE

Ground Floor: 16,000 SF  
Mezzanine: 8,000 SF  
Total: 24,000 SF

### ASKING RENT

Ground Floor: \$45 PSF  
Mezzanine: \$20 PSF

### POSSESSION

Arranged

### TERM

10-20 Years

### FRONTAGE

130 FT Wraparound

### COMMENTS

- Standalone building ready for Tenant fit-out
- Plain vanilla shell with storefront, as well as a Market TIA Package
- 16,000 SF rooftop amenity possibility
- Wraparound glass windows
- High ceilings
- Flagship opportunity
- Ideal for fitness concepts; all uses considered

### NEIGHBORS

Cloister Grill • LAZ Parking • Bravo 56 NYC • Pat'e Palo Bar & Grill • Mamajuana Café Inwood • Tabu • Il Sole • Tryon Public House • Starbucks • Kuro Kirin Espresso & Bar • Planet Fitness • The Trie Café

### TRANSPORTATION



### JAMES FAMULARO

President  
646.658.7373  
jfamularo@meridiancapital.com

### KYLE FINK

Senior Associate  
212.468.5980  
kfink@meridiancapital.com

### JOAQUIN CARRILLO

Associate  
212.468.5919  
jcarrilo@meridiancapital.com

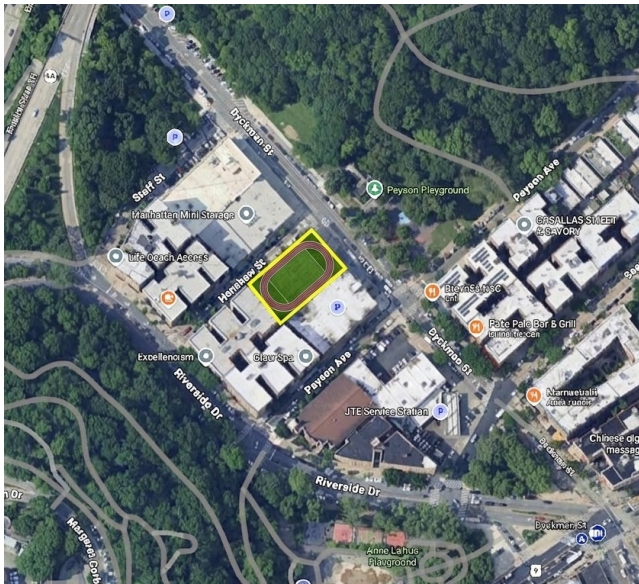


CONCEPTUAL RENDERING



**MERIDIAN**  
RETAIL LEASING

All information supplied is from sources deemed reliable and is furnished subject to errors, omissions, modifications, removal of the listing from sale or lease, and to any listing conditions, including the rates and manner of payment of commissions for particular offerings imposed by Meridian Capital Group. This information may include estimates and projections prepared by Meridian Capital Group with respect to future events, and these future events may or may not actually occur. Such estimates and projections reflect various assumptions concerning anticipated results. While Meridian Capital Group believes these assumptions are reasonable, there can be no assurance that any of these estimates and projections will be correct. Therefore, actual results may vary materially from these estimates and projections. Any square footage dimensions set forth are approximate.



RENDERINGS

ACTUAL SPACE

**JAMES FAMULARO**  
 President  
 646.658.7373  
 jfamularo@meridiancapital.com

**KYLE FINK**  
 Senior Associate  
 212.468.5980  
 kfink@meridiancapital.com

**JOAQUIN CARRILLO**  
 Associate  
 212.468.5919  
 jcarrilo@meridiancapital.com

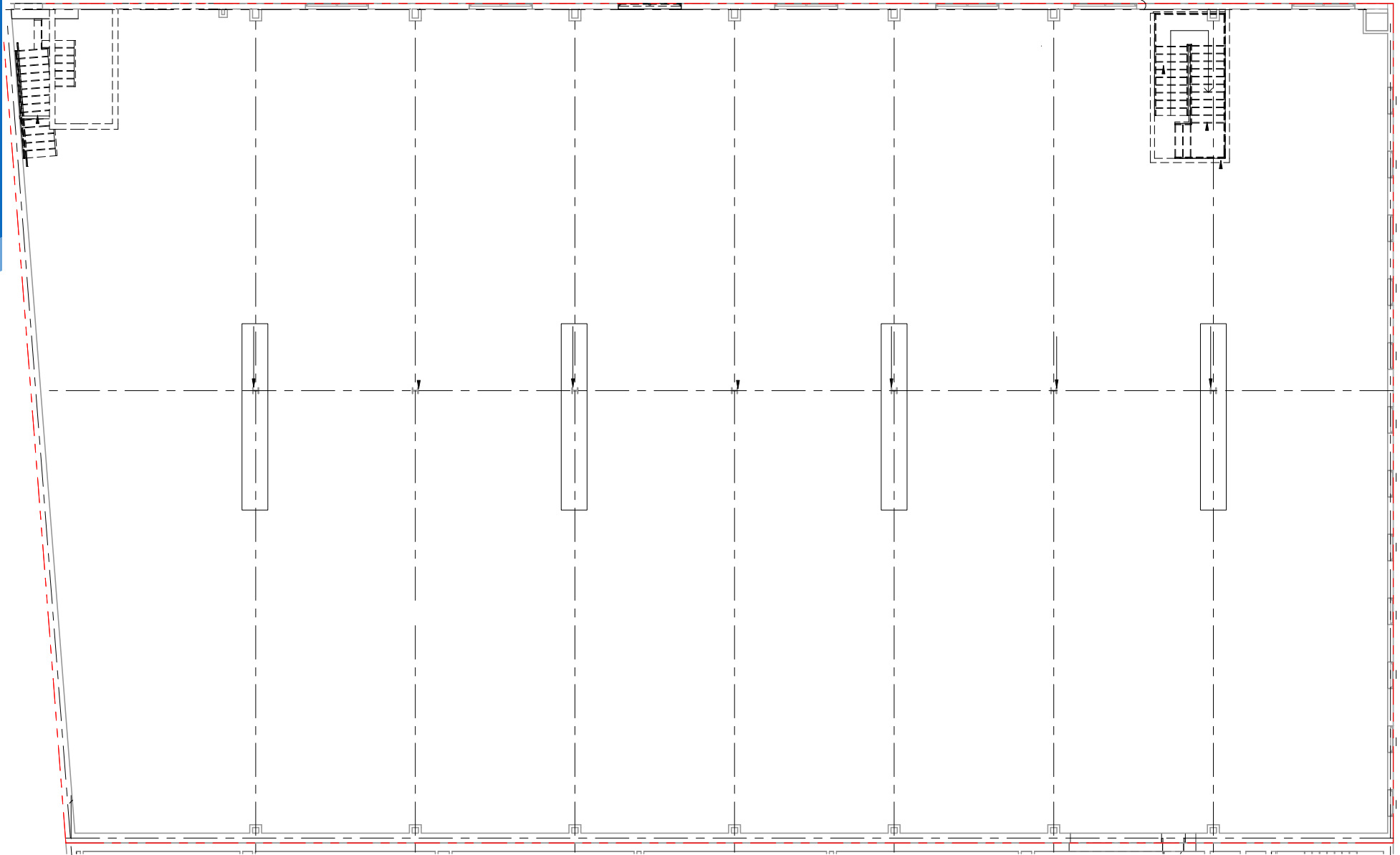


**MERIDIAN**  
 RETAIL LEASING

284 DYCKMAN STREET  
INWOOD, NYC | Corner of Dyckman and Henshaw Streets

RETAIL FOR LEASE

FLOOR PLAN | GROUND FLOOR



JAMES FAMULARO

President  
646.658.7373  
jfamularo@meridiancapital.com

KYLE FINK

Senior Associate  
212.468.5980  
kfink@meridiancapital.com

JOAQUIN CARRILLO

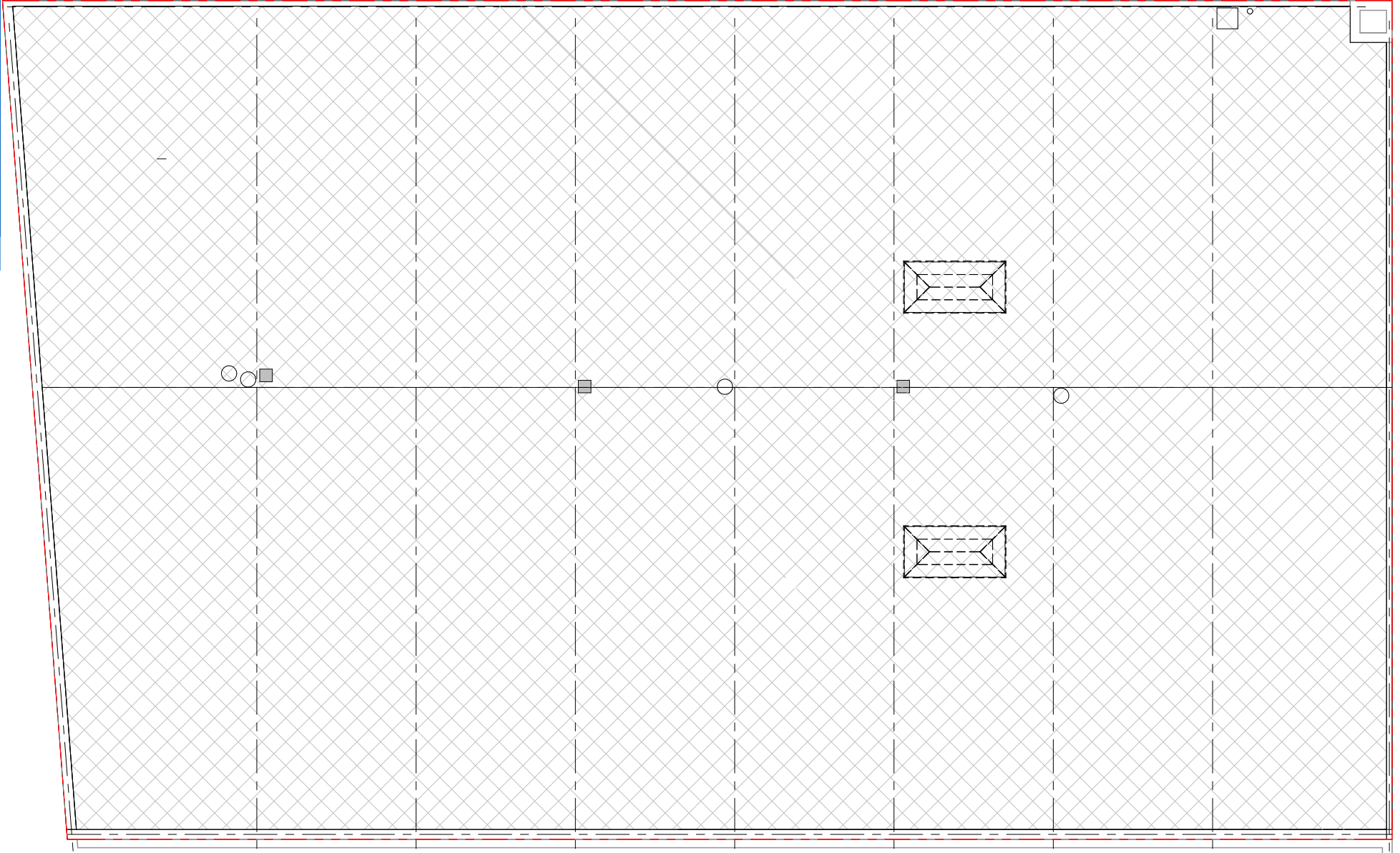
Associate  
212.468.5919  
jcarrilo@meridiancapital.com



**MERIDIAN**  
RETAIL LEASING

All information supplied is from sources deemed reliable and is furnished subject to errors, omissions, modifications, removal of the listing from sale or lease, and to any listing conditions, including the rates and manner of payment of commissions for particular offerings imposed by Meridian Capital Group. This information may include estimates and projections prepared by Meridian Capital Group with respect to future events, and these future events may or may not actually occur. Such estimates and projections reflect various assumptions concerning anticipated results. While Meridian Capital Group believes these assumptions are reasonable, there can be no assurance that any of these estimates and projections will be correct. Therefore, actual results may vary materially from these estimates and projections. Any square footage dimensions set forth are approximate.

FLOOR PLAN | ROOFTOP



**JAMES FAMULARO**

President  
646.658.7373  
jfamularo@meridiancapital.com

**KYLE FINK**

Senior Associate  
212.468.5980  
kfink@meridiancapital.com

**JOAQUIN CARRILLO**

Associate  
212.468.5919  
jcarrillo@meridiancapital.com



**MERIDIAN**  
RETAIL LEASING

# 284 DYCKMAN STREET

INWOOD, NYC | Corner of Dyckman and Henshaw Streets

RETAIL FOR LEASE



NEIGHBORS

## JAMES FAMULARO

President  
646.658.7373  
jfamularo@meridiancapital.com

## KYLE FINK

Senior Associate  
212.468.5980  
kfink@meridiancapital.com

## JOAQUIN CARRILLO

Associate  
212.468.5919  
jcarrillo@meridiancapital.com



**MERIDIAN**  
RETAIL LEASING

All information supplied is from sources deemed reliable and is furnished subject to errors, omissions, modifications, removal of the listing from sale or lease, and to any listing conditions, including the rates and manner of payment of commissions for particular offerings imposed by Meridian Capital Group. This information may include estimates and projections prepared by Meridian Capital Group with respect to future events, and these future events may or may not actually occur. Such estimates and projections reflect various assumptions concerning anticipated results. While Meridian Capital Group believes these assumptions are reasonable, there can be no assurance that any of these estimates and projections will be correct. Therefore, actual results may vary materially from these estimates and projections. Any square footage dimensions set forth are approximate.