



INDUSTRIAL DISTRIBUTION FACILITY

FOR LEASE

5080 NORTH ROYAL ATLANTA DR
TUCKER, GA 30084

Available
Now

Property Highlights

- Total SF: 105,600 (divisible 26k-105k sf)
- Clear Height: 24'
- ESFR Sprinklered
- Lighting: LED
- Truck Court: 130'
- Bay Depth: 220'
- Electrical: 400 amp, 480 volt
- Column Spacing: 44 w x 40 d
- New: TPO roof, truck court asphalt & exterior paint

EMMA JACKSON
LEASING EXECUTIVE

770.916.1775 OFFICE
404.538.3745 MOBILE
EMMA@SHAHEENCO.COM

WWW.SHAHEENCO.COM



5080 NORTH ROYAL ATLANTA DR PROPERTY DETAILS

Ste	Approx. Total SF	Approx Office SF	Base Rent/SF	Base Rent/Mo.	CAM/SF	CAM/Mon.	Taxes SF	Taxes/Mon.	Ins./SF	Ins./Month	Water	Clear Height	Power	DH	DI
5080	105,600	6,277*	\$7.50	\$66,000	\$1.00	\$8,800	\$1.03	\$9,065	\$0.17	\$1,496	Tenant Pays	24'	1,600 amp, 480-volt	16	2
1	44,168	4,453	\$9.00	\$33,000	\$1.00	\$3,667	\$1.03	\$3,777	\$0.17	\$624	Tenant Pays	24'	400 amp, 480-volt	5	2
2	26,067	1,769	\$11.00	\$24,200	\$1.00	\$2,200	\$1.03	\$2,266	\$0.17	\$374	Tenant Pays	24'	400 amp, 480-volt	4	1
3	35,335	1,987	\$10.00	\$29,333	\$1.00	\$2,933	\$1.03	\$3,022	\$0.17	\$499	Tenant Pays	24'	400 amp, 480-volt	3	1

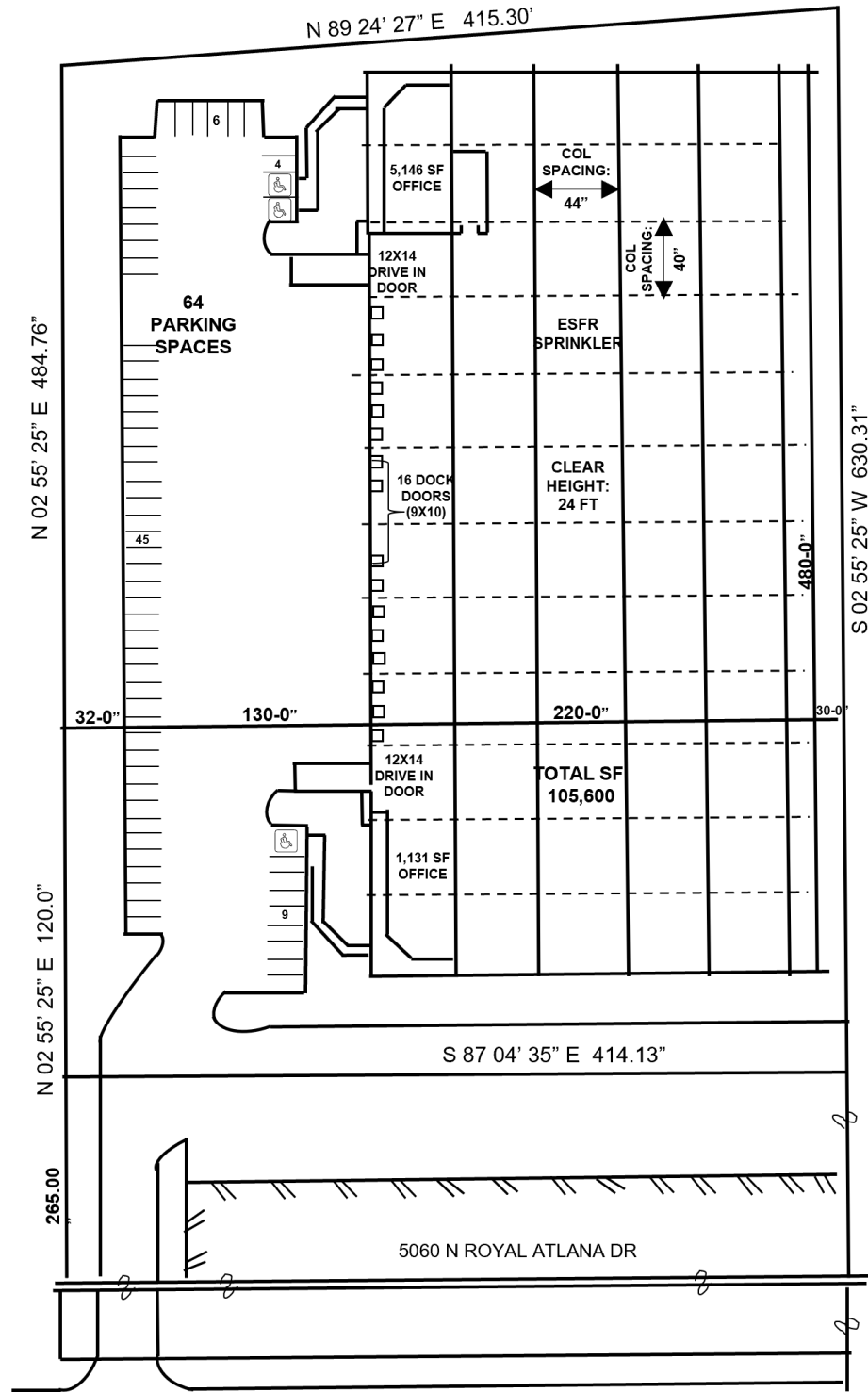


3625 Cumberland Blvd. SE Suite 250
Atlanta, GA 30339
770.916.1775

shaheenco.com

5080 NORTH ROYAL ATLANTA DR

SITE PLAN: 105k SF



**NORTH ROYAL
ATLANTA DRIVE**

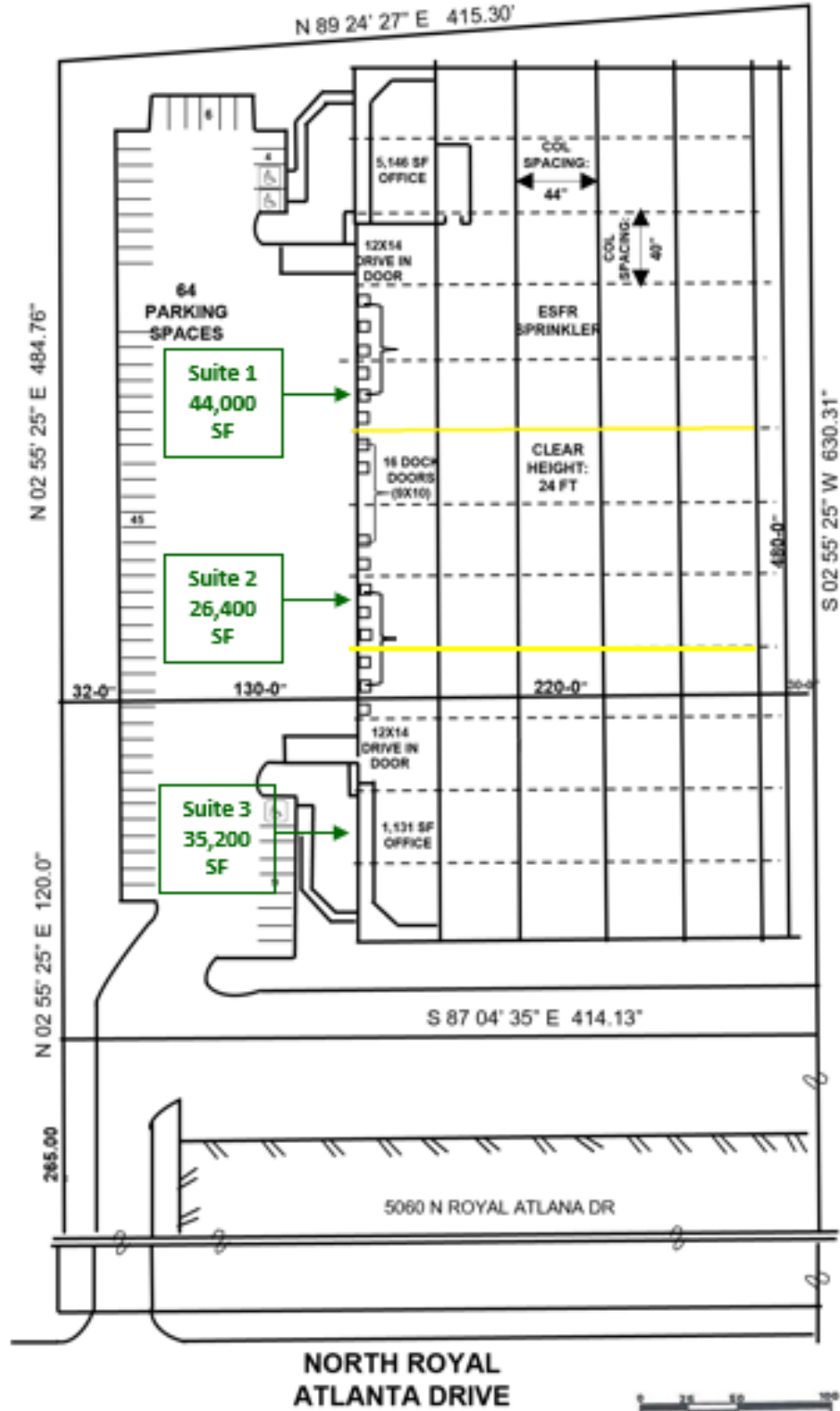


3625 Cumberland Blvd. SE Suite 250
Atlanta, GA 30339
770.916.1775

shaheenco.com

5080 NORTH ROYAL ATLANTA DR

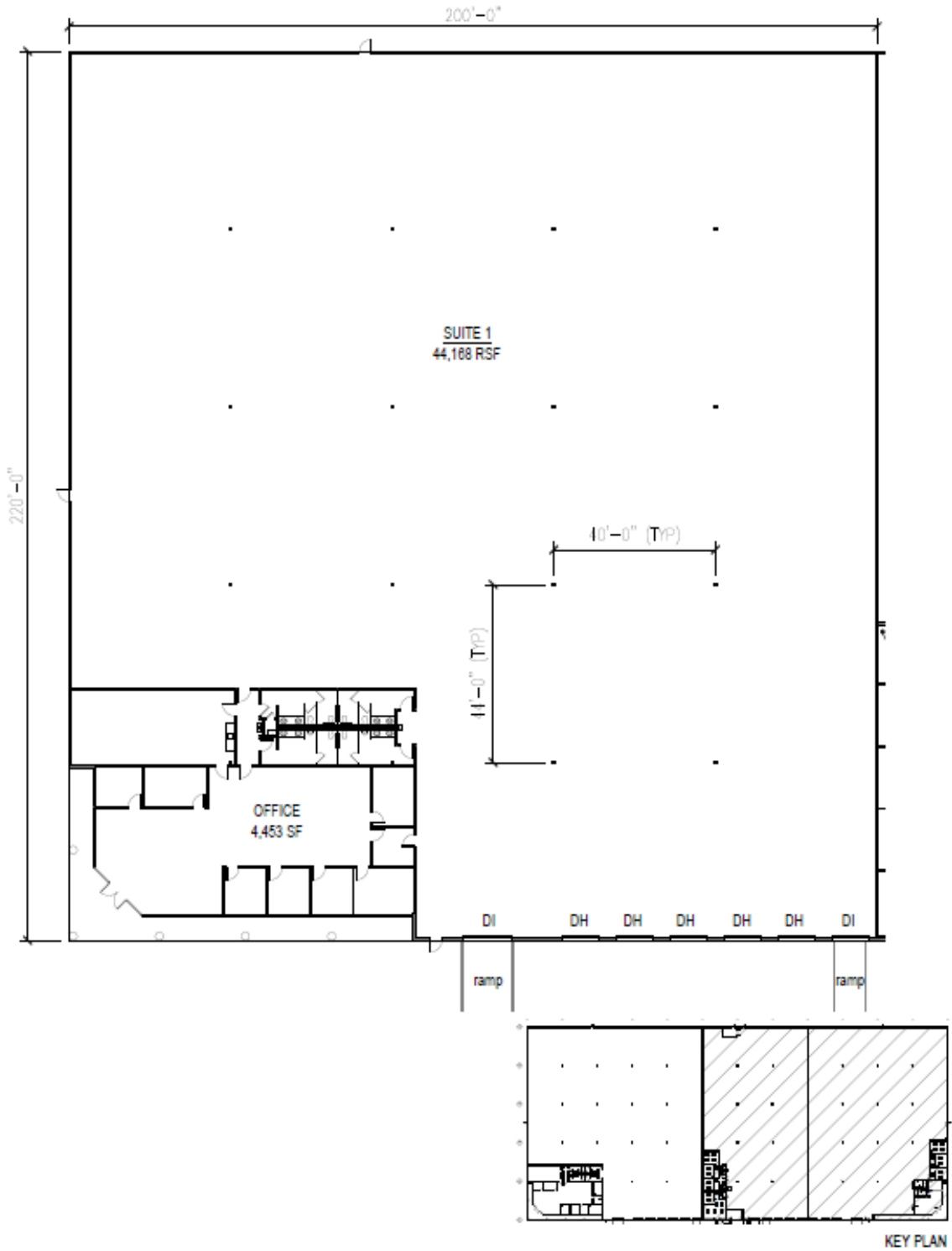
SITE PLAN: 26K-105K SF



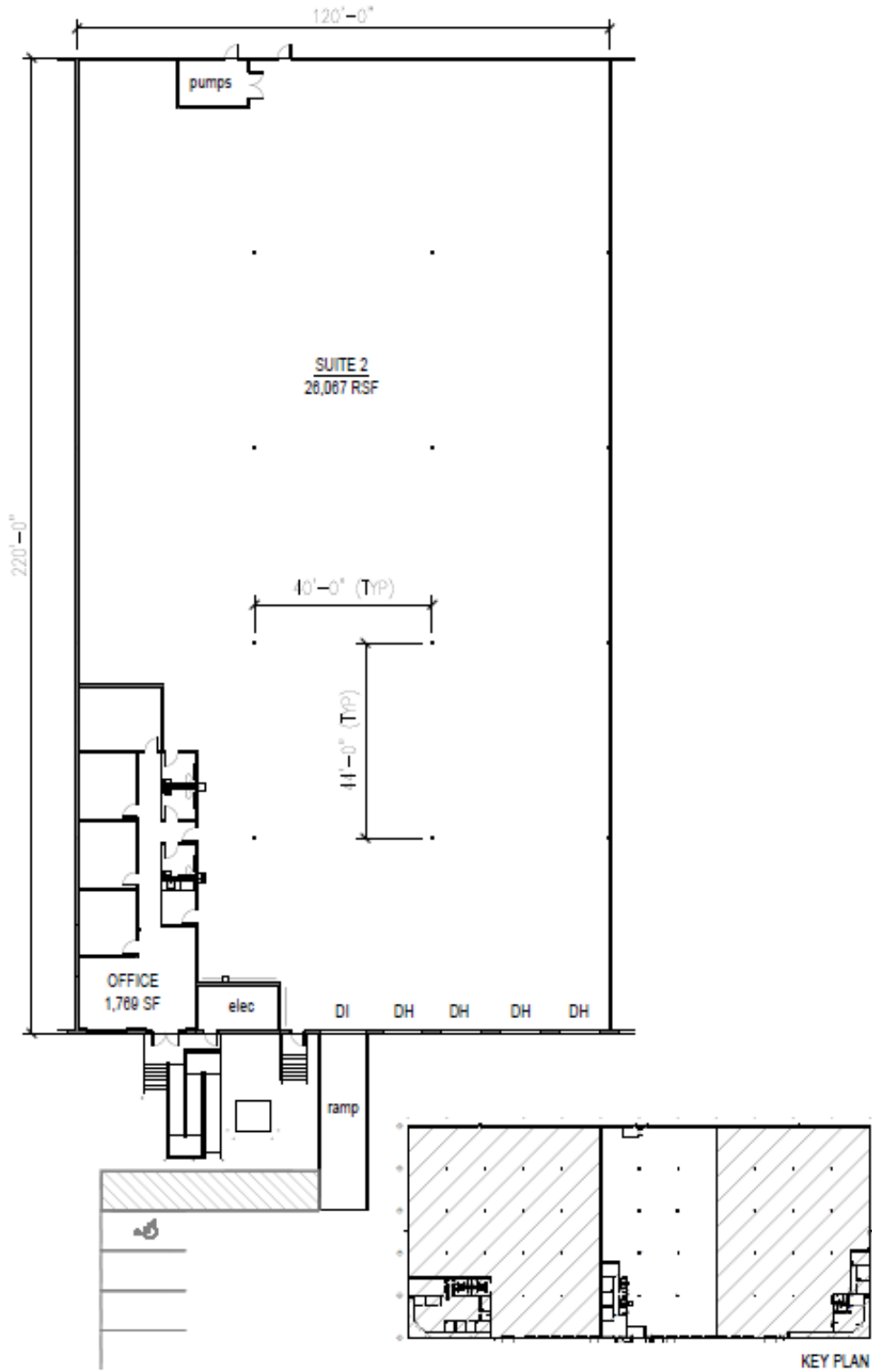
3625 Cumberland Blvd. SE Suite 250
Atlanta, GA 30339
770.916.1775

shaheenco.com

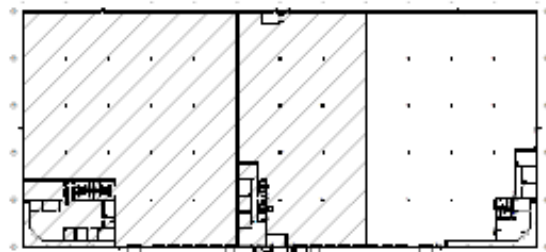
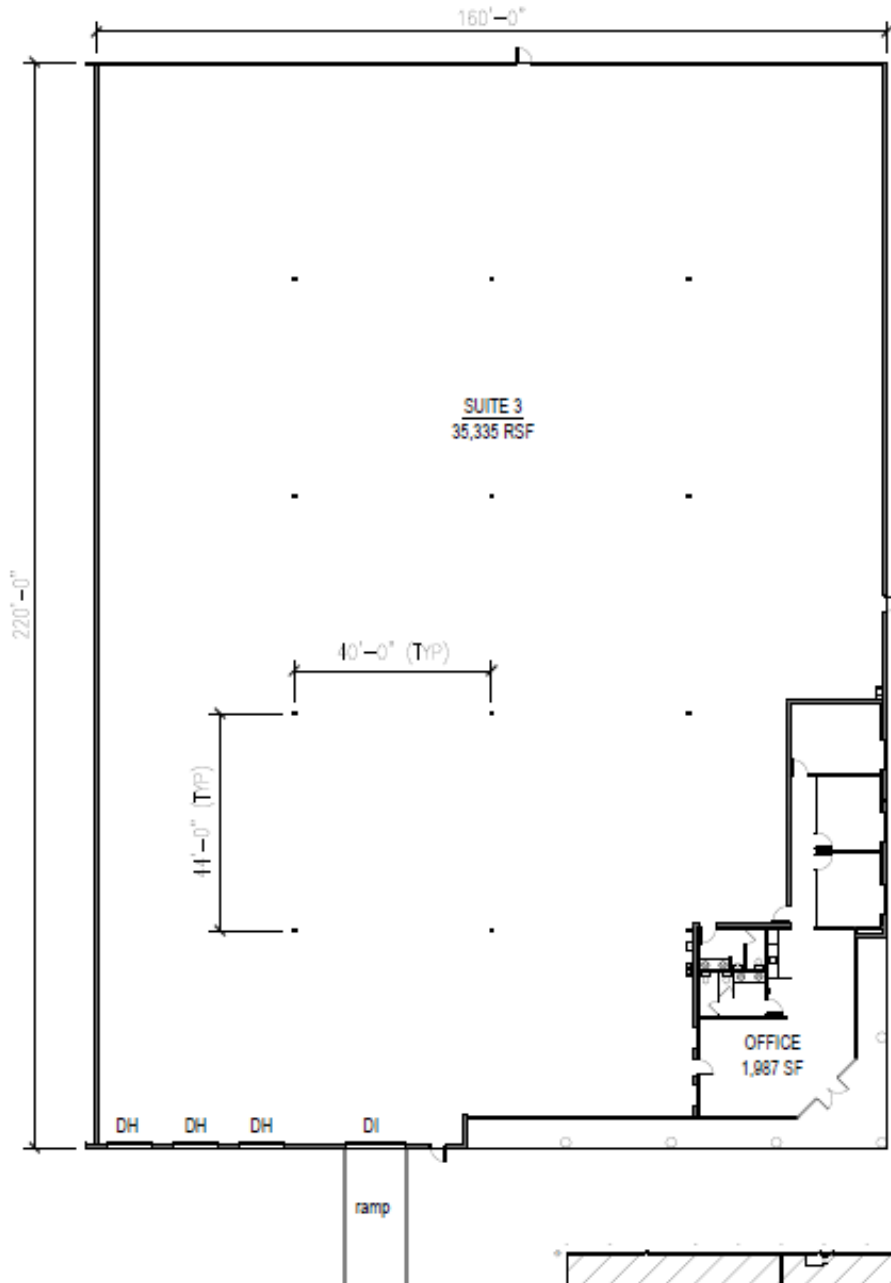
5080 NORTH ROYAL ATLANTA DR FLOOR PLAN SUITE 1



5080 NORTH ROYAL ATLANTA DR FLOOR PLAN SUITE 2



5080 NORTH ROYAL ATLANTA DR FLOOR PLAN SUITE 3



KEY PLAN



3625 Cumberland Blvd. SE Suite 250
Atlanta, GA 30339
770.916.1775

shaheenco.com