

AVAILABLE FOR LEASE

10725 John Price Rd. / Charlotte, NC 28273

- +/- 19,875 sq ft total
- Zoned ML-1 (light industrial)
- 20' clear height
- Suite A: +/- 11,105 sf
 - Three (3) loading docks
 - Drive In Ramp
 - Showroom
 - Fully Conditioned Space
- Suite B: +/- 8,770 sf
 - One (1) drive in door
 - Back lot could be fenced



[::: CLICK HERE FOR VIDEO TOUR :::](#)

Contact:

Doug Wynne / 704-965-1520
doug@perennialcommercial.com

Nick Prendergast / 804-432-4828
nick@perennialcommercial.com

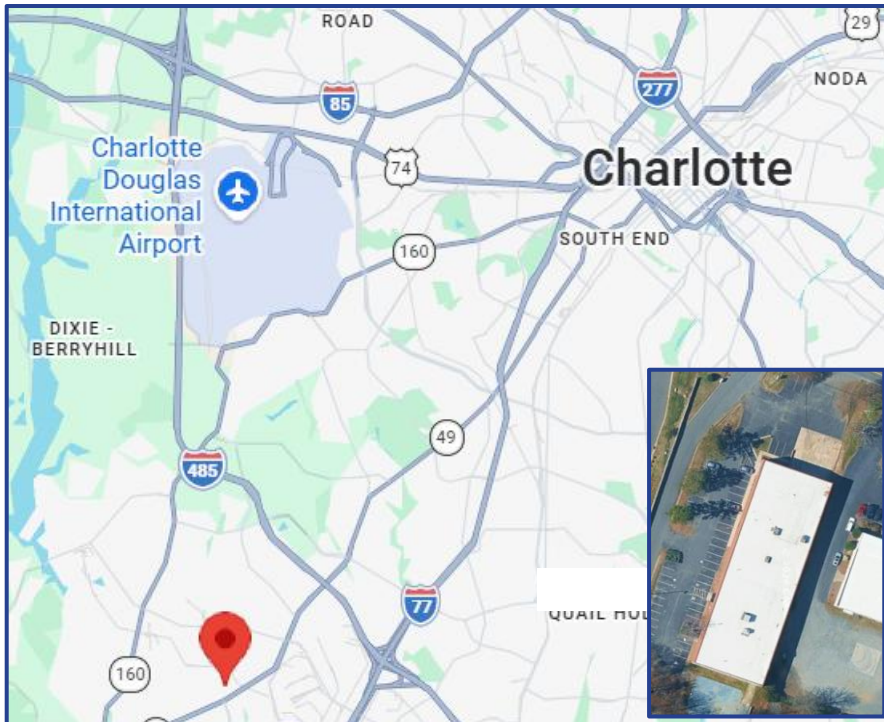
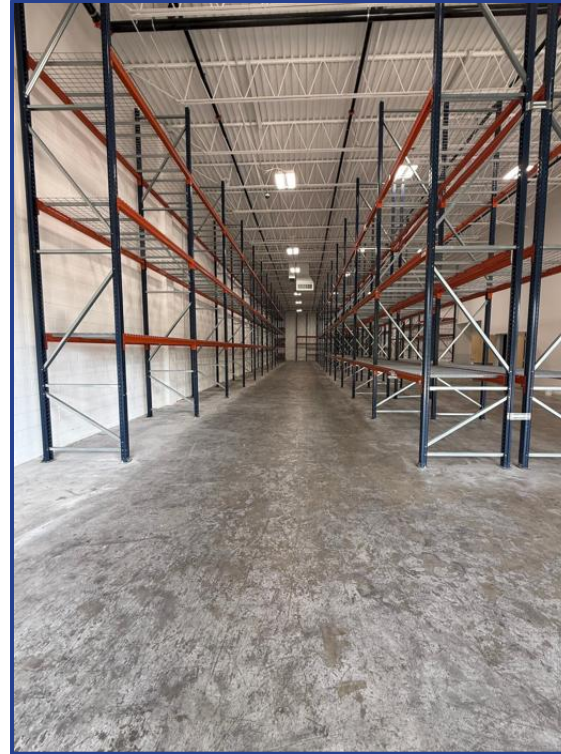
Perennial
Commercial Real Estate



~helping business succeed year after year

AVAILABLE FOR LEASE

10725 John Price Rd. / Charlotte, NC 28273



Contact:

Doug Wynne / 704-965-1520 / doug@perennialcommercial.com

Nick Prendergast / 804-432-4828 / nick@perennialcommercial.com

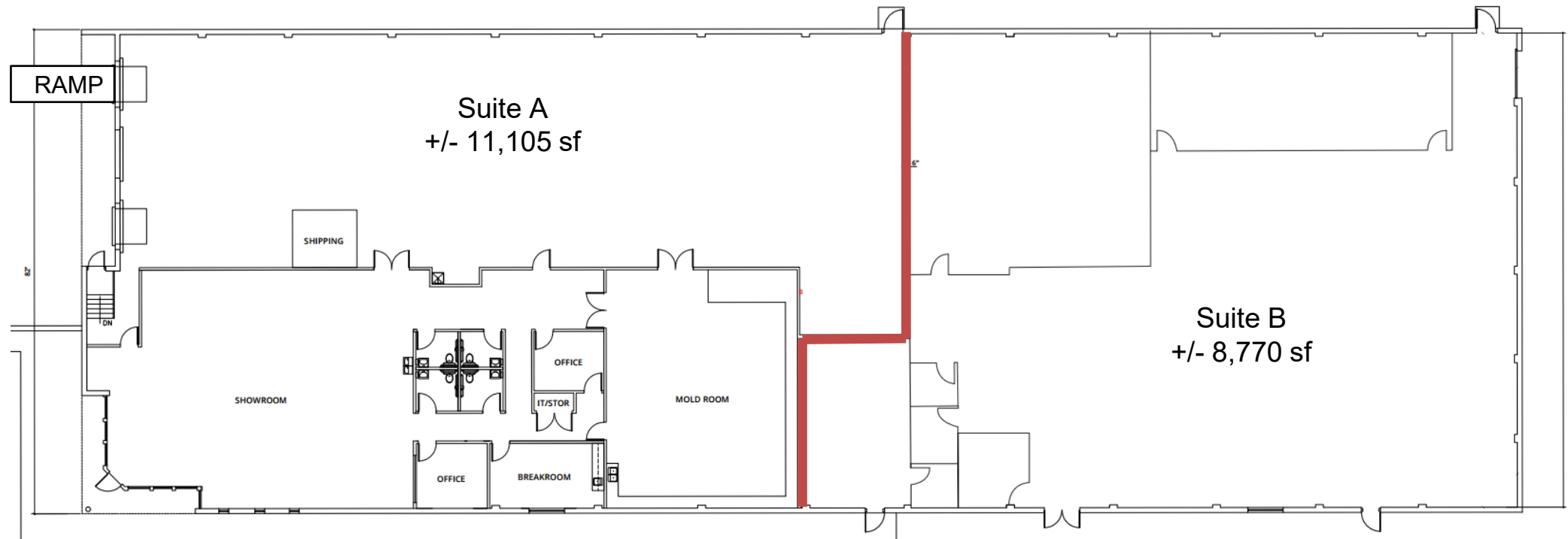
Perennial
Commercial Real Estate



~helping business succeed year after year

AVAILABLE FOR LEASE

10725 John Price Rd. / Charlotte, NC 28273



Disclaimer:

All information is provided for marketing purposes only and is subject to change without notice. No representations or warranties, express or implied, are made as to the accuracy or completeness of the information. Prospective tenants and other parties should conduct their own independent due diligence and verification of all matters.

Perennial 
Commercial Real Estate

~helping business succeed year after year