

40433-40665 KOPPERNICK ROAD
CANTON, MICHIGAN

HI-TECH FOR LEASE
2,503 – 7,881 Square Feet Available



**SIGNATURE
ASSOCIATES**
KNOW SIGNATURE | KNOW RESULTS

KOPPERNICK TECH CENTER



PROPERTY FEATURES

- 2,503 – 7,881 square feet available
 - 40503 (Unit 12): 2,503 square feet
 - 40635 (Unit 1): 4,071 square feet
 - 40615 (Unit 2): 3,810 square feet
 - 40641 (Unit 23): 3,752 square feet
- First-class flex space available
- All new build-outs
- Best economic leasing packages available in all of Metro Detroit
- Lease Rate: \$9.95 - \$10.75/sf G + U



For more information, please contact:

DAVE GREEN
(248) 948 4184
dgreen@signatureassociates.com

SIGNATURE ASSOCIATES
One Towne Square, Suite 1200
Southfield, MI 48076
www.signatureassociates.com

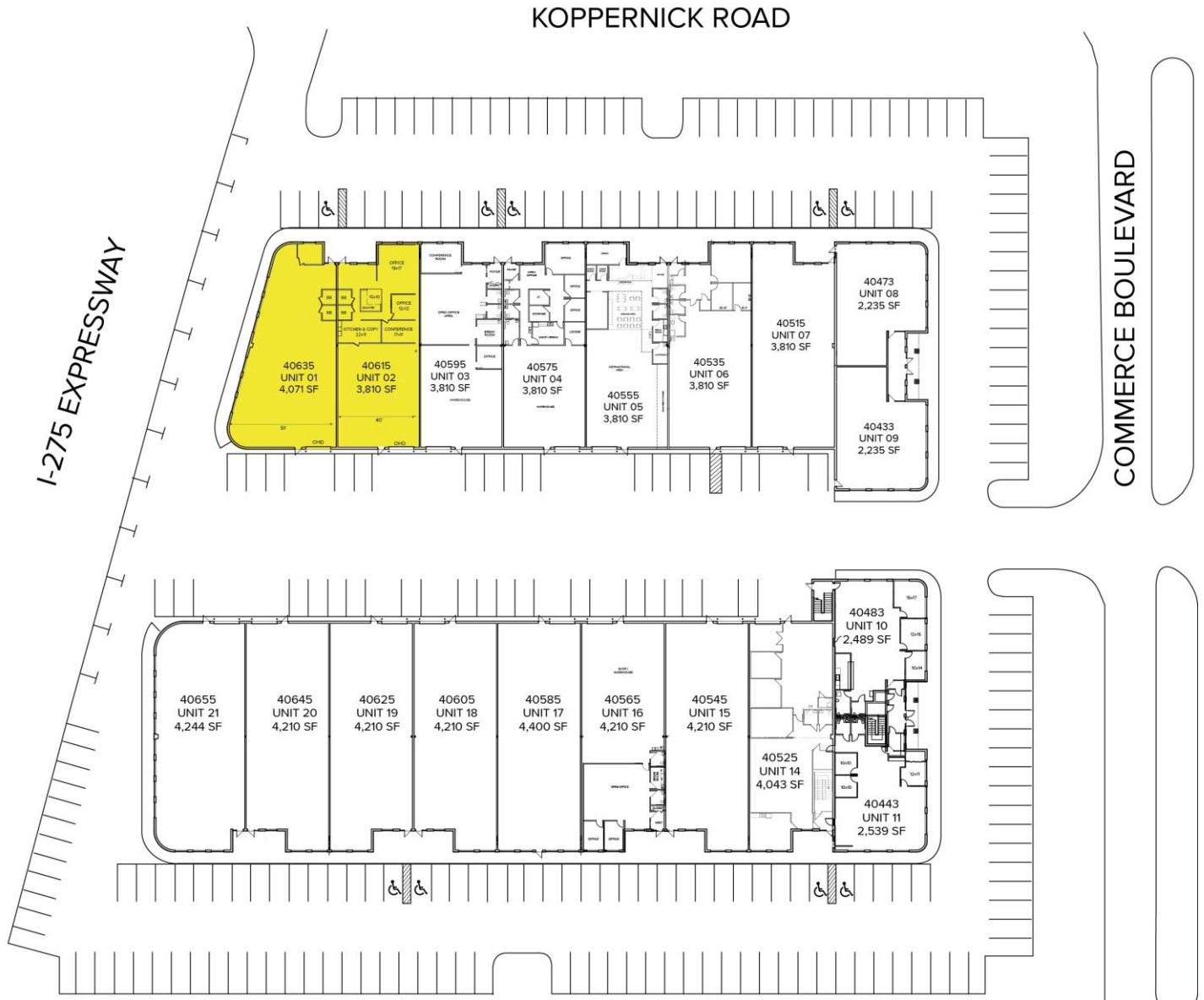
40433-40665 Koppernick Road – Canton, Michigan

Hi-Tech For Lease

2,503 – 7,881
Square Feet
AVAILABLE

AVAILABILITY

UNIT	TOTAL SF	OFFICE SF	RATE
40635	4,071	To Suit	\$10.75 G + U
40615	3,810	To Suit	\$10.75 G + U



For more information, please contact:

DAVE GREEN
(248) 948 4184
dgreen@signatureassociates.com

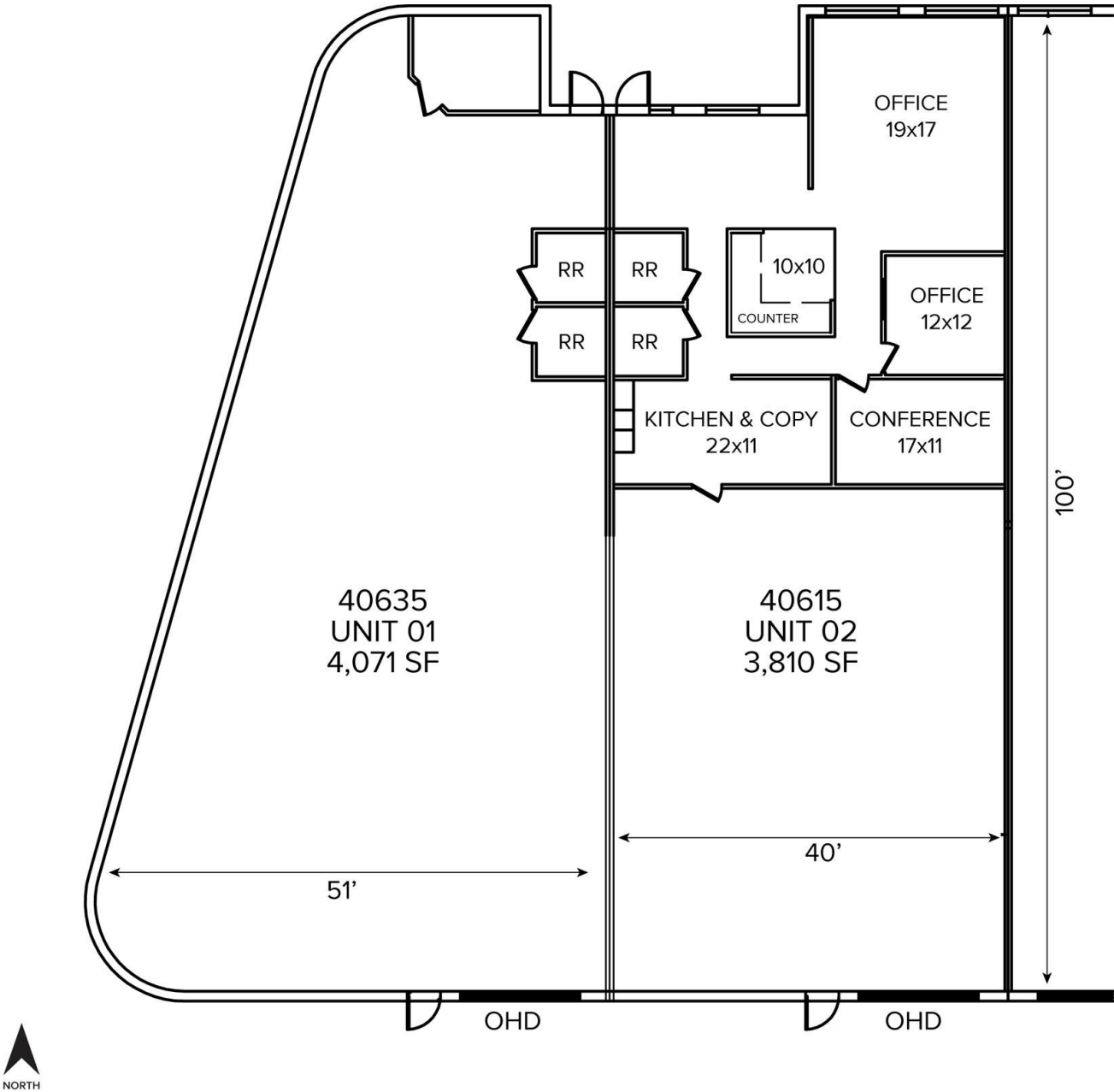
SIGNATURE ASSOCIATES
One Towne Square, Suite 1200
Southfield, MI 48076
www.signatureassociates.com

40433-40665 Koppernick Road – Canton, Michigan

Hi-Tech For Lease

2,503 – 7,881
Square Feet
AVAILABLE

Floor Plan



For more information, please contact:

DAVE GREEN
(248) 948 4184
dgreen@signatureassociates.com

SIGNATURE ASSOCIATES
One Towne Square, Suite 1200
Southfield, MI 48076
www.signatureassociates.com

Information is subject to verification and no liability for errors or omissions is assumed. Price is subject to change and listing withdrawal.

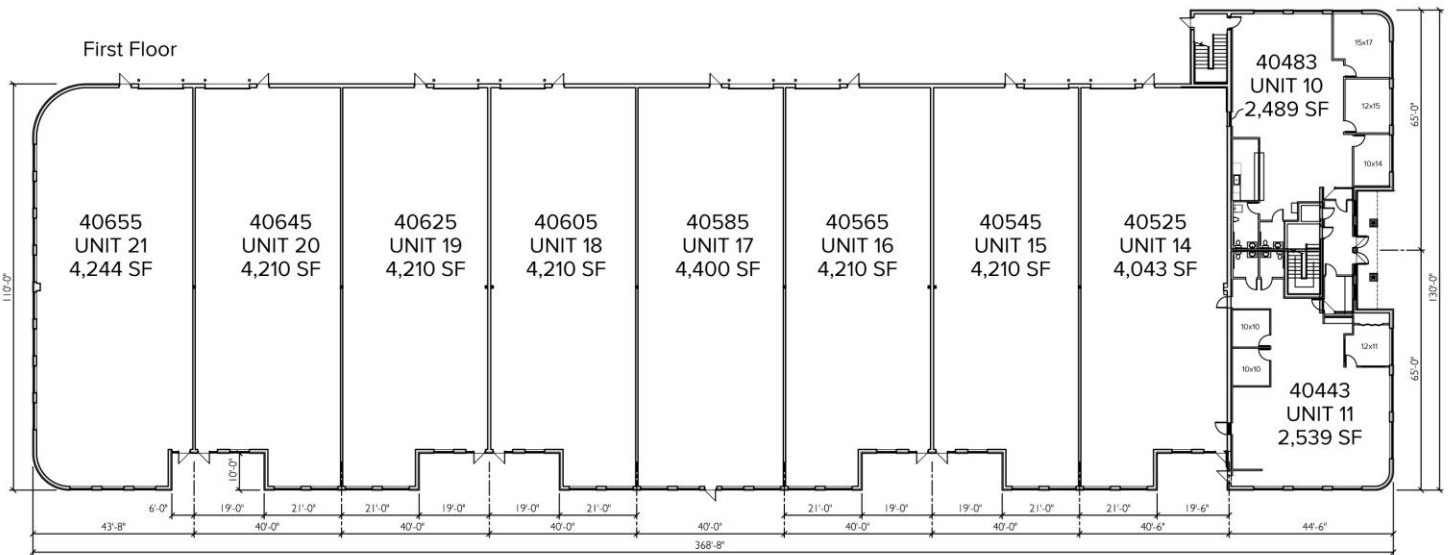
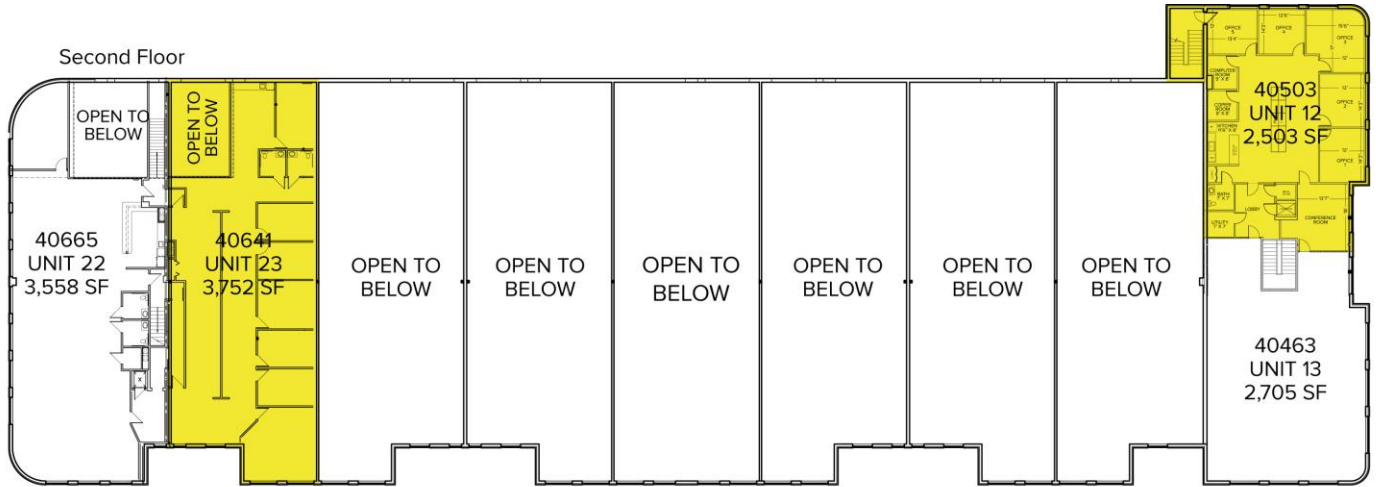
40433-40665 Koppernick Road – Canton, Michigan

Hi-Tech For Lease

2,503 – 7,881
Square Feet
AVAILABLE

AVAILABILITY

UNIT	TOTAL SF	OFFICE SF	RATE
40503	2,503	2,503	\$9.95 G + U
40641	3,752	3,752	\$10.50 G + U



For more information, please contact:

DAVE GREEN
(248) 948 4184
dgreen@signatureassociates.com

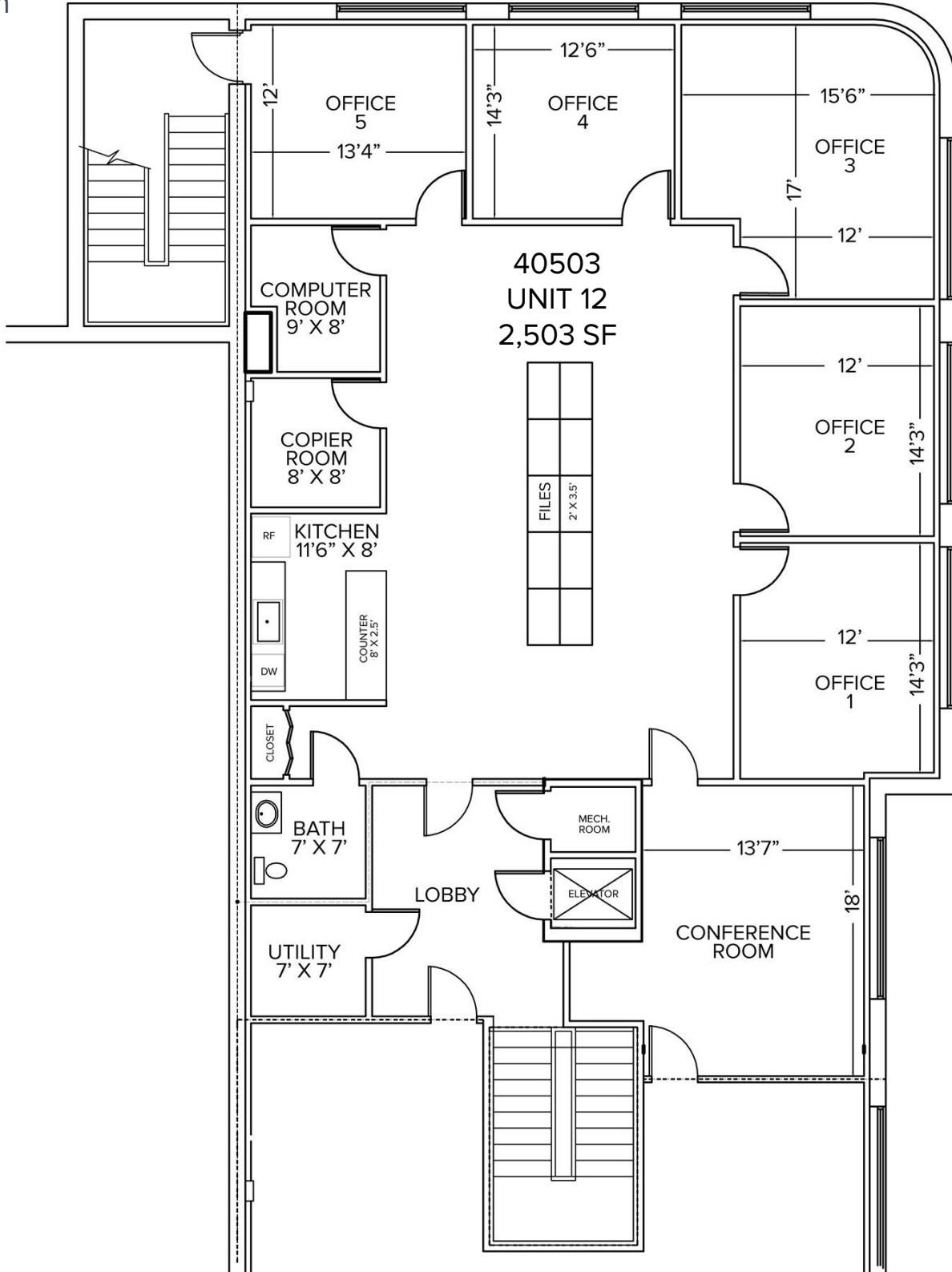
SIGNATURE ASSOCIATES
One Towne Square, Suite 1200
Southfield, MI 48076
www.signatureassociates.com

40433-40665 Koppernick Road – Canton, Michigan

Hi-Tech For Lease

2,503 – 7,881
Square Feet
AVAILABLE

Floor Plan



For more information, please contact:

DAVE GREEN
(248) 948 4184
dgreen@signatureassociates.com

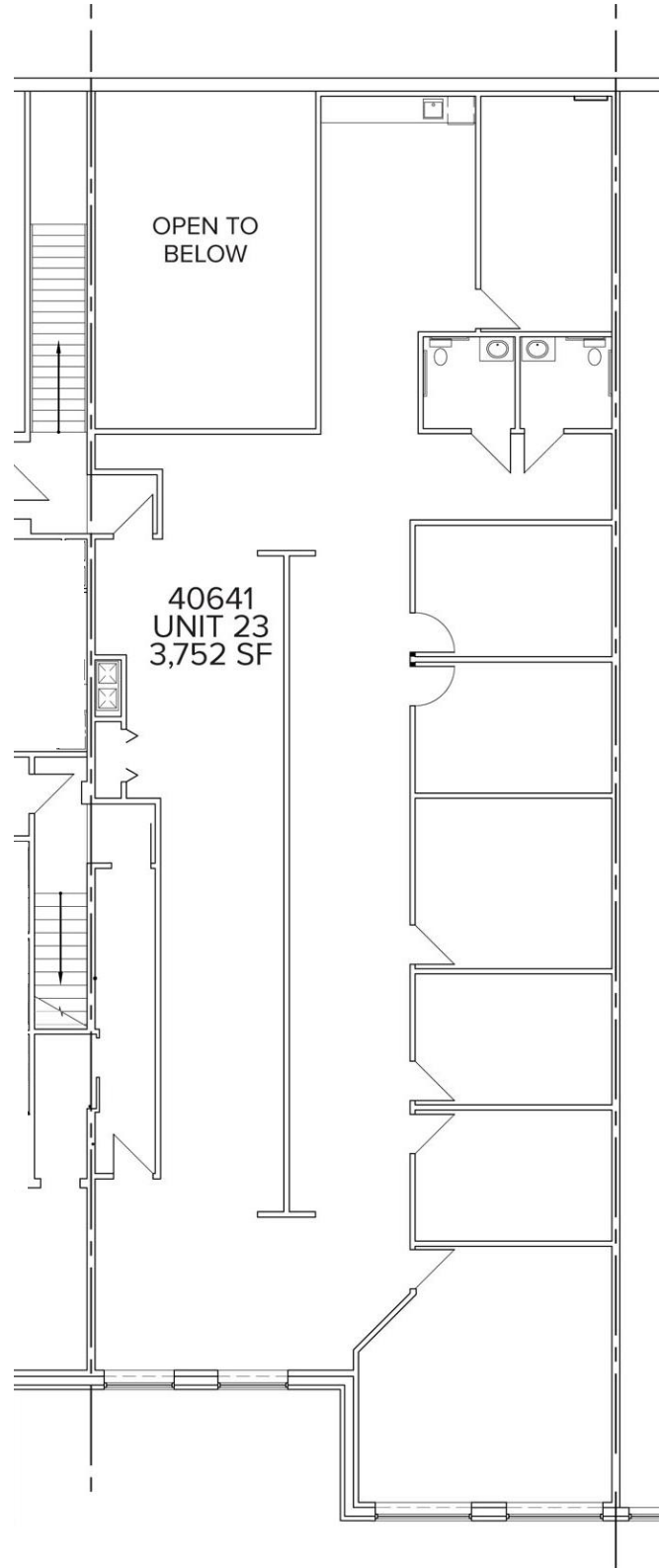
SIGNATURE ASSOCIATES
One Towne Square, Suite 1200
Southfield, MI 48076
www.signatureassociates.com

40433-40665 Koppernick Road – Canton, Michigan

Hi-Tech For Lease

2,503 – 7,881
Square Feet
AVAILABLE

Floor Plan



For more information, please contact:

DAVE GREEN
(248) 948 4184
dgreen@signatureassociates.com

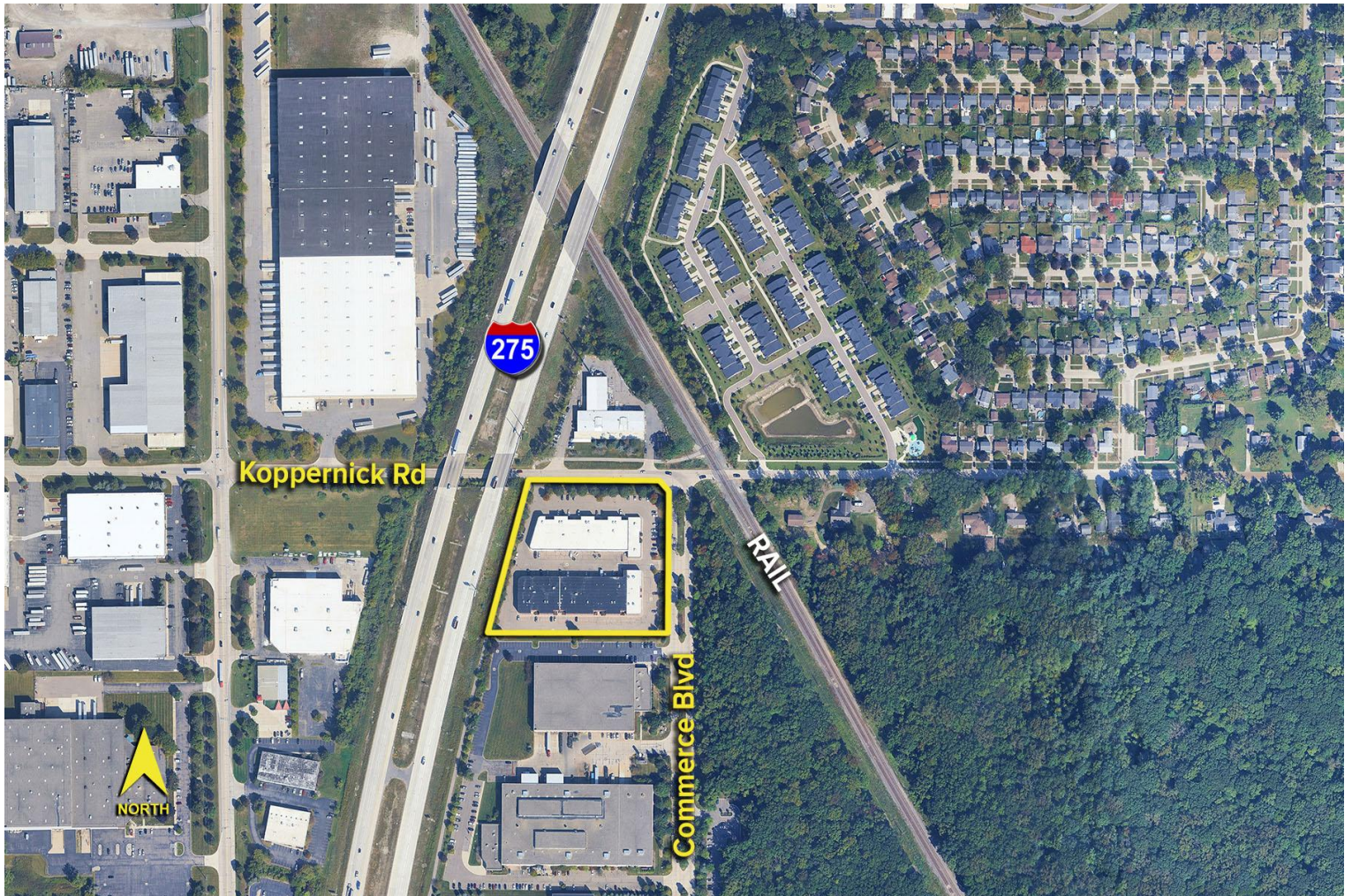
SIGNATURE ASSOCIATES
One Towne Square, Suite 1200
Southfield, MI 48076
www.signatureassociates.com

40433-40665 Koppernick Road – Canton, Michigan

Hi-Tech For Lease

2,503 – 7,881
Square Feet
AVAILABLE

Aerial



For more information, please contact:

DAVE GREEN
(248) 948 4184
dgreen@signatureassociates.com

SIGNATURE ASSOCIATES
One Towne Square, Suite 1200
Southfield, MI 48076
www.signatureassociates.com