

FOR LEASE

±5,562 SF INDUSTRIAL BUILDING
REDLANDS CORPORATE CENTER



2351 LUGONIA AVENUE, UNITS D & E | REDLANDS, CA 92374



ALEX SMITH | Vice President | 951.276.3668 | asmith@leeriverside.com | DRE #02031896

CARLY HAMILTON | Leasing Director | 951.276.3663 | chamilton@leeriverside.com | DRE #01968295

TOBY TEWELL | Senior Vice President | 951.276.3662 | ttewell@leeriverside.com | DRE #01822772

PROPERTY HIGHLIGHTS

Industrial Building:

±5,562 SF

Availability:

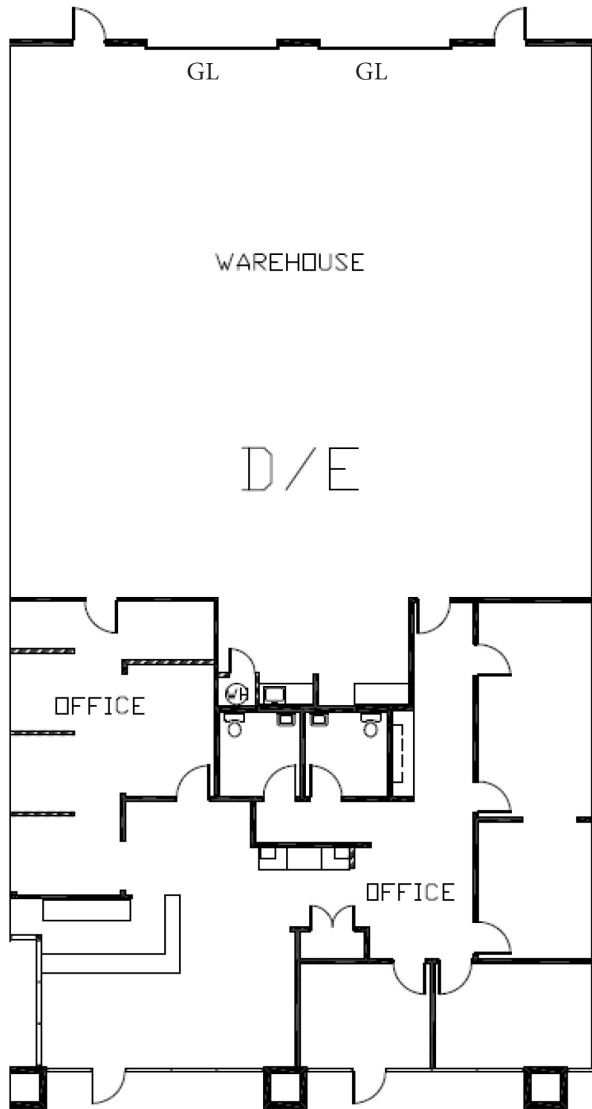
Now

Business Park:

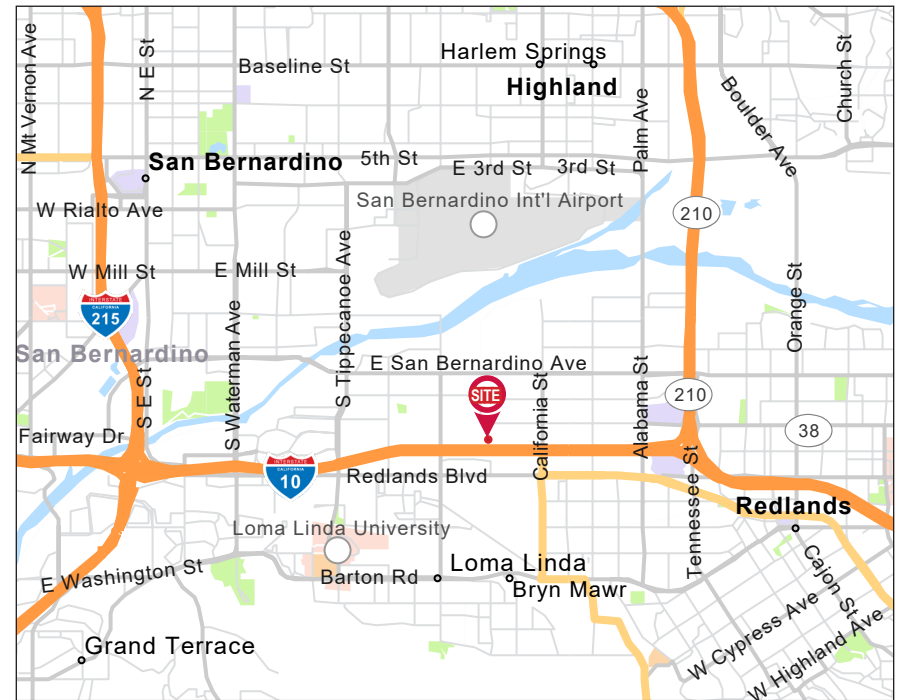
Redlands Corporate Center

Location:

Excellent Freeway Access to I-10 at California St & Mountain View Ave



- ▶ ±2,628 SF Office
- ▶ 2 Ground Level Doors
- ▶ 24' Clear Height
- ▶ SP-42 Zoning
- ▶ 3:1 Parking Ratio
- ▶ TBD Amps; TBDV (Need to Verify)
- ▶ Retail Frontage on Lugonia Avenue



PROPERTY PHOTOS



SITE PLAN



2351 LUGONIA AVENUE, UNITS D & E, REDLANDS, CA 92374

No warranty or representation has been made to the accuracy of the foregoing information. Terms of sale or lease and availability are subject to change or withdrawal without notice.
Lee & Associates Commercial Real Estate Services, Inc. - Riverside 4193 Flat Rock Drive, Suite 100 | Riverside, CA 92505 | Corporate DRE# 01048055