

# MIDTOWN HISTORICAL OFFICE

OWNER/USER SALE | 335 East Palm Lane - Phoenix, Arizona 85006



**J.T. Taylor**

Direct: (480) 868-2671

Mobile: (480) 225-6484

[jt.taylor@orionprop.com](mailto:jt.taylor@orionprop.com)

**Nick Miner, CCIM**

Direct: (480) 612-0384

Mobile: (480) 226-8037

[nick.miner@orionprop.com](mailto:nick.miner@orionprop.com)





**PRICE:** \$2,099,000

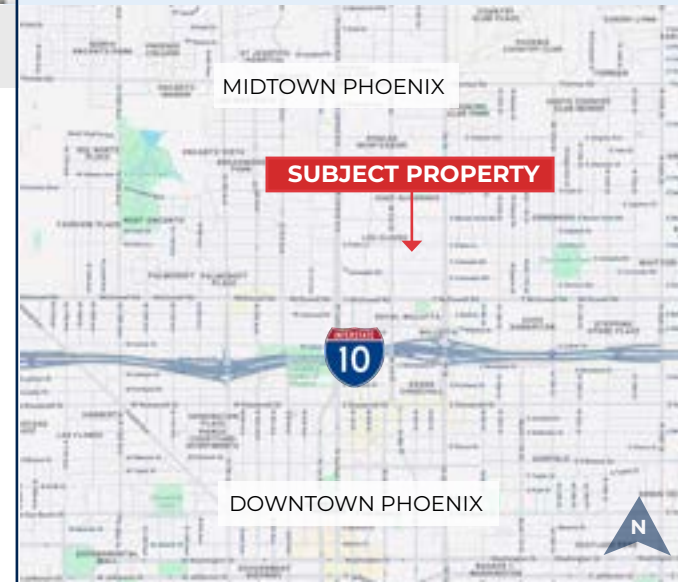
**OFFICE SIZE:** 7,700 SF

**BUILT:** 1930 / 1986 / 2020

**PARKING:** 25 Total Parking Spaces / 23 Covered

## PROPERTY HIGHLIGHTS

- Historic Boutique Office in Midtown, Phoenix
- Perfect owner/user + income opportunity (\$6,789/mo)
- Suite 201 & 202 available to be occupied; < 50% of Building
- Property has 'Speak Easy' Basement not included SF
- Centrally located near Downtown & Midtown, less than a mile from I-10 Freeway



AVAILABLE

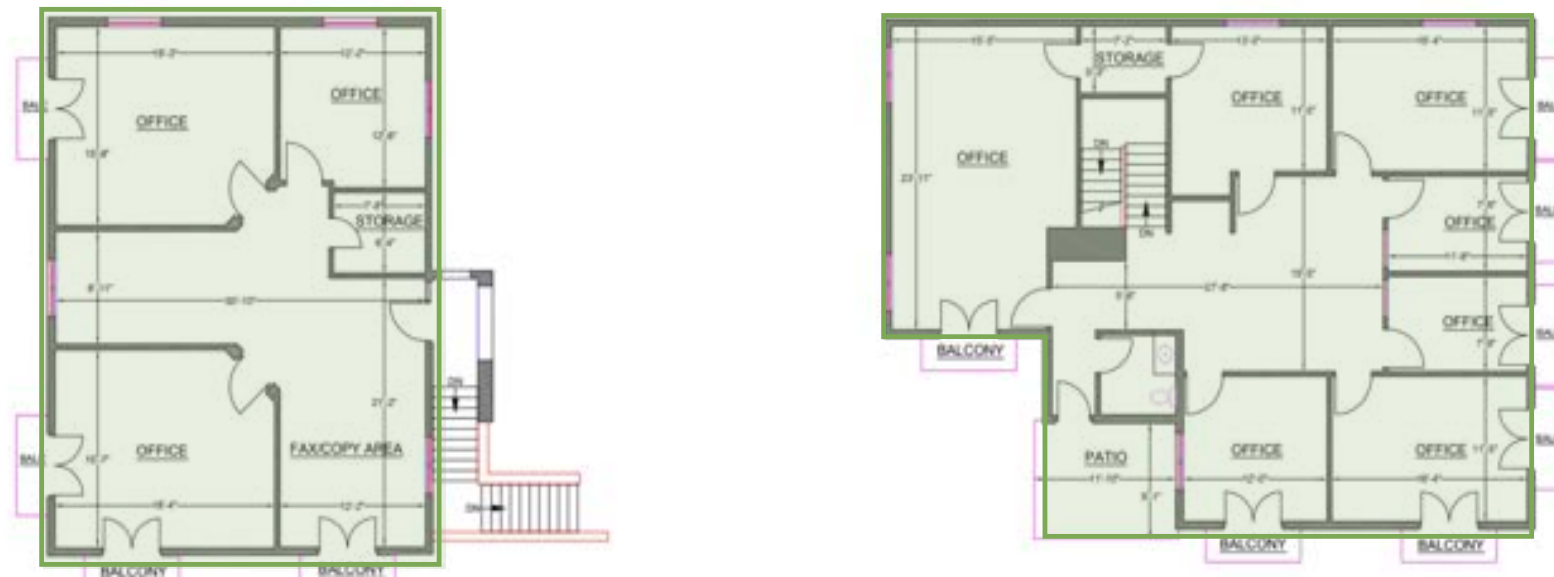
COMMON AREAS

OCCUPIED

## FIRST FLOOR



## SECOND FLOOR



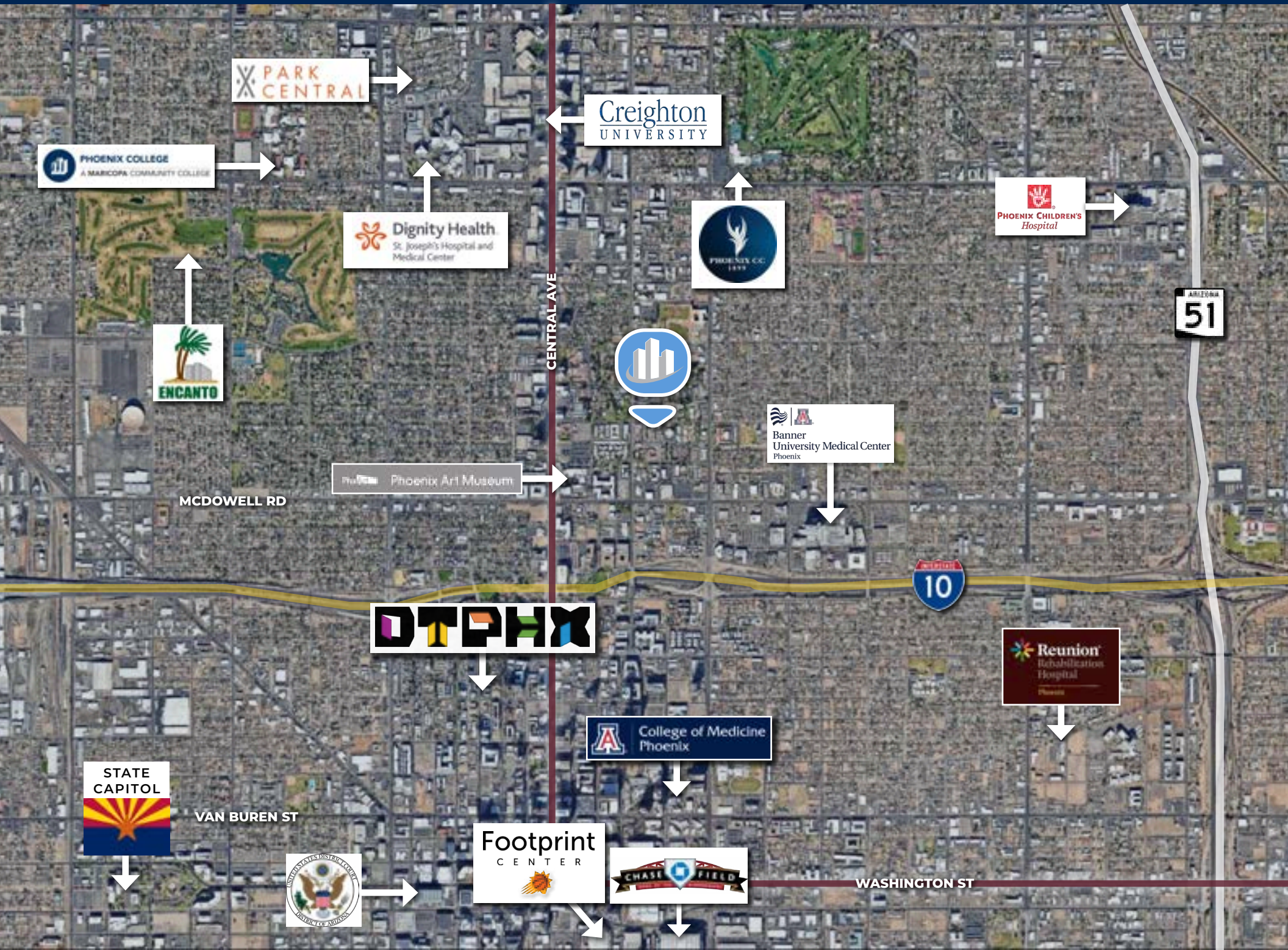


# MIDTOWN HISTORICAL OFFICE

# EXTERIOR PHOTOS

APN 118-54-028 / Annual Tax \$19,791





PARK CENTRAL

PHOENIX COLLEGE  
A MARICOPA COMMUNITY COLLEGE

ENCANTO

Dignity Health  
St. Joseph's Hospital and  
Medical Center

PHOENIX CC  
1977

Creighton  
UNIVERSITY

PHOENIX CHILDREN'S  
Hospital

CENTRAL AVE

ARIZONA  
51

MCDOWELL RD

Phoenix Art Museum

Banner  
University Medical Center  
Phoenix

10

DTPHX

Reunion  
Rehabilitation  
Hospital  
Phoenix

STATE  
CAPITOL

VAN BUREN ST

College of Medicine  
Phoenix

Footprint  
CENTER

CHASE FIELD

WASHINGTON ST

UNITED STATES DISTRICT COURT  
DISTRICT OF ARIZONA

# DEMOGRAPHICS

1, 3, 5 MILE RADIUS OF SITE



2025 SUMMARY (SitesUSA)	1 Mile	3 Mile	5 Mile
Daytime Population:	51,155	312,331	<b>707,277</b>
Residential Population:	23,141	159,502	404,948
2030 Proj. Residential Population:	26,192	165,939	404,829
Average Household Income:	<b>\$113,447</b>	\$93,212	\$102,682
Annual Household Expenditure:	\$1.3B	\$6.75B	<b>\$15.69B</b>
Median Age:	43	36	35
Housing Units:	14,985	81,173	178,502
Total Households:	13,427	73,575	162,332

