

# SOUTHWEST MEDICAL PLAZA I

7100 Oakmont Blvd.  
Fort Worth, TX 76132

Healthpeak® | **DOC**  
LISTED  
NYSE



Leasing Information:  
214.461.2383

**Peter Shaw**  
214.461.2302  
PShaw@lpc.com

**Douglas Maclay**  
214.461.2371  
dmaclay@lpc.com

**Elizabeth Madden**  
214.461.2366  
emadden@lpc.com

**Banks Newton**  
214.461.2388  
bnewton@lpc.com

# Lincoln

Lincoln Property Company  
8140 Walnut Hill Lane Suite 700  
Dallas, TX 75231

[www.lpc.com](http://www.lpc.com)

# SOUTHWEST MEDICAL PLAZA I

7100 Oakmont Blvd. | Fort Worth, TX 76132

Outpatient Medical For Lease

1,578 - 2,948 SF



## Property Overview

This off-campus Outpatient Medical Building is ideally positioned along the Chisholm Trail growth corridor. Residing minutes away from Texas Health Harris Methodist Southwest Hospital, TCU, and the Fort Worth Medical District, Southwest Medical Plaza I offers convenience for patients and staff.

## Property Highlights

- Immediate access to the Chisholm Trail tollway and southwest Fort Worth growth corridor
- Convenient access to Texas Health Harris Methodist Southwest Hospital, Fort Worth Medical District, and TCU
- No Use Restrictions
- Free Parking for Patients & Staff
- Adjacent to Baylor Scott & White Surgicare

## Availabilities

Suite 202	1,578 SF
Suite 204	1,752 SF
Suite 207	2,948 SF

**Peter Shaw**

214.461.2302  
PShaw@lpc.com

**Douglas Maclay**

214.461.2371  
dmaclay@lpc.com

**Elizabeth Madden**

214.461.2366  
emadden@lpc.com

**Banks Newton**

214.461.2388  
bnewton@lpc.com

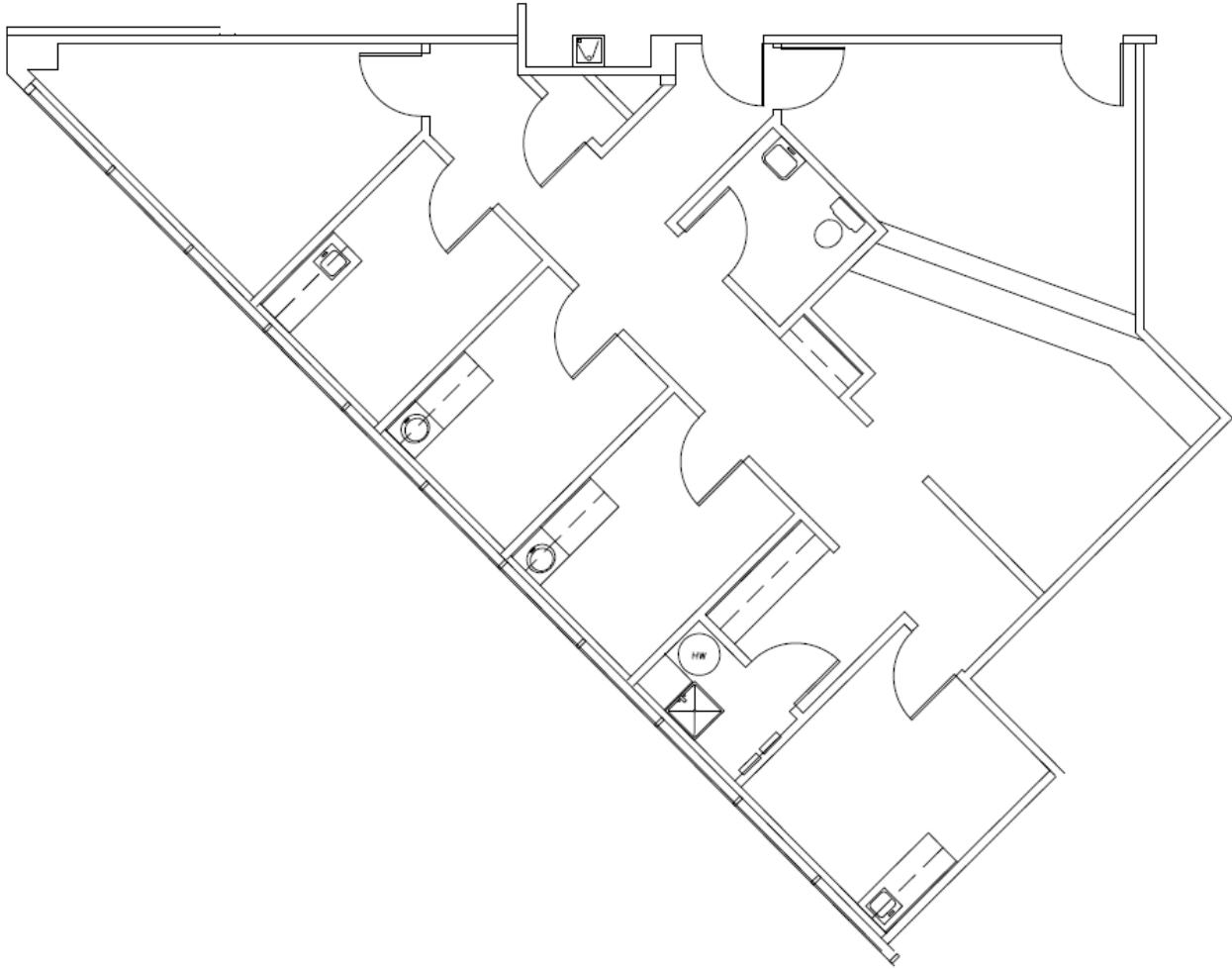
**Lincoln**

# SOUTHWEST MEDICAL PLAZA I

7100 Oakmont Blvd. | Fort Worth, TX 76132

Suite 202

1,578 SF



---

**Suite**

Suite 202

**Size**

1,578 SF

---

**Peter Shaw**

214.461.2302  
PShaw@lpc.com

**Douglas Maclay**

214.461.2371  
dmaclay@lpc.com

**Elizabeth Madden**

214.461.2366  
emadden@lpc.com

**Banks Newton**

214.461.2388  
bnewton@lpc.com

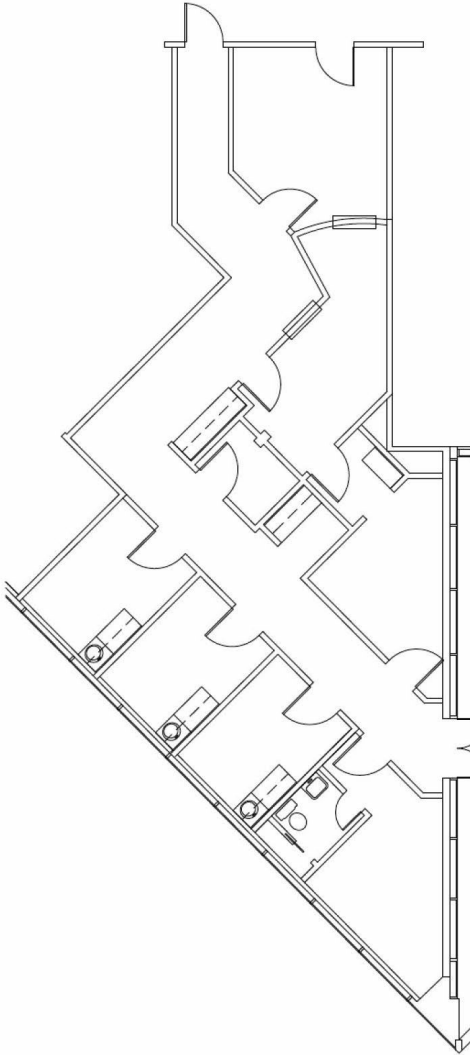
**Lincoln**

# SOUTHWEST MEDICAL PLAZA I

7100 Oakmont Blvd. | Fort Worth, TX 76132

Suite 204

1,752 SF



Suite	Size
Suite 204	1,752 SF

**Peter Shaw**

214.461.2302  
PShaw@lpc.com

**Douglas Maclay**

214.461.2371  
dmaclay@lpc.com

**Elizabeth Madden**

214.461.2366  
emadden@lpc.com

**Banks Newton**

214.461.2388  
bnewton@lpc.com

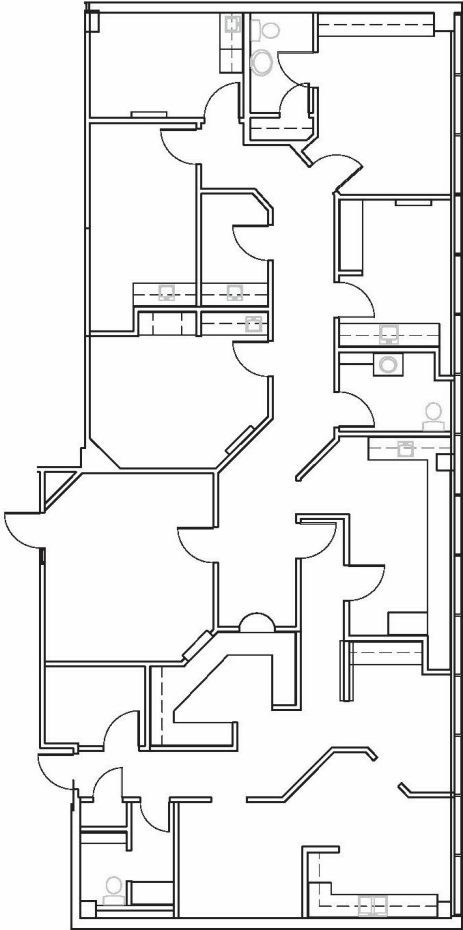
**Lincoln**

# SOUTHWEST MEDICAL PLAZA I

7100 Oakmont Blvd. | Fort Worth, TX 76132

Suite 207

2,948 SF



Suite	Size
Suite 207	2,948 SF

**Peter Shaw**

214.461.2302  
PShaw@lpc.com

**Douglas Maclay**

214.461.2371  
dmaclay@lpc.com

**Elizabeth Madden**

214.461.2366  
emadden@lpc.com

**Banks Newton**

214.461.2388  
bnewton@lpc.com

**Lincoln**

# SOUTHWEST MEDICAL PLAZA I

Nearby Amenities

7100 Oakmont Blvd. | Fort Worth, TX 76132



**Peter Shaw**

214.461.2302  
PShaw@lpc.com

**Douglas Maclay**

214.461.2371  
dmaclay@lpc.com

**Elizabeth Madden**

214.461.2366  
emadden@lpc.com

**Banks Newton**

214.461.2388  
bnewton@lpc.com

**Lincoln**



# SOUTHWEST MEDICAL PLAZA I

7100 Oakmont Blvd.  
Fort Worth, TX 76132

Leasing Information:  
214.461.2383

**Peter Shaw**  
214.461.2302  
PShaw@lpc.com

**Douglas Maclay**  
214.461.2371  
dmaclay@lpc.com

**Elizabeth Madden**  
214.461.2366  
emadden@lpc.com

**Banks Newton**  
214.461.2388  
bnewton@lpc.com

Healthpeak® | DOC  
LISTE  
NYSE

# Lincoln

Lincoln Property Company  
8140 Walnut Hill Lane Suite 700  
Dallas, TX 75231

[www.lpc.com](http://www.lpc.com)