

# Retail Space for Lease in South Tampa

## 4239 W Kennedy Blvd, Tampa, FL 33609

High Traffic | Great Visibility | Ingress/Egress | Parking | Pylon & Building Signage

**Unit Sizes: 695 SF & 1,408 SF | Total Combined 2,103 SF**

Retail Suites Available for Lease. Unit sizes range from 695 SF to 2,100 SF. Ideal uses include general shop retail, apparel retail, boutique shop retail, professional offices services (insurance, real estate, etc.), massage services, beauty services and other retail related services. The suites available include a 695 SF unit for a rent of \$3,200 per month and a 1,400 SF unit for \$6,400 per month (includes water, sewer and trash). Tenants are responsible for their electricity and internet. Each unit is allowed signage on the shared pylon sign and is allowed building signage on the façade above their respective space. Audibel Hearing Center just join the property and is located directly next to the available units.

**Ideal Uses: General Shop Retail, Apparel Retail, Boutique Shop Retail, Professional Services (Insurance, Real Estate etc.), Massage Services, Beauty Services or other Retail Related Uses**



Drone Video



CLICK HERE 

Google Maps



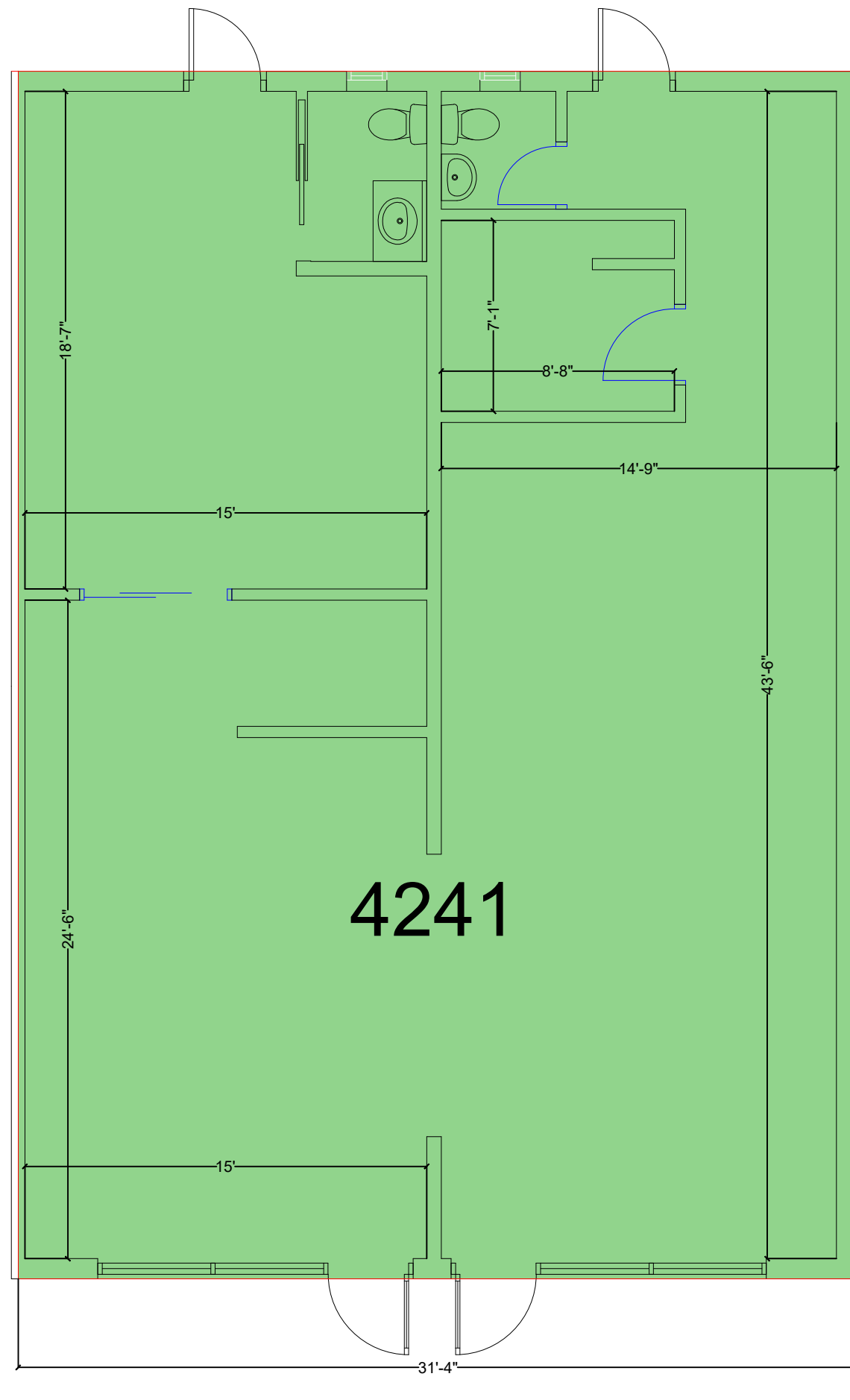
CLICK HERE 



**Jeff Dervech**

**Mobile: 813-766-9639**

**[jdervech@dervechre.com](mailto:jdervech@dervechre.com)**



ANSI/BOMA Z65.5-2025 Retail Standard Gross Leasable Area - 1,408 SF



ATLANTA  
706.623.2384

ORLANDO  
407.971.8688

TAMPA  
727.548.9595

[www.measureDYNAMICS.COM](http://www.measureDYNAMICS.COM)

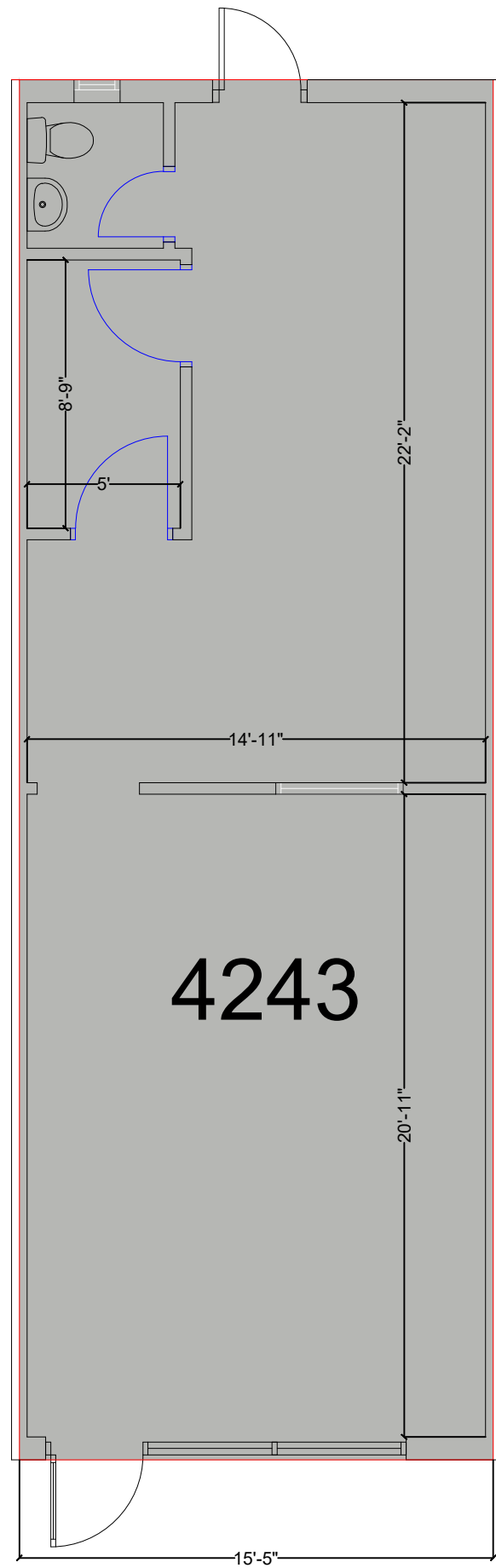
PREPARED FOR:

PROJECT NAME:

4241 West Kennedy Boulevard  
 Tampa, Florida 33609

PROJECT NUMBER:	NKFM-0015
DRAWN BY:	CLS
CHECKED BY:	CLS
DATE:	2/4/2026
SCALE:	3/16"=1'-0"

SHEET TITLE	SUITE 4241 FLOOR PLAN
SHEET NUMBER:	A1.1



ANSI/BOMA Z65.5-2025 Retail Standard Gross Leasable Area - 695 SF



ATLANTA  
706.623.2384

ORLANDO  
407.971.8688

TAMPA  
727.548.9595

[www.measureDYNAMICS.COM](http://www.measureDYNAMICS.COM)

PREPARED FOR:

PROJECT NAME:

4243 West Kennedy Boulevard  
Tampa, Florida 33609

PROJECT NUMBER:

NKFM-0015

DRAWN BY:

CLS

CHECKED BY:

CLS

DATE:

2/4/2026

SCALE:

3/16"=1'-0"

SHEET TITLE

SUITE 4243  
FLOOR PLAN

SHEET NUMBER:

A1.1