



# NINETY FIVE GREENE

BETWEEN PRINCE & SPRING STREETS

Ground Level  
**2,050 SF**

Lower Level  
**1,750 SF**

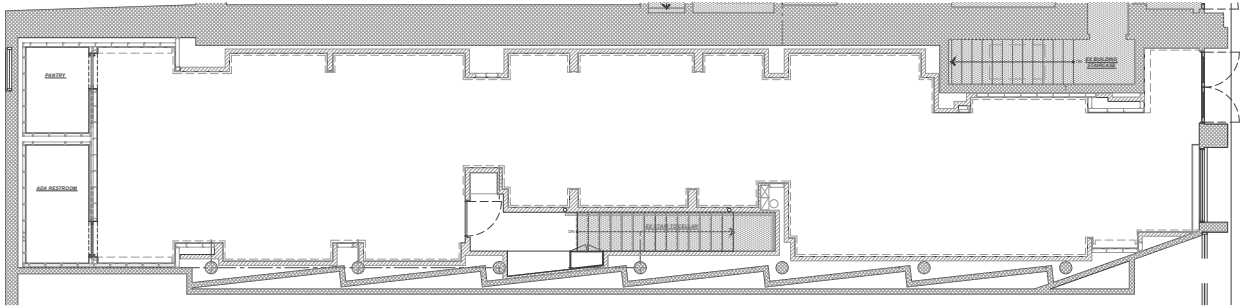
Frontage  
**17'**

Possession  
**April 1, 2027**

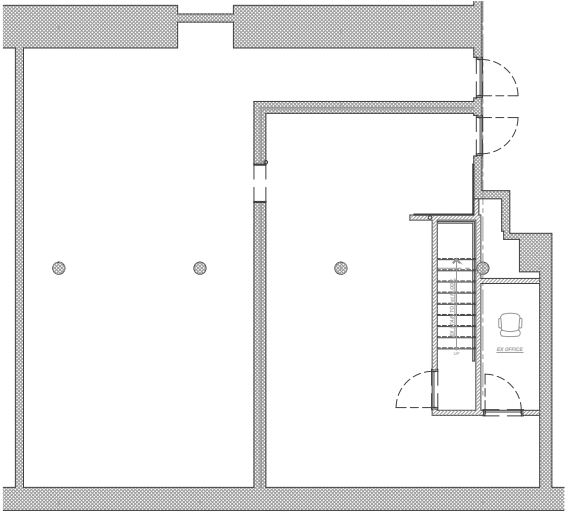
Asking Rent  
**Inquire**



GROUND LEVEL



LOWER LEVEL



## NOTES:

- Rare availability on the best block for luxury retail
- New high-end renovations
- Skylight located at the rear of the space







# NINETY FIVE GREENE

## PLEASE CONTACT:

**Christopher Owles**

212.604.9002

chris@sinvin.com

**Sarah Shannon**

646.673.8780

sarah@sinvin.com

