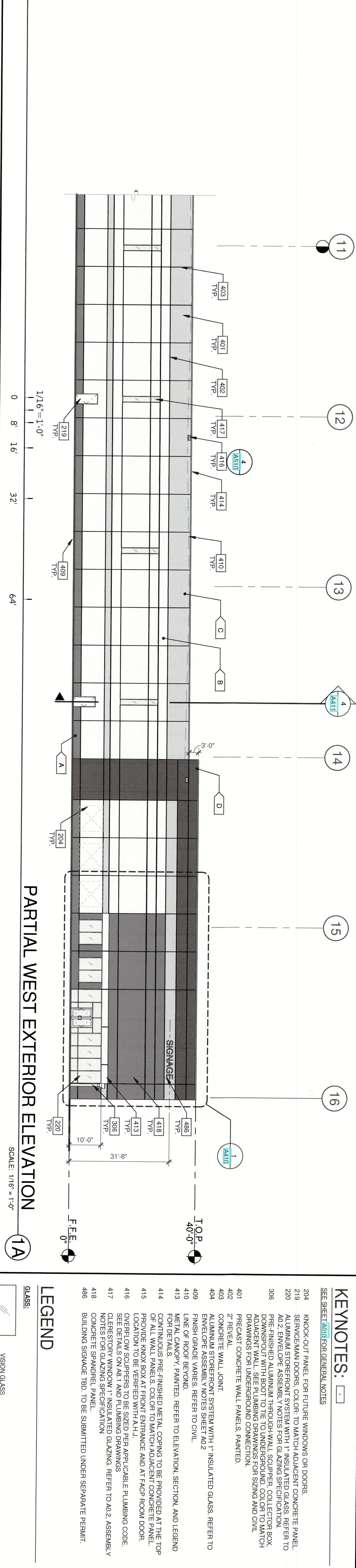
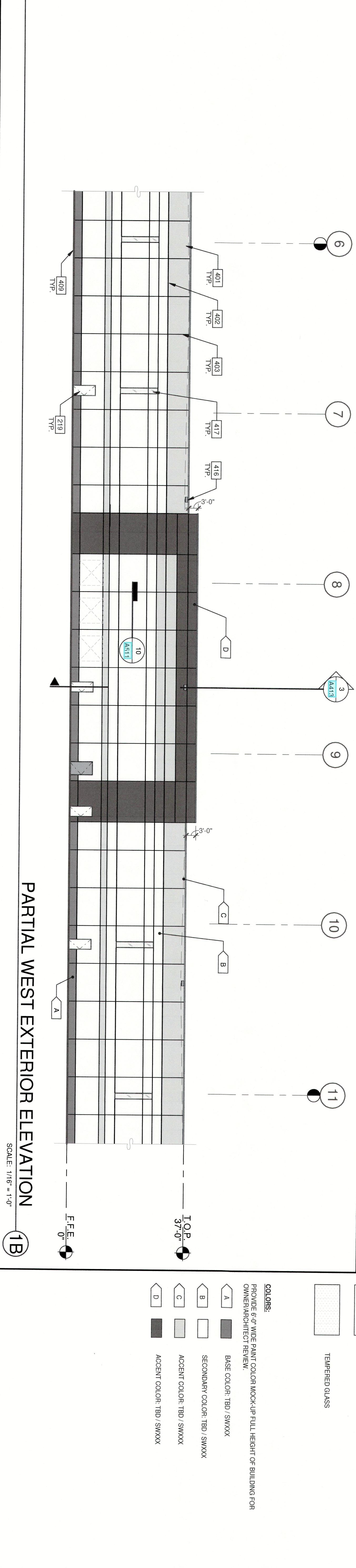


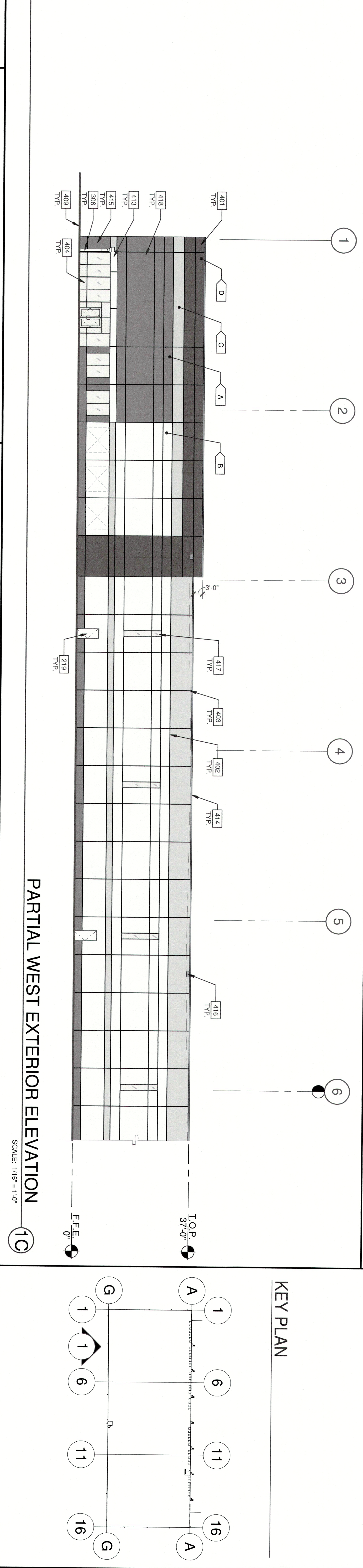
OVERALL WEST EXTERIOR ELEVATION  
SCALE: 1" = 30'-0"



PARTIAL WEST EXTERIOR ELEVATION (1A)  
SCALE: 1/8" = 1'-0"



PARTIAL WEST EXTERIOR ELEVATION (1B)  
SCALE: 1/8" = 1'-0"



PARTIAL WEST EXTERIOR ELEVATION (1C)  
SCALE: 1/8" = 1'-0"

**KEYNOTES:**

- 204 SEE SHEET 1000 FOR GENERAL NOTES
- 204 KNOCK-OUT PANEL FOR FUTURE WINDOWS OR DOORS.
- 219 SERVICE MAN DOORS. COLOR TO MATCH ADJACENT CONCRETE PANEL.
- 230 A02 ENVELOPE ASSEMBLY NOTES FOR GLAZING SPECIFICATION.
- 305 PRE-FINISHED ALUMINUM THROUGH-WALL SOLIPPER COLLECTOR BOX. ADVISORY NOTES FOR GLAZING SPECIFICATION.
- 306 PRE-FINISHED ALUMINUM THROUGH-WALL SOLIPPER COLLECTOR BOX. ADVISORY NOTES FOR GLAZING SPECIFICATION.
- 401 PRECAST CONCRETE WALL PANELS. PAINTED.
- 402 CONCRETE WALL JOINT.
- 403 ALUMINUM STOREFRONT SYSTEM WITH 1" INSULATED GLASS. REFER TO ENVELOPE ASSEMBLY NOTES SHEET A02.
- 409 LINE OF ROOF BEYOND. REFER TO CIVIL.
- 410 METAL CANOPY. PAINTED. REFER TO ELEVATION, SECTION, AND LEGEND FOR DETAILS.
- 414 PRE-FINISHED METAL CORNER TO BE PROVIDED AT THE TOP OF ALL WALL PANELS. COLOR TO MATCH ADJACENT CONCRETE PANEL.
- 415 PROVIDE KNOX BOX AT FRONT ENTRANCE AND AT FACILITY DOOR. LOCATION TO BE VERIFIED WITH A.U.I.
- 416 SEE DETAILS ON A&I AND PLUMBING DRAWINGS FOR A02 ASSEMBLY WINDOW 1" INSULATED GLAZING. REFER TO A02 ASSEMBLY WINDOW 1" INSULATED GLAZING SPECIFICATION.
- 417 CONCRETE SPANDREL.
- 488 BUILDING SIGNAGE TBD. TO BE SUBMITTED UNDER SEPARATE PERMIT.

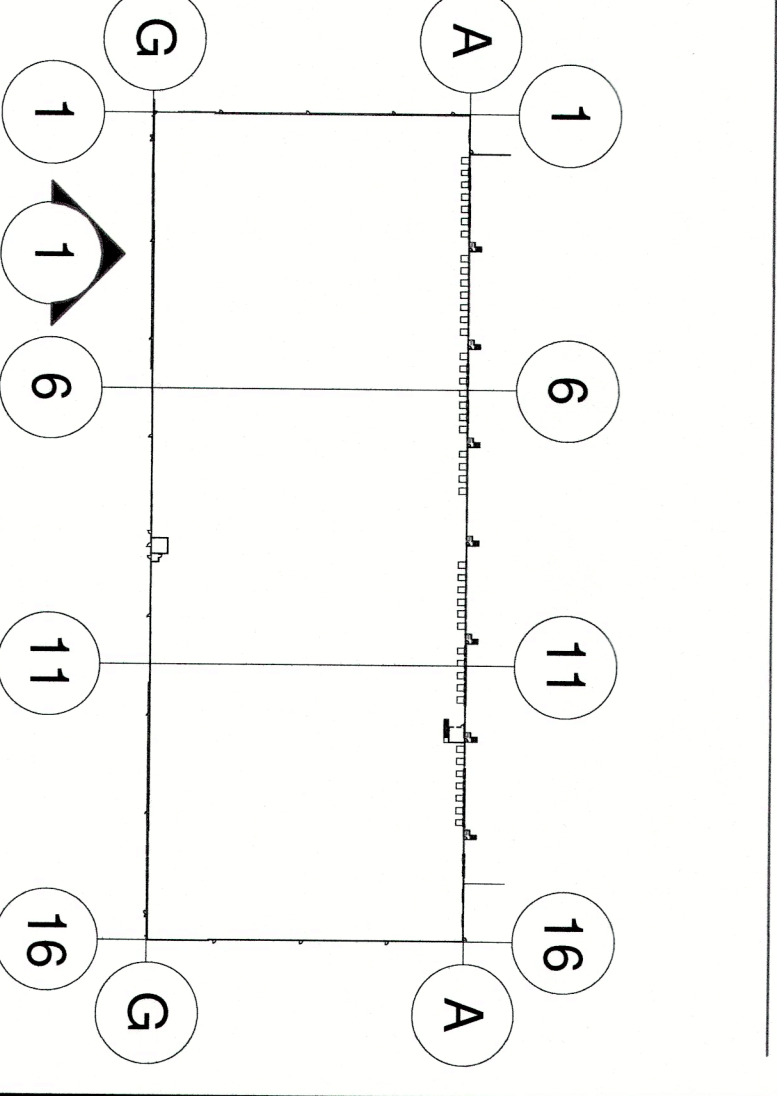
**LEGEND**

- GLASS:
  - VISION GLASS
  - TEMPERED GLASS

**COLORS:**

- PROVIDE 5'-0" WIDE PAINT COLOR KNOCK-UP FULL HEIGHT OF BUILDING FOR OWNER/ARCHITECT REVIEW.
- A BASE COLOR: TBD. SWXXX
- B SECONDARY COLOR: TBD. SWXXX
- C ACCENT COLOR: TBD. SWXXX
- D ACCENT COLOR: TBD. SWXXX

**KEY PLAN**



<b>A210</b>	<b>EXTERIOR ELEVATIONS</b>	<b>IOWA 80 WAREHOUSE DISTRIBUTION</b> WALCOTT, IOWA 52773	<b>RUSSELL</b>		<b>WARE MALCOMB</b> ARCHITECTURE PLANNING INTERIORS CIVIL ENGINEERING BRANDING BUILDING MEASUREMENT 1315 22nd St. #410 Oak Brook, IL 60523 P 630.218.0063
-------------	----------------------------	--	----------------	--	--