

WILDCAT SQUARE

3586 Brinker Avenue, Ogden, UT

1,008 SF - 3,009 SF RETAIL FOR LEASE



Julie Brown / julie.brown@cushwake.com / +1 801 644 4946

April Hartzell / april.hartzell@cushwake.com / +1 801 814 4273



©2024 Cushman & Wakefield. All rights reserved. The information contained in this communication is strictly confidential. This information has been obtained from sources believed to be reliable but has not been verified. NO WARRANTY OR REPRESENTATION, EXPRESS OR IMPLIED, IS MADE AS TO THE CONDITION OF THE PROPERTY (OR PROPERTIES) REFERENCED HEREIN OR AS TO THE ACCURACY OR COMPLETENESS OF THE INFORMATION CONTAINED HEREIN, AND SAME IS SUBMITTED SUBJECT TO ERRORS, OMISSIONS, CHANGE OF PRICE, RENTAL OR OTHER CONDITIONS, WITHDRAWAL WITHOUT NOTICE, AND TO ANY SPECIAL LISTING CONDITIONS IMPOSED BY THE PROPERTY OWNER(S). ANY PROJECTIONS, OPINIONS OR ESTIMATES ARE SUBJECT TO UNCERTAINTY AND DO NOT SIGNIFY CURRENT OR FUTURE PROPERTY PERFORMANCE.

CUSHMANWAKEFIELD.COM

WILDCAT SQUARE

3586 Brinker Avenue, Ogden, UT

OVERVIEW

1,008 SF - 3,009 SF RETAIL FOR LEASE

PREMISES

Located on the backside/lower-level of the Wildcat Square

SIZE

1,008 SF -3,009 SF

LEASE RATE

\$12.00 PSF/NNN

CAM

\$7.56 PSF

NEIGHBORS

Betos, Little Caesars, Sitara India Restaurant, Army Career Center, Metro by T-Mobile, The Laundro Mutt

COMMENTS

- Excellent location on the corner of 36th and Harrison Blvd.
- Located adjacent to Weber State University
- Ample Parking
- Pylon signage available



NEIGHBORHOOD DEMOGRAPHICS



POPULATION



MEDIAN HOUSEHOLD INCOME



DAYTIME EMPLOYMENT

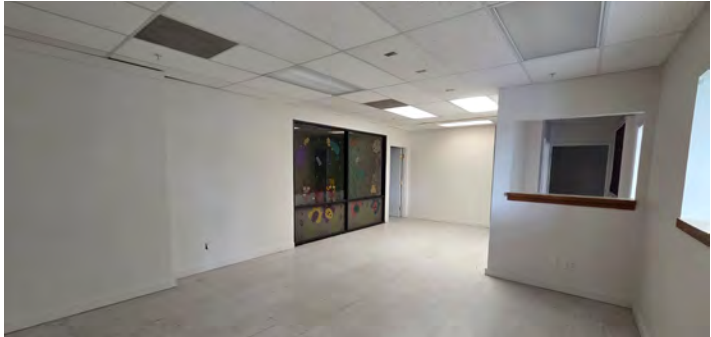
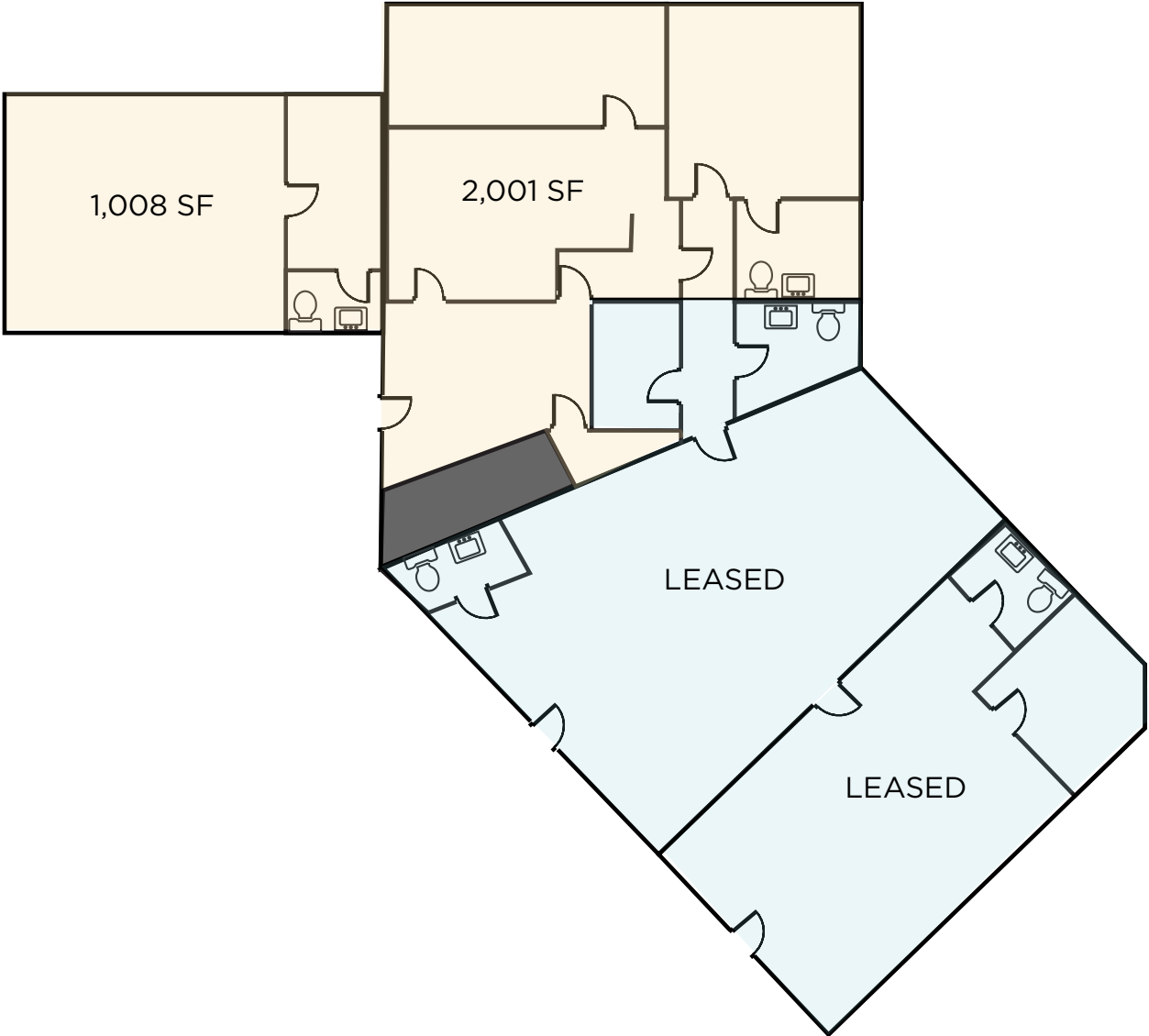
1 Mile	13,956	\$73,063	4,351
3 Miles	79,473	\$74,001	46,759
5 Miles	140,356	\$76,583	82,337

WILDCAT SQUARE

3586 Brinker Avenue, Ogden, UT

SITEPLAN

1,008 SF - 3,009 SF RETAIL FOR LEASE



WILDCAT SQUARE

3586 Brinker Avenue, Ogden, UT

NEIGHBORHOOD MAP

1,008 SF - 3,009 SF RETAIL FOR LEASE



Julie Brown / julie.brown@cushwake.com / +1 801 644 4946
April Hartzell / april.hartzell@cushwake.com / +1 801 814 4273

