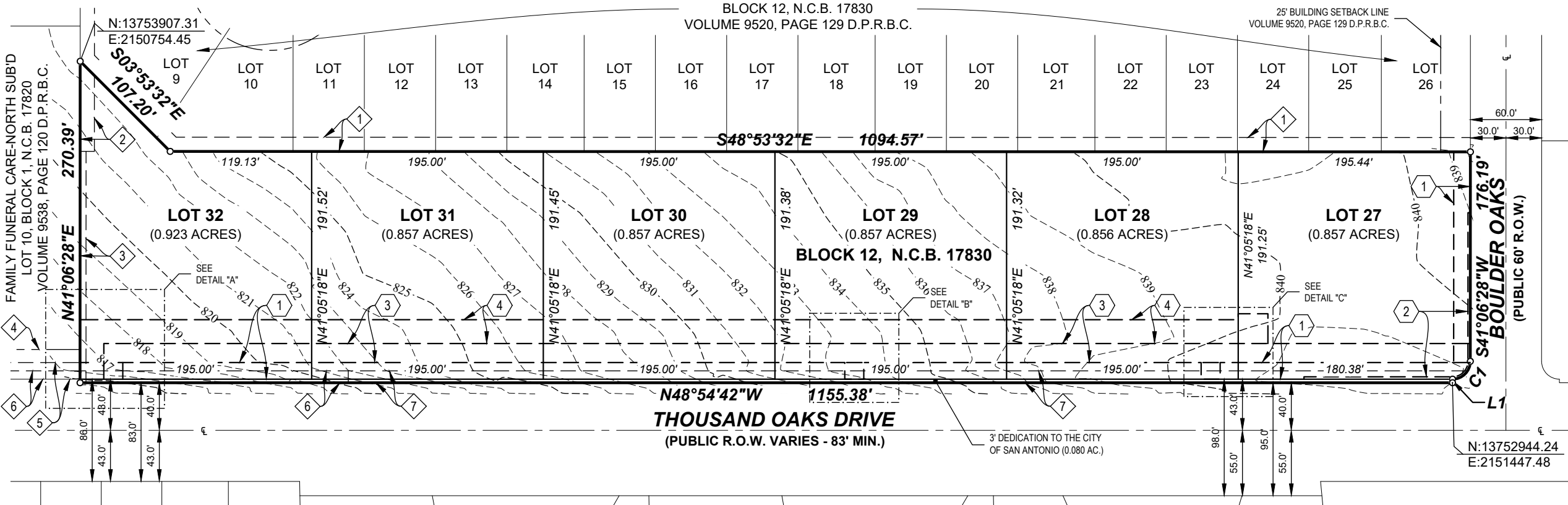


SEVEN OAKS SUBDIVISION, UNIT 9
BLOCK 12, N.C.B. 17830
VOLUME 9520, PAGE 129 D.P.R.B.C.

25' BUILDING SETBACK LINE
VOLUME 9520, PAGE 129 D.P.R.B.C.

FAMILY FUNERAL CARE-NORTH SUB'D
LOT 10, BLOCK 1, N.C.B. 17820
VOLUME 9538, PAGE 120 D.P.R.B.C.



N:13752944.24
E:2151447.48

THOUSAND OAKS DRIVE
(PUBLIC R.O.W. VARIES - 83' MIN.)

3' DEDICATION TO THE CITY
OF SAN ANTONIO (0.080 AC.)

BOULDER OAKS
(PUBLIC 60' R.O.W.)