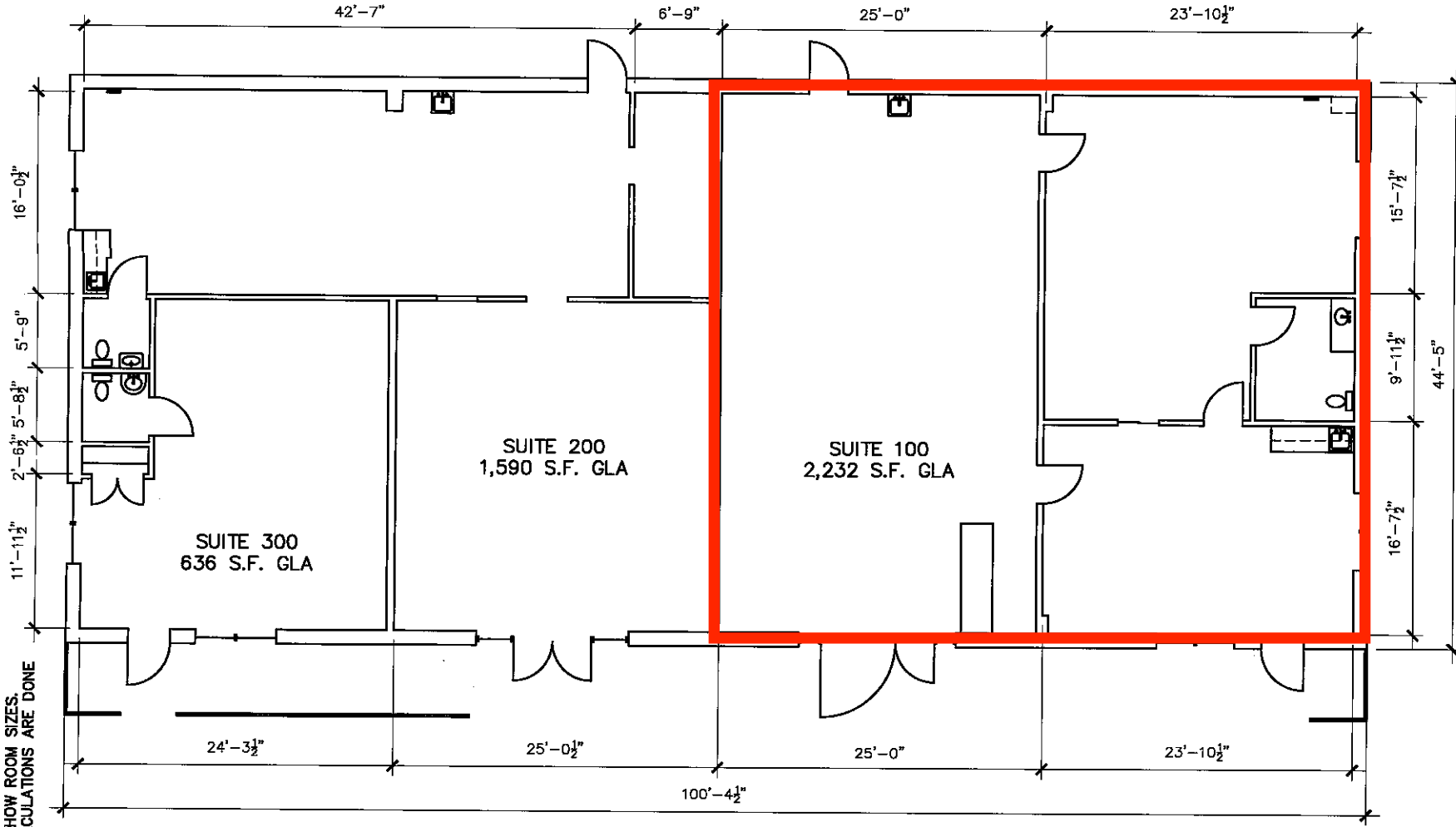


NOTE:

DIMENSIONS ARE TO SHOW ROOM SIZES.
SQUARE FOOTAGE CALCULATIONS ARE DONE
TO BOMA STANDARDS.



NOT TO SCALE

Drawing for:
CSA Realty Group
9011 Mountain Ridge Dr.
Ste. 200
Austin, TX 78759

BUILDING 1
120 FROG POND LN.
DRIPPING SPRINGS, TEXAS
GROSS LEASABLE AREA: 4,458 S.F.

THE MEASUREMENTS, FLOOR PLANS,
AND CALCULATIONS ARE ACCURATE
USING BOMA MEASUREMENT
STANDARDS FOR RETAIL BUILDINGS.
ANSI/BOMA Z85.5 - 2020
Project No.: 2488.03
Date: September 17, 2024
©2024



AUSTIN ★ TEXAS
DIMENSIONS FLOOR PLANS.COM
PHONE: (512) 342-0114